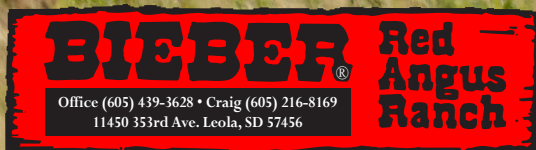


# Bieber Fever

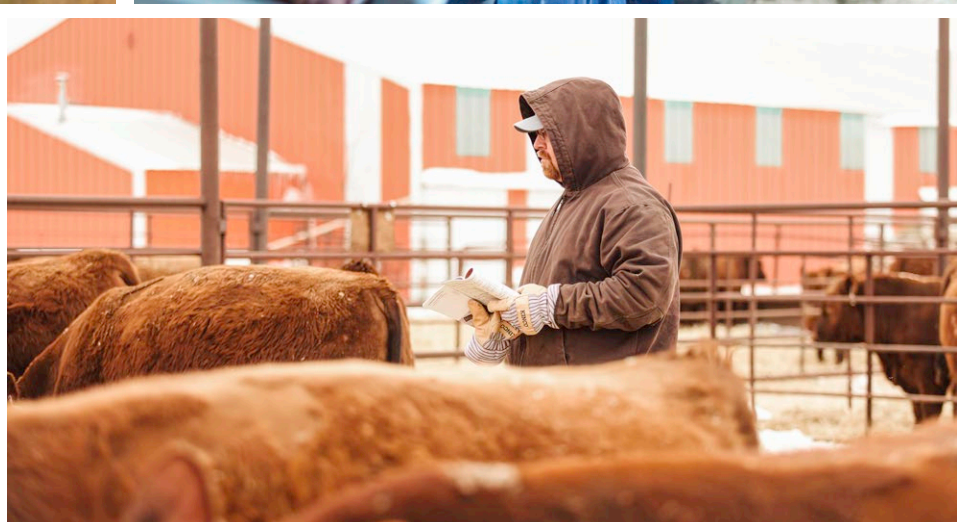
**FALL FEMALE AND BULL SALE**

**THURSDAY, NOVEMBER 9, 2023**

**1 PM AT THE RANCH NEAR LEOLA, SD**









# SALE INFORMATION

## BIEBER RED ANGUS CONTACTS

Bieber Red Angus Office.....	(605) 439-3628
Craig Bieber.....	(605) 216-8169
Peggy Bieber.....	(605) 380-8169
Jake Harms.....	(605) 929-6686
Craig Howard.....	(605) 377-3128
Kristin Harms.....	(605) 380-4408

## AUCTIONEER

Seth Weishaar.....	(605) 210-1124
--------------------	----------------

## OUTSIDE SALES AGENTS

Clint Berry.....	(417) 844-1009
Tom Hardesty.....	(520) 909-0233

## PUBLICATION REPRESENTATIVES

Scott Dirk, Tri-State Livestock News.....	(605) 380-6024
Kirby Goettsch, Farm & Ranch Guide.....	(605) 380-3939
Donnie Leddy, Cattle Business Weekly.....	(605) 695-0113
Jeff Kapperman, Tri-State Neighbor.....	(605) 940-5104

## RED ANGUS BREED ASSOCIATION

Tom Brink, CEO.....	(940) 387-3502
Rachael Oliver.....	(406) 480-1569
Cory Peters.....	(402) 418-2351

*\*Rachael Oliver and Cory Peters will be present on sale day.*

## TOP DOLLAR ANGUS

Nathan Smith.....	(620) 546-4839
-------------------	----------------

## NEOGEN

Kenny Stauffer.....	(402) 560-6345
Nick Hammett.....	(402) 432-1798

## SALE ORDER

Sale order will be commercial heifers first, then proceed in catalog order.  
Any variations from this order will be announced prior to the sale.

## EPD INFORMATION

In this catalog we have included data on the core performance traits. With the ever-expanding database predictions on more traits than ever before, we have had to narrow our EPD selection to these core items. If you would like additional information on any traits not listed, please let us know. The EPDs provided are current as of the date listed under *EPD DATA GENERATED*. Real time data can be found on [www.RedAngus.org](http://www.RedAngus.org).

## SUPPLEMENT SHEETS

Supplement sheets will be available on sale day and will include actual scrotal measurements and actual weights.

## SCHEDULE OF EVENTS

### WEDNESDAY, NOVEMBER 8

8:00 am	Sale cattle available for viewing all day
9:00 am	Coffee and supplement sheets available in sale barn

### THURSDAY, NOVEMBER 9

8:00 am	Sale cattle available for viewing
9:00 am	Coffee and supplement sheets available in sale barn
11:00 am	Lunch will be served in sale barn
<b>1:00 pm</b>	<b>Sale time</b>
5:00 pm	Dinner served following the sale

## SALE LOCATION

### Bieber Red Angus Ranch, 11450 353rd Ave, Leola, SD 57456

The ranch is located nine miles west of Leola on Highway 10. When you see the Bieber Red Angus Ranch sign, turn north and go 1/2 mile.

## DELIVERY POLICY

Please review our delivery policy on Page 4 for info on delivery costs and central delivery points.

PLEASE NOTE: The pricing policy on Page 4 DOES NOT apply to commercial lots. Delivery of all commercial lots will be charged to the buyer at FULL COST.

## INSURANCE

Mortality and Accident, Sickness and Disease Infertility Insurance will be available by Katie Williams of Martin-Trudeau Insurance. Contact Katie at (605) 770-9986 with questions.

## ONLINE BIDDING

The sale will be broadcast live over the internet through DVAuction. To bid from your computer during the sale, complete this simple two step process:

- Visit [www.dvauction.com](http://www.dvauction.com) or call (402) 474-5557. Register by entering a User Name and Password. Enter your personal information on the next screen.
- Click "Apply for Bidding." Select the Bieber Red Angus Sale from the list of sales and click "Apply." Complete the process by filling out the Banking and Lending information requested.

DVAuction will contact you to let you know that you have been approved to bid and buy at the sale. We will assign you a buyer number after you have made a purchase on the sale through DVAuction. After the sale, Bieber Red Angus will contact you to make arrangements for payment and delivery of your purchases.

**Please Note:** You must have high speed internet access (DSL, T-1, or Broadband) to bid during the sale. Any questions, please contact DVAuction at (402) 474-5557 or [support@dvauction.com](mailto:support@dvauction.com). We recommend that you register at least one day before the sale for online bidding.

**DVAuction**  
Broadcasting Real-Time Auctions

# CATALOG LETTER

## Welcome

TO OUR 2023 FALL FEMALE AND BULL SALE!

We want to thank each of you for taking the time to learn about our operation and take a deeper look at the cattle we have to offer at this sale. We work hard to provide our customers with cutting edge genetics that excel in all segments of the beef industry. To us that means breeding for growth, fertility, calving ease, maternal, and carcass traits. These traits should come in a functional package, with good feet, udders, and disposition, without giving up style and eye appeal. We truly believe through focused selection, you can have it all.

Our program has been influential in the Red Angus breed, and the cattle industry as a whole, for over 50 years. Through those years, we have seen many different seedstock breeders come and go - some much quicker than others. We use our experience and knowledge of development to produce seedstock cattle that will offer longevity and productivity. That means you get a product that is far above the average of the industry.

Our crew is passionate about making cattle better. To do that, we have learned a lot about the basics of the cattle business. We find ourselves constantly monitoring the information in the industry to make sure we have knowledge that will benefit you when you need advice. When new technology becomes available, we analyze it to make robust decisions on how to use it to be more profitable.

Our program has a focus on profit that is second to none. The proof is in the pudding: four of the top ten most used Red Angus bulls were produced by our program, and two additional Bieber herdsires fall right outside the top ten. We focus on profit and quality in every part of our program and daily work to give you the consistency you want in your cowherd. We have always felt good seedstock in volume pushes prices to a level every cattle producer can afford. After reading this, I personally hope you take the time to do one of the following things:

- Come to our ranch and look at this offering.
- Get on our website and take a look at our lot videos.
- Call me, Jake Harms, or Craig Howard for a personalized bull or female list that fits your operation.

We know our future and success depends on customer satisfaction. Repeat customers, long-standing relationships and real genetic value are what we aim to produce. We continue to promise that if you have a problem, we will do our best to make sure you are satisfied.

On sale day, we look forward to seeing our customers that have become friends and meeting new customers that we hope to have a long-standing relationship with. We are excited to see you at the Bieber Fever Fall Female and Bull Sale.

CRAIG J BIEBER



Our Family

Back L to R: Eric and Megan Payne, Craig and Peggy Bieber, Holton Harms, Kristin and Jake Harms

Front L to R: Londyn Harms, Kylie Payne, Hartley Harms, Presley Payne





# MEET THE TEAM



## CRAIG AND PEGGY BIEBER

Craig and Peggy are the owners and operators of Bieber Red Angus. As CEO, Craig oversees the operation of the ranch and coordinates the selling of more than 550 Red Angus bulls each year. Peggy is his partner and the full-time office manager at the ranch. She manages all bookkeeping, cattle record entry, and sale clerking. Together, they work diligently to market exceptional cattle to seedstock and commercial cattlemen alike.

## JAKE AND KRISTIN HARMS

Jake and Kristin are Craig and Peggy's son-in-law and daughter and the next generation on the operation. Jake oversees the feeding plan for the Bieber herd and handles cattle sales with Craig, along with his herdsman duties. Kristin handles the marketing and works in the office with Peggy. Both are committed to the future of the operation.



## CRAIG HOWARD

Craig is the cow boss at Bieber Red Angus. He manages the daily operations of the ranch including breeding, calving, overall cattle care, and maintenance. Craig knows the Bieber herd as well as anyone, having been with the ranch for more than 17 years, and is committed to the program he has helped build over his tenure.

## JACKSON SIMONDS

Jackson is a herdsman and feeding specialist. He focuses on feeding and maintaining all of our farm and ranch equipment, among his other ranch duties. He has developed into a strong cattleman over the last few years and has stepped up as a great addition to our team.



## LOIS BIEBER

Lois is a co-founder of Bieber Red Angus. She and Ron, who passed away in August 2020, established the Red Angus herd in 1968 with proven cows from leading breeders. Lois resides in Aberdeen but continues to help with the sale and visits often!





# DELIVERY POLICY

We have outlined our delivery arrangements and pricing below and we encourage each of you to review the details. Please stop by our check out counter prior to leaving the sale to coordinate delivery plans on your animals. If you are not onsite on sale day, Craig will be in touch with you within a week of the sale to coordinate the delivery of your purchases. We appreciate your patience and assistance when organizing delivery.

## DELIVERY PRICING

As always, we will continue to offer free delivery to **CENTRAL POINTS** in South Dakota and North Dakota. For all other states, delivery will be charged to **CENTRAL POINTS** per head based on the pricing outlined on the map below. Pricing will be charged based on your physical address. Delivery charges will be added to each invoice at check out, unless you plan to load out within 7 days of the sale.

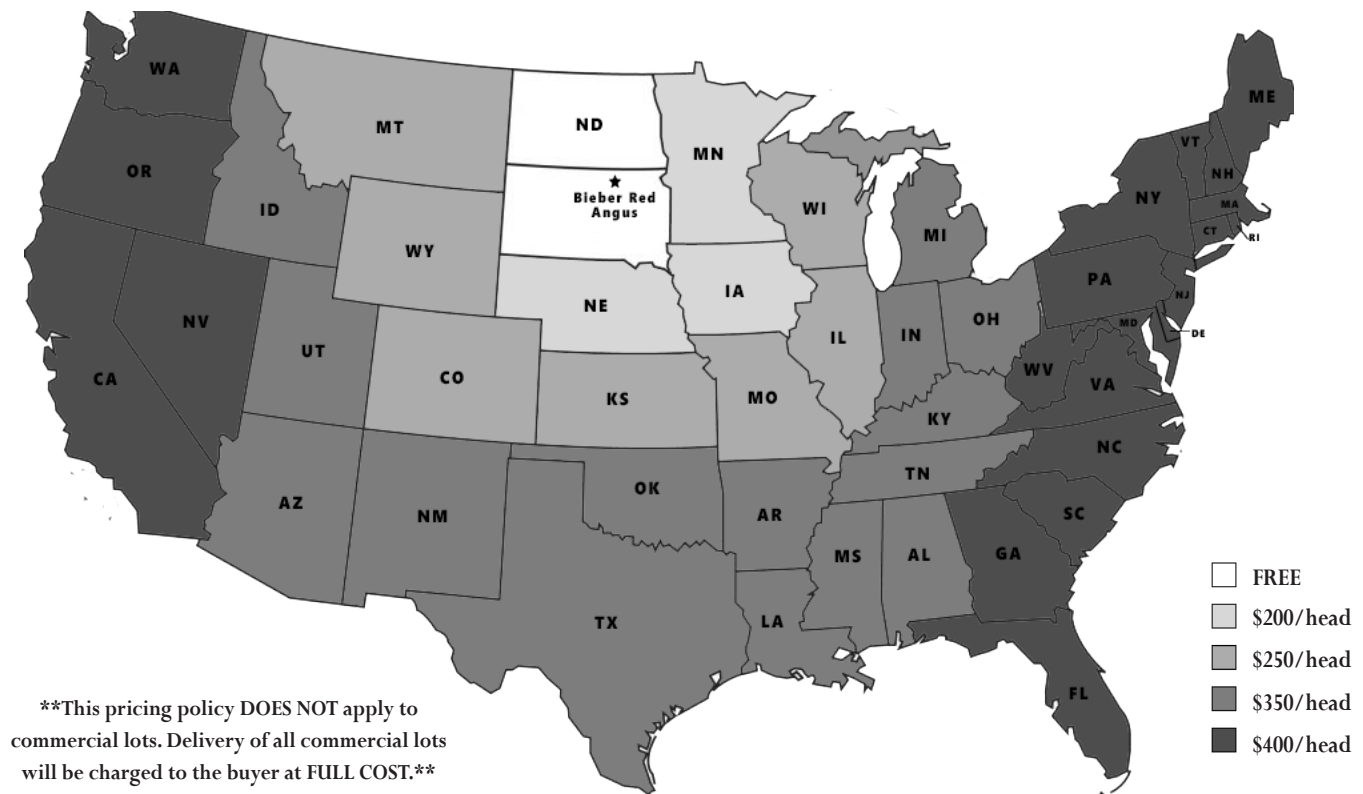
## CENTRAL POINTS

All deliveries will be organized to **CENTRAL POINTS** within the state. Delivery will NOT be organized to your home or ranch. Loads are delivered by semi truck and require drop off points along their route with a loading chute and location to house livestock. You are expected to meet the semi truck driver at the central drop-off point as communicated by them. Central points for delivery include auction barns, vet clinics, and other locations determined by the semi truck driver at the time of delivery. Pricing to these central points will be charged to you based on your physical address. The driver will be given your contact information and will communicate with you regarding the drop off time and location.

## FEEDING ARRANGEMENTS

If you are not ready to receive your animals when we plan to deliver to your area, feeding arrangements are available for a charge of \$3.50 per day per animal. Please coordinate these feeding arrangements after the sale.

We ask for your cooperation in arranging dates and the pick up of your cattle at central delivery points within your state. This will keep the cattle from being on the semi truck longer than necessary and help to get your animals to you with the least possible stress and in the best possible condition. We appreciate your understanding of our delivery policy and look forward to working with you on the delivery of your cattle. Please let us know if you have any questions!





# SALE TERMS

## HEALTH

Ashley Vet Clinic will be available on sale day. All cattle are on a complete vaccination program supervised by Ashley Vet Clinic.

In the past bulls have been tested for persistent BVD carriers and all tests were negative for a number of years. We have chosen not to test the bulls this year since no positives have been found in over 10 years. We have tested our replacement heifers for BVD since 2014 as part of our surveillance program and found no positive BVD carriers. Bieber Red Angus participates in the Beef Quality Assurance (BQA) program. Heifer calves have been Bangs vaccinated. We participated in a Johnes testing program for 10 years with no confirmed positives. We no longer test for Johnes disease but continue to diligently watch for any suspicious cases and test as necessary.

## BREEDING SOUNDNESS EXAM

Breeding soundness screenings will be performed in November before the sale. We fully guarantee that these bulls will pass the breeding soundness evaluation before the breeding season in 2024 if the bulls are managed properly. Part of being maintained properly means being on a plan of nutrition where bulls maintain or gain weight. The bulls will be weighed the week prior to the sale when the breeding soundness evaluation is done. We recommend that all bulls be tested 4 to 6 weeks prior to your breeding season. Our guarantee will require that the bull weigh the same or more than when we did the breeding soundness evaluation in November 2023. We ask for your understanding if a bull does not pass. Sometimes bulls that have passed do not pass later for various reasons. We will do our best to make sure you are satisfied. Keep in mind that the development of any bull is inhibited by inadequate nutrition. If you have any questions regarding breeding soundness evaluation, feel free to call Craig or Dr. Dean Christensen at the Ashley Vet Clinic.

## RETAINED INTEREST

We are retaining 1/2 interest in all bulls in the sale. We are selling the remaining 1/2 interest, full possession, and full salvage value. This option gives Bieber Red Angus Ranch the option to collect, use and market semen from the bull and does not restrict the purchaser from doing the same. This collection, unless agreed otherwise, would be done at the expense of Bieber Red Angus Ranch, at the buyer's convenience. Also at the time of purchase, the highest bidder on a retained interest bull may elect to purchase exclusive semen rights for 100% of the purchase price in addition to the purchased price on retained bulls. If a buyer elects to purchase exclusive semen rights, Bieber Red Angus Ranch's interest then becomes in herd use only, but Bieber Red Angus Ranch retains all rights to use the bull within their herd.

## BIRTH WEIGHTS/CALVING EASE

We score for calving ease with our three star (\*) scoring system. Three stars (\*\*\*) indicates that a particular bull can be used on heifers under standard conditions with little or no calving difficulty. Two stars (\*\*) indicates that a particular bull should be used on growthy heifers or cows under standard conditions with little or no difficulty. One star (\*) indicates that a particular bull should be used on cows under standard conditions with little or no difficulty. This recommendation is a system we use to help our customers with calving ease selections.

Birth weights are highly affected by environmental factors. Research has indicated that the inclusion of corn in cow diets will increase BW. Also contributing to higher BW were cold temperatures. The University of Nebraska conducted a three-year study to research and evaluate effects of high and low temperatures during winter months on calves out of 384 two-year-old heifers. Average BW increased by 11 lbs. when temperatures were colder. The results agree with other studies comparing calves born in the southern US to calves born in the northern US. Weather plays an important role in BW and calving difficulty. We have adjusted the calving ease scores accordingly, taking into consideration what the calf ratioed on BW, pedigree, CE EPD, BW EPD and Genomic data.





# SALE TERMS

---

## COLOR

All animals are red unless otherwise indicated in the footnotes.

## WEIGHTS

Birth weights, weaning weights, yearling weights, and all other measurements are taken at appropriate times to produce sound and accurate comparisons within contemporary groups. We group our Red Angus calves based on the age of our cows. Calves out of two-year-old dams, three-year-old dams, and the main cowherd are all separate management groups and therefore are separate contemporary groups. Embryo transplant calves are contemporaried in the groups they are weaned with.

## WEANING WEIGHTS

These naturally born calves at Bieber Red Angus Ranch were raised without creep. We feel that this helps us select and breed for dams that have milking ability and sound udders. ET calves are on creep feed to express their full genetic potential.

## INTERNET AND ABSENTEE BIDDING

We would prefer for you to be in attendance on sale day. Realistically, we know that there will be scheduling conflicts and distance limitations. In these instances, we can arrange an individual to handle your bid over the phone so you can participate in the sale. Please call the office prior to the sale and register as a prospective buyer. We need to warn you of complications we have experienced with phone bidding including the volume of the phone and the rapid pace at which our sale moves. For internet bidding information, see the DVAuction section.

If you are unable to attend and you feel comfortable doing so, you also have the option to leave your bids with the Bieber crew, Auctioneer, or publication representatives. We handle many sight unseen bids and have very satisfied customers who feel confident in using this service. We prefer to have plenty of time to discuss your needs over the phone prior to sale day so that we may select the cattle that best fit your specifications. We buy those animals just like you were sitting ringside with us. We also guarantee the cattle and if they don't meet your expectations, you can return them. If possible, please evaluate the offering onsite prior to sale day. We will also post video of each lot on our website.

## BREEDING DATA

Breeding data on the bred females, including sex of pregnancy and date of calving, is verified by ultrasound and is an estimate. Many years of ultrasound data has proven it is 99% accurate. This data is verified to the best of the veterinarian's ability depending on embryo age. Some bred females have two sires too close to call by ultrasound and we have indicated that DNA will be necessary to determine the sire in the footnotes

## FEEDING

Feeding arrangements are available on all lots and will be fed at a charge of \$3.50 per day. We will feed your purchases from sale day until you are ready to pick them up, or we will deliver them.

## GENETIC DEFECTS

Every animal in the Bieber Red Angus production sale is guaranteed negative for the recessive gene associated with Osteopetrosis(OS), Arthrogryposis Multiplex(AM) (Curly Calf Syndrome), Neuropathic Hydrocephalus (NH) and any other known genetic defects. With this guarantee, we provide our customers the opportunity to purchase their choice of cattle with very little risk. DNA samples have been collected on every animal in the sale with any known carrier in the first three generations and tested negative unless otherwise noted.

## GAINTESTING

The summer born bulls were weaned in October of 2022 and yearling weights were taken in May of 2023. All summer born bulls were placed on feed in preparation for the sale.





# BIEBER IGENITY

We want to take this opportunity to introduce you to Bieber Igenity, a DNA evaluation from Neogen that will rank your herd on the same basis as data provided by Igenity on Bieber Red Angus bulls. This evaluation will allow you to have your animals tested and ranked against a large data base, and then in turn directly select bulls that can complement your herd. This approach offers a science-based method to directly compare and contrast DNA markers within the bovine population.

We aim to produce bulls that provide the greatest return per dollar invested by staying focused on profit-oriented genetics that reduce management and labor inputs and increase sustainability. This program contributes to that goal by making our bulls and your cowherd speak the same DNA language. Our bulls have been tested on this same platform, giving you the opportunity to make better choices on what bulls will drive your operation in the right direction. We are excited to partner with Neogen on Bieber Igenity, the industry's first commercial cattle, multi-breed genomic selection process that is globally accepted.

Sample collectors and tests can be purchased from Bieber Red Angus at the following prices.

- Blood card: \$1.00
- Tissue Sample Unit (TSU): \$2.50
- TSU EID Kit (840 tag): \$5.00
- DNA tests: \$29.00 per test

For an additional \$4.00, BVD PI testing can be done on TSU samples only. Sire parentage can be determined if Neogen has the sire on file. There is a 4 to 5 week turnaround for testing results. With this program, you will receive a \$10.00 credit per test towards a bull purchase at Bieber Red Angus.

## HOW TO IMPLEMENT BIEBER IGENITY

Step 1: Choose 30-50 females in your herd to test in the program. This number allows you to identify the genetic trends in your herd.

Step 2: Order blood cards or a TSU. This can be done directly through Bieber Red Angus or Neogen. Tests will cost \$29.00 per test when ordered through Bieber Red Angus, with a \$10.00 credit per test towards a bull purchase at Bieber Red Angus. Credit must be used within two years of submitting your Bieber Igenity order. Credit is valid for bulls ONLY and can equal only 20% of your total bull purchase.

For example

Spend: \$5,000      Use: \$1,000 Credit

Spend \$10,000      Use: \$2,000 Credit

Step 3: Collect DNA samples

Step 4: Fill out order form from Bieber Red Angus.

Step 5: Send completed order form, check made out to Bieber Red Angus, and your samples to:

Bieber Red Angus  
ATTN: Sample Submission  
11450 353rd Ave  
Leola, SD 57456

After these steps are completed, we will send your samples to Neogen for testing with a turnaround time of 4 to 5 weeks.





## BRED HEIFERS

We started offering bred heifers several years ago and people always wonder how we select which ones to sell. The first reason we offer them is for regular cash flow and breeding heifers is something we are good at. We also have pastures that are better for yearlings over pairs. We generally offer any bull bred heifers to help us shorten our calving window and we also offer some AI bred heifers for those who calve earlier.







## LOT 1 BIEBER CL ADELLE 472K

*Calf due 3/9/2024 sired by BROWN PRIORITY J428 or PIE ACCENT 1612. DNA testing will be necessary to determine sire.*

The Adelle cowline is recognized throughout the breed. This female goes back to one of the original dams we still have in our ET program, Bieber Adelle 297Y. She is the granddam of both Stockmarket and Energize. That means she stacks Adelle on both sides of her pedigree. This lot posts very impressive data being in the top 1% of the breed for GridMaster.

BORN: 3/14/2022

REG: 4660333

100% AR 1A

PIE STOCKMAN 4051

**BIEBER CL STOCKMARKET E119**

BIEBER CL ADELLE 475C

BIEBER CL ATOMIC C218

**BIEBER CL ADELLE 556H**

Cow ID: 472K

BIEBER CL ADELLE 105D

EPD Data Generated 9/28/2023

	CED	BW	WW	YW	MILK	ME	HPG	CEM	STAY	MARB	REA	FAT
EPD	16	-4.5	74	125	25	14	10	10	12	0.95	0.19	0.05
Rank	12%	10%	9%	6%	55%	96%	80%	5%	86%	1%	36%	95%
HERDBUILDER RANK	30											
		90%										
GRIDMASTER RANK	82											
					1%							
PROS RANK	112											
							21%					







2

LOT 2 BIEBER MISS DANA 160K

*Calf due 3/10/2024 sired by BROWN PRIORITY J428 or PIE ACCENT 1612. DNA testing will be necessary to determine sire.* This lot smashes growth out of the park and offers GridMaster in the top 1% of the breed. Her young dam has a lot of potential and with an IMF ratio of 152, she is likely to produce progeny that work toward more profit across all segments of the beef industry.

BORN: 2/5/2022      REG: 4620629      100% AR 1A

BIEBER CL STOCKMARKET E119  
BIEBER DIVIDEND H517  
BIEBER DATELINE 525F  
STRA FORERUNNER 838  
BIEBER MISS DANA 390H  
Cow ID: 160K      BIEBER MISS DANA 214E      EPD Data Generated 10/5/2022

	CED	BW	WW	YW	MILK	ME	HPG	CEM	STAY	MARB	REA	FAT
EPD	5	2.7	91	148	28	24	11	3	11	0.85	0.51	0.01
Rank	99%	99%	1%	1%	29%	99%	54%	98%	92%	2%	3%	44%
HERDBUILDER	-6		GRIDMASTER	80		PROS	74					
RANK		99%	RANK	2%		RANK	79%					





# BRED HEIFERS

3

**BIEBER PRIMROSE 223K**

BORN: 2/18/2022 REG: 4620877 100% AR 1A

BIEBER CL STOCKMARKET E119

**BIEBER FULLY STOCKED H179**

BIEBER FLOWER 165E

9 MILE FRANCHISE 6305

**BIEBER PRIMROSE 278G**

Cow ID: 223K BIEBER PRIMROSE 244C EPD Data Generated 9/28/2023

	CED	BW	WW	YW	MILK	ME	HPG	CEM	STAY	MARB	REA	FAT
EPD	15	-3.1	61	107	30	13	10	10	16	0.72	0.45	0.06
Rank	21%	26%	47%	28%	16%	94%	76%	4%	45%	6%	5%	99%
HERDBUILDER RANK	53											
		54%										
GRIDMASTER RANK	61											
PROS RANK	114											



Calf due 3/9/2024 sired by BROWN RIORITY J428 or PIE ACCENT 1612. DNA testing will be necessary to determine sire. Here's another Primrose but with the maternal phenom Franchise 6305 as the sire. Lot 3 stacks some great data being in the top 1% for ProS, top 17% for HerdBuilder, and top 3% for GridMaster. Not to mention she also has marbling and REA at the top of the breed. You don't have to give anything up with this lot.

4

**BIEBER PRIMROSE 257K**

BORN: 2/22/2022 REG: 4621281 100% AR 1A

BIEBER CL STOCKMARKET E119

**BIEBER DIVIDEND H517**

BIEBER DATELINE 525F

BIEBER SPARTACUS A193

**BIEBER PRIMROSE 204E**

Cow ID: 257K BIEBER PRIMROSE 509B EPD Data Generated 9/28/2023

	CED	BW	WW	YW	MILK	ME	HPG	CEM	STAY	MARB	REA	FAT
EPD	15	-2.7	84	133	29	14	10	9	14	0.83	0.36	0.06
Rank	22%	33%	1%	2%	22%	96%	76%	14%	64%	3%	11%	99%
HERDBUILDER RANK	47											
		67%										
GRIDMASTER RANK	61											
PROS RANK	107											



Calf due 2/29/2024 sired by BROWN PRIORITY J428 or PIE ACCENT 1612. DNA testing will be necessary to determine sire. This heifer comes from the Primrose cowline which is known for its consistency and its ability to produce cattle that work. They are moderate birth weight, offer excellent growth, and produce great carcass and maternal traits. Stack in Dividend and this heifer has the potential to be a future donor. Her dam was a donor in our ET program and produced progeny with great potential.

5

**BIEBER QUEEN 163K**

BORN: 2/6/2022 REG: 4620639 100% AR 1A

BIEBER CL STOCKMARKET E119

**BIEBER DIVIDEND H517**

BIEBER DATELINE 525F

BIEBER DRIVEN C540

**BIEBER QUEEN 249H**

Cow ID: 163K BIEBER QUEEN 169C EPD Data Generated 9/28/2023

	CED	BW	WW	YW	MILK	ME	HPG	CEM	STAY	MARB	REA	FAT
EPD	12	-1.8	84	134	28	18	12	8	12	0.99	0.35	0.04
Rank	66%	50%	1%	2%	29%	99%	38%	39%	86%	1%	12%	86%
HERDBUILDER RANK	27											
		93%										
GRIDMASTER RANK	81											
PROS RANK	108											



Calf due 2/28/2024 sired by BROWN PRIORITY J428 or PIE ACCENT 1612. DNA testing will be necessary to determine sire. This lot will be one to watch with Dividend stacked on Driven. Not only does she rank in the top 1% for marbling, she backs it up with a 111 IMF ratio. Her maternal sire is one we can't help but think about going back to as the daughters are great females.







LOT 6 BIEBER DURHEIM 397K

Calf due 2/28/2024 sired by BROWN PRIORITY J428, LSF MEW FULCRUM 2600K, or PIE ACCENT 1612. DNA testing will be necessary to determine sire. Lot 6 is the first Durham female to sell in this offering. The Durheims are legendary for winning more GridMaster awards than anyone before we bought the herd and registered them. These cattle have tons of carcass and maternal to offer. Flash Drive has produced some outstanding progeny and this female will get you into a great sire line.

BORN: 5/10/2022      REG: 4661993      93.6% AR 5.9% SM 0.6% XX 1B

BIEBER HARD DRIVE E640  
BIEBER FLASHDRIVE G266  
BIEBER FLOWER 312E  
MLK CRK UNIFIED 4207

**BIEBER DURHEIM 185D**  
Cow ID: 397K      BIEBER DURHEIM420B      EPD Data Generated 9/28/2023

	CED	BW	WW	YW	MILK	ME	HPG	CEM	STAY	MARB	REA	EAT
EPD	10	0.4	75	121	33	14	14	7	15	0.62	0.63	-0.01
Rank	85%	87%	8%	8%	5%	95%	13%	48%	52%	13%	1%	5%
HERDBUILDER RANK	55											
		51%										
GRIDMASTER RANK	69											
					5%							
PROS RANK	124											
							10%					







## LOT 7 BIEBER DATELINE 411K

*Calf due 2/27/2024 sired by BROWN PRIORITY J428 or PIE ACCENT 1612. DNA testing will be necessary to determine sire.* High Density is one of our favorite sons to come out of the great Hard Drive sire line. We've used him the past few seasons and his first progeny sold this spring in our Performance Yearling Bull Sale. They are stout, well made, and impressive in the pen. This heifer offers a great data and pedigree package.

BORN: 5/17/2022

REG: 4662075

100% AR 1A

BIEBER HARD DRIVE Y120

**BIEBER HIGH DENSITY H558**

BIEBER ENCHANTRESS 359B

PIE COWBOY UP 5292

**BIEBER DATELINE 243F**

Cow ID: 411K

BIEBER LAURA 509D

EPD Data Generated 9/28/2023

	CED	BW	WW	YW	MILK	ME	HPG	CEM	STAY	MARB	REA	FAT
EPD	4	2.6	85	138	23	31	14	1	15	0.32	0.60	0.03
Rank	99%	98%	1%	1%	74%	99%	15%	99%	63%	72%	2%	67%
HERDBUILDER	5											
RANK		99%										
GRIDMASTER	23											
RANK					78%							
PROS	28											
RANK						99%						





# BRED HEIFERS

8

**BIEBER PRIMROSE 341K**

BORN: 3/14/2022

REG: 4621357

100% AR 1A

HXC 5545C

**KJL/CLZB KIRKLAND 8003F**

HXC 107Y

BIEBER HARD DRIVE Y120

**BIEBER PRIMROSE 534D**

Cow ID: 341K

BASIN PRIMROSE 2043

EPD Data Generated 9/28/2023

	CED	BW	WW	YW	MILK	ME	HPG	CEM	STAY	MARB	REA	FAT
EPD	12	0.3	77	118	24	5	14	5	13	0.26	0.35	-0.01
Rank	66%	86%	5%	12%	61%	58%	12%	87%	75%	86%	12%	5%
	HERDBUILDER	46		GRIDMASTER	29		PROS	75				
	RANK	68%		RANK	69%		RANK	78%				



Calf due 2/28/2024 sired by **BROWN PRIORITY J428** or **PIE ACCENT 1612**. DNA testing will be necessary to determine sire. Kirkland 8003F came to us from the Hueftle program. This lot's dam sells in this sale as well at lot 47. These Primrose females are some of the most sought after in the entire breed.



9

**BIEBER SP DUREHIM 199K**

BORN: 2/14/2022

REG: 4620797

96.5% AR 2.9% SM 0.6% XX 1B

BIEBER CL STOCKMARKET E119

**BIEBER FULLY STOCKED H179**

BIEBER FLOWER 165E

BIEBER LET'S ROLL B563

**BIEBER SP DURHEIM 237G**

Cow ID: 199K

BIEBER DURHEIM 262D

EPD Data Generated 9/28/2023

	CED	BW	WW	YW	MILK	ME	HPG	CEM	STAY	MARB	REA	FAT
EPD	13	-3.3	69	114	29	18	12	8	12	0.48	0.59	0.03
Rank	45%	23%	19%	16%	18%	99%	35%	27%	85%	34%	2%	77%
	HERDBUILDER	26		GRIDMASTER	55		PROS	81				
	RANK	94%		RANK	17%		RANK	69%				



Bull calf due 1/17/2024 sired by **LSF SRR EXACTLY 1144J**.

10

**BIEBER SP CHIC 303K**

BORN: 3/1/2022

REG: 4621143

100% AR 1A

PIE STOCKMAN 4051

**BIEBER CL STOCKMARKET E119**

BIEBER CLADELLE 475C

BIEBER LB MITIGATOR C314

**BIEBER CHIC 431F**

Cow ID: 303K

BIEBER CHIC 159Y

EPD Data Generated 9/28/2023

	CED	BW	WW	YW	MILK	ME	HPG	CEM	STAY	MARB	REA	FAT
EPD	11	-3.3	76	122	31	14	9	8	11	0.60	0.45	0.06
Rank	75%	23%	6%	8%	9%	96%	88%	29%	90%	16%	5%	99%
	HERDBUILDER	20		GRIDMASTER	35		PROS	56				
	RANK	96%		RANK	55%		RANK	95%				



Calf due 3/12/2024 sired by **BROWN PRIORITY J428** or **PIE ACCENT 1612**. DNA testing will be necessary to determine sire.

11

**BIEBER TILLY 193K**

BORN: 2/13/2022

REG: 4620763

100% AR 1A

BADLANDS CINCHED 521C

**TJS GATE KEEPER F106**

TJS LARKABA B137

BIEBER SPARTACUS A193

**BIEBER TILLY 288H**

Cow ID: 193K

BIEBER TILLY 395D

EPD Data Generated 9/28/2023

	CED	BW	WW	YW	MILK	ME	HPG	CEM	STAY	MARB	REA	FAT
EPD	14	-2.7	63	111	27	-2	9	7	16	0.30	0.21	0.01
Rank	38%	33%	42%	21%	38%	26%	89%	50%	49%	77%	32%	37%
	HERDBUILDER	56		GRIDMASTER	48		PROS	105				
	RANK	47%		RANK	27%		RANK	30%				



Calf due 2/28/2024 sired by **BROWN PRIORITY J428** or **PIE ACCENT 1612**. DNA testing will be necessary to determine sire.

12

**BIEBER MIMI 156K**

BORN: 2/4/2022

REG: 4620619

100% AR 1A

PIE STOCKMAN 4051

**BIEBER CL STOCKMARKET E119**

BIEBER CLADELLE 475C

9 MILE FRANCHISE 6305

**BIEBER MIMI 242H**

Cow ID: 156K

BIEBER MIMI 410B

EPD Data Generated 9/28/2023

	CED	BW	WW	YW	MILK	ME	HPG	CEM	STAY	MARB	REA	FAT
EPD	13	-2.5	71	120	28	5	10	10	13	0.92	0.38	0.07
Rank	47%	37%	15%	9%	31%	59%	83%	8%	76%	1%	9%	99%
	HERDBUILDER	48		GRIDMASTER	81		PROS	129				
	RANK	64%		RANK	2%		RANK	7%				



Calf due 2/29/2024 sired by **BROWN PRIORITY J428** or **PIE ACCENT 1612**. DNA testing will be necessary to determine sire.



# BRED HEIFERS



13

**BIEBER LASS 132K**

BORN: 1/16/2022

REG: 4620519

100% AR 1A

BIEBER CL ATOMIC C218

**BIEBER CL ENERGIZE F121**

BIEBER CL ADELLE 575D

BIEBER DRIVEN C540

**BIEBER LASS 279H**

Cow ID: 132K

BIEBER LASS 436A

EPD Data Generated 9/28/2023

	CED	BW	WW	YW	MILK	ME	HPG	CEM	STAY	MARB	REA	FAT
EPD	13	-2.6	69	112	30	12	14	7	15	0.51	0.44	0.04
Rank	42%	34%	22%	20%	17%	93%	10%	46%	55%	28%	6%	83%
HERDBUILDER	53											
RANK	55%											
GRIDMASTER	54											
RANK	18%											
PROS	107											
RANK	27%											



Calf due 3/2/2024 sired by BROWN PRIORITY J428 or PIE ACCENT 1612. DNA testing will be necessary to determine sire.

14

**BIEBER SUSIE 312K**

BORN: 3/4/2022

REG: 4621179

100% AR 1A

BIEBER HARD DRIVEY120

**BIEBER HIGH DENSITY H558**

BIEBER ENCHANTRESS 359B

BIEBER LB MITIGATOR C314

**BIEBER SUSIE 571F**

Cow ID: 312K

BIEBER SUSIE 254A

EPD Data Generated 9/28/2023

	CED	BW	WW	YW	MILK	ME	HPG	CEM	STAY	MARB	REA	FAT
EPD	11	-0.7	77	122	27	15	15	6	13	0.58	0.43	0.02
Rank	70%	72%	5%	8%	37%	97%	8%	75%	81%	18%	6%	58%
HERDBUILDER	34											
RANK	87%											
GRIDMASTER	32											
RANK	62%											
PROS	66											
RANK	88%											



Calf due 2/27/2024 sired by BROWN PRIORITY J428 or PIE ACCENT 1612. DNA testing will be necessary to determine sire.

15

**BIEBER BELGA 270K**

BORN: 2/24/2022

REG: 4621023

100% AR 1A

BIEBER HARD DRIVEY120

**BIEBER HIGH DENSITY H558**

BIEBER ENCHANTRESS 359B

BIEBER SPARTACUS A193

**BIEBER BELGA 581G**

Cow ID: 270K

BIEBER BELGA 345X

EPD Data Generated 9/28/2023

	CED	BW	WW	YW	MILK	ME	HPG	CEM	STAY	MARB	REA	FAT
EPD	11	0.3	79	128	24	9	14	6	16	0.37	0.49	0.01
Rank	75%	86%	4%	4%	64%	82%	15%	72%	49%	61%	4%	44%
HERDBUILDER	58											
RANK	45%											
GRIDMASTER	34											
RANK	58%											
PROS	91											
RANK	52%											



Calf due 3/4/2024 sired by BROWN PRIORITY J428 or PIE ACCENT 1612. DNA testing will be necessary to determine sire.

16

**BIEBER ENCHANTRESS 503K**

BORN: 5/9/2022

REG: 4682429

100% AR 1A

BIEBER CL ATOMIC C218

**BIEBER CL ENERGIZE F121**

BIEBER CL ADELLE 575D

BIEBER ROLLIN DEEP Y118

**BIEBER ENCHANTRESS 359B**

Cow ID: 503K

BIEBER ENCHANTRESS 147W

EPD Data Generated 9/28/2023

	CED	BW	WW	YW	MILK	ME	HPG	CEM	STAY	MARB	REA	FAT
EPD	14	-1.9	71	116	25	14	12	7	14	0.70	0.33	0.04
Rank	27%	49%	16%	14%	52%	96%	36%	55%	71%	7%	14%	93%
HERDBUILDER	35											
RANK	85%											
GRIDMASTER	60											
RANK	12%											
PROS	95											
RANK	46%											



Calf due 3/9/2024 sired by BROWN PRIORITY J428 or PIE ACCENT 1612. DNA testing will be necessary to determine sire.





# BRED HEIFERS

## 17 BIEBER ROSE 159K

BORN: 2/7/2022 REG: 4620627 100% AR 1A

LEACHMAN PLEDGE A282Z  
KJL/CLZB COMPLETE 7000E  
HXC 507C

BIEBER CL STOCKMARKET E119

### BIEBER ROSE 164H

Cow ID: 159K BIEBER ROSE 271F EPD Data Generated 9/28/2023

	CED	BW	WW	YW	MILK	ME	HPG	CEM	STAY	MARB	REA	FAT
EPD	13	-3.0	76	122	24	-2	9	8	10	0.84	0.26	0.05
Rank	44%	28%	7%	7%	69%	26%	89%	33%	93%	2%	23%	93%

HERDBUILDER	34	GRIDMASTER	85	PROS	119
RANK	87%	RANK	1%	RANK	14%



Calf due 2/27/2024 sired by BROWN PRIORITY J428 or PIE ACCENT 1612. DNA testing will be necessary to determine sire.

## 18 BIEBER PRIDE 186K

BORN: 2/12/2022 REG: 4620737 100% AR 1A

LEACHMAN PLEDGE A282Z  
KJL/CLZB COMPLETE 7000E  
HXC 507C

BIEBER CL STOCKMARKET E119

### BIEBER PRIDE 234H

Cow ID: 186K BIEBER PRIDE 127F EPD Data Generated 9/28/2023

	CED	BW	WW	YW	MILK	ME	HPG	CEM	STAY	MARB	REA	FAT
EPD	17	-3.1	75	128	27	7	14	10	14	0.88	0.28	0.05
Rank	6%	26%	8%	4%	34%	75%	9%	6%	71%	2%	20%	94%

HERDBUILDER	60	GRIDMASTER	66	PROS	126
RANK	40%	RANK	7%	RANK	9%



Calf due 2/28/2024 sired by BROWN PRIORITY J428, COOKSLEY FALLOUT 2607, or PIE ACCENT 1612. DNA testing will be necessary to determine sire.

## 19 BIEBER ROSE 442K

BORN: 6/1/2022 REG: 4662209 100% AR II

LSF SRR RANCHER 7190E  
LSF SRR MADDUX 0164H  
LSF SRR CRYSTAL C5192

BIEBER GLADIATOR C386

### BIEBER ROSE 292E

Cow ID: 442K BIEBER ROSE 246B EPD Data Generated 9/28/2023

	CED	BW	WW	YW	MILK	ME	HPG	CEM	STAY	MARB	REA	FAT
EPD	9	-2.1	72	114	23	9	14	7	8	0.70	-0.10	0.05
Rank	90%	45%	13%	17%	70%	80%	11%	57%	99%	7%	92%	93%

HERDBUILDER	14	GRIDMASTER	52	PROS	66
RANK	98%	RANK	22%	RANK	88%



Calf due 3/12/2024 sired by BROWN PRIORITY J428 or PIE ACCENT 1612. DNA testing will be necessary to determine sire. This heifer has ineligible white making her a Category II.

## 20 BIEBER MIMI 339K

BORN: 3/13/2022 REG: 4621353 100% AR 1A

HXC 5545C  
KJL/CLZB KIRKLAND 8003F  
HXC 107Y

BIEBER GLADIATOR C386

### BIEBER MIMI 391F

Cow ID: 339K BIEBER MIMI 410B EPD Data Generated 9/28/2023

	CED	BW	WW	YW	MILK	ME	HPG	CEM	STAY	MARB	REA	FAT
EPD	9	-3.0	55	95	24	1	14	5	13	0.40	-0.11	0.05
Rank	89%	28%	72%	55%	68%	38%	9%	91%	79%	52%	93%	96%

HERDBUILDER	40	GRIDMASTER	29	PROS	69
RANK	79%	RANK	67%	RANK	85%



Calf due 2/28/2024 sired by BROWN PRIORITY J428, COOKSLEY FALLOUT 2607, or PIE ACCENT 1612. DNA testing will be necessary to determine sire.





# BRED HEIFERS

21

**BIEBER ROSE 332K**

BORN: 3/10/2022 REG: 4621327 100% AR 1A

LSF SRR RANCHER 7190E

**LSF SRR MADDUX 0164H**

LSF SRR CRYSTAL C5192

MLK CRK UNIFIED 4207

**BIEBER ROSE 407G**

Cow ID: 332K BIEBER ROSE 632D EPD Data Generated 9/28/2023

	CED	BW	WW	YW	MILK	ME	HPG	CEM	STAY	MARB	REA	FAT
EPD	10	-4.2	66	110	28	11	12	7	16	0.99	-0.04	0.06
Rank	88%	12%	31%	24%	31%	90%	44%	50%	39%	1%	84%	98%
HERDBUILDER	54		GRIDMASTER	70		PROS	124					
RANK	52%		RANK	5%		RANK	10%					



*Calf due 2/28/2024 sired by BROWN PRIORITY J428 or PIE ACCENT 1612. DNA testing will be necessary to determine sire.*

23

**BIEBER SP ANKONY FLORA 157K**

BORN: 2/4/2022 REG: 4620621 100% AR 1A

PIE STOCKMAN 4051

**BIEBER CL STOCKMARKET E119**

BIEBER CLADELLE 475C

BIEBER CL STOCKMAN E116

**BIEBER ANKONY FLORA 144H**

Cow ID: 157K BIEBER ANKONY FLORA 240E EPD Data Generated 9/28/2023

	CED	BW	WW	YW	MILK	ME	HPG	CEM	STAY	MARB	REA	FAT
EPD	23	-7.5	62	99	26	3	7	15	17	0.80	0.16	0.08
Rank	1%	1%	46%	46%	51%	46%	98%	1%	28%	3%	42%	99%
HERDBUILDER	72		GRIDMASTER	32		PROS	104					
RANK	18%		RANK	61%		RANK	31%					



*Bull calf due 1/17/2024 sired by PIE ASSET 1276.*

22

**BIEBER CRYSTAL 171K**

BORN: 2/9/2022 REG: 4620673 100% AR II

BADLANDS CINCHED 521C

**TJS GATE KEEPER F106**

TJS LARKABA B137

BIEBER CL STOCKMAN E116

**BIEBER CRYSTAL 532H**

Cow ID: 171K BIEBER CRYSTAL 159B EPD Data Generated 9/28/2023

	CED	BW	WW	YW	MILK	ME	HPG	CEM	STAY	MARB	REA	FAT
EPD	17	-4.8	58	99	27	-4	9	9	17	0.43	-0.15	0.08
Rank	5%	8%	59%	45%	33%	20%	84%	10%	33%	45%	95%	99%
HERDBUILDER	71		GRIDMASTER	48		PROS	118					
RANK	20%		RANK	28%		RANK	14%					



*Calf due 2/28/2024 sired by BROWN PRIORITY J428, COOKSLEY FALLOUT 2607, or PIE ACCENT 1612. DNA testing will be necessary to determine sire. This heifer has ineligible white making her a Category II.*

## Supplement Sheets

SUPPLEMENT SHEETS WILL BE AVAILABLE ON OUR WEBSITE AND ON SALE DAY. THIS WILL INCLUDE:

- DUE DATE, CALF SEX, AND MATE ON SUMMER COWS
- BULL SCROTALS AND WEIGHTS
- CATALOG CORRECTIONS





## BRED COWS

Every year we offer bred cows out of our program. First, every cow in our herd sells when she turns seven years old. Why seven? After doing the math, we believe these females breakeven with a lot of life and fertility left in them, but they've served their purpose in our herd at that age. Second, we offer younger cows that are due later in our calving season in order to keep a tight calving window. These cows are from the heart of our program and deserve your attention if you are looking to step up the genetics in your herd. They often fit another operation's calving season quite well. Finally, we breed a large number of replacement heifers each year because we feel they offer the best genetics we've produced to date and want to utilize that. Inevitably, that means a certain number of cows have to go in order to maintain a reasonable cash flow and stocking rate.







24

## LOT 24 BIEBER MIMI 391F

*Bull calf due 4/5/2024 sired by KJL/CLZB KIRKLAND 8003F, LSF SRR BLANK CHECK 0162H, LSF SRR MADDUX 0164H, ALC MR COMPLETE H41, PIE JUST RIGHT 005, or PIE ASSET 1276. DNA testing will be necessary to determine sire.* The leadoff cow comes from the Mimi cowline, which has produced several great herd sires throughout the years. This lot has great phenotype and stamps her progeny with a similar look that is sure to catch your eye in the pen.

BORN: 3/17/2018

REG: 3958221

100% AR 1A

BIEBER SPARTACUS A193

**BIEBER GLADIATOR C386**

BIEBER LAURA 158W

BIEBER ROOSEVELT W384

**BIEBER MIMI 410B**

Cow ID: 391F

BIEBER MIMI 137Y

EPD Data Generated 9/28/2023

	CED	BW	WW	YW	MILK	ME	HPG	CEM	STAY	MARB	REA	FAT
EPD	10	-0.3	71	115	26	3	14	6	12	0.65	0.06	0.03
Rank	81%	74%	12%	10%	42%	50%	13%	77%	89%	8%	52%	78%
HERDBUILDER	41											
RANK	79%											
GRIDMASTER	60											
RANK	7%											
PROS	101											
RANK	33%											







25

## LOT 25 BIEBER EP TILLY 100H

*Heifer calf due 4/4/2024 sired by PIE FRANCHISE 9031, LSF SRR ENDOWMENT 1011J, LSF SRR COMPONENT 1112J, PIE HARD DRIVE 1227, or BROWN PRIORITY J428. DNA testing will be necessary to determine sire.* This Tilly female was in our ET program and that is likely the reason she fell out of our calving window, but don't let that stop you from snagging this gem. She is a young donor with great data and a lot of possibilities in the future. She was the first calf born and has calved at the front of every season up until we flushed her. Several of the first ET progeny came in this fall and they are going to be outstanding.

BORN: 1/2/2020

REG: 4304105

100% AR 1A

PIE STOCKMAN 4051

**BIEBER CL STOCKMAN E116**

BIEBER CL DATELINE 115C


MILWILLAH MARBLE BAR J53

**BIEBER EP TILLY 195F**

Cow ID: 100H

BIEBER TILLY 401C

EPD Data Generated 9/28/2023

	CED	BW	WW	YW	MILK	ME	HPG	CEM	STAY	MARB	REA	EAT
EPD	19	-5.1	70	119	36	8	11	12	14	0.59	0.27	0.08
Rank	1%	5%	13%	7%	2%	77%	50%	1%	74%	13%	15%	99%
HERDBUILDER RANK	57	52%	GRIDMASTER RANK	66	4%	PROS RANK	123	10%				



# BRED COWS

26

**BIEBER MIMI 197H**

BORN: 2/12/2020

REG: 4303421

100% AR 1A

PIE STOCKMAN 4051

**BIEBER CL STOCKMARKET E119**

BIEBER CLADELLE 475C

BIEBER DRIVEN C540

**BIEBER MIMI 319E**

Cow ID: 197H

BIEBER MIMI 119Z

EPD Data Generated 9/28/2023

	CED	BW	WW	YW	MILK	ME	HPG	CEM	STAY	MARB	REA	FAT
EPD	10	-1.0	91	142	32	16	12	5	13	0.83	0.63	0.04
Rank	74%	61%	1%	1%	10%	97%	39%	83%	86%	1%	1%	90%
	HERDBUILDER	28	GRIDMASTER	65	PROS	94						
	RANK	91%	RANK	5%	RANK	43%						



Heifer calf due 4/3/2024 sired by **PIE FRANCHISE 9031**, **LSF SRR ENDOWMENT 1011J**, **LSF SRR COMPONENT 1112J**, **PIE HARD DRIVE 1227**, or **BROWN PRIORITY J428**. DNA testing will be necessary to determine sire. Lot 26 stacks Stockmarket and Driven - two very maternal sires. Stockmarket was #1 for registrations in the Red Angus breed in 2023. This cow has growth in the top 1% of the breed.



Bieber  
Forefront  
B281

28

**BIEBER CHIC 422G**

BORN: 3/14/2019

REG: 4140612

100% AR 1A

PIE THE COWBOY KIND 343

**PIE COWBOY UP 5292**

TKP JEANETTE 9112

BIEBER ROLLIN DEEP Y118

**BIEBER CHIC 166A**

Cow ID: 422G

BIEBER CHIC 210S

EPD Data Generated 9/28/2023

	CED	BW	WW	YW	MILK	ME	HPG	CEM	STAY	MARB	REA	FAT
EPD	9	0.2	70	109	23	15	14	6	18	0.46	0.28	0.02
Rank	90%	81%	13%	18%	70%	97%	21%	60%	30%	32%	14%	58%
	HERDBUILDER	62	GRIDMASTER	40	PROS	102						
	RANK	43%	RANK	31%	RANK	31%						



Bull calf due 4/5/2024 sired by **KJL/CLZB KIRKLAND 8003E**, **LSF SRR BLANK CHECK 0162H**, **LSF SRR MADDUX 0164H**, **ALC MR COMPLETE H41**, **PIE JUST RIGHT 005**, or **PIE ASSET 1276**. DNA testing will be necessary to determine sire.



Bieber CL  
Stockmarket  
E119

27

**BIEBER ROSE 573H**

BORN: 3/11/2020

REG: 4308087

100% AR 1A

ANDRAS FUSION R236

**BIEBER FOREFRONT B281**

BIEBER LAURA 112W

PIE RIGHT KIND 342

**BIEBER ROSE 335D**

Cow ID: 573H

BIEBER ROSE 380B

EPD Data Generated 9/28/2023

	CED	BW	WW	YW	MILK	ME	HPG	CEM	STAY	MARB	REA	FAT
EPD	12	0.5	70	118	31	9	16	11	15	0.46	0.18	-0.01
Rank	53%	85%	13%	8%	13%	82%	4%	3%	59%	32%	28%	5%
	HERDBUILDER	75	GRIDMASTER	48	PROS	124						
	RANK	21%	RANK	18%	RANK	9%						



Bull calf due 4/4/2024 sired by **PIE FRANCHISE 9031**, **LSF SRR ENDOWMENT 1011J**, **LSF SRR COMPONENT 1112J**, **PIE HARD DRIVE 1227**, or **BROWN PRIORITY J428**. DNA testing will be necessary to determine sire. This is one of the few Forefront daughters we have offered and is the result of our ET program. Her first son sold to Ammanns, one of our most selective bull customers. Not only do they top the calf market each year, their heifers are some of the most sought after females around. Lot 27 posts a MPPA of 104 with balanced data across the board.

29

**BIEBER PRIDE 127F**

BORN: 1/9/2018

REG: 3958727

100% AR 1A

ANDRAS FUSION R236

**BIEBER CL ATOMIC C218**

BIEBER DATELINE 308Y

BIEBER HARD DRIVE Y120

**BIEBER PRIDE 153D**

Cow ID: 127F

BIEBER PRIDE 430B

EPD Data Generated 9/28/2023

	CED	BW	WW	YW	MILK	ME	HPG	CEM	STAY	MARB	REA	FAT
EPD	12	-1.4	80	126	34	12	12	7	13	0.43	0.04	0
Rank	47%	54%	2%	3%	6%	92%	47%	49%	84%	38%	57%	15%
	HERDBUILDER	27	GRIDMASTER	32	PROS	59						
	RANK	92%	RANK	46%	RANK	88%						



Heifer calf due 4/5/2024 sired by **KJL/CLZB KIRKLAND 8003E**, **LSF SRR BLANK CHECK 0162H**, **LSF SRR MADDUX 0164H**, **ALC MR COMPLETE H41**, **PIE JUST RIGHT 005**, or **PIE ASSET 1276**. DNA testing will be necessary to determine sire.



# BRED COWS

30

**BIEBER KANNA 534G**

BORN: 3/20/2019

REG: 4153826

100% AR 1A

LSF SAGA 1040Y

**PIE STOCKMAN 4051**

PIE LAKOTA 046

BIEBER MAKIN HAY 9913

**BIEBER KANNA 381X**

Cow ID: 534G

BIEBER KANNA 10132

EPD Data Generated 9/28/2023

	CED	BW	WW	YW	MILK	ME	HPG	CEM	STAY	MARB	REA	FAT
EPD	16	-2.1	65	108	24	13	9	10	16	0.56	0.22	0.01
Rank	11%	41%	25%	20%	65%	93%	89%	9%	51%	16%	21%	34%

HERDBUILDER 48 RANK 67% GRIDMASTER 58 RANK 9% PROS 106 RANK 25%



Heifer calf due 2/21/2024 sired by LSF SRR EXACTLY 1144J.



31

**BIEBER ODA 267E**

BORN: 2/20/2017

REG: 3752551

100% AR 1A

LACY GOLD BAR 8123

**BIEBER HARD DRIVE Y120**

BIEBER LAURA 158W

BIEBER ROLLIN DEEP Y118

**BIEBER ODA 187A**

Cow ID: 267E

BIEBER ODA 204W

EPD Data Generated 9/28/2023

	CED	BW	WW	YW	MILK	ME	HPG	CEM	STAY	MARB	REA	FAT
EPD	10	0.9	74	118	29	8	16	5	14	0.41	0.38	0.01
Rank	82%	89%	7%	8%	24%	77%	6%	86%	71%	42%	7%	41%

HERDBUILDER 49 RANK 67% GRIDMASTER 38 RANK 36% PROS 86 RANK 55%



Heifer calf due 3/30/2024 sired by PIE FRANCHISE 9031, LSF SRR ENDOWMENT 1011J, LSF SRR COMPONENT 1112J, PIE HARD DRIVE 1227, or BROWN PRIORITY J428. DNA testing will be necessary to determine sire.



32

**BIEBER DURHEIM 143F**

BORN: 1/13/2018

REG: 3958699

98.4% AR 1.6% XX 1B

BIEBER HARD DRIVE Y120

**BIEBER DRIVEN C540**

BIEBER JOAN 309Y

MLK CRK UNIFIED 4207

**BIEBER DURHEIM 214D**

Cow ID: 143F

118 BD3P

EPD Data Generated 9/28/2023

	CED	BW	WW	YW	MILK	ME	HPG	CEM	STAY	MARB	REA	FAT
EPD	12	-3.9	65	103	36	1	15	11	16	0.73	0.52	0
Rank	50%	14%	27%	30%	2%	37%	12%	3%	46%	4%	2%	20%

HERDBUILDER 80 RANK 16% GRIDMASTER 67 RANK 4% PROS 146 RANK 2%



Bull calf due 3/20/2024 sired by HXC BLUE COLLAR 8820F This Driven daughter is the kind he's famous for producing. She is a 1B, but it's difficult to find a cow with this kind of data and record.





# BRED COWS



33

**BIEBER RENEE 265E**

BORN: 2/20/2017

REG: 3752217

100% AR 1A

BIEBER ROLLIN DEEP Y118

**BIEBER LB MITIGATOR C314**

BIEBER TILLY 143Y

HUST CHIEF SEQUOYA R336

**BIEBER RENEE 463Z**

Cow ID: 265E

OLC RENEE S188

EPD Data Generated 9/28/2023

	CED	BW	WW	YW	MILK	ME	HPG	CEM	STAY	MARB	REA	FAT
EPD	10	-0.4	66	108	31	5	17	7	17	0.32	0.06	0.01
Rank	74%	72%	22%	20%	13%	64%	4%	41%	42%	64%	52%	28%
HERDBUILDER	79											
RANK	17%											
GRIDMASTER	19											
RANK	74%											
PROS	97											
RANK	37%											



Heifer calf due 4/1/2024 sired by KJL/CLZB KIRKLAND 8003E, LSF SRR BLANK CHECK 0162H, LSF SRR MADDUX 0164H, ALC MR COMPLETE H41, PIE JUST RIGHT 005, or PIE ASSET 1276. DNA testing will be necessary to determine sire.

34

**BIEBER LAURA 542F**

BORN: 3/28/2018

REG: 3966349

100% AR 1A

ANDRAS FUSION R236

**BIEBER FOREFRONT B281**

BIEBER LAURA 112W

BIEBER 50 SHILLING U244

**BIEBER LAURA 214X**

Cow ID: 542F

BASIN LAURA 7905

EPD Data Generated 9/28/2023

	CED	BW	WW	YW	MILK	ME	HPG	CEM	STAY	MARB	REA	FAT
EPD	12	0.3	75	128	32	6	15	5	15	0.78	0.12	0.02
Rank	48%	82%	5%	3%	9%	65%	11%	83%	61%	2%	39%	58%
HERDBUILDER	59											
RANK	49%											
GRIDMASTER	80											
RANK	1%											
PROS	138											
RANK	3%											



Bull calf due 4/5/2024 sired by KJL/CLZB KIRKLAND 8003E, LSF SRR BLANK CHECK 0162H, LSF SRR MADDUX 0164H, ALC MR COMPLETE H41, PIE JUST RIGHT 005, or PIE ASSET 1276. DNA testing will be necessary to determine sire.



35

**BIEBER ROSE 350G**

BORN: 2/22/2019

REG: 4140362

100% AR 1A

BIEBER SPARTACUS A193

**BIEBER TIBERIUS E254**

BIEBER PRIMROSE 512B

BIEBER H HUGHES W109

**BIEBER ROSE 513C**

Cow ID: 350G

BASIN ROSE 06T0

EPD Data Generated 9/28/2023

	CED	BW	WW	YW	MILK	ME	HPG	CEM	STAY	MARB	REA	FAT
EPD	15	-5.1	63	91	33	15	12	13	15	0.59	0.00	0.08
Rank	15%	5%	35%	56%	6%	96%	36%	1%	69%	13%	66%	99%
HERDBUILDER	57											
RANK	53%											
GRIDMASTER	18											
RANK	75%											
PROS	75											
RANK	72%											



Bull calf due 3/30/2024 sired by KJL/CLZB KIRKLAND 8003E, LSF SRR BLANK CHECK 0162H, LSF SRR MADDUX 0164H, ALC MR COMPLETE H41, PIE JUST RIGHT 005, or PIE ASSET 1276. DNA testing will be necessary to determine sire.







LOT 36 BIEBER TORYANNA 289D

Heifer calf due 4/4/2024 sired by PIE FRANCHISE 9031, LSF SRR ENDOWMENT 1011J, LSF SRR COMPONENT 1112J, PIE HARD DRIVE 1227, or BROWN PRIORITY J428. DNA testing will be necessary to determine sire. Lot 36 leads off the 7-year-old cows that we offer each year in this sale. She has been flushed in our ET program and has posted some great data. She is in the top 3% for ProS and gives you traits that work across the industry.

BORN: 2/16/2016REG: 3536937100% AR 1A

BIEBER ROOSEVELT W384

BIEBER ROLLIN DEEP Y118

BIEBER TILLY 399W

BIEBER H HUGHESW109

BIEBER TORYANNA 459A

Cow ID: 289DBIEBER TORYANNA 309S

EPD Data Generated 9/28/2023

	CED	BW	WW	YW	MILK	ME	HPG	CEM	STAY	MARB	REA	FAT
EPD	12	-2.6	70	109	32	-1	13	8	21	0.68	0.11	0.07
Rank	47%	32%	12%	19%	9%	30%	34%	29%	5%	6%	41%	99%

HERDBUILDER103RANK2%

GRIDMASTER34RANK42%

ProS138RANK3%



# BRED COWS



37

## BIEBER ENCHANTRESS 530D

BORN: 3/25/2016

REG: 3537051

100% AR 1A

BIEBER ROOSEVELT W384

BIEBER ROLLIN DEEPLY118

BIEBER TILLY 399W

LACY GOLD BAR 8123

BIEBER ENCHANTRESS 166Y

Cow ID: 530D

BASIN ENCHANTRESS 58UO

EPD Data Generated 9/28/2023

	CED	BW	WW	YW	MILK	ME	HPG	CEM	STAY	MARB	REA	FAT
EPD	12	-1.8	64	104	25	12	16	8	20	0.42	0.49	0
Rank	58%	46%	28%	28%	50%	92%	7%	21%	11%	40%	3%	24%
HERDBUILDER	82											
RANK	13%											
GRIDMASTER	52											
RANK	14%											
PROS	134											
RANK	5%											



Heifer calf due 2/22/2024 sired by BIEBER CL ENERGIZE F121. Lot 37 comes from the impressive Enchantress cowline, and has been flushed along with her dam, granddam and great granddam. That is prepotency. As you look across the breed her data will be hard to match.

38

## BIEBER PRIMROSE 109D

BORN: 1/16/2016

REG: 3536606

100% AR II

LACY GOLD BAR 8123

BIEBER HARD DRIVEY120

BIEBER LAURA 158W

BIEBER ROUSE SAMURAI X22

BIEBER PRIMROSE 476B

Cow ID: 109D

BASIN PRIMROSE 24T9

EPD Data Generated 9/28/2023

	CED	BW	WW	YW	MILK	ME	HPG	CEM	STAY	MARB	REA	FAT
EPD	21	-8.0	53	81	27	4	13	11	13	0.67	-0.12	0
Rank	1%	1%	71%	76%	40%	54%	31%	1%	84%	7%	87%	18%
HERDBUILDER	38											
RANK	82%											
GRIDMASTER	25											
RANK	61%											
PROS	63											
RANK	85%											



Heifer calf due 3/29/2024 sired by KJL/CLZB KIRKLAND 8003E LSF SRR BLANK CHECK 0162H, LSF SRR MADDUX 0164H, ALC MR COMPLETE H41, PIE JUST RIGHT 005, or PIE ASSET 1276. DNA testing will be necessary to determine sire. This cow has ineligible white making her a Category II. Lot 38 is a Hard Drive daughter that will catch your eye. She offers one of the best cowlines in our herd with Primrose. This cow provides calving ease deluxe and can make you a high powered herdsire that works well.



38

39

## BIEBER TILLY 602D

BORN: 5/3/2016

REG: 3537218

100% AR 1A

BIEBER ROUSE SAMURAI X22

BIEBER SPARTACUS A193

BIEBER TILLY 233U

HUST CHIEF SEQUOYA R336

BIEBER ADELLE 297Y

Cow ID: 602D

BIEBER ADELLE 7226

EPD Data Generated 9/28/2023

	CED	BW	WW	YW	MILK	ME	HPG	CEM	STAY	MARB	REA	FAT
EPD	14	-3.4	67	107	29	9	10	9	15	0.57	-0.01	0.04
Rank	25%	20%	20%	22%	26%	84%	77%	14%	65%	15%	68%	93%
HERDBUILDER	40											
RANK	79%											
GRIDMASTER	36											
RANK	40%											
PROS	76											
RANK	70%											



Heifer calf due 2/21/2024 sired by BIEBER CL ENERGIZE F121. Lot 39 is a maternal sister to Adelle 475C, so don't miss her. She was misnamed as a calf but make no mistake she is parent verified.



39



# BRED COWS

40

BIEBER CHIEFNESS 208D

BORN: 2/10/2016 REG: 3536459 100% AR 1A

ANDRAS FUSION R236

MLK CRK UNIFIED 4207

MLK CRK LAKOTA 953

LSF RAB EXCLUSIVE 2793Z

BIEBER CHIEFNESS 209B

Cow ID: 208D BIEBER CHIEFTNESS 102Y EPD Data Generated 9/28/2023

	CED	BW	WW	YW	MILK	ME	HPG	CEM	STAY	MARB	REA	FAT
EPD	8	0.4	71	105	34	15	11	7	14	0.56	0.36	0.04
Rank	91%	84%	11%	25%	4%	96%	64%	43%	72%	16%	8%	91%
HERDBUILDER	25		GRIDMASTER	37		PROS	62					
RANK	93%		RANK	37%		RANK	86%					



Heifer calf due 3/15/2024 sired by PIE FRANCHISE 9031, LSF SRR ENDOWMENT 1011J, LSF SRR COMPONENT 1112J, PIE HARD DRIVE 1227, or BROWN PRIORITY J428. DNA testing will be necessary to determine sire.

42

BIEBER PERCY 227D

BORN: 2/12/2016 REG: 3536926 100% AR 1A

LACY GOLD BAR 8123

BIEBER HARD DRIVE Y120

BIEBER LAURA 158W

BIEBER ROOSEVELT W384

BIEBER PERCY 427A

Cow ID: 227D BIEBER PERCY 303U EPD Data Generated 9/28/2023

	CED	BW	WW	YW	MILK	ME	HPG	CEM	STAY	MARB	REA	FAT
EPD	16	-0.7	76	120	28	9	14	9	15	0.49	0.33	0.02
Rank	12%	67%	4%	6%	30%	82%	14%	13%	59%	26%	10%	53%
HERDBUILDER	62		GRIDMASTER	49		PROS	111					
RANK	43%		RANK	18%		RANK	20%					



Heifer calf due 2/24/2024 sired by BIEBER CL STOCKMARKET E119.

41

BIEBER GOLDIE 328D

BORN: 2/24/2016 REG: 3536683 100% AR 1A

BIEBER ROOSEVELT W384

BIEBER ROLLIN DEEPLY118

BIEBER TILLY 399W

BIEBER GUN SLINGER W361

BIEBER GOLDIE 117Y

Cow ID: 328D BIEBER GOLDIE 236W EPD Data Generated 9/28/2023

	CED	BW	WW	YW	MILK	ME	HPG	CEM	STAY	MARB	REA	FAT
EPD	6	1.6	69	105	27	11	14	6	16	0.39	0.15	0.07
Rank	98%	94%	14%	26%	37%	89%	16%	72%	49%	47%	33%	99%
HERDBUILDER	52		GRIDMASTER	5		PROS	57					
RANK	61%		RANK	93%		RANK	89%					



Calf due 2/21/2024 sired by BIEBER CL ENERGIZE F121.

43

BIEBER PRIDE 342D

BORN: 2/23/2016 REG: 3536428 100% AR 1A

BUF CRK THE RIGHT KIND U199

PIE RIGHT KIND 342

PIE FAYE 1278

BIEBER H HUGHESW109

BIEBER PRIDE 150B

Cow ID: 324D BIEBER PRIDE 127Z EPD Data Generated 9/28/2023

	CED	BW	WW	YW	MILK	ME	HPG	CEM	STAY	MARB	REA	FAT
EPD	10	0.8	69	108	33	8	14	8	16	0.22	-0.06	0.01
Rank	80%	88%	14%	20%	6%	80%	14%	25%	53%	86%	78%	34%
HERDBUILDER	62		GRIDMASTER	12		PROS	74					
RANK	43%		RANK	85%		RANK	73%					



Bull calf due 2/24/2024 sired by BIEBER CL STOCKMARKET E119.





# BRED COWS

44

**BIEBER MONA 404D**

BORN: 3/30/2016 REG: 3536894 100% AR 1A

SCHULER NEBULA P707 0050X

**SCHULER ENDURANCE 2101Z**

SOR FIREFLY DYNATREND 0431X

LCOC HIGH NOON A093R

**BIEBER MONA 361Z**

Cow ID: 404D BASIN MONA 5330 EPD Data Generated 9/28/2023

	CED	BW	WW	YW	MILK	ME	HPG	CEM	STAY	MARB	REA	FAT
EPD	10	0.4	73	135	29	12	10	7	16	0.49	0.16	0.02
Rank	80%	84%	8%	1%	25%	93%	68%	51%	49%	26%	31%	63%

HERDBUILDER 49 GRIDMASTER 73 PROS 122  
RANK 66% RANK 2% RANK 10%



Heifer calf due 3/15/2024 sired by PIE FRANCHISE 9031, LSF SRR ENDOWMENT 1011J, LSF SRR COMPONENT 1112J, PIE HARD DRIVE 1227, or BROWN PRIORITY J428. DNA testing will be necessary to determine sire.

46

**BIEBER TORYANNA 310D**

BORN: 2/19/2016 REG: 3536860 100% AR 1A

BIEBER ROOSEVELT W384

**BIEBER ROLLIN DEEP Y118**

BIEBER TILLY 399W

LCC FIELD DAY A614N

**BIEBER TORYANNA 313W**

Cow ID: 310D BIEBER TORYANNA 6952 EPD Data Generated 9/28/2023

	CED	BW	WW	YW	MILK	ME	HPG	CEM	STAY	MARB	REA	FAT
EPD	15	-2.4	59	88	27	2	14	9	17	0.22	0.12	0.04
Rank	18%	35%	51%	63%	38%	43%	15%	14%	34%	86%	39%	89%

HERDBUILDER 80 GRIDMASTER 11 PROS 92  
RANK 15% RANK 86% RANK 46%



Bull calf due 3/10/2024 sired by PIE FRANCHISE 9031, LSF SRR ENDOWMENT 1011J, LSF SRR COMPONENT 1112J, PIE HARD DRIVE 1227, or BROWN PRIORITY J428. DNA testing will be necessary to determine sire.

45

**BIEBER TILLY 563D**

BORN: 4/8/2016 REG: 3537098 100% AR 1A

LACY GOLD BAR 8123

**BIEBER HARD DRIVE Y120**

BIEBER LAURA 158W

LCOC HIGH NOON A093R

**BIEBER TILLY 233U**

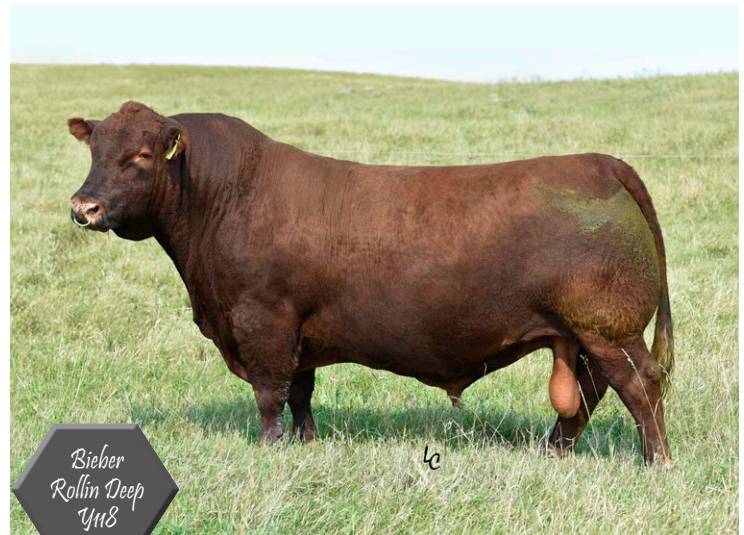
Cow ID: 563D BIEBER TILLY 7334 EPD Data Generated 9/28/2023

	CED	BW	WW	YW	MILK	ME	HPG	CEM	STAY	MARB	REA	FAT
EPD	12	1.5	81	132	30	11	14	4	15	0.55	0.78	-0.02
Rank	54%	93%	2%	2%	19%	89%	21%	89%	60%	17%	1%	2%

HERDBUILDER 41 GRIDMASTER 69 PROS 109  
RANK 78% RANK 3% RANK 21%



Heifer calf due 2/22/2024 sired by BIEBER CL STOCKMARKET E119.





# BRED COWS

47

BIEBER PRIMROSE 534D

BORN: 3/26/2016

REG: 3537055

100% AR 1A

LACY GOLD BAR 8123

BIEBER HARD DRIVE Y120

BIEBER LAURA 158W

BFCK CHEROKEE CNYN 4912

BASIN PRIMROSE 2043

Cow ID: 534D

BASIN PRIMROSE 0854

EPD Data Generated 9/28/2023

	CED	BW	WW	YW	MILK	ME	HPG	CEM	STAY	MARB	REA	FAT
EPD	16	-2.3	70	104	28	6	13	7	19	0.56	0.47	-0.02
Rank	10%	37%	14%	27%	32%	67%	23%	43%	20%	16%	4%	3%
HERDBUILDER	77											
RANK	19%											
GRIDMASTER	61											
RANK	7%											
PROS	138											
RANK	3%											



Bull calf due 2/19/2024 sired by BIEBER CL ENERGIZE F121.

48

BIEBER DC SURPRISE 533H

BORN: 3/22/2020

REG: 4308277

100% AR 1A

ANDRAS FUSION R236

BIEBER FOREFRONT B281

BIEBER LAURA 112W

BIEBER ROLLIN DEEP Y118

BIEBER SURPRISE 243D

Cow ID: 533H

BIEBER SURPRISE 288A

EPD Data Generated 9/28/2023

	CED	BW	WW	YW	MILK	ME	HPG	CEM	STAY	MARB	REA	FAT
EPD	3	3.6	88	146	34	18	15	4	13	0.28	0.51	-0.01
Rank	99%	99%	1%	1%	5%	99%	13%	90%	86%	74%	3%	6%
HERDBUILDER	26											
RANK	92%											
GRIDMASTER	46											
RANK	21%											
PROS	72											
RANK	75%											



Bull calf due 3/29/2024 sired by KJL/CLZB KIRKLAND 8003E LSF SRR BLANK CHECK 0162H, LSF SRR MADDUX 0164H, ALC MR COMPLETE H41, PIE JUST RIGHT 005, or PIE ASSET 1276. DNA testing will be necessary to determine sire.

49

BIEBER TORYANNA 378H

BORN: 5/4/2020

REG: 4324559

100% AR 1A

BIEBER SPARTACUS A193

BIEBER TIBERIUS E254

BIEBER PRIMROSE 512B

BIEBER CLATOMIC C218

BIEBER TORYANNA 105F

Cow ID: 378H

BIEBER TORYANNA 519D

EPD Data Generated 9/28/2023

	CED	BW	WW	YW	MILK	ME	HPG	CEM	STAY	MARB	REA	FAT
EPD	16	-3.9	60	105	36	11	12	10	13	0.39	0.11	0.05
Rank	8%	14%	44%	26%	2%	88%	41%	4%	81%	47%	41%	96%
HERDBUILDER	45											
RANK	73%											
GRIDMASTER	36											
RANK	38%											
PROS	81											
RANK	63%											



Calf due 3/29/2024 sired by KJL/CLZB KIRKLAND 8003E LSF SRR BLANK CHECK 0162H, LSF SRR MADDUX 0164H, ALC MR COMPLETE H41, PIE JUST RIGHT 005, or PIE ASSET 1276. DNA testing will be necessary to determine sire.







## BRED COWS

50

BIEBER DURHIEM 467H

BORN: 5/27/2020

REG: 4325023 71.9% AR 24.2% SM 3.9% XX III

LOOSLI RIGHT ON 423

BIEBER RIGHT ON F633

BIEBER BELGA 345X

WS BEEF MAKER R13

BIEBER DURHIEM 294Z

Cow ID: 467H

BD3P DURHEIM 596

EPD Data Generated 9/28/2023

	CED	BW	WW	YW	MILK	ME	HPG	CEM	STAY	MARB	REA	FAT
EPD	11	-1.7	71	109	32	1	17	7	17	0.16	0.70	0.01
Rank	70%	48%	11%	18%	10%	40%	3%	45%	41%	94%	1%	28%
HERDBUILDER	85				GRIDMASTER	14		PROS	99			
RANK		11%			RANK	82%		RANK	35%			



Heifer calf due 3/22/2024 sired by HXC BLUE COLLAR 8820E

51

BIEBER SURPRISE 415G

BORN: 3/11/2019

REG: 4140588

100% AR 1A

LACY GOLD BAR 8123

BIEBER HARD DRIVE Y120

BIEBER LAURA 158W

PARINGA IRON ORE E27

BIEBER SURPRISE 239B

Cow ID: 415G

BIEBER SUPRISE 262U

EPD Data Generated 9/28/2023

	CED	BW	WW	YW	MILK	ME	HPG	CEM	STAY	MARB	REA	FAT
EPD	11	0.9	72	118	23	21	16	7	11	0.58	0.18	-0.02
Rank	61%	89%	10%	8%	69%	99%	7%	54%	92%	14%	28%	3%
HERDBUILDER	23				GRIDMASTER	62		PROS	85			
RANK		94%			RANK	6%		RANK	57%			



Heifer calf due 4/4/2024 sired by PIE FRANCHISE 9031, LSF SRR ENDOWMENT 1011J, LSF SRR COMPONENT 1112J, PIE HARD DRIVE 1227, or BROWN PRIORITY J428. DNA testing will be necessary to determine sire.

52

BIEBER PRIDE 431G

BORN: 3/17/2019

REG: 4140640

100% AR 1A

LACY GOLD BAR 8123

BIEBER HARD DRIVE Y120

BIEBER LAURA 158W

BIEBER H HUGHESW109

BIEBER PRIDE 150B

Cow ID: 431G

BIEBER PRIDE 127Z

EPD Data Generated 9/28/2023

	CED	BW	WW	YW	MILK	ME	HPG	CEM	STAY	MARB	REA	FAT
EPD	10	0.9	84	131	28	24	16	7	16	0.41	0.49	0
Rank	81%	89%	1%	2%	29%	99%	6%	45%	49%	42%	3%	10%
HERDBUILDER	55				GRIDMASTER	43		PROS	98			
RANK		56%			RANK	26%		RANK	37%			



Bull calf due 3/30/2024 sired by PIE FRANCHISE 9031, LSF SRR ENDOWMENT 1011J, LSF SRR COMPONENT 1112J, PIE HARD DRIVE 1227, or BROWN PRIORITY J428. DNA testing will be necessary to determine sire.



# BRED COWS



53

**BIEBER PRIMROSE 367H**

BORN: 5/1/2020 REG: 4324517 100% AR 1A

BIEBER SPARTACUS A193

**BIEBER MAXIMUS E294**

BIEBER LINCOLN 189A

BIEBER ROLLIN DEEP Y118

**BIEBER LAKOTA 409C**

Cow ID: 367H BIEBER LAKOTA 103W EPD Data Generated 9/28/2023

	CED	BW	WW	YW	MILK	ME	HPG	CEM	STAY	MARB	REA	FAT
EPD	7	2.1	85	139	20	15	14	8	9	0.60	0.36	0.05
Rank	97%	96%	1%	1%	87%	96%	20%	35%	97%	12%	8%	96%
	HERDBUILDER	19		GRIDMASTER	63		PROS	82				
	RANK	96%		RANK	6%		RANK	61%				



Heifer calf due 2/22/2024 sired by BIEBER CL ENERGIZE F121.

54

**BIEBER LINCOLN 142H**

BORN: 1/29/2020 REG: 4303205 100% AR 1A

PIE STOCKMAN 4051

**BIEBER CL STOCKMAN E116**

BIEBER CL DATELINE 115C

BIEBER GLADIATOR C386

**BIEBER LINCOLN 479F**

Cow ID: 142H BIEBER LINCOLN 176Z EPD Data Generated 9/28/2023

	CED	BW	WW	YW	MILK	ME	HPG	CEM	STAY	MARB	REA	FAT
EPD	15	-4.3	70	119	32	8	11	10	11	0.49	0.12	0.05
Rank	16%	11%	14%	8%	9%	78%	54%	4%	95%	26%	39%	95%
	HERDBUILDER	33		GRIDMASTER	43		PROS	76				
	RANK	87%		RANK	27%		RANK	71%				



Heifer calf due 4/5/2024 sired by KJL/CLZB KIRKLAND 8003E, LSF SRR BLANK CHECK 0162H, LSF SRR MADDUX 0164H, ALC MR COMPLETE H41, PIE JUST RIGHT 005, or PIE ASSET 1276. DNA testing will be necessary to determine sire.

55

**BIEBER SURPRISE 515E**

BORN: 3/14/2017 REG: 3761711 100% AR 1A

BIEBER SPARTACUS A193

**BIEBER GLADIATOR C386**

BIEBER LAURA 158W

BROWN VACATION H7106

**BIEBER SURPRISE 278X**

Cow ID: 515E BIEBER SURPRISE 192T EPD Data Generated 9/28/2023

	CED	BW	WW	YW	MILK	ME	HPG	CEM	STAY	MARB	REA	FAT
EPD	13	-4.1	64	107	33	21	12	7	15	0.56	0.01	-0.01
Rank	40%	12%	28%	21%	8%	99%	36%	49%	67%	16%	63%	4%
	HERDBUILDER	26		GRIDMASTER	50		PROS	76				
	RANK	92%		RANK	17%		RANK	70%				



Heifer calf due 4/4/2024 sired by PIE FRANCHISE 9031, LSF SRR ENDOWMENT 1011J, LSF SRR COMPONENT 1112J, PIE HARD DRIVE 1227, or BROWN PRIORITY J428. DNA testing will be necessary to determine sire.

56

**BIEBER ADELLE 609D**

BORN: 5/4/2016 REG: 3537225 100% AR 1A

BIEBER ROUSE SAMURAI X22

**BIEBER SPARTACUS A193**

BIEBER TILLY 233U

HUST CHIEF SEQUOYA R336

**BIEBER ADELLE 311Y**

Cow ID: 609D BIEBER ADELLE 8958 EPD Data Generated 9/28/2023

	CED	BW	WW	YW	MILK	ME	HPG	CEM	STAY	MARB	REA	FAT
EPD	17	-6.3	60	87	26	-2	13	11	14	0.29	0.13	0.04
Rank	5%	2%	47%	66%	42%	24%	34%	3%	79%	71%	37%	85%
	HERDBUILDER	57		GRIDMASTER	12		PROS	69				
	RANK	51%		RANK	86%		RANK	78%				



Bull calf due 2/28/2024 sired by KJL/CLZB KIRKLAND 8003E, LSF SRR BLANK CHECK 0162H, LSF SRR MADDUX 0164H, ALC MR COMPLETE H41, PIE JUST RIGHT 005, or PIE ASSET 1276. DNA testing will be necessary to determine sire.





# BRED COWS

57

BIEBER PRIMROSE 240D

BORN: 2/13/2016 REG: 3536673 100% AR 1A

BIEBER ROOSEVELT W384

BIEBER ROLLIN DEEP Y118

BIEBER TILLY 399W

PARINGA IRON ORE E27

BIEBER PRIMROSE 108A

Cow ID: 240D BIEBER PRIMROSE 285Y EPD Data Generated 9/28/2023

	CED	BW	WW	YW	MILK	ME	HPG	CEM	STAY	MARB	REA	FAT
EPD	9	-0.9	66	105	23	7	18	7	19	0.46	0.14	0.03
Rank	86%	63%	24%	25%	72%	76%	2%	39%	20%	32%	35%	78%
HERDBUILDER	85		GRIDMASTER	30		PROS	115					
RANK	11%		RANK	50%		RANK	15%					



Heifer calf due 2/21/2024 sired by LSF SRR EXACTLY 1144J.

58

BIEBER PRIMROSE 629D

BORN: 3/28/2016 REG: 3537257 100% AR 1A

LACY GOLD BAR 8123

BIEBER HARD DRIVE Y120

BIEBER LAURA 158W

BFCK CHEROKEE CNYN 4912

BASIN PRIMROSE 2043

Cow ID: 629D BASIN PRIMROSE 0854 EPD Data Generated 9/28/2023

	CED	BW	WW	YW	MILK	ME	HPG	CEM	STAY	MARB	REA	FAT
EPD	13	-3.8	58	84	26	7	12	5	14	0.37	0.47	-0.03
Rank	44%	15%	53%	71%	44%	71%	44%	81%	72%	52%	4%	1%
HERDBUILDER	33		GRIDMASTER	25		PROS	58					
RANK	87%		RANK	62%		RANK	89%					



Bull calf due 4/4/2024 sired by PIE FRANCHISE 9031, LSF SRR ENDOWMENT 1011J, LSF SRR COMPONENT 1112J, PIE HARD DRIVE 1227, or BROWN PRIORITY J428. DNA testing will be necessary to determine sire.

59

BIEBER JOAN 580D

BORN: 4/12/2016 REG: 3537142 100% AR 1A

SCHULER NEBULA P707 0050X

SCHULER ENDURANCE 2101Z

SOR FIREFLY DYNATREND 0431X

BASIN EXT 5233

BASIN ELDORENE 7467

Cow ID: 580D BASIN ELDORENE 4209 EPD Data Generated 9/28/2023

	CED	BW	WW	YW	MILK	ME	HPG	CEM	STAY	MARB	REA	FAT
EPD	17	-1.8	63	118	26	16	12	10	14	0.46	0.25	-0.01
Rank	5%	46%	34%	8%	42%	97%	36%	4%	71%	32%	17%	5%
HERDBUILDER	38		GRIDMASTER	75		PROS	113					
RANK	82%		RANK	2%		RANK	17%					



Heifer calf due 3/13/2024 sired by PIE FRANCHISE 9031, LSF SRR ENDOWMENT 1011J, LSF SRR COMPONENT 1112J, PIE HARD DRIVE 1227, or BROWN PRIORITY J428. DNA testing will be necessary to determine sire.

60

BIEBER ENCHANTRESS 547D

BORN: 4/4/2016 REG: 3537068 100% AR II

HXC CONQUEST 4405P

LSFTAKEOVER 9943W

LSFWIDELOAD R5014 U8061

BASIN EXT 5233

BASIN ENCHANTRESS 58U0

Cow ID: 547D BASIN ENCHANTRESS 5348 EPD Data Generated 9/28/2023

	CED	BW	WW	YW	MILK	ME	HPG	CEM	STAY	MARB	REA	FAT
EPD	15	-4.6	53	83	24	5	10	8	16	0.85	0.35	0.02
Rank	16%	8%	73%	72%	61%	63%	67%	29%	49%	1%	9%	53%
HERDBUILDER	61		GRIDMASTER	73		PROS	134					
RANK	44%		RANK	2%		RANK	4%					



Calf due 3/3/2024 sired by HXC BLUE COLLAR 8820E. This cow is black.





# BRED COWS

61

BIEBER ADELLE 231D

BORN: 2/12/2016 REG: 3536697 100% AR 1A

LACY GOLD BAR 8123

BIEBER HARD DRIVEY120

BIEBER LAURA 158W

VGW OLY 903

BIEBER ADELLE 127A

Cow ID: 231D BIEBER ADELLE 311Y EPD Data Generated 9/28/2023

	CED	BW	WW	YW	MILK	ME	HPG	CEM	STAY	MARB	REA	FAT
EPD	15	-3.3	74	121	21	10	15	10	13	0.51	0.40	-0.01
Rank	15%	21%	6%	6%	79%	87%	11%	9%	83%	23%	6%	3%
HERDBUILDER	48				GRIDMASTER	67			PROS	115		
RANK	68%				RANK	4%			RANK	16%		



Heifer calf due 2/26/2024 sired by BIEBER CL STOCKMARKET E119.

62

BIEBER TOP LINE 230D

BORN: 2/12/2016 REG: 3536930 100% AR 1A

LACY GOLD BAR 8123

BIEBER HARD DRIVEY120

BIEBER LAURA 158W

HXC CONQUEST 4405P

BIEBER TOP LINE 444Z

Cow ID: 230D BIEBER TOP LINE 8924 EPD Data Generated 9/28/2023

	CED	BW	WW	YW	MILK	ME	HPG	CEM	STAY	MARB	REA	FAT
EPD	11	-1.7	73	117	21	13	13	8	16	0.28	0.22	0
Rank	65%	48%	7%	9%	79%	94%	31%	37%	55%	74%	21%	18%
HERDBUILDER	45				GRIDMASTER	25			PROS	71		
RANK	72%				RANK	60%			RANK	77%		



Calf due 2/21/2024 sired by BIEBER CL ENERGIZE F121.

63

BIEBER PRIMROSE 203D

BORN: 2/10/2016 REG: 3536956 100% AR 1A

BIEBER ROOSEVELT W384

BIEBER ROLLIN DEEP Y118

BIEBER TILLY 399W

BIEBER ROUSE SAMURAI X22

BIEBER PRIMROSE 479A

Cow ID: 203D BASIN PRIMROSE 24T9 EPD Data Generated 9/28/2023

	CED	BW	WW	YW	MILK	ME	HPG	CEM	STAY	MARB	REA	FAT
EPD	16	-3.9	57	87	26	-2	13	10	17	0.58	0.11	0.06
Rank	10%	14%	56%	64%	47%	25%	32%	9%	45%	14%	41%	98%
HERDBUILDER	71				GRIDMASTER	32			PROS	102		
RANK	28%				RANK	47%			RANK	30%		



Bull calf due 3/13/2024 sired by KJL/CLZB KIRKLAND 8003E LSF SRR BLANK CHECK 0162H, LSF SRR MADDUX 0164H, ALC MR COMPLETE H41, PIE JUST RIGHT 005, or PIE ASSET 1276. DNA testing will be necessary to determine sire.

64

BIEBER PRIMROSE 147D

BORN: 1/22/2016 REG: 3536601 100% AR 1A

BIEBER ROUSE SAMURAI X22

BIEBER SPARTACUS A193

BIEBER TILLY 233U

BIEBER HARD DRIVEY120

BIEBER PRIMROSE 470B

Cow ID: 147D BASIN PRIMROSE 24T9 EPD Data Generated 9/28/2023

	CED	BW	WW	YW	MILK	ME	HPG	CEM	STAY	MARB	REA	FAT
EPD	16	-5.5	62	90	24	14	13	9	16	0.62	0.16	0.03
Rank	13%	4%	39%	59%	61%	96%	26%	15%	56%	10%	31%	75%
HERDBUILDER	40				GRIDMASTER	34			PROS	74		
RANK	80%				RANK	42%			RANK	72%		



Bull calf due 2/24/2024 sired by BIEBER JUMPSTART J137.

65

BIEBER ROSE 111D

BORN: 1/16/2016 REG: 3536402 100% AR 1A

ANDRAS FUSION R236

BIEBER FEDERATION B544

BASIN PRIMROSE 0T43

PARINGA IRON ORE E27

BIEBER ROSE 116B

Cow ID: 111D BIEBER ROSE 198Z EPD Data Generated 9/28/2023

	CED	BW	WW	YW	MILK	ME	HPG	CEM	STAY	MARB	REA	FAT
EPD	16	-2.3	50	86	20	18	9	9	14	0.55	0.14	0.02
Rank	9%	37%	81%	67%	84%	98%	89%	12%	75%	17%	35%	48%
HERDBUILDER	13				GRIDMASTER	56			PROS	69		
RANK	97%				RANK	10%			RANK	79%		



Calf due 2/21/2024 sired by BIEBER CL ENERGIZE F121.

66

BIEBER PRIMROSE 184J

BORN: 2/16/2021 REG: 4463859 100% AR II

WFL MERLIN 018A

WFL PROFITMAKER E7030

WFL PROSPECT

BIEBER IN THE BLACK D315

BIEBER PRIMROSE 402F

Cow ID: 184J BIEBER PRIMROSE 454B EPD Data Generated 9/28/2023

	CED	BW	WW	YW	MILK	ME	HPG	CEM	STAY	MARB	REA	FAT
EPD	12	-1.4	80	124	33	-13	10	8	13	1.04	0.34	0.04
Rank	53%	54%	2%	4%	7%	3%	78%	27%	84%	1%	9%	90%
HERDBUILDER	67				GRIDMASTER	69			PROS	136		
RANK	34%				RANK	3%			RANK	4%		



Heifer calf due 3/29/2024 sired by HXC BLUE COLLAR 8820F This cow is black.



# BRED COWS



67

**BIEBER DURHEIM 221J**

BORN: 2/23/2021

REG: 4463969

100% AR 1A

BIEBER ROLLIN DEEP Y118

**BIEBER LET'S ROLL B563**

BASIN PRIMROSE 2043

BIEBER GLADIATOR C386

**BIEBER MONA 249E**

Cow ID: 221J

BIEBER MONA 472B

EPD Data Generated 9/28/2023

	CED	BW	WW	YW	MILK	ME	HPG	CEM	STAY	MARB	REA	FAT
EPD	17	-6.9	62	99	28	-1	14	10	16	0.65	0.49	0.04
Rank	6%	1%	38%	37%	30%	30%	13%	4%	56%	8%	3%	88%
	HERDBUILDER	78		GRID/MASTER	61		PROS	139				
	RANK	18%		RANK	7%		RANK	3%				



Heifer calf due 3/18/2024 sired by HXC BLUE COLLAR 8820F

68

**BIEBER TILLY 109J**

BORN: 1/15/2021

REG: 4463565

100% AR II

PIE STOCKMAN 4051

**BIEBER CL STOCKMARKET E119**

BIEBER CLADELLE 475C

BIEBER SPARTACUS A193

**BIEBER TILLY 580G**

Cow ID: 109J

BIEBER TILLY 399W

EPD Data Generated 9/28/2023

	CED	BW	WW	YW	MILK	ME	HPG	CEM	STAY	MARB	REA	FAT
EPD	19	-6.7	65	106	23	6	13	12	13	0.89	0.33	0.07
Rank	2%	1%	27%	24%	67%	68%	32%	1%	85%	1%	10%	99%
	HERDBUILDER	52		GRID/MASTER	48		PROS	100				
	RANK	60%		RANK	19%		RANK	34%				



Bull calf due 3/20/2024 sired by HXC BLUE COLLAR 8820F

This cow is black.

69

**BIEBER TILLY 263J**

BORN: 3/3/2021

REG: 4464117

100% AR II

ANDRAS FUSION R236

**BIEBER CL ATOMIC C218**

BIEBER DATELINE 308Y

BIEBER SPARTACUS A193

**BIEBER TILLY 177D**

Cow ID: 263J

BIEBER TILLY 187B

EPD Data Generated 9/28/2023

	CED	BW	WW	YW	MILK	ME	HPG	CEM	STAY	MARB	REA	FAT
EPD	16	-3.0	74	115	29	13	15	11	14	0.63	-0.03	0.04
Rank	10%	26%	7%	11%	25%	94%	13%	2%	73%	9%	72%	91%
	HERDBUILDER	58		GRID/MASTER	36		PROS	94				
	RANK	49%		RANK	40%		RANK	43%				



Heifer calf due 3/27/2024 sired by HXC BLUE COLLAR 8820F

This cow is black.

70

**BIEBER TILLY 126J**

BORN: 1/19/2021

REG: 4463639

100% AR II

WFL MERLIN 018A

**WFL PROFITMAKER E7030**

WFL PROSPECT

BOW CRK HEAVILY ARMED 310A

**BIEBER TILLY 384G**

Cow ID: 126J

BIEBER TILLY 177D

EPD Data Generated 9/28/2023

	CED	BW	WW	YW	MILK	ME	HPG	CEM	STAY	MARB	REA	FAT
EPD	18	-5.8	66	96	33	2	9	11	15	0.45	-0.14	0.03
Rank	3%	3%	25%	44%	7%	45%	84%	3%	60%	34%	90%	80%
	HERDBUILDER	60		GRID/MASTER	15		PROS	75				
	RANK	45%		RANK	81%		RANK	71%				



Heifer calf due 3/20/2024 sired by HXC BLUE COLLAR 8820F

This cow is black.

Supplement Sheets

SUPPLEMENT SHEETS WILL BE AVAILABLE ON OUR WEBSITE AND ON SALE DAY. THIS WILL INCLUDE:

- DUE DATE, CALF SEX, AND MATE ON SUMMER COWS
- BULL SCROTALS AND WEIGHTS
- CATALOG CORRECTIONS



# BRED COWS

71

BIEBER DURHEIM 303J

BORN: 3/12/2021

REG: 4464297

99.6% AR 0.4% XX 1B

BIEBER HARD DRIVE Y120

BIEBER HARD DRIVE E640

BIEBER LASS 241Y

BIEBER LB MITIGATOR C314

BIEBER DURHEIM 360F

Cow ID: 303J

BIEBER DURHEIM 232A

EPD Data Generated 9/28/2023

	CED	BW	WW	YW	MILK	ME	HPG	CEM	STAY	MARB	REA	FAT
EPD	11	-1.9	68	104	24	6	15	8	13	0.40	0.17	0.01
Rank	70%	44%	17%	28%	61%	69%	12%	24%	86%	44%	29%	44%
HERDBUILDER	49				GRID/MASTER	17		PROS	67			
RANK	65%				RANK	76%		RANK	81%			



Calf due 3/3/2024 sired by HXC BLUE COLLAR 8820F

72

BIEBER DURHEIM 386J

BORN: 5/17/2021

REG: 4497693

98.4% AR 1.6% XX II

CRUMP FORERUNNER 6601

STRA FORERUNNER 838

STRA REBALAS 6106

BECKTON EPIC R397 K

BIEBER DURHEIM 444D

Cow ID: 386J

BD3P 168

EPD Data Generated 9/28/2023

	CED	BW	WW	YW	MILK	ME	HPG	CEM	STAY	MARB	REA	FAT
EPD	4	1.5	65	104	25	15	14	4	15	0.32	-0.01	0.04
Rank	99%	93%	25%	27%	51%	96%	18%	92%	68%	64%	68%	86%
HERDBUILDER	32				GRID/MASTER	33		PROS	65			
RANK	88%				RANK	44%		RANK	83%			



Heifer calf due 3/3/2024 sired by HXC BLUE COLLAR 8820F This cow has ineligible white making her a Category II.

73

BIEBER DURHEIM 350J

BORN: 5/10/2021

REG: 4497559

99.2% AR 0.8% XX II

BIEBER CLATOMIC C218

BIEBER DCWARHEAD F120

BIEBER SURPRISE 243D

LOOSLI RIGHT ON 423

BIEBER DURHEIM 111E

Cow ID: 350J

BIEBER DURHEIM 293C

EPD Data Generated 9/28/2023

	CED	BW	WW	YW	MILK	ME	HPG	CEM	STAY	MARB	REA	FAT
EPD	14	-3.1	70	119	33	14	9	7	14	0.14	0.27	0.03
Rank	31%	24%	13%	7%	8%	96%	87%	39%	74%	96%	15%	71%
HERDBUILDER	31				GRID/MASTER	18		PROS	49			
RANK	89%				RANK	76%		RANK	94%			



Heifer calf due 3/8/2024 sired by HXC BLUE COLLAR 8820F This cow has ineligible white making her a Category II.





# BRED COWS

74

**BIEBER CL ET MISS 402D**

BORN: 3/30/2016

REG: 3537423

100% AR 1A

BIEBER ROOSEVELT W384

**BIEBER ROLLIN DEEP Y118**

BIEBER TILLY 399W

VGW OLY 903

**BIEBER ET MISS 130Z**

Cow ID: 402D

BIEBER ET MISS 270X

EPD Data Generated 9/28/2023

	CED	BW	WW	YW	MILK	ME	HPG	CEM	STAY	MARB	REA	FAT
EPD	7	1.0	73	122	30	5	13	6	20	0.47	0.22	0.03
Rank	95%	90%	8%	5%	17%	64%	25%	64%	13%	30%	21%	78%
	HERDBUILDER	76		GRIDMASTER	35		PROS	112				
	RANK	20%		RANK	40%		RANK	19%				



*Bred AI to LARR PAYCHECK 0728, and natural to KJL/CLZB KIRKLAND 8003E, HXC BLUE COLLAR 8820E, PIE FRANCHISE 9031, LSF SRR BLANK CHECK 0162H, ALC MR COMPLETE H41, or PIE JUST RIGHT 005. Lot 74 has been one of my favorite Rollin Deep daughters of all time. She is powerful, has weaned five calves at a 109 average WW ratio, and has a MPPA of 107.*

75

**BIEBER PRIMROSE 242D**

BORN: 2/13/2016

REG: 3536721

100% AR 1A

BIEBER ROOSEVELT W384

**BIEBER ROLLIN DEEP Y118**

BIEBER TILLY 399W

PARINGA IRON ORE E27

**BIEBER PRIMROSE 151A**

Cow ID: 242D

BASIN PRIMROSE 0T43

EPD Data Generated 9/28/2023

	CED	BW	WW	YW	MILK	ME	HPG	CEM	STAY	MARB	REA	FAT
EPD	13	-2.0	63	99	29	3	19	8	17	0.51	0.28	0.06
Rank	39%	42%	32%	37%	26%	51%	1%	25%	37%	23%	14%	98%
	HERDBUILDER	86		GRIDMASTER	41		PROS	127				
	RANK	10%		RANK	29%		RANK	7%				



*Bred AI to LARR PAYCHECK 0728, and natural to KJL/CLZB KIRKLAND 8003E, HXC BLUE COLLAR 8820E, PIE FRANCHISE 9031, LSF SRR BLANK CHECK 0162H, ALC MR COMPLETE H41, or PIE JUST RIGHT 005. Lot 75 stacks some of the best pedigrees in our herd and has been in our donor program. She has a MPPA of 107.*

76

**BIEBER DURHEIM 185D**

BORN: 2/6/2016

REG: 3536565

87.1% AR 11.7% SM 1.2% XX 1B

ANDRAS FUSION R236

**MLK CRK UNIFIED 4207**

MLK CRK LAKOTA 953

RHRA GOLD RUSH 402 17T

**BIEBER DURHEIM420B**

Cow ID: 185D

BD3P DURHEIM 36

EPD Data Generated 9/28/2023

	CED	BW	WW	YW	MILK	ME	HPG	CEM	STAY	MARB	REA	FAT
EPD	10	-0.4	66	104	36	1	13	7	18	0.50	0.57	-0.01
Rank	81%	72%	23%	27%	2%	40%	26%	56%	30%	25%	2%	4%
	HERDBUILDER	69		GRIDMASTER	44		PROS	113				
	RANK	31%		RANK	24%		RANK	17%				



*Bred AI to LARR PAYCHECK 0728, and natural to KJL/CLZB KIRKLAND 8003E, HXC BLUE COLLAR 8820E, PIE FRANCHISE 9031, LSF SRR BLANK CHECK 0162H, ALC MR COMPLETE H41, or PIE JUST RIGHT 005.*



# BRED COWS

## Breeding Data

LOTS 74 THROUGH 102 ARE MAY-JUNE CALVING COWS THAT WERE NOT PREGNANCY ULTRASOUNDED UNTIL AFTER PRINT. WE HAVE INCLUDED BREEDING DATA ON EACH LOT AND WILL PROVIDE DUE DATES VIA SUPPLEMENT SHEET PRIOR TO THE SALE. ANY OF THESE LOTS THAT ARE OPEN WILL BE SCRATCHED PRIOR TO THE SALE.

### 78 BIEBER ROSE 627D

BORN: 4/10/2016 REG: 3537250 100% AR 1A

LACY GOLD BAR 8123

BIEBER HARD DRIVE Y120

BIEBER LAURA 158W

BIEBER ROMERO 9136

BIEBER ROSE 246U

Cow ID: 627D BIEBER ROSE 7933 EPD Data Generated 9/28/2023

	CED	BW	WW	YW	MILK	ME	HPG	CEM	STAY	MARB	REA	FAT
EPD	13	0.5	75	118	26	12	16	7	16	0.30	0.45	-0.03
Rank	34%	85%	6%	8%	42%	92%	5%	39%	50%	69%	4%	1%
	HERDBUILDER	58		GRIDMASTER	25		PROS	83				
	RANK	49%		RANK	62%		RANK	60%				



Bred AI to BIEBER CHECKMATE K126, and natural to KJL/CLZB KIRKLAND 8003E, HXC BLUE COLLAR 8820E, PIE FRANCHISE 9031, LSF SRR BLANK CHECK 0162H, ALC MR COMPLETE H41, or PIE JUST RIGHT 005.

### 77 BIEBER LASS 221D

BORN: 2/12/2016 REG: 3536892 100% AR 1A

LACY GOLD BAR 8123

BIEBER HARD DRIVE Y120

BIEBER LAURA 158W

LSF CYCLONE 9934W

BIEBER LASS 360A

Cow ID: 221D BIEBER LASS 330X EPD Data Generated 9/28/2023

	CED	BW	WW	YW	MILK	ME	HPG	CEM	STAY	MARB	REA	FAT
EPD	11	-0.5	78	121	26	11	15	5	16	0.37	0.20	0
Rank	68%	70%	3%	6%	47%	89%	9%	78%	46%	52%	24%	24%
	HERDBUILDER	63		GRIDMASTER	31		PROS	94				
	RANK	41%		RANK	48%		RANK	42%				



Bred AI to BIEBER CHECKMATE K126, and natural to KJL/CLZB KIRKLAND 8003E, HXC BLUE COLLAR 8820E, PIE FRANCHISE 9031, LSF SRR BLANK CHECK 0162H, ALC MR COMPLETE H41, or PIE JUST RIGHT 005.

### 79 BIEBER ROSE 234D

BORN: 2/12/2016 REG: 3536570 100% AR 1A

HXC CONQUEST 4405P

LSF SRR TRIUMPH 3100A

LSF PINE MARIE S004Y1137

BIEBER H HUGHES W109

BIEBER ROSE 434B

Cow ID: 234D BASIN ROSE P090 EPD Data Generated 9/28/2023

	CED	BW	WW	YW	MILK	ME	HPG	CEM	STAY	MARB	REA	FAT
EPD	8	2.0	68	104	33	20	10	6	15	0.71	0.10	-0.01
Rank	91%	96%	17%	27%	8%	99%	76%	73%	66%	5%	43%	4%
	HERDBUILDER	25		GRIDMASTER	59		PROS	84				
	RANK	93%		RANK	8%		RANK	58%				



Bred AI to LARR PAYCHECK 0728, and natural to KJL/CLZB KIRKLAND 8003E, HXC BLUE COLLAR 8820E, PIE FRANCHISE 9031, LSF SRR BLANK CHECK 0162H, ALC MR COMPLETE H41, or PIE JUST RIGHT 005.





# BRED COWS

80

BIEBER GALLEE 550D

BORN: 3/12/2016 REG: 3537085 100% AR 1A

BASIN HOBO 0545

BIEBER H HUGHES W109

BASIN ROSE 06T0

BROWN VACATION H7106

BIEBER GALLEE 291X

Cow ID: 550D BIEBER GALEE 9513 EPD Data Generated 9/28/2023

	CED	BW	WW	YW	MILK	ME	HPG	CEM	STAY	MARB	REA	FAT
EPD	9	1.7	79	123	25	22	13	9	17	0.24	0.28	0.02
Rank	87%	94%	2%	5%	55%	99%	23%	19%	44%	83%	14%	65%
HERDBUILDER	48											
RANK	68%											
GRIDMASTER	29											
RANK	54%											
PROS	77											
RANK	69%											



Bred AI to LARR PAYCHECK 0728, and natural to KJL/CLZB KIRKLAND 8003E, HXC BLUE COLLAR 8820E, PIE FRANCHISE 9031, LSF SRR BLANK CHECK 0162H, ALC MR COMPLETE H41, or PIE JUST RIGHT 005.

82

BIEBER PRIMROSE 125D

BORN: 1/18/2016 REG: 3536612 100% AR 1A

LACY GOLD BAR 8123

BIEBER HARD DRIVE Y120

BIEBER LAURA 158W

BIEBER ROLLIN DEEP Y118

BIEBER PRIMROSE 482B

Cow ID: 125D BASIN PRIMROSE 70T9 EPD Data Generated 9/28/2023

	CED	BW	WW	YW	MILK	ME	HPG	CEM	STAY	MARB	REA	FAT
EPD	13	0.9	77	119	27	9	15	9	16	0.48	0.42	0
Rank	35%	89%	4%	7%	36%	82%	11%	19%	53%	28%	5%	24%
HERDBUILDER	58											
RANK	50%											
GRIDMASTER	43											
RANK	27%											
PROS	100											
RANK	33%											



Bred AI to BIEBER JUMPSTART J137, and natural to KJL/CLZB KIRKLAND 8003E, HXC BLUE COLLAR 8820E, PIE FRANCHISE 9031, LSF SRR BLANK CHECK 0162H, ALC MR COMPLETE H41, or PIE JUST RIGHT 005.

81

BIEBER TORYANNA 394D

BORN: 3/25/2016 REG: 3536709 100% AR 1A

ANDRAS FUSION R236

BIEBER FEDERATION B544

BASIN PRIMROSE 0T43

GMRA MAKE IT EASY 8226

BIEBER TORYANNA 139X

Cow ID: 394D BIEBER TORYANNA 111T EPD Data Generated 9/28/2023

	CED	BW	WW	YW	MILK	ME	HPG	CEM	STAY	MARB	REA	FAT
EPD	8	-0.6	56	83	33	1	11	6	11	0.93	-0.15	0.02
Rank	93%	69%	63%	72%	7%	40%	52%	68%	93%	1%	91%	51%
HERDBUILDER	25											
RANK	93%											
GRIDMASTER	48											
RANK	19%											
PROS	73											
RANK	74%											



Bred AI to LSF SRR EXACTLY 1144J, and natural to KJL/CLZB KIRKLAND 8003E, HXC BLUE COLLAR 8820E, PIE FRANCHISE 9031, LSF SRR BLANK CHECK 0162H, ALC MR COMPLETE H41, or PIE JUST RIGHT 005.

83

BIEBER TILLY 395D

BORN: 3/25/2016 REG: 3536743 100% AR 1A

BIEBER ROLLIN DEEP Y118

BIEBER DEEP END B597

BIEBER LAURA 158W

BECKTON EPIC R397 K

BIEBER TILLY 171A

Cow ID: 395D BIEBER TILLY 139S EPD Data Generated 9/28/2023

	CED	BW	WW	YW	MILK	ME	HPG	CEM	STAY	MARB	REA	FAT
EPD	12	-0.7	66	116	28	6	14	8	18	0.47	0.44	0.02
Rank	58%	67%	23%	10%	29%	69%	14%	22%	31%	30%	4%	65%
HERDBUILDER	73											
RANK	24%											
GRIDMASTER	55											
RANK	11%											
PROS	128											
RANK	7%											



Bred AI to BIEBER JUMPSTART J137, and natural to KJL/CLZB KIRKLAND 8003E, HXC BLUE COLLAR 8820E, PIE FRANCHISE 9031, LSF SRR BLANK CHECK 0162H, ALC MR COMPLETE H41, or PIE JUST RIGHT 005.



# BRED COWS

## Breeding Data

LOTS 74 THROUGH 102 ARE MAY-JUNE CALVING COWS THAT WERE NOT PREGNANCY ULTRASOUNDED UNTIL AFTER PRINT. WE HAVE INCLUDED BREEDING DATA ON EACH LOT AND WILL PROVIDE DUE DATES VIA SUPPLEMENT SHEET PRIOR TO THE SALE. ANY OF THESE LOTS THAT ARE OPEN WILL BE SCRATCHED PRIOR TO THE SALE.

### 85 BIEBER SHEBA 297D

BORN: 2/17/2016 REG: 3536676 100% AR 1A

BIEBER ROOSEVELT W384

BIEBER ROLLIN DEEP Y118

BIEBER TILLY 399W

BIEBER REAL MCCOY Y124

BIEBER SHEBA 114A

Cow ID: 297D BIEBER SHEBA 147Y EPD Data Generated 9/28/2023

	CED	BW	WW	YW	MILK	ME	HPG	CEM	STAY	MARB	REA	FAT
EPD	11	0.8	69	103	26	0	14	7	17	0.61	0.35	0.04
Rank	73%	88%	15%	29%	43%	30%	13%	47%	44%	11%	9%	89%
	HERDBUILDER	78	GRIDMASTER	40	PROS	118						
	RANK	18%	RANK	31%	RANK	13%						



Bred AI to BIEBER JUMPSTART J137, and natural to KJL/CLZB KIRKLAND 8003E, HXC BLUE COLLAR 8820E, PIE FRANCHISE 9031, LSF SRR BLANK CHECK 0162H, ALC MR COMPLETE H41, or PIE JUST RIGHT 005.

### 87 BIEBER TILLY 159D

BORN: 1/23/2016 REG: 3536543 100% AR 1A

BIEBER ROUSE SAMURAI X22

BIEBER SPARTACUS A193

BIEBER TILLY 233U

ANDRAS FUSION R236

BIEBER TILLY 372B

Cow ID: 159D BIEBER TILLY 305U EPD Data Generated 9/28/2023

	CED	BW	WW	YW	MILK	ME	HPG	CEM	STAY	MARB	REA	FAT
EPD	14	-2.2	58	99	25	4	10	9	15	0.70	-0.21	0.03
Rank	26%	39%	52%	38%	50%	58%	68%	14%	66%	5%	95%	78%
	HERDBUILDER	54	GRIDMASTER	63	PROS	117						
	RANK	58%	RANK	6%	RANK	14%						



Bred AI to BIEBER JUMPSTART J137, and natural to KJL/CLZB KIRKLAND 8003E, HXC BLUE COLLAR 8820E, PIE FRANCHISE 9031, LSF SRR BLANK CHECK 0162H, ALC MR COMPLETE H41, or PIE JUST RIGHT 005.

### 84 BIEBER SAM 293D

BORN: 2/16/2016 REG: 3536746 100% AR 1A

LACY GOLD BAR 8123

BIEBER HARD DRIVE Y120

BIEBER LAURA 158W

BIEBER ROUSE SAMURAI X22

BIEBER SAM 172A

Cow ID: 293D BASIN SAM 26S1 EPD Data Generated 9/28/2023

	CED	BW	WW	YW	MILK	ME	HPG	CEM	STAY	MARB	REA	FAT
EPD	13	-2.4	72	122	27	14	13	7	15	0.95	0.27	0.02
Rank	35%	35%	10%	5%	39%	95%	25%	41%	65%	1%	15%	51%
	HERDBUILDER	39	GRIDMASTER	81	PROS	120						
	RANK	80%	RANK	1%	RANK	12%						



Bred AI to BIEBER CHECKMATE K126, and natural to KJL/CLZB KIRKLAND 8003E, HXC BLUE COLLAR 8820E, PIE FRANCHISE 9031, LSF SRR BLANK CHECK 0162H, ALC MR COMPLETE H41, or PIE JUST RIGHT 005.

### 86 BIEBER DURHEIM 444D

BORN: 5/7/2016 REG: 3539977 96.9% AR 3.1% XX II

BECKTON EPIC K F075

BECKTON EPIC R397 K

BECKTON KIT F468 JL

LORENZEN HIGH PRAIRIE 2356

BD3P 168

Cow ID: 444D 33KBD3P EPD Data Generated 9/28/2023

	CED	BW	WW	YW	MILK	ME	HPG	CEM	STAY	MARB	REA	FAT
EPD	9	-0.6	61	102	23	-1	14	7	17	0.55	0.11	0.05
Rank	85%	69%	41%	31%	68%	27%	17%	56%	44%	17%	41%	97%
	HERDBUILDER	68	GRIDMASTER	53	PROS	121						
	RANK	32%	RANK	13%	RANK	11%						



Bred AI to LARR PAYCHECK 0728, and natural to KJL/CLZB KIRKLAND 8003E, HXC BLUE COLLAR 8820E, PIE FRANCHISE 9031, LSF SRR BLANK CHECK 0162H, ALC MR COMPLETE H41, or PIE JUST RIGHT 005. This cow has ineligible white making her a Category II.

### 88 BIEBER TORYANNA 299D

BORN: 2/18/2016 REG: 3536877 100% AR 1A

BECKTON EPIC K F075

BECKTON EPIC R397 K

BECKTON KIT F468 JL

A-1 HAY MAKER 511V

BIEBER TORYANNA 328Y

Cow ID: 299D BIEBER TORYANNA 344W EPD Data Generated 9/28/2023

	CED	BW	WW	YW	MILK	ME	HPG	CEM	STAY	MARB	REA	FAT
EPD	7	-0.1	61	97	25	-3	13	2	20	0.28	0.41	0.01
Rank	96%	77%	40%	42%	56%	20%	23%	98%	12%	74%	6%	46%
	HERDBUILDER	75	GRIDMASTER	36	PROS	112						
	RANK	21%	RANK	38%	RANK	19%						



Bred AI to LSF SRR EXACTLY 1144J, and natural to KJL/CLZB KIRKLAND 8003E, HXC BLUE COLLAR 8820E, PIE FRANCHISE 9031, LSF SRR BLANK CHECK 0162H, ALC MR COMPLETE H41, or PIE JUST RIGHT 005.



# BRED COWS

89

BIEBER PRIMROSE 274D

BORN: 2/15/2016 REG: 3536492 100% AR 1A

LACY GOLD BAR 8123

BIEBER HARD DRIVE Y120

BIEBER LAURA 158W

BIEBER MAKIN HAY 9913

BIEBER PRIMROSE 266X

Cow ID: 274D BASIN PRIMROSE 0T43 EPD Data Generated 9/28/2023

	CED	BW	WW	YW	MILK	ME	HPG	CEM	STAY	MARB	REA	FAT
EPD	21	-4.1	73	109	29	6	11	11	15	0.55	0.28	0
Rank	1%	12%	8%	18%	24%	68%	57%	1%	65%	17%	14%	20%
HERDBUILDER	61											
RANK	44%											
GRID/MASTER	51											
RANK	15%											
PROS	113											
RANK	18%											



Bred AI to BIEBER JUMPSTART J137, and natural to KJL/CLZB KIRKLAND 8003E, HXC BLUE COLLAR 8820E, PIE FRANCHISE 9031, LSF SRR BLANK CHECK 0162H, ALC MR COMPLETE H41, or PIE JUST RIGHT 005.

91

BIEBER MINOLA 148D

BORN: 1/22/2016 REG: 3536487 100% AR 1A

BIEBER ROUSE SAMURAI X22

BIEBER SPARTACUS A193

BIEBER TILLY 233U

PARINGA IRON ORE E27

BIEBER MINOLA 259B

Cow ID: 148D BIEBER MINOLA 231W EPD Data Generated 9/28/2023

	CED	BW	WW	YW	MILK	ME	HPG	CEM	STAY	MARB	REA	FAT
EPD	15	-3.6	60	93	27	-5	11	8	13	0.78	0.11	0.02
Rank	16%	18%	46%	52%	38%	14%	52%	29%	84%	2%	41%	65%
HERDBUILDER	52											
RANK	61%											
GRID/MASTER	54											
RANK	12%											
PROS	106											
RANK	25%											



Bred AI to LARR PAYCHECK 0728, and natural to KJL/CLZB KIRKLAND 8003E, HXC BLUE COLLAR 8820E, PIE FRANCHISE 9031, LSF SRR BLANK CHECK 0162H, ALC MR COMPLETE H41, or PIE JUST RIGHT 005.

93

BIEBER ANKONY FLORA 223D

BORN: 2/12/2016 REG: 3536769 100% AR 1A

BECKTON EPIC K F075

BECKTON EPIC R397 K

BECKTON KIT F468 JL

BIEBER OUTRIDER W388

BIEBER ANKONY FLORA 193Z

Cow ID: 223D BIEBER ANKONY FLORA 225W EPD Data Generated 9/28/2023

	CED	BW	WW	YW	MILK	ME	HPG	CEM	STAY	MARB	REA	FAT
EPD	11	-0.8	59	94	26	7	14	7	18	0.41	0.17	0.04
Rank	64%	65%	49%	48%	46%	76%	15%	49%	26%	42%	29%	91%
HERDBUILDER	68											
RANK	33%											
GRID/MASTER	35											
RANK	40%											
PROS	103											
RANK	29%											



Bred AI to BIEBER JUMPSTART J137, and natural to KJL/CLZB KIRKLAND 8003E, HXC BLUE COLLAR 8820E, PIE FRANCHISE 9031, LSF SRR BLANK CHECK 0162H, ALC MR COMPLETE H41, or PIE JUST RIGHT 005.

90

BIEBER GOLDIE 290D

BORN: 2/16/2016 REG: 3536923 100% AR II

LACY GOLD BAR 8123

BIEBER HARD DRIVE Y120

BIEBER LAURA 158W

LCOC HIGH NOON A093R

BIEBER GOLDIE 421Z

Cow ID: 290D BIEBER GOLDIE 146S EPD Data Generated 9/28/2023

	CED	BW	WW	YW	MILK	ME	HPG	CEM	STAY	MARB	REA	FAT
EPD	10	1.2	77	124	26	13	15	5	15	0.83	0.35	-0.03
Rank	79%	91%	4%	4%	48%	93%	9%	82%	64%	1%	9%	1%
HERDBUILDER	40											
RANK	79%											
GRID/MASTER	69											
RANK	3%											
PROS	109											
RANK	22%											



Bred AI to BIEBER JUMPSTART J137, and natural to KJL/CLZB KIRKLAND 8003E, HXC BLUE COLLAR 8820E, PIE FRANCHISE 9031, LSF SRR BLANK CHECK 0162H, ALC MR COMPLETE H41, or PIE JUST RIGHT 005. This cow has ineligible white making her a Category II.

92

BIEBER TILLY 525D

BORN: 3/24/2016 REG: 3537046 100% AR 1A

HXC CONQUEST 4405P

LSFTAKEOVER 9943W

LSFWIDELOAD R5014 U8061

BIEBER ROUGH RIDER 10712

BIEBER TILLY 362W

Cow ID: 525D BIEBER TILLY 119T EPD Data Generated 9/28/2023

	CED	BW	WW	YW	MILK	ME	HPG	CEM	STAY	MARB	REA	FAT
EPD	17	-4.9	43	68	30	-14	17	7	14	0.67	0.15	0.05
Rank	4%	6%	93%	92%	18%	3%	3%	49%	76%	7%	33%	97%
HERDBUILDER	69											
RANK	31%											
GRID/MASTER	39											
RANK	32%											
PROS	108											
RANK	23%											

Bred AI to BIEBER JUMPSTART J137, and natural to KJL/CLZB KIRKLAND 8003E, HXC BLUE COLLAR 8820E, PIE FRANCHISE 9031, LSF SRR BLANK CHECK 0162H, ALC MR COMPLETE H41, or PIE JUST RIGHT 005.

94

BIEBER PRIMROSE 142D

BORN: 1/22/2016 REG: 3536576 75% AR 23.4% SM 1.6% XX III

LACY GOLD BAR 8123

BIEBER HARD DRIVE Y120

BIEBER LAURA 158W

TRAXS RUSHMORE X103

BIEBER PRIMROSE 442B

Cow ID: 142D BASIN PRIMROSE 24T9 EPD Data Generated 9/28/2023

	CED	BW	WW	YW	MILK	ME	HPG	CEM	STAY	MARB	REA	FAT
EPD	17	-6.1	56	82	22	-6	17	9	13	0.59	0.31	-0.05
Rank	4%	2%	63%	75%	77%	13%	2%	13%	86%	13%	12%	1%
HERDBUILDER	67											
RANK	35%											
GRID/MASTER	29											
RANK	53%											
PROS	96											
RANK	40%											



Bred AI to LSF SRR EXACTLY 1144J, and natural to KJL/CLZB KIRKLAND 8003E, HXC BLUE COLLAR 8820E, PIE FRANCHISE 9031, LSF SRR BLANK CHECK 0162H, ALC MR COMPLETE H41, or PIE JUST RIGHT 005.



# BRED COWS

95

BIEBER ROSE 632D

BORN: 3/12/2016

REG: 3537254

100% AR 1A

BIEBER ROUSE SAMURAI X22

BIEBER SPARTACUS A193

BIEBER TILLY 233U

LJC MISSION STATEMENT P27

BIEBER ROSE 153W

Cow ID: 632D

BASIN ROSE 6443

EPD Data Generated 9/28/2023

	CED	BW	WW	YW	MILK	ME	HPG	CEM	STAY	MARB	REA	FAT
EPD	12	-3.0	65	101	25	3	12	6	16	0.81	0.06	0.05
Rank	57%	26%	25%	34%	55%	47%	41%	75%	58%	2%	52%	94%
HERDBUILDER	51		GRIDMASTER	40		PROS	91					
RANK	62%		RANK	32%		RANK	47%					



Bred AI to BIEBER CHECKMATE K126, and natural to KJL/CLZB KIRKLAND 8003F, HXC BLUE COLLAR 8820F, PIE FRANCHISE 9031, LSF SRR BLANK CHECK 0162H, ALC MR COMPLETE H41, or PIE JUST RIGHT 005.

97

BIEBER LAURA 173D

BORN: 1/26/2016

REG: 3536429

100% AR 1A

ANDRAS FUSION R236

BIEBER FEDERATION B544

BASIN PRIMROSE 0T43

SCHULER ENDURANCE 2101Z

BIEBER LAURA 151B

Cow ID: 173D

BIEBER LAURA 452Z

EPD Data Generated 9/28/2023

	CED	BW	WW	YW	MILK	ME	HPG	CEM	STAY	MARB	REA	FAT
EPD	11	-1.5	55	84	29	5	15	9	13	0.51	-0.18	0
Rank	68%	52%	63%	70%	22%	59%	11%	13%	81%	23%	93%	11%
HERDBUILDER	51		GRIDMASTER	39		PROS	91					
RANK	62%		RANK	32%		RANK	48%					



Bred AI to BIEBER CHECKMATE K126, and natural to KJL/CLZB KIRKLAND 8003F, HXC BLUE COLLAR 8820F, PIE FRANCHISE 9031, LSF SRR BLANK CHECK 0162H, ALC MR COMPLETE H41, or PIE JUST RIGHT 005.

96

BIEBER SUE 477D

BORN: 5/9/2016

REG: 3540014

100% AR 1A

BIEBER ROOSEVELT W384

BIEBER ROLLIN DEEP Y118

BIEBER TILLY 399W

BIEBER ROUSE SAMURAI X22

BIEBER SUE 240A

Cow ID: 477D

BIEBER SUE 221T

EPD Data Generated 9/28/2023

	CED	BW	WW	YW	MILK	ME	HPG	CEM	STAY	MARB	REA	FAT
EPD	12	-0.4	70	113	30	10	14	10	13	0.54	-0.02	0.07
Rank	56%	72%	12%	13%	17%	87%	19%	7%	84%	19%	70%	99%
HERDBUILDER	49		GRIDMASTER	38		PROS	87					
RANK	67%		RANK	34%		RANK	53%					



Bred natural to KJL/CLZB KIRKLAND 8003F, HXC BLUE COLLAR 8820F, PIE FRANCHISE 9031, LSF SRR BLANK CHECK 0162H, ALC MR COMPLETE H41, or PIE JUST RIGHT 005.

98

BIEBER ROSE 485D

BORN: 5/26/2016

REG: 3540087

100% AR 1A

BUF CRK THE RIGHT KIND U199

LOOSLI RIGHT ON 423

SRR DORY JIBA 0155-5036

BECKTON EPIC R397 K

BIEBER ROSE 435B

Cow ID: 485D

BASIN ROSE 710P

EPD Data Generated 9/28/2023

	CED	BW	WW	YW	MILK	ME	HPG	CEM	STAY	MARB	REA	FAT
EPD	11	-3.0	68	112	30	15	11	8	8	0.40	0.06	0.03
Rank	61%	26%	18%	14%	19%	96%	59%	35%	98%	44%	52%	84%
HERDBUILDER	-1		GRIDMASTER	46		PROS	45					
RANK	99%		RANK	21%		RANK	95%					



Bred AI to BIEBER JUMPSTART J137, and natural to KJL/CLZB KIRKLAND 8003F, HXC BLUE COLLAR 8820F, PIE FRANCHISE 9031, LSF SRR BLANK CHECK 0162H, ALC MR COMPLETE H41, or PIE JUST RIGHT 005.





# BRED COWS

99

**BIEBER ADELLE 440D**

BORN: 5/7/2016 REG: 3540088 100% AR 1A

BIEBER ROOSEVELT W384

**BIEBER ROLLIN DEEP Y118**

BIEBER TILLY 399W

LSF JBOB EXPECTATION 6034S

**BIEBER ADELLE 449Z**

Cow ID: 440D BIEBER ADELLE 8958 EPD Data Generated 9/28/2023

	CED	BW	WW	YW	MILK	ME	HPG	CEM	STAY	MARB	REA	FAT
EPD	10	-1.7	60	89	24	15	17	10	19	0.26	0.28	0.04
Rank	75%	48%	47%	61%	59%	96%	4%	8%	22%	78%	14%	86%
	HERDBUILDER	70		GRID/MASTER	15		PROS	85				
	RANK	28%		RANK	81%		RANK	56%				



Bred AI to LSF SRR EXACTLY 1144J, and natural to KJL/CLZB KIRKLAND 8003E, HXC BLUE COLLAR 8820E, PIE FRANCHISE 9031, LSF SRR BLANK CHECK 0162H, ALC MR COMPLETE H41, or PIE JUST RIGHT 005.

101

**BIEBER DURHEIM 337D**

BORN: 3/4/2016 REG: 3536882 96.9% AR 3.1% XX 1B

VGW OLY 903

**BIEBER TR A168**

BASIN ROSE 57U8

MESSMER JERICHO W041

**BIEBER DURHEIM 339A**

Cow ID: 337D BD3P DURHEIM 534 EPD Data Generated 9/28/2023

	CED	BW	WW	YW	MILK	ME	HPG	CEM	STAY	MARB	REA	FAT
EPD	3	1.5	63	97	24	3	15	1	12	0.09	0.12	0
Rank	99%	93%	33%	42%	64%	51%	9%	99%	88%	98%	39%	24%
	HERDBUILDER	15		GRID/MASTER	8		PROS	23				
	RANK	97%		RANK	90%		RANK	99%				



Bred AI to LSF SRR EXACTLY 1144J, and natural to KJL/CLZB KIRKLAND 8003E, HXC BLUE COLLAR 8820E, PIE FRANCHISE 9031, LSF SRR BLANK CHECK 0162H, ALC MR COMPLETE H41, or PIE JUST RIGHT 005.

100

**BIEBER SIERRA 433D**

BORN: 5/5/2016 REG: 3539974 100% AR 1A

BIEBER ROOSEVELT W384

**BIEBER ROLLIN DEEP Y118**

BIEBER TILLY 399W

MESSMER JERICHO W041

**BIEBER SIERRA 165Z**

Cow ID: 433D BIEBER SIERRA 131T EPD Data Generated 9/28/2023

	CED	BW	WW	YW	MILK	ME	HPG	CEM	STAY	MARB	REA	FAT
EPD	3	3.3	80	119	28	11	15	0	13	0.20	0.49	0.05
Rank	99%	99%	2%	7%	28%	89%	13%	99%	84%	89%	3%	96%
	HERDBUILDER	16		GRID/MASTER	3		PROS	19				
	RANK	97%		RANK	95%		RANK	99%				



Bred AI to LARR PAYCHECK 0728, and natural to KJL/CLZB KIRKLAND 8003E, HXC BLUE COLLAR 8820E, PIE FRANCHISE 9031, LSF SRR BLANK CHECK 0162H, ALC MR COMPLETE H41, or PIE JUST RIGHT 005.

102

**BIEBER JOAN 545D**

BORN: 3/30/2016 REG: 3537066 100% AR 1A

BIEBER ROOSEVELT W384

**BIEBER ROLLIN DEEP Y118**

BIEBER TILLY 399W

LCOC HIGH NOON A093R

**BIEBER JOAN 309Y**

Cow ID: 545D BIEBER JOAN 7502 EPD Data Generated 9/28/2023

	CED	BW	WW	YW	MILK	ME	HPG	CEM	STAY	MARB	REA	FAT
EPD	16	-3.9	62	90	29	2	14	10	21	0.52	0.03	0.06
Rank	11%	14%	38%	59%	26%	42%	14%	4%	7%	22%	59%	98%
	HERDBUILDER	109		GRID/MASTER	26		PROS	135				
	RANK	1%		RANK	60%		RANK	4%				



Bred natural to KJL/CLZB KIRKLAND 8003E, HXC BLUE COLLAR 8820E, PIE FRANCHISE 9031, LSF SRR BLANK CHECK 0162H, ALC MR COMPLETE H41, or PIE JUST RIGHT 005.





## AGE-ADVANTAGED BULLS

In my original quest to get out of farming I convinced my father Ron that if we calved a group of cows in May-June, we could offer age-advantaged bulls for those customers that wanted them. One of the major reasons we did this was because every year or two we would have a natural service sire that didn't do his job resulting in open or late cows. We didn't want to get rid of these cows but calving in April was tough because of the mud. We decided to breed them to start in May and have been calving cows at this time since 2002. This season syncs with our grazing cycle and augments our current Spring calving system. We have also found that producers in many areas of the country like these age-advantaged bulls for their operations. Because of that, we have added ET calves to the group to increase the volume and quality.

It is a natural impulse for us to throw up our hands in frustration when challenged to make sense of waves of new information. Many say, "I'm going to pick the cattle that look the part to me and to hell with all the numbers!" Besides, it seems easy for a lot of people in our business to believe the numbers are a crock - a contrivance of an 'in group' to manipulate the process to their advantage. Our view is that the EPDs have been invaluable and are essential to profitable cattle selection.

The Neogen products produce data that verifies parentage and predicts the breeding value of an individual animal in different traits. International Genetic Solution (IGS) then processes that genomic data and puts it into a usable format by updating and reporting genomically-enhanced EPDs (GE-EPDs) weekly.

The value of the genomic information is in improving the accuracy of the EPDs. The improved accuracy, according to the statisticians, can be expressed in the number of progeny records that would be required to produce equally valid phenotypically derived EPD values. GGP and that genomic data contributes an equivalent amount of information that would be derived from 21 offspring of a given bull.

To sum up, let us revisit the data versus information idea. Investigation of the genome and accumulation of data to predict outcomes will continue across the entire spectrum of biology. No one can stop it. There is nothing fundamentally wrong or threatening with that process. At the same time, we believe that the interpretation of such data in our business is less than ideal, its impact sometimes exaggerated. In other words, the translation of data to usable information, actionable intelligence, is a work in progress. We believe that process will evolve and improve, particularly as more data accumulates.

Nothing in this world is perfect, including the tools we have to predict outcomes in the vast, magnificent world of biology. But EPDs are still, and will remain, the selection tools to use in choosing bulls to buy. They account for all sources of information on the individual, including pedigree, with collateral relatives' performance, individual performance, and genomic testing. They are the best tools we have and have most definitely worked for us.







Lot 105 BIEBER STOCKMARKET K394

I recently read this quote by Lee Leachman:

“So the real question is, do you want to work as an independent rancher raising what you think is right, hoping that the market pays you enough to be profitable? Or do you want to work in a system that gives you really clear direction on how to build the best cow, the best feeder animal, the best carcass, and then brings the highest possible percentage of those dollars back to the farm?”

This lot’s data indicates that he will bring more dollars back to any operation.

BORN: 5/4/2022		REG: 4661911		100% AR 1A								
PIE STOCKMAN 4051				ADG 3.43								
BIEBER CL STOCKMARKET E119				WDA 3.37								
BIEBER CLADELLE 475C				AScr 37.97								
BIEBER HARD DRIVEY120				CE **								
BIEBER TILLY 583G AOD: 3				GROWTH Sc. G6								
MPPA: 107		BIEBER TILLY 399W		EPD Data Generated 9/28/2023								
CED	BW	WW	YW	MILK	ME	HPG	CEM	STAY	MARB	REA	FAT	
EPD	13	-1.4	92	147	26	17	10	7	9	1.03	0.30	0.04
Rank	51%	59%	1%	1%	50%	98%	74%	41%	97%	1%	17%	89%
Wts.		92	685	1235								
HERD BUILDER 9		GRID MASTER 71		PRO S 81								
RANK 99%		RANK 4%		RANK 69%								







## LOT 106 BIEBER FLASHDRIVE K399

The Flashdrive sons are getting a lot of attention this year and Lot 106 is one of the reasons why. Flashdrive's progeny are easy fleshing, good natured, and offer you great data all the way around. You really can't go wrong with him on the top side and the Rose cowline on the bottom. This bull boasts WW,YW, Marb, GridMaster, and ProS EPDs all in the top 1% of the breed which is an outstanding combination of data.

BORN: 5/7/2022

REG: 4661941

100% AR 1A

BIEBER HARD DRIVE E640  
**BIEBER FLASHDRIVE G266**  
 BIEBER FLOWER 312E  
 PIE STOCKMAN 4051  
**BIEBER ROSE 454F** AOD: 4  
 MPPA: 100 BIEBER ROSE 252C

ADG 3.5  
 WDA 3.29  
 ASCr 39.06  
 CE \*\*  
 GROWTH Sc. G6

EPD Data Generated 9/28/2023

	CED	BW	WW	YW	MILK	ME	HPG	CEM	STAY	MARB	REA	EAT
EPD	13	-1.6	83	144	29	8	12	9	15	1.02	0.06	0.03
Rank	44%	55%	1%	1%	21%	78%	30%	12%	50%	1%	65%	74%
Wts.		83	608	1170								

HERDBUILDER	67	GRIDMASTER	85	PROS	152
RANK	26%	RANK	1%	RANK	1%





# AGE-ADVANTAGED BULLS

## 107 BIEBER FLASHDRIVE K424

BORN: 5/11/2022 REG: 4662019 100% AR 1A

BIEBER HARD DRIVE E640	ADG 3.18
<b>BIEBER FLASHDRIVE G266</b>	WDA 3.26
BIEBER FLOWER 312E	AScr 41.19
BECKTON EPIC R397 K	CE *
<b>BIEBER TORYANNA 299D</b> AOD: 6	GROWTH Sc. G6
MPPA: 99 BIEBER TORYANNA 328Y	EPD Data Generated 9/28/2023

	CED	BW	WW	YW	MILK	ME	HPG	CEM	STAY	MARB	REA	FAT
EPD	5	1.1	78	128	27	8	14	2	17	0.88	0.54	0.02
Rank	99%	93%	5%	4%	35%	76%	11%	99%	34%	2%	3%	62%
Wts.		101	649	1157								
HERDBUILDER	51	GRIDMASTER	92	PROS	143							
RANK	58%	RANK	1%	RANK	2%							

Lot 107 has data that puts him in pretty elite company. When you use him on your cows his progeny will crush the scales and make your calves very marketable.

## 108 BIEBER HIGH DENSITY K418

BORN: 5/10/2022 REG: 4662001 100% AR 1A

BIEBER HARD DRIVEY120	ADG 3.24
<b>BIEBER HIGH DENSITY H558</b>	WDA 3.28
BIEBER ENCHANTRESS 359B	AScr 38.16
BIEBER FEDERATION B544	CE *
<b>BIEBER TORYANNA 541E</b> AOD: 5	GROWTH Sc. G5
MPPA: 101 BIEBER TORYANNA 211Y	EPD Data Generated 9/28/2023

	CED	BW	WW	YW	MILK	ME	HPG	CEM	STAY	MARB	REA	FAT
EPD	8	1.6	77	119	26	8	12	4	13	0.78	0.55	0.02
Rank	95%	96%	5%	10%	51%	78%	30%	95%	75%	4%	2%	51%
Wts.		90	652	1170								
HERDBUILDER	34	GRIDMASTER	64	PROS	98							
RANK	86%	RANK	9%	RANK	41%							

High Density is a Hard Drive son we thought enough of to use in our program and we were not disappointed. This lot is thick and stout and hits some very important data when it comes to profit.

## 109 BIEBER ENERGIZE K547

BORN: 5/12/2022 REG: 4682407 100% AR 1A

BIEBER CLATOMIC C218	ADG 3.02	ET
<b>BIEBER CL ENERGIZE F121</b>	WDA 3.14	ET
BIEBER CLADELLE 575D	AScr 38.23	
BIEBER CL STOCKMARKET E119	CE ***	
<b>BIEBER PRIMROSE 552H</b> AOD: 2	GROWTH Sc. G4	
MPPA: 98 BIEBER PRIMROSE 474B	EPD Data Generated 9/28/2023	

	CED	BW	WW	YW	MILK	ME	HPG	CEM	STAY	MARB	REA	FAT
EPD	15	-5.3	63	110	28	12	10	8	17	0.74	0.34	0.03
Rank	24%	5%	41%	24%	25%	92%	83%	37%	24%	5%	13%	79%
Wts.		78	654	1137								
HERDBUILDER	53	GRIDMASTER	73	PROS	126							
RANK	55%	RANK	4%	RANK	9%							

This is the kind of bull that really hits a lot of the sweet spots that will lead to a cowherd and calf crop that are very marketable. His cowline has been producing herdsires for generations. Lot 109 is from our ET program.

## Supplement Sheets

SUPPLEMENT SHEETS WILL BE AVAILABLE ON OUR WEBSITE AND ON SALE DAY. THIS WILL INCLUDE:

- DUE DATE, CALF SEX, AND MATE ON SUMMER COWS
- BULL SCROTALS AND WEIGHTS
- CATALOG CORRECTIONS





# AGE-ADVANTAGED BULLS

## 110 BIEBER FLASHDRIVE K466

BORN: 5/26/2022 REG: 4662141 100% AR 1A

BIEBER HARD DRIVE E640	ADG 3.3
<b>BIEBER FLASHDRIVE G266</b>	WDA 3.58
BIEBER FLOWER 312E	AScr 40.68
BIEBER ROLLIN DEEP Y118	CE *
<b>BIEBER PRIMROSE 501C</b> AOD: 7	GROWTH Sc. G6
MPPA: 109 BASIN PRIMROSE 24T9	EPD Data Generated 9/28/2023

	CED	BW	WW	YW	MILK	ME	HPG	CEM	STAY	MARB	REA	FAT
EPD	5	4.1	89	144	31	12	16	4	12	0.93	0.38	0.04
Rank	99%	99%	1%	1%	9%	91%	3%	92%	85%	1%	9%	86%
Wts.		111	752	1280								
HERDBUILDER	32											
RANK	89%											
GRIDMASTER	87											
RANK	1%											
PROS	118											
RANK	14%											



## 111 BIEBER FLASHDRIVE K443

BORN: 5/17/2022 REG: 4662071 100% AR 1A

BIEBER HARD DRIVE E640	ADG 2.96
<b>BIEBER FLASHDRIVE G266</b>	WDA 3.2
BIEBER FLOWER 312E	AScr 39.39
BIEBER GLADIATOR C386	CE *
<b>BIEBER PRIMROSE 356F</b> AOD: 4	GROWTH Sc. G6
MPPA: 104 BIEBER PRIMROSE 492B	EPD Data Generated 9/28/2023

	CED	BW	WW	YW	MILK	ME	HPG	CEM	STAY	MARB	REA	FAT
EPD	10	-0.4	81	124	30	8	17	8	9	0.78	0.50	0.03
Rank	81%	77%	2%	6%	12%	77%	2%	39%	97%	4%	4%	69%
Wts.		98	696	1171								
HERDBUILDER	36											
RANK	84%											
GRIDMASTER	70											
RANK	5%											
PROS	106											
RANK	28%											



## 112 BIEBER STOCKMARKET K428

BORN: 5/12/2022 REG: 4662027 100% AR 1A

PIE STOCKMAN 4051	ADG 2.98
<b>BIEBER CL STOCKMARKET E119</b>	WDA 3.09
BIEBER CLADELLE 475C	AScr 40.23
BIEBER LB MITIGATOR C314	CE **
<b>BIEBER DYNAMO 205E</b> AOD: 5	GROWTH Sc. G5
MPPA: 98 BIEBER DYNAMO 145C	EPD Data Generated 9/28/2023

	CED	BW	WW	YW	MILK	ME	HPG	CEM	STAY	MARB	REA	FAT
EPD	13	-4.2	66	110	25	12	10	10	9	0.80	0.25	0.06
Rank	51%	12%	31%	24%	58%	93%	84%	7%	97%	3%	25%	98%
Wts.		88	629	1105								
HERDBUILDER	13											
RANK	98%											
GRIDMASTER	64											
RANK	9%											
PROS	77											
RANK	75%											



Here is a Stockmarket son that has really hit all the marks. He looks the part and will get your attention.



## 113 BIEBER HIGH DENSITY K407

BORN: 5/9/2022 REG: 4661965 100% AR 1A

BIEBER HARD DRIVE Y120	ADG 2.96
<b>BIEBER HIGH DENSITY H558</b>	WDA 3.2
BIEBER ENCHANTRESS 359B	AScr 40.13
BIEBER LET'S ROLL B563	CE *
<b>BIEBER MISS DANA 214E</b> AOD: 5	GROWTH Sc. G6
MPPA: 110 BIEBER MISS DANA 203B	EPD Data Generated 9/28/2023

	CED	BW	WW	YW	MILK	ME	HPG	CEM	STAY	MARB	REA	FAT
EPD	8	2.9	84	131	26	14	14	1	14	0.55	0.49	0.02
Rank	96%	99%	1%	3%	45%	96%	10%	99%	65%	22%	4%	47%
Wts.		99	687	1160								
HERDBUILDER	28											
RANK	92%											
GRIDMASTER	44											
RANK	36%											
PROS	72											
RANK	82%											



Bieber High Density H558



# AGE-ADVANTAGED BULLS

114

**BIEBER KIRKLAND K463**

BORN: 5/26/2022 REG: 4662131 100% AR 1A

HXC 5545C	ADG 3.07
KJL/CLZB KIRKLAND 8003F	WDA 3.11
HXC 107Y	AScr 35.68
BIEBER SPARTACUS A193	CE ***
BIEBER MIMI 184F AOD: 4	GROWTH Sc. G4
MPPA: 97 BIEBER DURHEIM 275D	EPD Data Generated 9/28/2023

	CED	BW	WW	YW	MILK	ME	HPG	CEM	STAY	MARB	REA	FAT
EPD	15	-4.0	60	99	27	0	12	7	13	0.30	0.11	0.02
Rank	25%	14%	53%	45%	38%	32%	37%	44%	80%	77%	53%	46%
Wts.	84	616	1108									
HERDBUILDER	45											
RANK	70%											
GRIDMASTER	38											
RANK	48%											
PROS	83											
RANK	66%											



115

**BIEBER COMPLETE K412**

BORN: 5/10/2022 REG: 4661985 100% AR 1A

LEACHMAN PLEDGE A282Z	ADG 3.5
KJL/CLZB COMPLETE 7000E	WDA 3.4
HXC 507C	AScr 39.16
BIEBER HARD DRIVE Y120	CE ***
BIEBER PRIMROSE 274D AOD: 6	GROWTH Sc. G6
MPPA: 100 BIEBER PRIMROSE 266X	EPD Data Generated 9/28/2023

	CED	BW	WW	YW	MILK	ME	HPG	CEM	STAY	MARB	REA	FAT
EPD	16	-3.4	81	134	27	9	15	8	14	0.77	0.35	0.00
Rank	9%	22%	2%	2%	35%	84%	7%	27%	74%	4%	12%	20%
Wts.	83	636	1197									
HERDBUILDER	52											
RANK	56%											
GRIDMASTER	86											
RANK	1%											
PROS	139											
RANK	3%											



116

**BIEBER STOCKMARKET K402**

BORN: 5/8/2022 REG: 4661949 100% AR 1A

PIE STOCKMAN 4051	ADG 3.52
BIEBER CL STOCKMARKET E119	WDA 3.54
BIEBER CLADELLE 475C	AScr 43.1
BIEBER ROLLIN DEEP Y118	CE **
BIEBER PRIMROSE 242D AOD: 6	GROWTH Sc. G6
MPPA: 106 BIEBER PRIMROSE 151A	EPD Data Generated 9/28/2023

	CED	BW	WW	YW	MILK	ME	HPG	CEM	STAY	MARB	REA	FAT
EPD	15	-2.2	81	136	26	10	10	18	0.99	0.55	0.10	
Rank	25%	43%	2%	2%	50%	86%	71%	8%	20%	1%	2%	99%
Wts.	90	694	1257									
HERDBUILDER	73											
RANK	17%											
GRIDMASTER	81											
RANK	2%											
PROS	154											
RANK	1%											



117

**BIEBER FLASHDRIVE K411**

BORN: 5/9/2022 REG: 4661977 100% AR 1A

BIEBER HARD DRIVE E640	ADG 2.97
BIEBER FLASHDRIVE G266	WDA 3.1
BIEBER FLOWER 312E	AScr 38.13
PIE STOCKMAN 4051	CE *
BIEBER RENEE 533G AOD: 3	GROWTH Sc. G6
MPPA: 101 BIEBER RENEE 477A	EPD Data Generated 9/28/2023

	CED	BW	WW	YW	MILK	ME	HPG	CEM	STAY	MARB	REA	FAT
EPD	8	2.9	88	146	29	15	12	7	14	0.71	0.38	0.02
Rank	95%	99%	1%	1%	21%	97%	30%	50%	68%	7%	9%	62%
Wts.	93	674	1151									
HERDBUILDER	45											
RANK	69%											
GRIDMASTER	69											
RANK	6%											
PROS	114											
RANK	18%											



This lot's dam is a maternal sister to Bieber Spartan E639, who is leased to ABS Global.





# AGE-ADVANTAGED BULLS

## 118 BIEBER STOCKMARKET K533

BORN: 5/2/2022 REG: 4682379 100% AR 1A

PIE STOCKMAN 4051	ADG 3.34	ET
<b>BIEBER CL STOCKMARKET E119</b>	WDA 2.98	ET
BIEBER CLADELLE 475C	AScr 37.9	
BIEBER HARD DRIVE Y120	CE ***	
<b>BIEBER ENCHANTRESS 516H</b> AOD: 2	GROWTH Sc. G5	
MPPA: BIEBER ENCHANTRESS 359B	EPD Data Generated 9/28/2023	

	CED	BW	WW	YW	MILK	ME	HPG	CEM	STAY	MARB	REA	FAT
EPD	17	-5.8	67	109	22	12	10	10	14	0.88	0.44	0.05
Rank	6%	3%	25%	24%	78%	93%	71%	6%	71%	2%	6%	95%
Wts.	68	545	1079									
HERDBUILDER	41	GRIDMASTER	56	PROS	97							
RANK	77%	RANK	16%	RANK	42%							



Dam is a full sister to Bieber High Density H558.



## 119 BIEBER FLASHDRIVE K441

BORN: 5/16/2022 REG: 4662065 100% AR 1A

BIEBER HARD DRIVE E640	ADG 2.81	
<b>BIEBER FLASHDRIVE G266</b>	WDA 3.21	
BIEBER FLOWER 312E	AScr 37.36	
LSF RAB EXCLUSIVE 2793Z	CE *	
<b>BIEBER MINERVA 331C</b> AOD: 7	GROWTH Sc. G6	
MPPA: 108 BIEBER MINERVA 219Z	EPD Data Generated 9/28/2023	

	CED	BW	WW	YW	MILK	ME	HPG	CEM	STAY	MARB	REA	FAT
EPD	8	0.6	83	130	29	16	13	1	13	1.09	0.52	0.01
Rank	97%	89%	2%	3%	17%	98%	19%	99%	75%	1%	3%	29%
Wts.	104	718	1168									
HERDBUILDER	16	GRIDMASTER	92	PROS	108							
RANK	98%	RANK	1%	RANK	26%							



## 120 BIEBER STOCKMARKET K440

BORN: 5/16/2022 REG: 4662063 98.4% AR 1.6% XX 1B

PIE STOCKMAN 4051	ADG 3.63	
<b>BIEBER CL STOCKMARKET E119</b>	WDA 3.43	
BIEBER CLADELLE 475C	AScr 38.36	
BECKTON EPIC R397 K	CE *	
<b>BIEBER DURHEIM 444D</b> AOD: 6	GROWTH Sc. G6	
MPPA: 100 BD3P 168	EPD Data Generated 9/28/2023	

	CED	BW	WW	YW	MILK	ME	HPG	CEM	STAY	MARB	REA	FAT
EPD	11	-1.9	72	126	23	7	9	8	14	0.82	0.22	0.07
Rank	68%	49%	12%	5%	74%	72%	91%	31%	64%	3%	30%	99%
Wts.	101	602	1183									
HERDBUILDER	46	GRIDMASTER	75	PROS	122							
RANK	68%	RANK	3%	RANK	11%							



## 121 BIEBER FOREFRONT K549

BORN: 5/14/2022 REG: 4682411 100% AR 1A

ANDRAS FUSION R236	ADG 3.33	ET
<b>BIEBER FOREFRONT B281</b>	WDA 3.09	ET
BIEBER LAURA 112W	AScr 40.29	
BIEBER IN THE BLACK D315	CE *	
<b>BIEBER ENCHANTRESS 538H</b> AOD: 2	GROWTH Sc. G6	
MPPA: BIEBER ENCHANTRESS 399D	EPD Data Generated 9/28/2023	

	CED	BW	WW	YW	MILK	ME	HPG	CEM	STAY	MARB	REA	FAT
EPD	12	-2.0	71	127	29	0	13	8	15	0.88	0.40	0.01
Rank	67%	47%	14%	5%	17%	34%	20%	26%	59%	2%	8%	31%
Wts.	103	552	1085									
HERDBUILDER	64	GRIDMASTER	96	PROS	160							
RANK	31%	RANK	1%	RANK	1%							



Bieber  
Laura  
112W

BRITTNEY SPENCER



# AGE-ADVANTAGED BULLS

122

**BIEBER COMPLETE K439**

BORN: 5/16/2022

REG: 4662061

100% AR 1A

LEACHMAN PLEDGE A282Z

**KJL/CLZB COMPLETE 7000E**

HXC 507C

LOOSLI RIGHT ON 423

**BIEBER ROSE 485D** AOD: 6

MPPA: 101

**BIEBER ROSE 435B**

ADG 3.94  
WDA 3.71  
ASCR 39.36  
CE \*  
GROWTH SC. G6

EPD Data Generated 9/28/2023

	CED	BW	WW	YW	MILK	ME	HPG	CEM	STAY	MARB	REA	FAT
EPD	10	-1.1	82	141	28	16	14	6	6	0.63	0.02	0.03
Rank	82%	64%	2%	1%	30%	98%	16%	79%	99%	13%	74%	82%
Wts.		97	655	1285								
HERDBUILDER	-7											
RANK	99%											
GRIDMASTER	74											
RANK	3%											
PROS	67											
RANK	87%											



123

**BIEBER HIGH DENSITY K451**

BORN: 5/20/2022

REG: 4662095

100% AR 1A

BIEBER HARD DRIVE Y120

**BIEBER HIGH DENSITY H558**

BIEBER ENCHANTRESS 359B

LSF RAB EXCLUSIVE 2793Z

**BIEBER DAKEL 429C** AOD: 7

MPPA: 99

**BIEBER DAKEL 106Y**

ADG 2.43  
WDA 2.86  
ASCR 39.49  
CE \*  
GROWTH SC. G5

EPD Data Generated 9/28/2023

	CED	BW	WW	YW	MILK	ME	HPG	CEM	STAY	MARB	REA	FAT
EPD	7	0.5	74	107	24	16	12	3	14	0.56	0.54	0.01
Rank	98%	88%	9%	28%	63%	98%	35%	98%	68%	20%	3%	40%
Wts.		93	658	1047								
HERDBUILDER	23											
RANK	95%											
GRIDMASTER	33											
RANK	59%											
PROS	56											
RANK	94%											



124

**BIEBER JUST RIGHT K461**

BORN: 5/25/2022

REG: 4662127

100% AR 1A

PIE JUST RIGHT 540

**PIE JUST RIGHT 005**

C-BAR ABIGRACE 838F

BIEBER HARD DRIVE Y120

**BIEBER ADELLE 550E** AOD: 5

MPPA: 100

**BIEBER ADELLE 311Y**

ADG 3.17  
WDA 3.22  
ASCR 34.65  
CE \*\*\*  
GROWTH SC. G5

EPD Data Generated 9/28/2023

	CED	BW	WW	YW	MILK	ME	HPG	CEM	STAY	MARB	REA	FAT
EPD	17	-3.9	72	110	25	10	11	10	17	0.59	0.32	0.02
Rank	7%	16%	12%	23%	58%	86%	50%	6%	34%	17%	15%	58%
Wts.		80	632	1139								
HERDBUILDER	65											
RANK	31%											
GRIDMASTER	45											
RANK	34%											
PROS	109											
RANK	24%											



125

**BIEBER BLANK CHECK K465**

BORN: 5/26/2022

REG: 4662139

100% AR 1A

9 MILE FRANCHISE 6305

**LSF SRR BLANK CHECK 0162H**

LSF SRR LANA C5050 E7038

BIEBER SPARTACUS A193

**BIEBER SURPRISE 250F** AOD: 4

MPPA: 92

**BIEBER SURPRISE 404C**

ADG 3.54  
WDA 3.21  
ASCR 38.68  
CE \*\*\*  
GROWTH SC. G6

EPD Data Generated 9/28/2023

	CED	BW	WW	YW	MILK	ME	HPG	CEM	STAY	MARB	REA	FAT
EPD	16	-2.2	72	129	30	8	12	9	14	0.70	0.26	0.06
Rank	12%	43%	13%	3%	16%	76%	37%	13%	73%	7%	23%	99%
Wts.		69	534	1102								
HERDBUILDER	50											
RANK	60%											
GRIDMASTER	76											
RANK	2%											
PROS	126											
RANK	8%											





# AGE-ADVANTAGED BULLS

## 126

## BIEBER FOREFRONT K539

BORN: 5/6/2022

REG: 4682391

100% AR 1A

ANDRAS FUSION R236

BIEBER FOREFRONT B281

BIEBER LAURA 112W

BIEBER CL STOCKMAN E116

BIEBER DATELINE 559H AOD: 2

MPPA: 108

BIEBER DATELINE 525F

ADG 2.88 ET  
WDA 2.91 ET  
ASCR 29.03  
CE \*\*\*  
GROWTH Sc. G5

EPD Data Generated 9/28/2023

	CED	BW	WW	YW	MILK	ME	HPG	CEM	STAY	MARB	REA	FAT
EPD	16	-3.5	69	119	32	17	13	10	14	0.85	0.36	0.03
Rank	11%	21%	22%	10%	6%	99%	21%	5%	73%	2%	11%	70%
Wts.		89	588	1049								

HERDBUILDER 43 RANK 73% GRIDMASTER 71 RANK 5% PROS 114 RANK 19%



## 127

## BIEBER HIGH DENSITY K534

BORN: 5/3/2022

REG: 4682381

100% AR 1A

BIEBER HARD DRIVE Y120

BIEBER HIGH DENSITY H558

BIEBER ENCHANTRESS 359B

BIEBER CL ATOMIC C218

BIEBER MAIDMARION 325F AOD: 4

MPPA: 98

BIEBER MAIDMARION 189Y

ADG 3.08 ET  
WDA 3.05 ET  
ASCR 38.94  
CE \*  
GROWTH Sc. G6

EPD Data Generated 9/28/2023

	CED	BW	WW	YW	MILK	ME	HPG	CEM	STAY	MARB	REA	FAT
EPD	11	0.9	78	127	24	17	12	6	14	0.60	0.53	0.03
Rank	73%	92%	4%	4%	61%	99%	45%	74%	64%	16%	3%	70%
Wts.		81	603	1096								

HERDBUILDER 35 RANK 85% GRIDMASTER 44 RANK 35% PROS 80 RANK 71%



This is a full brother to lot 128.

## 128

## BIEBER HIGH DENSITY K543

BORN: 5/8/2022

REG: 4682399

100% AR 1A

BIEBER HARD DRIVE Y120

BIEBER HIGH DENSITY H558

BIEBER ENCHANTRESS 359B

BIEBER CL ATOMIC C218

BIEBER MAIDMARION 325F AOD: 4

MPPA: 98

BIEBER MAIDMARION 189Y

ADG 2.71 ET  
WDA 2.86 ET  
ASCR 39.1  
CE \*  
GROWTH Sc. G5

EPD Data Generated 9/28/2023

	CED	BW	WW	YW	MILK	ME	HPG	CEM	STAY	MARB	REA	FAT
EPD	11	-1.1	71	115	24	17	12	6	17	0.40	0.33	0.01
Rank	71%	64%	15%	15%	61%	99%	45%	68%	33%	52%	14%	37%
Wts.		77	599	1033								

HERDBUILDER 47 RANK 66% GRIDMASTER 19 RANK 85% PROS 66 RANK 88%



This is a full brother to lot 127.







## LOT 129 BIEBER ENERGIZE K548

Lot 129 is an Energize son that is out of one of our favorite cowlines, Enchantress. His dam is 359B, a donor in our ET program, that sold in our 2022 Fall Sale to Drew Edleman with Edleman Cattle Company to make Lim-Flex progeny. She is also the dam of Bieber High Density H558, one of our favorite Hard Drive Y120 sons. With Rollin Deep on the other side, this pedigree is stacked for prepotency making this lot one to look for on sale day. Make sure you don't miss him in the pen!

BORN: 5/13/2022

REG: 4682409

100% AR 1A

BIEBER CL ATOMIC C218  
**BIEBER CL ENERGIZE F121**  
 BIEBER CL ADELLE 575D  
 BIEBER ROLLIN DEEP Y118  
**BIEBER ENCHANTRESS 359B** AOD: 8  
 MPPA: 99 BIEBER ENCHANTRESS 147W

ADG 2.87 ET  
 WDA 3.04 ET  
 ASer 39.26  
 CE \*\*\*  
 GROWTH Sc. G6

EPD Data Generated 9/28/2023

	CED	BW	WW	YW	MILK	ME	HPG	CEM	STAY	MARB	REA	FAT
EPD	14	-1.6	74	120	25	14	12	7	16	0.65	0.26	0.06
Rank	26%	55%	10%	9%	52%	96%	36%	48%	39%	11%	23%	99%
Wts.		74	638	1098								
HERDBUILDER RANK	52	57%	GRIDMASTER RANK	51	22%	PROS RANK	103	33%				





# AGE-ADVANTAGED BULLS

130

BIEBER HIGH DENSITY K432

BORN: 5/13/2022

REG: 4662037

100% AR 1A

BIEBER HARD DRIVE Y120  
BIEBER HIGH DENSITY H558  
BIEBER ENCHANTRESS 359B  
BIEBER H HUGHESW109

BIEBER GALLEE 550D AOD: 6

MPPA: 103

BIEBER GALLEE 291X

ADG 3.08  
WDA 2.91  
ASCR 34.26  
CE \*  
GROWTH SC. G6

EPD Data Generated 9/28/2023

	CED	BW	WW	YW	MILK	ME	HPG	CEM	STAY	MARB	REA	FAT
EPD	9	1.8	84	130	24	20	14	6	16	0.51	0.44	0.02
Rank	91%	96%	1%	3%	69%	99%	10%	68%	40%	28%	6%	51%
Wts.		95	511	1004								

HERDBUILDER 51 RANK 58%  
GRIDMASTER 52 RANK 22%  
PROS 103 RANK 33%



131

BIEBER ENGERGIZE K532

BORN: 4/26/2022

REG: 4682377

100% AR 1A

BIEBER CL ATOMIC C218  
BIEBER CL ENERGIZE F121  
BIEBER CL ADELLE 575D  
BIEBER CL STOCKMARKET E119  
BIEBER SURPRISE 558H AOD: 2

MPPA: 93

BIEBER SURPRISE 555F

ADG 3.55 ET  
WDA 3.25 ET  
ASCR 35.71  
CE \*\*\*  
GROWTH SC. G5

EPD Data Generated 9/28/2023

	CED	BW	WW	YW	MILK	ME	HPG	CEM	STAY	MARB	REA	FAT
EPD	17	-5.5	65	111	28	19	10	9	15	0.95	0.12	0.06
Rank	5%	4%	35%	22%	28%	99%	73%	17%	59%	1%	51%	98%
Wts.		62	595	1163								

HERDBUILDER 33 RANK 88%  
GRIDMASTER 73 RANK 4%  
PROS 106 RANK 28%



132

BIEBER STOCKMARKET K479

BORN: 5/31/2022

REG: 4665481

100% AR 1A

PIE STOCKMAN 4051  
BIEBER CL STOCKMARKET E119  
BIEBER CL ADELLE 475C  
BIEBER HARD DRIVEY120  
BIEBER CL ADELLE 575D AOD: 6

MPPA: 92

BIEBER ADELLE 297Y

ADG 2.75  
WDA 2.99  
ASCR 37.84  
CE \*\*\*  
GROWTH SC. G4

EPD Data Generated 9/28/2023

	CED	BW	WW	YW	MILK	ME	HPG	CEM	STAY	MARB	REA	FAT
EPD	18	-6.1	61	104	25	7	9	10	15	0.84	0.49	0.04
Rank	4%	2%	47%	35%	60%	71%	90%	5%	55%	2%	4%	89%
Wts.		76	641	1080								

HERDBUILDER 50 RANK 59%  
GRIDMASTER 73 RANK 4%  
PROS 124 RANK 10%



Maternal brother to Bieber CL Energize F121.





# AGE-ADVANTAGED BULLS

## 133 BIEBER STOCKMARKET K429

BORN: 5/12/2022 REG: 4662029 100% AR 1A

PIE STOCKMAN 4051	ADG 2.79
<b>BIEBER CL STOCKMARKET E119</b>	WDA 3.04
BIEBER CLADELLE 475C	ASCR 36.23
BECKTON EPIC R397 K	CE ***
<b>BIEBER MISS RED 292D</b> AOD: 6	GROWTH Sc. G5
MPPA: 95 BIEBER MISS RED 316X	EPD Data Generated 9/28/2023

	CED	BW	WW	YW	MILK	ME	HPG	CEM	STAY	MARB	REA	FAT
EPD	15	-3.3	70	113	22	12	8	10	15	0.75	0.45	0.06
Rank	17%	23%	18%	18%	81%	92%	95%	5%	59%	5%	5%	99%
Wts.		80	658	1104								
HERDBUILDER	45											
RANK	70%											
GRIDMASTER	66											
RANK	7%											
PROS	112											
RANK	21%											



## 134 BIEBER STOCKMARKET K462

BORN: 5/26/2022 REG: 4662129 100% AR 1A

PIE STOCKMAN 4051	ADG 2.91
<b>BIEBER CL STOCKMARKET E119</b>	WDA 2.92
BIEBER CLADELLE 475C	ASCR 37.68
BIEBER HARD DRIVE Y120	CE **
<b>BIEBER SURPRISE 333G</b> AOD: 3	GROWTH Sc. G5
MPPA: 101 BIEBER SUPRISE 470A	EPD Data Generated 9/28/2023

	CED	BW	WW	YW	MILK	ME	HPG	CEM	STAY	MARB	REA	FAT
EPD	13	-4.5	70	110	24	3	9	8	12	0.88	0.43	0.04
Rank	42%	10%	18%	23%	64%	46%	94%	33%	86%	2%	6%	86%
Wts.		85	588	1055								
HERDBUILDER	33											
RANK	88%											
GRIDMASTER	62											
RANK	10%											
PROS	95											
RANK	45%											



## 135 BIEBER STOCKMARKET K423

BORN: 5/11/2022 REG: 4662017 100% AR 1A

PIE STOCKMAN 4051	ADG 2.72
<b>BIEBER CL STOCKMARKET E119</b>	WDA 2.9
BIEBER CLADELLE 475C	ASCR 38.19
BIEBER FOREFRONT B281	CE ***
<b>BIEBER TILLY 274E</b> AOD: 5	GROWTH Sc. G5
MPPA: 100 BIEBER TILLY 434A	EPD Data Generated 9/28/2023

	CED	BW	WW	YW	MILK	ME	HPG	CEM	STAY	MARB	REA	FAT
EPD	18	-4.1	65	107	25	2	11	12	13	0.85	0.05	0.03
Rank	4%	13%	33%	29%	52%	43%	58%	1%	80%	2%	67%	76%
Wts.		80	613	1048								
HERDBUILDER	58											
RANK	45%											
GRIDMASTER	61											
RANK	11%											
PROS	119											
RANK	14%											



## 136 BIEBER POINT BLANK K502

BORN: 6/8/2022 REG: 4662265 100% AR 1A

WFL MERLIN 018A	ADG 3.26
<b>LRL POINT BLANK H23</b>	WDA 3.17
LRL LAKOTA F143	ASCR 38.1
MILWILLAH MARBLE BAR J53	CE *
<b>BIEBER DESIGN 377F</b> AOD: 4	GROWTH Sc. G6
MPPA: 96 BIEBER DESIGN 221C	EPD Data Generated 9/28/2023

	CED	BW	WW	YW	MILK	ME	HPG	CEM	STAY	MARB	REA	FAT
EPD	12	-1.5	76	121	31	5	10	6	7	0.58	0.36	0.00
Rank	57%	57%	7%	8%	10%	61%	71%	75%	99%	18%	11%	10%
Wts.		102	561	1084								
HERDBUILDER	-6											
RANK	99%											
GRIDMASTER	46											
RANK	32%											
PROS	39											
RANK	99%											





# AGE-ADVANTAGED BULLS

## 137 BIEBER HIGH DENSITY K430

BORN: 5/13/2022 REG: 4662033 100% AR II

BIEBER HARD DRIVE Y120	ADG 2.74
<b>BIEBER HIGH DENSITY H558</b>	WDA 2.94
BIEBER ENCHANTRESS 359B	AScr 40.26
9 MILE FRANCHISE 6305	CE *
<b>BIEBER TILLY 558G</b> AOD: 3	GROWTH Sc. G6
MPPA: 102 BIEBER TILLY 399W	EPD Data Generated 9/28/2023

	CED	BW	WW	YW	MILK	ME	HPG	CEM	STAY	MARB	REA	FAT
EPD	10	-2.8	74	120	28	15	13	6	15	0.44	0.60	0.02
Rank	87%	32%	10%	9%	30%	97%	24%	80%	53%	42%	2%	56%
Wts.	97	656	1095									
HERDBUILDER	44											
RANK	72%											
GRIDMASTER	36											
RANK	53%											
PROS	80											
RANK	71%											



This lot is a maternal sister to Rollin Deep Y118.

## 138 BIEBER KIRKLAND K480

BORN: 5/31/2022 REG: 4662181 100% AR 1A

HXC 5545C	ADG 2.82
<b>KJL/CLZB KIRKLAND 8003F</b>	WDA 3.04
HXC 107Y	AScr 37.84
BIEBER LB MITIGATOR C314	CE **
<b>BIEBER TILLY 404E</b> AOD: 5	GROWTH Sc. G5
MPPA: 99 BIEBER TILLY 364Z	EPD Data Generated 9/28/2023

	CED	BW	WW	YW	MILK	ME	HPG	CEM	STAY	MARB	REA	FAT
EPD	12	-1.4	65	107	24	5	13	6	10	0.45	0.11	0.01
Rank	54%	59%	33%	28%	63%	58%	21%	68%	95%	40%	53%	35%
Wts.	88	638	1090									
HERDBUILDER	19											
RANK	97%											
GRIDMASTER	36											
RANK	52%											
PROS	55											
RANK	95%											



## 139 BIEBER GATE KEEPER K468

BORN: 5/26/2022 REG: 4662147 100% AR 1A

BADLANDS CINCHED 521C	ADG 3.18
<b>TJS GATE KEEPER F106</b>	WDA 2.95
TJS LARKABA B137	AScr 36.68
BIEBER FOREFRONT B281	CE *
<b>BIEBER PRIMROSE 522H</b> AOD: 2	GROWTH Sc. G5
MPPA: 97 BIEBER PRIMROSE 191D	EPD Data Generated 9/28/2023

	CED	BW	WW	YW	MILK	ME	HPG	CEM	STAY	MARB	REA	FAT
EPD	12	-1.5	67	111	22	-2	15	6	17	0.45	0.01	0.03
Rank	64%	57%	28%	21%	82%	23%	8%	68%	30%	40%	76%	70%
Wts.	102	553	1064									
HERDBUILDER	78											
RANK	11%											
GRIDMASTER	45											
RANK	34%											
PROS	122											
RANK	11%											



## 140 BIEBER JUST RIGHT K499

BORN: 6/6/2022 REG: 4662253 100% AR 1A

PIE JUST RIGHT 540	ADG 2.65
<b>PIE JUST RIGHT 005</b>	WDA 2.82
C-BAR ABIGRACE 838F	AScr 37.04
BIEBER DRIVEN C540	CE **
<b>BIEBER ENCHANTRESS 309E</b> AOD: 5	GROWTH Sc. G4
MPPA: 97 BIEBER ENCHANTRESS 354X	EPD Data Generated 9/28/2023

	CED	BW	WW	YW	MILK	ME	HPG	CEM	STAY	MARB	REA	FAT
EPD	13	-2.3	65	95	24	6	12	9	18	0.79	0.37	0.01
Rank	42%	41%	34%	55%	69%	64%	35%	12%	19%	4%	10%	40%
Wts.	81	579	1003									
HERDBUILDER	76											
RANK	13%											
GRIDMASTER	48											
RANK	28%											
PROS	124											
RANK	9%											



## 141 BIEBER STOCKMARKET K395

BORN: 5/5/2022 REG: 4661921 100% AR 1A

PIE STOCKMAN 4051	ADG 3.21
<b>BIEBER CL STOCKMARKET E119</b>	WDA 3.27
BIEBER CLADELLE 475C	AScr 42
BIEBER DRIVEN C540	CE ***
<b>BIEBER EP BELGA 115F</b> AOD: 4	GROWTH Sc. G6
MPPA: 101 BIEBER EP BELGA 187D	EPD Data Generated 9/28/2023

	CED	BW	WW	YW	MILK	ME	HPG	CEM	STAY	MARB	REA	FAT
EPD	16	-3.0	80	134	28	15	10	11	7	0.80	0.58	0.05
Rank	11%	28%	3%	2%	28%	97%	73%	2%	99%	3%	2%	95%
Wts.	79	674	1189									
HERDBUILDER	9											
RANK	99%											
GRIDMASTER	77											
RANK	2%											
PROS	86											
RANK	61%											



## 142 BIEBER STOCKMARKET K427

BORN: 5/12/2022 REG: 4662025 100% AR 1A

PIE STOCKMAN 4051	ADG 3.14
<b>BIEBER CL STOCKMARKET E119</b>	WDA 3.28
BIEBER CLADELLE 475C	AScr 37.23
LSF SRR TRIUMPH 3100A	CE **
<b>BIEBER ENCHANTRESS 373D</b> AOD: 6	GROWTH Sc. G5
MPPA: 101 BIEBER ENCHANTRESS 354X	EPD Data Generated 9/28/2023

	CED	BW	WW	YW	MILK	ME	HPG	CEM	STAY	MARB	REA	FAT
EPD	13	-2.6	70	120	26	3	6	8	13	0.96	0.41	0.03
Rank	48%	34%	18%	9%	44%	48%	99%	24%	79%	1%	7%	76%
Wts.	91	672	1175									
HERDBUILDER	36											
RANK	84%											
GRIDMASTER	79											
RANK	2%											
PROS	115											
RANK	17%											





# AGE-ADVANTAGED BULLS

143

**BIEBER ATOMIC K546**

BORN: 5/11/2022

REG: 4682405

100% AR 1A

ANDRAS FUSION R236

**BIEBER CL ATOMIC C218**

BIEBER DATELINE 308Y

BIEBER CL STOCKMARKET E119

**BIEBER GALLEE 202H** AOD: 2

MPPA:

BIEBER GALLEE 167E

ADG 2.21 ET  
WDA 2.66 ET  
ASCR 36.19  
CE \*\*\*  
GROWTH SC. G5

EPD Data Generated 9/28/2023

	CED	BW	WW	YW	MILK	ME	HPG	CEM	STAY	MARB	REA	FAT
EPD	16	-1.4	69	116	28	7	7	11	10	0.73	0.03	0.05
Rank	13%	59%	22%	14%	32%	75%	98%	2%	94%	6%	72%	98%
Wts.	70	633	987									
HERDBUILDER	20											
RANK	97%											
GRIDMASTER	43											
RANK	38%											
PROS	63											
RANK	90%											



144

**BIEBER CL ENERGIZE K536**

BORN: 5/6/2022

REG: 4684707

100% AR 1A

BIEBER CL ATOMIC C218

**BIEBER CL ENERGIZE F121**

BIEBER CLADELLE 575D

ANDRAS FUSION R236

**BIEBER CL ADELLE 475C** AOD: 7

MPPA: 100

BIEBER ADELLE 297Y

ADG 2.41 ET  
WDA 2.49 ET  
ASCR 33.53  
CE \*\*\*  
GROWTH SC. G3

EPD Data Generated 9/28/2023

	CED	BW	WW	YW	MILK	ME	HPG	CEM	STAY	MARB	REA	FAT
EPD	16	-4.1	53	85	27	11	9	8	16	0.67	0.20	0.02
Rank	14%	13%	76%	75%	37%	91%	92%	27%	39%	9%	34%	46%
Wts.	72	509	895									
HERDBUILDER	43											
RANK	74%											
GRIDMASTER	52											
RANK	22%											
PROS	94											
RANK	47%											



This lot is a maternal brother to Bieber CL Stockmarket E119.

145

**BIEBER RISE-N-SHINE K376**

BORN: 4/22/2022

REG: 4621467

100% AR 1A

WFL PROFITMAKER E7030

**SCHULER RISE-N-SHINE 9986**

SOR GARNET DBL DSGN 2677Z

BIEBER RREDSTAKEOUT 305A

**BIEBER DAPHINE 176E** AOD: 5

MPPA: 92

BIEBER DAPHINE 118C

ADG 1.91  
WDA 2.54  
ASCR 32.58  
CE \*  
GROWTH SC. G3

EPD Data Generated 9/28/2023

	CED	BW	WW	YW	MILK	ME	HPG	CEM	STAY	MARB	REA	FAT
EPD	13	-4.7	57	84	27	-6	13	7	19	0.36	0.22	0.00
Rank	42%	8%	62%	77%	39%	16%	25%	44%	9%	63%	30%	13%
Wts.	111	651	957									
HERDBUILDER	92											
RANK	3%											
GRIDMASTER	24											
RANK	77%											
PROS	116											
RANK	16%											



146

**BIEBER STOCKMARKET K377**

BORN: 4/28/2022

REG: 4661851

100% AR 1A

PIE STOCKMAN 4051

**BIEBER CL STOCKMARKET E119**

BIEBER CLADELLE 475C

BIEBER HARD DRIVE Y120

**BIEBER PRIDE 513G** AOD: 3

MPPA: 97

BIEBER PRIDE 223Z

ADG 3.39  
WDA 3.02  
ASCR 36.27  
CE \*\*\*  
GROWTH SC. G4

EPD Data Generated 9/28/2023

	CED	BW	WW	YW	MILK	ME	HPG	CEM	STAY	MARB	REA	FAT
EPD	24	-8.0	64	108	24	7	9	14	14	1.13	0.06	0.05
Rank	1%	1%	36%	27%	65%	73%	86%	1%	74%	1%	65%	97%
Wts.	54	557	1101									
HERDBUILDER	50											
RANK	61%											
GRIDMASTER	73											
RANK	4%											
PROS	123											
RANK	11%											



147

**BIEBER BLUE CHIP K396**

BORN: 5/6/2022

REG: 4661927

100% AR 1A

BIEBER CL STOCKMARKET E119

**BIEBER BLUE CHIP H302**

BIEBER ROSE 162C

BIEBER HARD DRIVE Y120

**BIEBER SUSAN 271E** AOD: 5

MPPA: 97

BIEBER SUSAN 171Z

ADG 2.81  
WDA 3.02  
ASCR 39.53  
CE \*\*  
GROWTH SC. G4

EPD Data Generated 9/28/2023

	CED	BW	WW	YW	MILK	ME	HPG	CEM	STAY	MARB	REA	FAT
EPD	15	-5.2	64	98	26	6	10	8	14	0.84	0.43	0.04
Rank	25%	5%	38%	49%	45%	67%	69%	24%	71%	2%	6%	87%
Wts.	91	646	1097									
HERDBUILDER	44											
RANK	71%											
GRIDMASTER	60											
RANK	12%											
PROS	105											
RANK	30%											





# AGE-ADVANTAGED BULLS

## 148 BIEBER CL HIGH DENSITY K425

BORN: 5/11/2022 REG: 4661841 100% AR 1A

BIEBER HARD DRIVE Y120	ADG 2.68
<b>BIEBER HIGH DENSITY H558</b>	WDA 2.92
BIEBER ENCHANTRESS 359B	AScr 39.19
BIEBER ROLLIN DEEP Y118	CE *
<b>BIEBER CL ET MISS 402D</b> AOD: 6	GROWTH Sc. G6
MPPA: 107 BIEBER ET MISS 130Z	EPD Data Generated 9/28/2023

	CED	BW	WW	YW	MILK	ME	HPG	CEM	STAY	MARB	REA	FAT
EPD	9	-0.4	82	130	26	15	14	6	15	0.46	0.37	0.04
Rank	91%	77%	2%	3%	44%	97%	13%	79%	53%	38%	10%	93%
Wts.		86	631	1059								
HERDBUILDER	49											
RANK	63%											
GRIDMASTER	25											
RANK	76%											
PROS	74											
RANK	79%											



## 149 BIEBER MR COMPLETE K498

BORN: 6/6/2022 REG: 4662257 100% AR 1A

KJL/CLZB COMPLETE 7000E	ADG 2.89
<b>ALC MR COMPLETE H41</b>	WDA 3.02
PELTON MISS KENDRA X121	AScr 38.04
BIEBER FOREFRONT B281	CE *
<b>BIEBER ADELLE 172F</b> AOD: 4	GROWTH Sc. G5
MPPA: 105 BIEBER ADELLE 609D	EPD Data Generated 9/28/2023

	CED	BW	WW	YW	MILK	ME	HPG	CEM	STAY	MARB	REA	FAT
EPD	9	-1.1	68	108	28	5	13	5	18	0.76	-0.02	0.03
Rank	89%	64%	22%	26%	24%	58%	27%	91%	14%	5%	81%	77%
Wts.		100	604	1067								
HERDBUILDER	68											
RANK	24%											
GRIDMASTER	51											
RANK	23%											
PROS	120											
RANK	13%											



## 150 BIEBER ENERGIZE K460

BORN: 5/25/2022 REG: 4662125 100% AR 1A

BIEBER CLATOMIC C218	ADG 2.85
<b>BIEBER CL ENERGIZE F121</b>	WDA 3.06
BIEBER CLADELLE 575D	AScr 38.65
BIEBER LB MITIGATOR C314	CE *
<b>BIEBER ROSE 160F</b> AOD: 4	GROWTH Sc. G6
MPPA: 102 BIEBER ROSE 175D	EPD Data Generated 9/28/2023

	CED	BW	WW	YW	MILK	ME	HPG	CEM	STAY	MARB	REA	FAT
EPD	12	0.2	80	138	29	21	10	7	8	0.69	0.21	-0.01
Rank	62%	85%	3%	1%	21%	99%	75%	48%	99%	8%	32%	5%
Wts.		96	651	1108								
HERDBUILDER	-10											
RANK	99%											
GRIDMASTER	82											
RANK	1%											
PROS	72											
RANK	81%											







# AGE-ADVANTAGED BULLS

## 151

## BIEBER CL WARRANT K492

BORN: 6/2/2022 REG: 4661845 100% AR 1A

9 MILE FRANCHISE 6305	ADG 2.89
<b>BIEBER WARRANT H520</b>	WDA 2.91
BIEBER ROSE 520F	ASCR 37.41
BIEBER LB MITIGATOR C314	CE ***
<b>BIEBER CL DATELINE 535F</b> AOD: 4	GROWTH Sc. G3
MPPA: 96 BIEBER DATELINE 308Y	EPD Data Generated 9/28/2023

	CED	BW	WW	YW	MILK	ME	HPG	CEM	STAY	MARB	REA	FAT
EPD	16	-4.0	57	94	32	6	13	10	15	0.31	0.40	0.02
Rank	15%	14%	63%	56%	6%	64%	18%	8%	60%	75%	8%	62%
Wts.		79	565	1029								

HERDBUILDER	61	GRIDMASTER	26	PROS	88
RANK	37%	RANK	73%	RANK	58%



## 152

## BIEBER STOCKMARKET K485

BORN: 6/1/2022 REG: 4662207 100% AR 1A

PIE STOCKMAN 4051	ADG 2.84
<b>BIEBER CL STOCKMARKET E119</b>	WDA 2.8
BIEBER CLADELLE 475C	ASCR 37.87
BIEBER SPARTACUS A193	CE ***
<b>BIEBER TILLY 163E</b> AOD: 5	GROWTH Sc. G4
MPPA: 93 BIEBER TILLY 140C	EPD Data Generated 9/28/2023

	CED	BW	WW	YW	MILK	ME	HPG	CEM	STAY	MARB	REA	FAT
EPD	20	-6.3	64	105	23	4	8	12	15	0.92	0.06	0.06
Rank	1%	2%	37%	33%	74%	52%	97%	1%	61%	1%	65%	98%
Wts.		70	514	969								

HERDBUILDER	53	GRIDMASTER	60	PROS	113
RANK	54%	RANK	12%	RANK	20%



## 153

## BIEBER KIRKLAND K486

BORN: 6/1/2022 REG: 4662213 100% AR 1A

HXC 5545C	ADG 2.64
<b>KJL/CLZB KIRKLAND 8003F</b>	WDA 2.95
HXC 107Y	ASCR 35.87
BIEBER LB MITIGATOR C314	CE *
<b>BIEBER PRIMROSE 600E</b> AOD: 5	GROWTH Sc. G4
MPPA: 101 BIEBER PRIMROSE 196Y	EPD Data Generated 9/28/2023

	CED	BW	WW	YW	MILK	ME	HPG	CEM	STAY	MARB	REA	FAT
EPD	7	-0.2	64	99	26	7	14	3	14	0.30	0.22	0.00
Rank	97%	80%	36%	46%	51%	75%	9%	97%	67%	77%	30%	22%
Wts.		100	645	1067								

HERDBUILDER	33	GRIDMASTER	14	PROS	47
RANK	88%	RANK	91%	RANK	97%





# AGE-ADVANTAGED BULLS

154

BIEBER KIRKLAND K487

BORN: 6/1/2022 REG: 4662215 100% AR 1A

HXC 5545C	ADG 2.55
KJL/CLZB KIRKLAND 8003F	WDA 2.89
HXC 107Y	AScr 36.87
BIEBER HARD DRIVE Y120	CE ***
BIEBER PRIMROSE 142C AOD: 7	GROWTH Sc. G4
MPPA: 101 BIEBER PRIMROSE 479A	EPD Data Generated 9/28/2023

EPD	CED	BW	WW	YW	MILK	ME	HPG	CEM	STAY	MARB	REA	FAT
Rank	16	-4.0	62	100	24	2	13	8	12	0.52	0.12	0.00
Wts.	13%	14%	43%	44%	69%	45%	28%	31%	85%	26%	51%	22%
		79	642	1050								
HERDBUILDER	39	GridMASTER	40	ProS	79							
RANK	80%	RANK	45%	RANK	72%							



155

BIEBER DC STOCKMARKET K444

BORN: 5/17/2022 REG: 4661837 100% AR 1A

PIE STOCKMAN 4051	ADG 3.41
BIEBER CL STOCKMARKET E119	WDA 3.37
BIEBER CLADELLE 475C	AScr 36.39
BIEBER HARD DRIVE Y120	CE *
BIEBER GOLDIE 290D AOD: 6	GROWTH Sc. G6
MPPA: 101 BIEBER GOLDIE 421Z	EPD Data Generated 9/28/2023

EPD	CED	BW	WW	YW	MILK	ME	HPG	CEM	STAY	MARB	REA	FAT
Rank	11	-0.1	79	135	24	16	9	7	12	1.08	0.41	0.02
Wts.	77%	81%	4%	2%	64%	98%	91%	61%	83%	1%	7%	47%
		107	630	1176								
HERDBUILDER	20	GridMASTER	84	ProS	104							
RANK	96%	RANK	1%	RANK	31%							



156

BIEBER STOCKMARKET K386

BORN: 5/3/2022 REG: 4661881 100% AR 1A

PIE STOCKMAN 4051	ADG 3.14
BIEBER CL STOCKMARKET E119	WDA 2.94
BIEBER CLADELLE 475C	AScr 38.94
PIE STOCKMAN 4051	CE ***
BIEBER ROSE 520G AOD: 3	GROWTH Sc. G5
MPPA: 96 BIEBER ROSE 475A	EPD Data Generated 9/28/2023

EPD	CED	BW	WW	YW	MILK	ME	HPG	CEM	STAY	MARB	REA	FAT
Rank	18	-6.8	67	106	26	8	7	12	15	0.92	0.36	0.05
Wts.	3%	1%	28%	30%	50%	77%	99%	1%	61%	1%	11%	97%
		71	565	1069								
HERDBUILDER	48	GridMASTER	64	ProS	112							
RANK	64%	RANK	8%	RANK	20%							



157

BIEBER HIGH DENSITY K419

BORN: 5/11/2022 REG: 4662013 100% AR 1A

BIEBER HARD DRIVE Y120	ADG 2.54
BIEBER HIGH DENSITY H558	WDA 3.06
BIEBER ENCHANTRESS 359B	AScr 34.19
LSF SRR TRIUMPH 3100A	CE *
BIEBER ROSE 234D AOD: 6	GROWTH Sc. G6
MPPA: 106 BIEBER ROSE 434B	EPD Data Generated 9/28/2023

EPD	CED	BW	WW	YW	MILK	ME	HPG	CEM	STAY	MARB	REA	FAT
Rank	7	1.6	85	129	27	22	12	3	14	0.70	0.37	0.00
Wts.	98%	96%	1%	4%	34%	99%	33%	97%	70%	7%	10%	9%
		100	729	1135								
HERDBUILDER	21	GridMASTER	47	ProS	68							
RANK	96%	RANK	29%	RANK	86%							



158

BIEBER CL ENERGIZE K391

BORN: 5/3/2022 REG: 4661839 100% AR 1A

BIEBER CLATOMIC C218	ADG 2.36
BIEBER CL ENERGIZE F121	WDA 2.56
BIEBER CLADELLE 575D	AScr 38.94
BIEBER HARD DRIVE E640	CE ***
BIEBER CL DATELINE 430H AOD: 2	GROWTH Sc. G4
MPPA: 102 BIEBER CL DATELINE 535F	EPD Data Generated 9/28/2023

EPD	CED	BW	WW	YW	MILK	ME	HPG	CEM	STAY	MARB	REA	FAT
Rank	17	-2.2	64	103	30	11	13	8	13	0.53	0.32	0.01
Wts.	5%	43%	37%	36%	15%	90%	26%	22%	77%	25%	15%	33%
		80	625	1005								
HERDBUILDER	37	GridMASTER	47	ProS	84							
RANK	83%	RANK	29%	RANK	64%							



159

BIEBER ROLLIN DEEP K550

BORN: 5/12/2022 REG: 4660339 100% AR 1A

BIEBER ROOSEVELT W384	ADG 2.59	ET
BIEBER ROLLIN DEEP Y118	WDA 2.55	ET
BIEBER TILLY 399W	AScr 36.23	
BIEBER ROMERO 9136	CE **	
BIEBER ROSE 246U AOD: 14	GROWTH Sc. G4	
MPPA: 107 BIEBER ROSE 7933	EPD Data Generated 9/28/2023	

EPD	CED	BW	WW	YW	MILK	ME	HPG	CEM	STAY	MARB	REA	FAT
Rank	10	-0.6	61	101	27	9	14	8	22	0.37	0.23	0.07
Wts.	84%	74%	47%	42%	41%	81%	9%	29%	1%	61%	28%	99%
		86	460	874								
HERDBUILDER	99	GridMASTER	13	ProS	112							
RANK	1%	RANK	92%	RANK	21%							





# AGE-ADVANTAGED BULLS

## 160 BIEBER GATE KEEPER K473

BORN: 5/27/2022 REG: 4662161 100% AR 1A

BADLANDS CINCHED 521C											
TJS GATE KEEPER F106						ADG 3.12					
TJS LARKABA B137						WDA 3.15					
BIEBER RIGHT ON F633						AScr 29.71					
BIEBER JOAN 427H AOD: 2						CE *					
MPPA: 106 BIEBER JOAN 545D						GROWTH Sc. G5					
EPD Data Generated 9/28/2023											

	CED	BW	WW	YW	MILK	ME	HPG	CEM	STAY	MARB	REA	FAT
EPD	11	-2.1	71	109	28	-3	15	5	15	0.19	-0.10	0.03
Rank	79%	45%	16%	24%	25%	22%	6%	89%	56%	95%	92%	67%
Wts.		88	684	1185								
HERDBUILDER 66 GRIDMASTER 13 PROS 78												
RANK 29% RANK 92% RANK 73%												



## 161 BIEBER GATE KEEPER K481

BORN: 5/31/2022 REG: 4662189 100% AR 1A

BADLANDS CINCHED 521C			
TJS GATE KEEPER F106		ADG 2.53	
TJS LARKABA B137		WDA 2.6	
BIEBER LET'S ROLL B563		AScr 37.84	
BIEBER ROSE 594H AOD: 2		CE *	
MPPA: 98 BIEBER ROSE 178C		GROWTH Sc. G3	
		EPD Data Generated 9/28/2023	

	CED	BW	WW	YW	MILK	ME	HPG	CEM	STAY	MARB	REA	FAT
EPD	11	-2.5	53	79	26	-7	14	6	20	0.44	-0.14	0.02
Rank	70%	37%	77%	83%	49%	14%	14%	79%	4%	42%	95%	51%
Wts.		92	575	982								
HERDBUILDER 93 GRIDMASTER 24 PROS 118												
RANK 3% RANK 76% RANK 15%												



## 162 BIEBER GATE KEEPER K467

BORN: 5/26/2022 REG: 4662145 100% AR 1A

BADLANDS CINCHED 521C			
TJS GATE KEEPER F106		ADG	3.07
TJS LARKABA B137		WDA	2.84
BIEBER CL STOCKMAN E116		AScr	35.68
BIEBER PRIMROSE 115H AOD: 2		CE	***
MPPA: 96	BIEBER PRIMROSE 385F	GROWTH Sc.	G5
		EPD Data Generated 9/28/2023	

	CED	BW	WW	YW	MILK	ME	HPG	CEM	STAY	MARB	REA	FAT
EPD	18	-4.2	67	110	27	0	11	9	16	0.41	-0.10	0.03
Rank	2%	12%	26%	23%	34%	33%	50%	11%	37%	50%	92%	79%
Wts.		58	545	1038								
HERDBUILDER 70 GRIDMASTER 39 PROS 109												
RANK 21% RANK 47% RANK 25%												



## 163 BIEBER WARRANT K505

BORN: 6/13/2022 REG: 4662271 100% AR 1A

9 MILE FRANCHISE 6305			
BIEBER WARRANT H520		ADG 2.57	
BIEBER ROSE 520F		WDA 2.77	
BIEBER SPARTACUS A193		AScr 39.26	
BIEBER PRIMROSE 151D AOD: 6		CE ***	
MPPA: 96 BIEBER PRIMROSE 464B		GROWTH Sc. G3	
		EPD Data Generated 9/28/2023	

	CED	BW	WW	YW	MILK	ME	HPG	CEM	STAY	MARB	REA	FAT
EPD	15	-6.5	53	85	30	5	9	11	17	0.59	0.28	0.04
Rank	18%	1%	76%	75%	16%	60%	88%	3%	25%	17%	20%	83%
Wts.		78	570	981								
HERDBUILDER 63 GRIDMASTER 37 PROS 100												
RANK 33% RANK 51% RANK 38%												



## 164 BIEBER ENERGIZE K387

BORN: 5/3/2022 REG: 4661883 100% AR 1A

BIEBER CL ATOMIC C218		ADG	1.93
BIEBER CL ENERGIZE F121		WDA	2.27
BIEBER CLADELLE 575D		ASCr	35.94
BIEBER CL STOCKMARKET E119		CE	***
BIEBER LASS 101H AOD: 2		GROWTH Sc.	G4
MPPA: 100	BIEBER LASS 293F	EPD Data Generated 9/28/2023	

	CED	BW	WW	YW	MILK	ME	HPG	CEM	STAY	MARB	REA	FAT
EPD	19	-4.9	64	108	28	11	11	10	13	0.69	0.22	0.01
Rank	2%	7%	36%	26%	32%	89%	61%	7%	76%	8%	30%	40%
Wts.		73	595	906								
HERDBUILDER 38 GRIDMASTER 54 PROS 92												
RANK 82% RANK 19% RANK 51%												



*Thank You*

FOR SUPPORTING AND ATTENDING THE  
BIEBER FEVER FALL FEMALE AND BULL  
SALE. IF YOU HAVE ANY QUESTIONS, YOU  
CAN CONTACT US AT (605) 439-3628.



# COMMERCIAL HEIFERS

## *Pearl Creek Cattle Company of Cavour, SD*

40 Head of Commercial Heifer Lots

Shawn Miner (605) 830-2750 or Donnie Miner (605) 354-7070

These are home raised heifers that have been bull bred to sons of Bieber Forefront B281 and WFL Profitmaker E7030. The bulls were turned out June 5, and the heifers will calve for 35 days from March 1. These heifers have been on our sale for several years and have become widely known as having great disposition and very good maternal instincts. The Miner's have been using Bieber Red Angus bulls since 1999.

These heifers will be ultrasounded for calving date, sorted into uniform calving groups, and sold in sets of five or more. Five heifers will be tagged with the first lot and consecutively with every five after that. They will sell in lot tag order. Each group will be tagged in a series, so the winning bidder will have the right to buy the first five and as many as they want within that lot in increments of five at the sale price. Video will be available through our website prior to the sale.



The Miner Family





# COMMERCIAL HEIFERS

## *Rick and Shelly Ammann of Wilmot, SD*

45 Head of Commercial Heifer Lots

Rick Ammann (605) 949-1697

These are home raised heifers that have been AI bred on June 14 and 15 to Bieber CL Atomic C218. They were then turned out with one son of Bieber CL Stockmarket E119 and one maternal brother to Stockmarket sired by Bieber Let's Roll B563. The bulls were in from June 17 to July 18. The heifers will calve for 30 days from March 5. The steer calf mates to these heifers have topped the Superior Sale in Sheridan, WY for several years and have averaged around 615 pounds with delivery the first week of November, or 715 pounds after being backgrounded for 50 days for delivery the second week in December. The Ammann's have been using Bieber Red Angus bulls since 1991 and Red Angus bulls since 1978. They received GridMaster awards in 2018 and 2019.

These heifers will be ultrasounded for calving date, sorted into uniform calving groups, and sold in sets of five or more. Five heifers will be tagged with the first lot and consecutively with every five after that. They will sell in lot tag order. Each group will be tagged in a series, so the winning bidder will have the right to buy the first five and as many as they want within that lot in increments of five at the sale price. Video will be available through our website prior to the sale.



Rick and Shelly Ammann





## REFERENCE SIRES

This group of sires displays the foundation of our program and provides the elite Red Angus genetics that our cattle are famous for. We list the sires that have the most progeny in the sale, as well as those that have been mated to the most females in this offering.





# REFERENCE SIRES



## BIEBER CL STOCKMARKET E119

Stockmarket has hit the breed with a pedigree that provides an opportunity to make multi-trait improvement and add phenotype. He offers calving ease with great performance and excellent carcass. We've really liked what we see in the phenotype of the daughters. They have a lot of brood cow characteristics with good udders. His progeny are long bodied with a lot of rib and smooth hoof shape. Stockmarket was first in registrations at the Red Angus Association last year and was the first Red Angus bull to break the top 10 of beef bulls at Select Sires - and he did it two years in a row. This sire and his progeny do a lot right! Look for the Stockmarket pedigree to be in about every sale you go to this fall. His dam was one of the best cows to walk our place.

	CED	BW	WW	YW	MILK	ME	HPG	CEM	STAY	MARB	REA	FAT
EPD	16	-5.0	75	128	25	11	6	11	10	1.23	0.36	0.08
ACC	85	94	92	92	66	49	63	64	46	67	63	53
Rank	13%	8%	14%	9%	53%	85%	98%	3%	93%	1%	17%	99%
	HERDBUILDER 16		GRIDMASTER 80		PROS 96							
	RANK 93%		RANK 4%		RANK 41%							



## BIEBER HIGH DENSITY H558

High Density is a Hard Drive X Rollin Deep bull that epitomizes the stout, high-capacity body type that both sires are well known for. His dam is out of a very productive Basin Hobo 0545 daughter that came to us from the Basin Program. His dam, Enchantress 359B, sold in our 2022 Fall Sale going to Drew Edleman with Edleman Cattle Company of SD to make profitable Lim-Flex progeny. High Density H558 might be one of the best Hard Drive sons we have ever produced. His progeny look good, and we are excited to get them in production. We are looking forward to seeing this bull live up to his potential and move our program forward in the years to come.

	CED	BW	WW	YW	MILK	ME	HPG	CEM	STAY	MARB	REA	FAT
EPD	9	1.4	91	141	22	20	15	4	13	0.62	0.90	0.01
ACC	57	74	67	70	24	22	33	33	38	50	49	41
Rank	88%	92%	2%	3%	76%	98%	14%	92%	70%	17%	2%	38%
	HERDBUILDER 30		GRIDMASTER 46		PROS 76							
	RANK 83%		RANK 33%		RANK 68%							





# REFERENCE SIRES

## BIEBER CL ENERGIZE F121

Energize has been attracting attention the past few years. He leads the sire lineup at ABS and is likely to be a leasing sire in the breed. He was one of the most talked about sires - red or black - at Origen in MT several summers ago. Energize blends an outstanding growth curve with outstanding GridMaster values. His progeny have continued to impress us every step of the way. His sire Atomic's daughters have been impressive and we have no doubt with the Adelle cowline in his pedigree the Energize daughters will continue to impress. He has a lot of body and dimension and has a bold spring of rib and great foot structure. His dam Adelle 575D sold to Mathias Ranch and is now being flushed extensively. We expect great things from this sire and his recent progeny are just the front end of a lot of great cattle to come.



Bieber CL  
Energize  
F121



	CED	BW	WW	YW	MILK	ME	HPG	CEM	STAY	MARB	REA	FAT
EPD	18	-5.5	63	108	31	11	12	7	12	0.58	0.37	0.02
ACC	82	93	90	89	47	48	36	46	38	62	64	48
Rank	7%	5%	46%	33%	12%	85%	40%	54%	83%	22%	16%	60%
	HERDBUILDER		13	GRIDMASTER		60	PROS		73			
	RANK		94%	RANK		16%	RANK		70%			



## BIEBER FLASHDRIVE G266

FlashDrive G266 sold in our 2020 Performance Bull Sale to a top program out of Kansas - Minimum Cattle. He ranked high in the \$Profit system and with his breed leading marbling data, we decided to sample him. His dam has a great record and is an exceptional Forefront daughter. We really like his progeny thus far and there are a lot of great sons and daughters to find in this offering. Don't miss out on a great sire.

*Pictured at right, a Flashdrive G266 son that sold as Lot 8 in our 2023 Performance Yearling Bull Sale in March.*

	CED	BW	WW	YW	MILK	ME	HPG	CEM	STAY	MARB	REA	FAT
EPD	6	3.5	92	155	30	16	18	5	12	1.06	0.61	0.01
ACC	58	74	68	69	20	19	25	28	32	46	46	38
Rank	97%	98%	1%	1%	19%	96%	3%	82%	80%	1%	5%	29%
	HERDBUILDER		40	GRIDMASTER		108	PROS		148			
	RANK		71%	RANK		1%	RANK		4%			





# REFERENCE SIRES

## BIEBER ROLLIN DEEP Y118

Rollin Deep Y118 has been a staple in our program for many years and is one of those rare sires that truly elevates the breed. He was an impressive individual from the start, posting outstanding data with one of the deepest phenotypes we had ever seen on the ranch. His progeny have continued to prove impressive even now, and our customers found that his sons complimented their programs with added muscle, great data, and superior style. He has produced many great sons and herdsires over his tenure. This year's offering has a lot of great matrons and some bulls out of our ET program sired by this legend in the breed.



	CED	BW	WW	YW	MILK	ME	HPG	CEM	STAY	MARB	REA	FAT
EPD	9	0.0	72	116	28	10	16	7	17	0.41	0.35	0.07
ACC	78	92	90	90	84	57	85	79	71	73	74	66
Rank	85%	78%	19%	20%	32%	83%	6%	42%	32%	50%	18%	99%
HERDBUILDER	72		GRIDMASTER		32		PROS		105		GGP	
RANK	20%		RANK		55%		RANK		30%			



## BIEBER HARD DRIVE Y120

Hard Drive has been the pinnacle of our program in past years and for good reason. His data hits a lot of sweet spots across the board and his daughters are outstanding. We often get visitors that marvel at his daughters and we understand why. We have always tried to keep mature size in check and we feel that Hard Drive and Rollin Deep, along with their progeny, do a great job of that. Hard Drive is a very impressive sire all around and has many sons working in our own herd as well as the herds of some of our best customers in the industry. Many daughters sell in this offering and you won't be disappointed in any of them.

	CED	BW	WW	YW	MILK	ME	HPG	CEM	STAY	MARB	REA	FAT
EPD	13	-1.5	82	130	23	17	15	5	12	0.69	0.59	-0.03
ACC	81	93	91	91	85	57	82	80	75	71	69	61
Rank	43%	55%	6%	7%	69%	96%	12%	79%	85%	11%	6%	3%
HERDBUILDER	23		GRIDMASTER		75		PROS		98		GGP	
RANK	88%		RANK		6%		RANK		39%			



# REFERENCE SIRES

---

## NATURAL SERVICE SIRES

The below list of sires are those that were used natural service on the females in this offering. We have included their name and registration number for your reference when determining calf parentage.

*KJL/CLZB KIRKLAND 8003F* Registration #3968936

*HXC BLUE COLLAR 8820F* Registration #4015680

*PIE FRANCHISE 9031* Registration #4210530

*LSF SRR BLANK CHECK 0162H* Registration #4275805

*LSF SRR MADDUX 0164H* Registration #4275809

*ALC MR COMPLETE H41* Registration #4279321

*PIE JUST RIGHT 005* Registration #4388939

*LSF SRR ENDOWMENT 1011J* Registration #4455581

*LSF SRR COMPONENT 1112J* Registration #4455779

*PIE HARD DRIVE 1227* Registration #4543553

*PIE ASSET 1276* Registration #4543565

*BROWN PRIORITY J428* Registration #4569587





# Red Angus Guide to EPDS and Indexes

**ProS...** Profitability and Sustainability is an all-purpose index that predicts average economic differences in all segments in the beef supply chain. This index is a combination of the breeding objectives modeled in the HerdBuilder and GridMaster selection indexes. In this index, replacement heifers are retained from within the herd and all remaining progeny are fed out to slaughter and sold on a quality-based grid. Traits included in this index include calving ease, growth, HPG, STAY, Mature Weight, Dry Matter Intake and carcass traits. The resulting index is expressed in dollars per head born (Index/High Value).

**HB .....** HerdBuilder is a maternal selection index that predicts the economic differences of animals for traits that are important from conception through weaning. Expressed as dollars per head born, HB is calculated based on the scenario that bulls are mated to heifers and cows, replacement heifers are retained and all remaining progeny are marketed at weaning. Traits included in the HB index include Calving Ease Direct, Calving Ease Maternal, Weaning Weight, Milk, Mature Weight, Heifer Pregnancy and Stayability (Index/High Value).

**GM.....** GridMaster is a selection index that predicts the average economic difference of non-replacement calves through the post-weaning phase of production. GM places selection pressure on growth, feedyard performance and carcass traits. Expressed as dollars per head born, GM is calculated based on the scenario that progeny are fed out to slaughter and marketed on a quality-based carcass grid. Traits included in GM include Average Daily Gain, Carcass Weight, Dry Matter Intake, Marbling, Back Fat and Rib Eye Area (Index/High Value).

**CED .....** Calving Ease Direct predicts differences in the percent of calves born unassisted out of 2-year-old dams. (Percent/High Value)

**BW .....** Birth Weight predicts differences in actual birth weight of progeny. (Pounds/Low Value)

**WW .....** Weaning Weight predicts differences in 205-day weaning weight. (Pounds/High Value)

**YW .....** Yearling Weight predicts differences in 365-day yearling weight. (Pounds/High Value)

**ADG .....** Average Daily Gain predicts differences in weight gain between 205 and 365 days of age. (Pounds/High Value)

**DMI .....** Dry Matter Intake predicts differences in daily feed intake as measured in a feedlot during the post-weaning period. (Pounds/Low Value)

**MILK .....** Milk predicts differences in weaning weight attributed to the milking ability of the animal's daughters. (Pounds/High Value)

**ME .....** Maintenance Energy predicts the difference in maintenance energy requirements. (Mcal per Month/Low Value)

**HPG .....** Heifer Pregnancy predicts differences in the percent of daughters who are able to conceive and calve at 2 years of age following exposure to breeding. (Percent/High Value)

**CEM .....** Calving Ease Maternal predicts differences in the percent of daughters who are able to calve unassisted as 2-year-old heifers. (Percent/High Value)

**STAY .....** Stayability predicts differences in the ability of an animals' retained daughters to remain productive in the herd – calve every year – through 6 years of age. (Percent/High Value)

**MARB .....** Marbling predicts differences in marbling score – amount of intramuscular fat measured at the 13th rib. (Marbling Score Units/High Value)

**YG .....** Yield Grade predicts differences in USDA Yield Grade, which is calculated using CW, REA and Fat. (Yield Grade Units/Low Value)

**CW .....** Carcass Weight predicts differences in actual hot carcass weight. (Pounds/High Value)

**REA .....** Ribeye Area predicts differences in square inches of ribeye area measured at the 13th rib. (Square Inches/High Value)

**FAT .....** Fat predicts differences in the depth of backfat measured between the 12th and 13th ribs. (Inches/Low Value)

## RED ANGUS

RANCH TESTED. RANCHER TRUSTED.

[RedAngus.org](http://RedAngus.org)





# PROFIT. REPEAT.

**Generate repeated profits with Red Angus bulls.**

Year after year, despite unpredictable market conditions, cattle producers see increased ROI on their Red Angus-sired calves that excel both in the yard and on the rail. Increase your profit potential with Red Angus genetics and experience the Red Angus advantage.

**Visit [RedAngus.org](http://RedAngus.org) for details on Red Angus marketing programs.**



**RED ANGUS**  
RANCH TESTED. RANCHER TRUSTED.



# Research Validates Red Angus as Most-Favored Female

**Ranchers across the country have long recognized the value of Red Angus females as the foundation of a profitable cowherd. Now, independent research validates those years of cattle production experience with tangible data proving the Red Angus heifer's worth.**

## Research Confirmation

Esther McCabe, et al., of Kansas State University, led a study that confirmed Red Angus are the most-favored female in the industry. McCabe and her team compiled five years' worth of pricing data from Superior Livestock Auction, comparing 13,804 lots of heifer calves totaling over 1.2 million head that sold in 116 video auctions.

The research team evaluated the effects of independent variables on the sale price of heifer calves that fell into six different breed composition groups: English, English crosses, English-Continental crosses, Black Angus-sired out of dams with no Brahman influence, Red Angus-sired out of dams with no Brahman influence, and Brahman-influenced.

They deduced that Red Angus-sired heifer calves bring \$5 to \$9 more per hundredweight than all other breed types.

## Rancher Trusted

While market research validates the price advantage of Red Angus heifers, ranchers have tested and trusted her worth on the range for years. Red Angus females are desirable as replacement heifers because they mature into productive mother cows that reward producers with extra dollars in their pockets on sale day.

Red Angus cows have gained ranchers' trust as a complete package through fertility, fleshing ability, good disposition, longevity and excellent overall production. They produce feeder calves that earn premiums in the yard and on the rail through docility, feed efficiency, conversion and carcass merit.

Over the years, stockmen have voted with their checkbooks, purchasing heifers they know will bring profitability to their ranching businesses – and Red Angus females are their most-favored choice. ■



*Independent research studying five years of Superior Livestock Auction data confirms the value of Red Angus replacement females.*

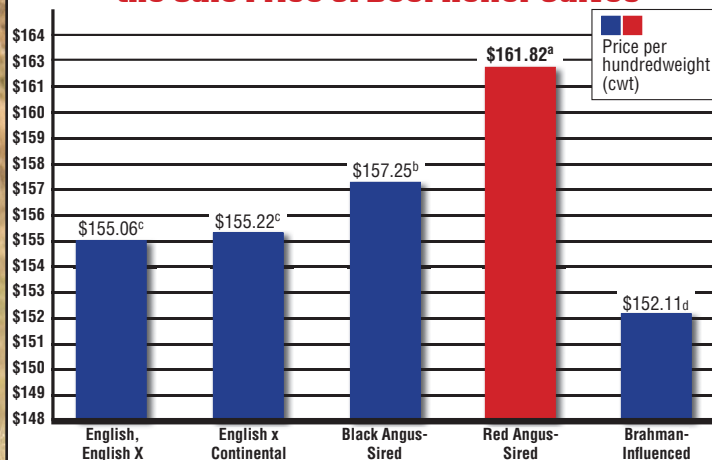
## Red Angus Stockyard

List or locate quality Red Angus replacement females at [stockyard.redangus.org](http://stockyard.redangus.org). Over 20,000 head of cattle are sold each year through the Red Angus Stockyard.

## FeMail

An electronic tool to help locate or market ranch-tested replacements. Market your open heifers, bred heifers or cows, or cow-calf pairs. FeMails are designed for offerings of 25 head or more to complement listings on the Red Angus Stockyard.

## Breed and Gender Interact to Affect the Sale Price of Beef Heifer Calves\*



\* McCabe, et al., 2016. Breed and gender interact to affect the sale price of beef calves sold through video auctions from 2010 through 2014. J. Animal Science, Volume 94, Supplement 2, pp 28.  
<sup>abcd</sup> Means with unlike superscripts differ (P<0.05).





# HOW TO READ THE DATA

## 1 BIEBER FOREFRONT J143

BORN: 1/21/2021 REG: 4464481 100% AR 1A

ANDRAS FUSION R236	ADG 4.11 135
BIEBER FOREFRONT B281	WDA 3.33 120
BIEBER LAURA 112W	AScr 37.36
BIEBER SPARTACUS A193	CE ***
BIEBER ADELLE 525G AOD: 2	GROWTH Sc. G6
MPPA: 104 BIEBER ADELLE 297Y	EPD Data Generated 1/25/2022

	CED	BW	WW	YW	MILK	ME	HPG	CEM	STAY	MARB	REA	FAT
EPD	15	-3.8	80	143	29	13	10	8	17	0.70	0.18	0.03
Rank	15%	16%	2%	1%	17%	95%	62%	27%	26%	5%	37%	68%
Wts.		65	659	1319								
Ratio		89	109	120								
HERDBUILDER	58				GRIDMASTER	86		PROS	144			
RANK	39%				RANK	1%		RANK	1%			

This lot offers excellent growth to any operation.

**1. Lot Number** - This is the lot number of the animal. Cattle will have a white tag that will correspond to that number. Generally cattle will sell in lot number order.

**2. Name** - This is the registered name of the animal. Generally we name bulls after the sire and females after the dam.

**3. Born** - This is the birth date of the animal.

**4. Reg** - This is the Registration number of the animal. All Red Angus animals can be looked up on the Red Angus website by going to the animal search page and using this registration number.

**5. Breed** - This area has the breed composition and category as determined by the Red Angus Association of America. Breed Codes are:

- AR = Red Angus
- SM = Simmental
- XX = Unknown

The Unknown cattle are largely cattle we weren't able to prove parentage on in the Durham herd. The unknown breed is either Simmental or Red Angus in the Durham foundation cattle.

**6. Category** - This is the category as defined by the Red Angus Association. Categories are:

- 1A = 100% Red Angus with no disqualifying features.
- 1B = 87% to 99.9% Red Angus with no disqualifying features.
- II = Equal to or greater than 87% up to and including 100% Angus blood content having one or more disqualifying features. Disqualifying Features include scurs or horns, ineligible white, black pigment, progeny of multiple sire groups, and missing birth date, or weaning weight and date.
- III = Less than 87% Angus blood content.

**7. Sire** - Sire of the animal.

**8. Paternal Grand Sire** - Sire of the Sire.

**9. Paternal Grand Dam** - Dam of the Sire.

**10. Dam** - Dam of the animal.

**11. Maternal Grand Sire** - Sire of the Dam.

**12. Maternal Grand Dam** - Dam of the Dam.

**13. MPPA** - Most Probable Producing Ability. An estimate of a cow's future productivity for a trait (such as progeny weaning weight ratio) based on her past productivity. For example, a cow's MPPA for weaning ratio is calculated from the cow's average progeny weaning ratio, the number of her progeny with weaning record, and the repeatability of weaning weight.

**14. AOD** - Age of Dam at the time of weaning.

**15. ADG** - Average Daily Gain. Measurement of daily body weight change over a specified period of time of an animal on a feed test.

**16. ADG Ratio** - Average Daily Gain Ratio. The ratio of the animal within its contemporary group. ET and Twins will be marked with a TW and ET. These animals have no contemporary group.

**17. WDA** - Weight Per Day of Age. Weight of an individual divided by days of age.

**18. WDA Ratio** - Weight Per Day of Age Ratio. Weight of an individual divided by days of age. ET and Twins will be marked with a TW and ET. These animals have no contemporary group.

**19. AScr** - Adjusted Scrotal Circumference. A measure of testes size obtained by measuring the distance around the testicles in the scrotum with a circular tape. Related to semen-producing capacity and is adjusted to Yearling age. Actual Scrotal Measurement are provided on a supplement sheet at the sale.

**20. CE** - Calving Ease Score. This is our recommendation for CE based upon the data and the pedigree.

\*\*\* = Use on heifers; expect less calving difficulty.

\*\* = Use on growthy heifers and cows. Expect moderate calving difficulty on heifers and very little on cows.

\* = Use on cows; expect calving difficulty on heifers and some to very little on cows.

**21. Growth Sc.** - Growth Score. This is our recommendation for growth based upon the data and the pedigree.

• G6 = Maximum growth rating.

• G5 = High growth rating.

• G4 = Moderately high growth rating.

• G3 = Average growth rating.

• G2 = Below average growth rating.

• G1 = Low growth rating.

**22. EPD Data Generated** - The date this EPD data was pulled from the Red Angus Association website.

**23. EPD** - Expected Progeny Difference. The difference in expected performance of future progeny of an individual, compared with expected performance of future progeny of an individual of average genetic merit in the base time frame for the genetic evaluation.

EPDs are estimated from phenotypic merit of an individual and all of its relatives and are estimates of one-half the breeding values. EPDs are generally reported in units of measurement for the trait (e.g. lb., in., etc.).

**acc** - Accuracy. A measure of the reliability of an EPD. Accuracy values are reported as decimal numbers between zero and one. Values closer to one indicate larger amounts of available information and greater certainty that a bull's EPDs will not change significantly as more progeny information becomes available. Bieber Red Angus reports the accuracy values for sires since they have high accuracies. EPDs are a more reliable estimate of performance than weight, ratios or other measurements.

**24. Rank** - This is the percentage rank of the EPD within the type of animal. Rank groups include Proven and Opportunity Sires, Active Dams, and Non Parent under Two Years of Age.

**25. Wts** - Weight. The weight for that trait in that column adjusted to a constant days of age by Red Angus Association and Beef Improvement standards.

**26. Ratio** - The ratio for that trait in that column within its contemporary group. ET and Twins will be marked with a

TW and ET and have no contemporary group.

**27. CED** - Calving Ease Direct. Predicts the probability of calves being born unassisted out of two-year-old heifers. Producers want live calves born unassisted. Selecting on actual birth weight is flawed; it is influenced by non-genetic factors such as nutrition and weather (ambient temperature). While BW EPD removes these non-genetic factors, Red Angus CED EPD is the best predictor of calving ease. The CED EPD includes variation in BW plus other influential genetic factors such as gestation length, calf shape, etc.

**28. Birth Weight EPD** - Predicts the difference, in pounds, for birth weight, and is also used in the calculation of the Calving Ease Direct (CED) EPD.

**29. BW** - Birth Weight. The actual weight in pounds at birth.

**30. Weaning Weight EPD** - Predicts the difference, in pounds, for weaning weight (adjusted to age of dam and a standard 205 days of age). This is an indicator of growth from birth to weaning.

**31. WW** - Weaning Weight. The 205 adjusted weight. This is an indicator of growth up to weaning.

**32. Yearling Weight EPD** - Predicts the expected difference, in pounds, for yearling weight (adjusted to a standard 365 days of age). This is an indicator of growth from birth to yearling.

**33. YW** - Yearling Weight. The 365 adjusted weight. This is a measure of growth from birth to yearling.

**34. Milk EPD** - Predicts the difference in maternal production of an individual animal's daughters as expressed by the weaning weight of their calves.

**35. ME EPD** - Maintenance Energy. Predicts the difference in daughters' maintenance energy requirements and is expressed in Mcal/Month. Recognizing that 70% of cowerd feed costs are burned up in maintaining weight and condition, Red Angus' ME EPD allows for the selection of bulls whose daughters will require less feed; thus, reducing cowerd expenses. Includes selection pressure for ME EPD to ensure feed costs don't get out of line when selection is made for greater performance and production. At Bieber Red Angus we collect a cow weight at weaning time to ensure greater accuracy of this EPD.

**36. HPG EPD** - Heifer Pregnancy. Predicts the probability of heifers conceiving to calve at two years of age. Many breeds offer genetic predictions of yearling bull scrotal circumference as an indicator of age of puberty. While puberty is a prerequisite, many factors influence pregnancy rate. Red Angus' HPG EPD offers a tool which selects for what is economically relevant to ranchers - pregnant heifers. At Bieber Red Angus we submit all heifer breeding data to ensure the accuracy of this EPD.

**37. CEM EPD** - Calving Ease Maternal. Predicts the probability of a given animal's daughters calving unassisted at two years of age. Replacement heifers should be able to calve on their own. Red Angus' CEM EPD offers the industry's most reliable prediction to address that concern.

It includes not only the predisposition for a female to calve unassisted, but also her contribution to her calf's traits that make it more likely to be born unassisted.

**38. STAY EPD** - Stayability. Predicts the probability of a bull's daughters remaining productive until at least six years of age. Why six? That's how long it takes a female to breakeven given all the expenses of development.

**39. MARB EPD** - Marbling. Predicts differences for carcass marbling score as expressed in marbling score units. Higher marbling scores are positively correlated with higher carcass quality grades.

**40. REA EPD** - Rib Eye Area. Predicts differences of carcass Rib Eye Area between the 12th and 13th rib. Increased Rib Eye Area has a beneficial effect on Yield Grade which also includes Carcass Weight and Fat Thickness.

**41. FAT EPD** - 12th Rib Fat Thickness. Predicts differences for carcass fat depth over the 12th rib, as expressed in inches. Increases in fat thickness have a detrimental effect on Yield Grade. Fat thickness measured in young seedstock may be an indicator of fleshing ability.

**42. HerdBuilder Index** - As the name indicates, implementation of the HerdBuilder Index will assist producers in building profitable herds. The HerdBuilder Index is built using the following production scenario:

- Red Angus bulls mated to cows and heifers (resulting progeny  $\frac{3}{4}$  Red Angus,  $\frac{1}{4}$  Simmental).
- Replacement heifers retained from within the herd.
- All remaining progeny sold on a quality-based carcass grid.

**43. GridMaster Index** - While Red Angus has traditionally been known as a superior maternal breed, those who have retained ownership in Red Angus calves know of their potential to excel in the feedyard and ultimately hang a premium carcass. The GridMaster Index is built using the following production scenario:

- Red Angus bulls mated to cows (resulting progeny  $\frac{3}{4}$  Red Angus,  $\frac{1}{4}$  Simmental)
- All progeny sold on a quality-based carcass grid

**44. ProS Index** - Profitability and Sustainability is an all-purpose index that predicts average economic differences in all segments in the beef supply chain. This index is a combination of the breeding objectives modeled in the HerdBuilder and GridMaster selection indexes. In this index, replacement heifers are retained from within the herd and all remaining progeny are fed out to slaughter and include on a quality-based grid. Traits included in this index include calving ease, growth, HPG, STAY, Mature Weight, Dry Matter Intake and carcass traits. The resulting index is expressed in dollars per head born (Index/High Value).

**45. Top Dollar** - A third party evaluation on growth and carcass traits of an animal. Lots with this logo rank in the top 25% of the breed for growth and carcass EPD traits.

**46. DNA** - The DNA test submitted on this animal for parentage and genomically enhanced EPDs.

**47. Footnote** - This is information we would like to point out about the lot. It may contain breeding information on bred cattle.



## What is Top Dollar Angus?

Top Dollar Angus is the beef industry's leading genetic verification and marketing assistance company for commercial feeder cattle. We focus exclusively on Angus- and Red Angus-influence cattle ranking in the Top 25% for growth and carcass traits.

Our focus on these traits is driven by the needs of our feeding partners. In today's marketplace, cattle feeders must know the cattle they buy will stay healthy, grow quickly and efficiently, while also delivering high-value carcass traits. Top Dollar Angus verifies cattle with Top 25% genetics, presenting feedlots with a product they can trust.

Our Top Dollar Angus seedstock partners provide bull buyers with the genetics to be successful in today's marketplace. Top Dollar Angus magnifies that success by connecting Top Dollar Angus feeder calves with our ever-growing network of feeding partners.

## Top Dollar Angus Genetics are Worth MORE to Cattle Feeders

Top Dollar Angus Sire Progeny Evaluated (head)	Yes 18	No 13	Difference
Carcass Weight* (lbs)	926	889	37
Marbling Score	668	562	106
Ribeye Area^ (sq. inches)	14.90	14.37	0.53
Backfat (inches)	0.76	0.72	0.04
Calculated Yield Grade	3.5	3.4	0.1
Value Per Head^	\$2,193.49	\$1,974.57	\$218.91

\*Sex and age constant ^Steer equivalent.

## How Do I Enroll?

Learning more about Top Dollar Angus Feeder Partnership enrollment is simple.

1. Contact a representative listed below via phone or email. Please share your phone number and email address.
2. Answer a few questions about your operation's background including bull suppliers and, if available, registration numbers on bulls used in your herd.
3. Submit any of the following for a free genetic evaluation.
  - **Registration Numbers** – A five- to seven-year history with more years preferred. Many seedstock breeders can help supply this information.
  - **Commercial DNA test** such as:  
Igentity Beef by Neogen  
GeneMax or Inherit by Zoetis
  - **Recent carcass data on your cattle**
4. Submit your information for review. After your evaluation, we will notify you about your cattle's qualifications and ranking or be able to advise you on adjustments and improvements you can make to qualify.

## What is the Cost?

Once a group of cattle qualifies and the producer chooses to use the Top Dollar Angus promotional program, the verification fee is calculated at the cost of \$4 per head marketed.



*Contact us  
for a free,  
no-obligation  
consultation!*

**Nate Smith**, General Manager  
(620) 546-4839 • [nate@topdollarangus.com](mailto:nate@topdollarangus.com)

**Kaytlin Hokanson** • (307) 461-7687  
[kaytlin@topdollarangus.com](mailto:kaytlin@topdollarangus.com)

**Andrea Rutledge** • (406) 399-3993  
[andrea@topdollarangus.com](mailto:andrea@topdollarangus.com)

[www.topdollarangus.com](http://www.topdollarangus.com)



Read about  
satisfied  
steer-sellers.  
Scan the QR code:





# LEGAL TERMS AND CONDITIONS

The Red Angus Association Terms and Conditions will apply if the terms and conditions printed here are not applicable.

**BIDDING DISPUTES:** The auctioneer in charge will settle any disputes as to bids. His decision on such matters shall be final.

**TERMS:** The terms of the sale are cash; the right of property shall not pass until after settlement is made. All settlements will be made with the clerks of the sale immediately following the conclusion of the sale and before any cattle will be released from the ranch.

**RETAINED INTEREST:** We are retaining 1/2 interest in all bulls in the sale. We are selling the remaining 1/2 interest, full possession, and full salvage value on these bulls. This option gives Bieber Red Angus Ranch the option to collect, use and market semen from the bull, and does not restrict the purchaser from doing the same. This collection, unless agreed otherwise, would be done at the expense of Bieber Red Angus Ranch, at the buyer's convenience. Also at the time of purchase, the highest bidder on a retained interest bull may elect to purchase exclusive semen rights for 100% of the purchase price in addition to the purchased price on retained bulls. If a buyer elects to purchase exclusive semen rights, Bieber Red Angus Ranch's interest then becomes in herd use only. Bieber Red Angus Ranch retains all rights to use the bull within their herd.

**SEMEN RIGHTS:** Buyers receive semen rights proportional to the interest purchased. If you purchase a 1/2 interest, then you are entitled to 1/2 of the semen collections at cost, provided that you indicate you want semen prior to collection. We intend to collect some of the bulls in the sale and sample them in our herd. We will cooperate with the buyer in collection of the bull. We prefer to collect most bulls after the first season of use, and we will contact the buyer when we intend to collect the bull at a time convenient for the buyer.

**PURCHASER'S RISK:** Each animal becomes the risk of the purchaser as soon as sold. Animals will be fed, watered and cared for at the purchaser's risk for a reasonable time.

**CERTIFICATE OF REGISTRY:** A certificate of registry and transfer will be furnished for each animal sold as a registered animal, after settlement has been made.

**HEALTH:** All cattle will have official health certificates and will sell guaranteed export to Canada. Canadian health certificates will be charged at cost on animals selling under \$4000.

**ANNOUNCEMENTS:** Changes of information contained in this catalog relating to the animals offered for the sale will be announced from the auction block and such announcements shall take precedence. Errors discovered in the catalog will be corrected by announcements at sale time, and such corrections will take precedence over the printed matter in this catalog.

**BREEDER'S GUARANTEE:** 1. All animals are guaranteed breeders, with the exception of: a) calves under twelve months of age; b) animals shown by Purchaser after sale (in cases of animals shown after purchase, the breeding guarantee, if any, shall be such as agreed upon between Seller and Buyer) c) any open heifer that has been flushed for embryo transfer; or d) gross negligence or willful misconduct on the part of the Purchaser. 2. Bulls are guaranteed breeders if not allowed to run with the herd until at least 14 months of age. Any bull which either: a) settles 1/3 or more of the healthy cows he serves; b) is the sire of 20 or more animals; or c) settles cows by natural service and passes a fertility test made by a competent veterinarian during any 6 month period of trial (provided for in paragraph 2 of the section of these sale terms and conditions entitled "Options and Privileges of Return or Adjustment") shall be considered a breeder.

Any guarantee with respect to the ability to freeze semen shall be by separate agreement between Buyer and Seller.

All guarantees are limited to the amount of the purchase price.

Open females have not been served and are so guaranteed.

**IDENTIFICATION:** Each animal carries an EID tag for identification. That EID corresponds with the ID of the animal and is recorded with the Red Angus Association. Tag numbers on the cattle correspond with lot numbers in this catalog. Purchaser agrees to use full name of animal in advertising and on stall cards at shows.

## OPTIONS AND PRIVILEGES OF RETURN OR ADJUSTMENT:

1. All claims for adjustment or refund must be made in writing either within six months of the sale date or no later than six months after the animal reaches 18 months of age, with the exception of claims involving defects or parentage.

2. In the event an animal is claimed to be a non-breeder, the animal may be returned to the farm of the Seller if in good condition and complying with the health requirements of the Seller's state. The Seller shall be entitled to six months' trial following the return of the animal in which to prove the animal is a breeder. The Seller shall, at the option of the Buyer, replace the animal with another of equal value or grant the Buyer a credit for use on any products marketed by the Seller. Such credit of the full purchase price shall in any case be deemed full satisfaction and settlement. Any expense incurred for transporting an animal claimed to be a non-breeder shall be the responsibility of the Purchaser, except that the Seller shall be responsible for the transportation costs in excess of the distance between the Purchaser's farm and the location where the sale took place. If the Seller proves the animal is a breeder, it shall be the obligation of the Purchaser to take delivery of the animal and pay all expense incurred for transportation.

3. If a female sold as "safe in calf" proves not to be in calf, the Purchaser may receive service from the bull previously used, if available, or if the bull is not available, the Seller shall be obligated to make a satisfactory adjustment on the purchase price upon return of the animal to the farm of the Seller. Any adjustment provided for herein shall absolve the Seller from further liability, except in case such female proves to be a non-breeder. If a female represented as "safe in calf" at time of sale to a certain bull proves to have been bred to a different bull, the Seller shall be obligated to take a satisfactory adjustment on the purchase price upon return of the animal to the farm of the Seller (adjustments shall not be considered to a breeding fee or an allocation of the purchase price to any unborn calf). Any expenses incurred for transportation shall be the responsibility of the Purchaser, except that the Seller shall be responsible for the transportation costs in excess to the distance between the Purchaser's farm and the location where the sale took place.

4. If a female sold as "served" proves not to be in calf, or if a female sold as "pasture-bred" proves not to be in calf, the Seller only guarantees such female to the breeder.

5. If a female sold as "open" proves to be with calf, the Purchaser may return the animal to the farm of the Seller prior to calving for a credit of the full purchase price or for another animal of equal value, whichever is acceptable to the Purchaser. It shall be the obligation of the Seller to bear any expense incurred for transportation.

**LIABILITY:** Neither owners, sale managers, clerks nor anyone connected with the sale assumes responsibility, legal or otherwise, for damages of any kind.

**CONTRACT:** The above terms and conditions shall constitute a contract between the buyer and seller of each animal sold.

**IMPLIED WARRANTY:** Except for those stated in the terms and conditions, there are no warranties, either expressed or implied, as to merchantability or fitness for a particular purpose with respect to the cattle being sold in this auction. The warranties set forth in terms and conditions are in lieu of all other warranties, either expressed or implied, and the remedies proved therein shall be the sole and exclusive remedy of the buyer, or any part claiming through buyer, for any breach of warranty or guarantee therein provided and all other obligations or liabilities.





WE LOOK FORWARD TO SEEING YOU THIS SPRING FOR OUR...

# Bieber Fever

**PERFORMANCE YEARLING BULL SALE**

**THURSDAY, MARCH 7, 2024**

**ONLINE OR IN PERSON AT THE RANCH NEAR LEOLA, SD**



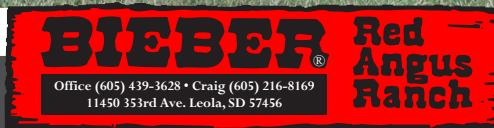


# BIEBER RED ANGUS RANCH

Craig and Peggy Bieber  
11450 353rd Ave. Leola, SD 57456



LOT 24 BIEBER MIMI 391F



LOT 112 BIEBER STOCKMARKET K428

Mark your calendars for our Performance Bull Sale

## March 7, 2024

Featuring 300 Red Angus yearling bulls.

[WWW.BIEBERREDANGUS.COM](http://WWW.BIEBERREDANGUS.COM)