

Bieber Fever

IN THE SOUTHEAST

THURSDAY, OCTOBER 10, 2024

1 PM • GEORGIA SPORTS ARENA IN SWAINSBORO, GA



BIEBER® Red Angus Ranch
Office (605) 439-3628 • Craig (605) 216-8169
11450 353rd Ave. Leola, SD 57456



SALE INFORMATION

SALE CONTACTS

Bieber Red Angus Office.....(605) 439-3628
**Craig Bieber.....(605) 216-8169
**Peggy Bieber.....(605) 380-8169
**Jake Harms.....(605) 929-6686
Craig Howard.....(605) 377-3128
Kristin Harms.....(605) 380-4408
**Clint Berry, Outside Sales Agent.....(417) 844-1009

AUCTIONEER

**Jeff Stansberry.....(615) 479-1852

RING SERVICE

**Jimmy Fetner, Special Assignment.....(334) 863-0115
**Steven Mathis, Special Assignment.....(229) 392-3492
**Phil Richardson, Special Assignment.....(865) 250-1375
***Indicates who will be onsite Sale Day*

RED ANGUS BREED ASSOCIATION

Tom Brink, CEO.....(940) 387-3502
Kelly Smith.....(417) 855-9461

TOP DOLLAR ANGUS

Nathan Smith.....(620) 546-4839

NEOGEN

Kenny Stauffer.....(402) 560-6345
**Matthew Studstill.....(229) 313-1129

FEEDER CALF BUYERS

Evans Hooks, Semiema Farms.....(770) 316-9611
Addison Hooks, Semiema Farms.....(478) 494-0390
Jim Akers, Bluegrass Stockyards.....(859) 361-4221
Will Banks, Bluegrass Stockyards.....(859) 954-1563

SALE ORDER

Sale order will be catalog order. Any variations from catalog order will be announced prior to the sale.

EPD INFORMATION

In this catalog we have included data on the core performance traits. With the ever-expanding database predictions on more traits than ever before, we have had to narrow our EPD selection to these core items. If you would like additional information on any traits not listed, please let us know. The EPDs provided are current as of the date listed under *EPD DATA GENERATED*. Supplement sheets will be provided on sale day.

SUPPLEMENT SHEETS

Supplement sheets with current weight and actual scrotal of the bulls will be available on sale day.

SCHEDULE OF EVENTS

WEDNESDAY, OCTOBER 9 (ALL TIMES EASTERN)

12:00 pm Sale cattle available for viewing all day

THURSDAY, OCTOBER 10

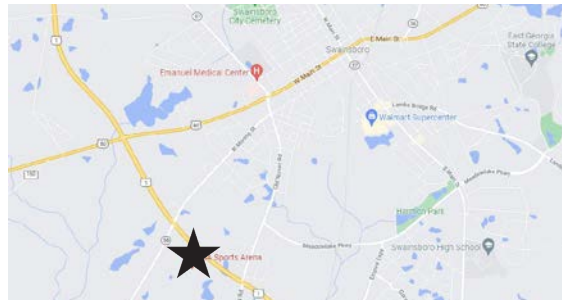
8:00 am Sale cattle available for viewing

12:00 pm Lunch will be served

1:00 pm Sale time

SALE LOCATION

Georgia Sports Arena, 1093 GA-56 South, Swainsboro, GA 30401



DELIVERY POLICY

All registered lots will be hauled to Georgia at the beginning of October. All lots will be onsite sale day and available for load out following settlement. You can settle your purchases immediately following the sale.

Any lots that are not loaded out on sale day will be moved to Semiema Farms owned by the Hooks family on Friday, October 11. We can assist in arranging reliable truckers to transport your cattle to your operation after we receive payment in full. All freight charges from Semiema Farms to the final destination are the responsibility of the buyer.

DVAUCTION

The sale will be broadcast live over the internet through DVAuction. To bid from your computer during the sale, complete this simple two step process:

- Visit www.dvauction.com or call (402) 474-5557. Register by entering a User Name and Password. Enter your personal information on the next screen.
- Click "Apply for Bidding." Select the Bieber Red Angus Sale from the list of sales and click "Apply." Complete the process by filling out the Banking and Lending information requested.

DVAuction will contact you to let you know that you have been approved to bid and buy at the sale. We will assign you a buyer number after you have made a purchase on the sale through DVAuction. After the sale, Bieber Red Angus will contact you to make arrangements for payment and delivery of your purchases.

Please Note: You must have high speed internet access (DSL, T-1, or Broadband) to bid during the sale. Any questions, please contact DVAuction at (402) 474-5557 or support@dvauction.com. We recommend that you register at least one day before the sale for online bidding.



CATALOG LETTER

Welcome

TO OUR 2024 BIEBER FEVER IN THE SOUTHEAST SALE!

Welcome to the sixth Bieber Fever in the Southeast offering! We want to thank each of you for taking the time to learn about our operation and take a deeper look at the cattle we have to offer at this sale in Georgia. We work hard to provide our customers with cutting edge genetics that excel in all segments of the beef industry. To us that means breeding for growth, fertility, calving ease, maternal and carcass traits. These traits should come in a functional package, with good feet, udders, and disposition, without giving up style and eye appeal. We truly believe through focused selection, you can have it all.

Our program has been an influential player in the Red Angus breed, and the cattle industry as a whole, for over 50 years. Through those years, we have seen many different seedstock breeders come and go - some much quicker than others. We use our experience and knowledge of development to produce seedstock cattle that will offer longevity and productivity. That means you get a product that is far above the average of the industry.

We find ourselves constantly monitoring the information in the industry to make sure we have the knowledge that will benefit you when you need advice. When new technology becomes available, we analyze it to make robust decisions on how to use it to be more profitable. We believe the future is Red Angus, and these cattle are a benefit to the profitability of commercial cattlemen in hotter climates. The red hide color is a big factor in improving female fertility.

Our program has a focus on profit that is second to none. We use that focus in every part of our program and daily work to give you the consistency you want in your cowherd. We have always felt good seedstock in volume pushes prices to a level every cattle producer can afford. After reading this, I personally hope you take the time to do one of the following things:

- Come to the Georgia Sports Arena and look at this offering. This year we are offering the first Jumpstart bulls ever offered by our program! They are stout bulls and warrant your attention.
- Get on our website and take a look at our videos.
- Call anyone under SALE CONTACTS for a personalized bull list that fits your operation.

On sale day, we look forward to seeing our customers that have become friends and meeting new customers that we hope to have a long-standing relationship with. We are excited to see you at BIEBER FEVER IN THE SOUTHEAST.

CRAIG J BIEBER



Our Family

Back L to R: Eric and Megan Payne, Craig and Peggy Bieber, Kristin, Jake, and Holton Harms

Front L to R: Londyn Harms, Kylie Payne, Hartley Harms, Presley Payne



SALE TERMS

HEALTH

All cattle are on a complete vaccination program supervised by Ashley Vet Clinic in North Dakota.

In the past bulls have been tested for persistent BVD carriers and all tests were negative for a number of years. We have chosen not to test the bulls this year since no positives have been found in over 10 years. We have tested our replacement heifers for BVD since 2014 as part of our surveillance program and found no positive BVD carriers. Bieber Red Angus participates in the Beef Quality Assurance (BQA) program. Heifer calves have been Bangs vaccinated. We participated in a Johnes testing program for 10 years with no confirmed positives. We no longer test for Johnes disease but continue to diligently watch for any suspicious cases and test as necessary.

Dr. Ace Clark of Swainsboro Animal Hospital will be onsite sale day to write health papers for any animals being transported out of state.

BREEDING SOUNDNESS EVALUATION

Breeding soundness screenings will be performed in September by the Ashley Vet Clinic and an individual semen evaluation can be provided on each bull upon request. We fully guarantee that these bulls will pass the breeding soundness evaluation before the breeding season if the bulls are managed properly. Being maintained properly means being on a plan of nutrition where bulls maintain or gain weight. The bulls will be weighed prior to the sale when the breeding soundness evaluation is performed. We recommend that all bulls be tested again 4 to 6 weeks prior to your breeding season. Our breeding soundness guarantee will require that the bull weigh the same or more than when we did the breeding soundness evaluation in September 2024. We ask for your understanding if a bull does not pass. Sometimes bulls that have passed do not pass later for various reasons. We will do our best to make sure you are satisfied. Keep in mind that the development of any bull is inhibited by inadequate nutrition or where weight loss is evident. If you have any questions regarding the breeding soundness evaluation, feel free to call Craig.

RETAINED INTEREST

We are selling 100% interest, full possession, and full salvage value. Bieber Red Angus Ranch's interest will be in herd use only, but Bieber Red Angus Ranch retains all rights to use the bull within their herd.

BIRTH WEIGHTS/CALVING EASE

We score for calving ease with our three star (*) scoring system. Three stars (***) indicates that a particular bull can be used on heifers under standard conditions with little or no calving difficulty. Two stars (**) indicates that a particular bull should be used on growthy heifers or cows under standard conditions with little or no difficulty. One star (*) indicates that a particular bull should be used on cows under standard conditions with little or no difficulty. This recommendation is a system we use to help our customers with calving ease selections.

Birth weights are highly affected by environmental factors. Research has indicated that the inclusion of corn in cow diets will increase BW. Also contributing to higher BW were cold temperatures. The University of Nebraska conducted a three-year study to research and evaluate effects of high and low temperatures during winter months on calves out of 384 two-year-old heifers. Average BW increased by 11 lbs. when temperatures were colder. The results agree with other studies comparing calves born in the southern US to calves born in the northern US. Weather plays an important role in BW and calving difficulty. We have adjusted the calving ease scores accordingly, taking into consideration what the calf ratioed on BW, pedigree, CE EPD, BW EPD and Genomic data.

COLOR

All animals are red unless otherwise indicated in the footnotes.

WEIGHTS

Birth weights, weaning weights, yearling weights, and all other measurements are taken at appropriate times to produce sound and accurate comparisons within contemporary groups. We group our Red Angus calves based on the age of our cows. Calves out of two-year-old dams, three-year-old dams, and the main cowherd are all separate management groups and therefore are separate contemporary groups. Embryo transplant calves are contemporaried in the groups they are weaned with.

WEANING WEIGHTS

These calves were raised without creep. We feel that this helps us select and breed for dams that have milking ability and sound udders. ET calves are on creep feed to express their full genetic potential.

INTERNET AND ABSENTEE BIDDING

We would prefer for you to be in attendance on sale day. Realistically, we know that there will be scheduling conflicts and distance limitations. In these instances, we will have internet bidding available through DVAuction. Please review the internet bidding instructions and information under the DVAuction section on the first page of the catalog.

If you are unable to attend and you feel comfortable doing so, you also have the option to leave your bids with the Bieber crew, Auctioneer, or ring service representatives. We handle many sight unseen bids and have very satisfied customers who feel confident in using this service. We prefer to have plenty of time to discuss your needs over the phone prior to sale day so that we may select the cattle that best fit your specifications. We buy those animals just like you were sitting ringside with us. We also guarantee the cattle and if they don't meet your expectations, you can return them. If possible, please evaluate the offering onsite prior to sale day. We will also post video of each lot on our website.

GENETIC DEFECTS

Every animal in the Bieber Red Angus production sale is guaranteed negative for the recessive gene associated with Osteopetrosis(OS), Arthrogyposis Multiplex(AM) (Curly Calf Syndrome), Neuropathic Hydrocephalus (NH) and any other known genetic defects. With this guarantee, we provide our customers the opportunity to purchase their choice of cattle with very little risk. DNA samples have been collected on every animal in the sale with any known carrier in the first three generations and tested negative unless otherwise noted.

GAIN TESTING

These bulls were weaned in October of 2023 and yearling weights were taken in May of 2024.

UPDATED SUPPLEMENT INFORMATION

Supplement sheets will be available on sale day and will include actual scrotal measurements and actual weights. Adjusted scrotal size is printed in the catalog. These are adjusted by the Red Angus Association of America. We find actual scrotal measurements at sale time are typically one centimeter larger than the adjusted measurements.





LOT 1 BIEBER ASSET L396

We start the sale off with this outstanding Asset son whose dam has been an ET donor. This is a natural son, and her record is stout with a 111 WW ratio average and a 107 IMF average. Lot 1 posts some stout data and is truly breed leading across the board. His sire was purchased from Pieper's and is out of the dam of Quarterback, the famous Ruby 520 cow. Lot 1 is stacked with prepotency and will push any herd in the right direction on growth.

BORN: 5/8/2023 REG: 4847368 100% AR 1A

RED MRLA RESOURCE 137E
PIE ASSET 1276

PIE RUBY 520

BIEBER CL STOCKMAN E116

BIEBER DATELINE 559H AOD: 3

MPPA: 109

BIEBER DATELINE 525F

ADG 3.2
 WDA 3.2
 ASCr 33.94
 CE ***
 GROWTH Sc. G5
 FRAME Sc. 6

	CED	BW	WW	YW	MILK	ME	HPG	CEM	STAY	MARB	REA	EAT
EPD	15	-2.2	77	130	32	26	13	9	19	0.62	0.12	0.03
Rank	22%	42%	12%	7%	5%	99%	17%	18%	5%	17%	55%	81%
Wts.		64	668	1182								
Ratio		86	112	107								

EPD Data Generated 9/5/2024

HERDBUILDER 67 GRIDMASTER 79 PROS 146
 RANK 25% RANK 8% RANK 6%



AGE-ADVANTAGED BULLS

2 BIEBER BLUE CHIP L384

BORN: 5/1/2023 REG: 4847304 100% AR 1A

BIEBER CL STOCKMARKET E119	ADG 3.08
BIEBER BLUE CHIP H302	WDA 3.07
BIEBER ROSE 162C	ASCR 36.71
BIEBER HARD DRIVE E640	CE ***
BIEBER MAIDMARION 416J AOD: 2	GROWTH Sc. G6
MPPA: 103 BIEBER MAIDMARION 325F	FRAME Sc. 5

	CED	BW	WW	YW	MILK	ME	HPG	CEM	STAY	MARB	REA	FAT
EPD	13	-1.5	79	125	27	11	11	8	16	0.70	0.51	0.03
Rank	47%	56%	8%	11%	36%	88%	49%	23%	35%	10%	4%	76%
Wts.	76	687	1182									
Ratio	115	108	105									

EPD Data Generated 9/5/2024

HERDBUILDER	61	GRIDMASTER	68	PROS	129
RANK	37%	RANK	19%	RANK	19%



Blue Chip, one of Stockmarket's leading sons, has produced progeny that are taking the breed by storm. Lot 2 posts some great data and will be an excellent option for anyone trying to keep BW moderate but still produce plenty of growth. His dam is sired by Flashdrive's sire and has made some outstanding females.



Bieber
Blue Chip
H302

3 BIEBER JUMPSTART L413

BORN: 5/11/2023 REG: 4847428 100% AR 1A

BIEBER CL ENERGIZE F121	ADG 2.96
BIEBER JUMPSTART J137	WDA 3.16
BIEBER GALLEE 390G	ASCR 37.53
BIEBER HARD DRIVE Y120	CE ***
BIEBER PRIMROSE 429E AOD: 6	GROWTH Sc. G5
MPPA: 98 BIEBER PRIMROSE 493A	FRAME Sc. 5+

	CED	BW	WW	YW	MILK	ME	HPG	CEM	STAY	MARB	REA	FAT
EPD	18	-3.6	75	116	29	20	17	11	18	0.41	0.37	0.02
Rank	4%	18%	16%	24%	25%	99%	2%	3%	11%	51%	16%	55%
Wts.	63	674	1148									
Ratio	81	101	98									

EPD Data Generated 9/5/2024

HERDBUILDER	79	GRIDMASTER	51	PROS	130
RANK	10%	RANK	50%	RANK	18%



Everyone has been waiting for the Jumpstart progeny since he sold for \$185,000 to Select Sires and a group of great breeders. This is the very first Jumpstart son we will offer ever. They provide great growth, outstanding phenotype and superior maternal. Lot 3 stacks the Primrose cowline which has been solid in our herd. You can use him on heifers and expect them to have great growth across the herd. Jumpstart progeny will be coveted, putting consistently profitable traits in your herd.



4 BIEBER FLASHDRIVE L424

BORN: 5/12/2023 REG: 4847458 100% AR 1A

BIEBER HARD DRIVE E640	ADG 3.4
BIEBER FLASHDRIVE G266	WDA 3.5
BIEBER FLOWER 312E	ASCR 42.06
BIEBER ROLLIN DEEP Y118	CE *
BIEBER TOP LINE 534F AOD: 5	GROWTH Sc. G6
MPPA: 101 BIEBER TOP LINE 447Z	FRAME Sc. 6

	CED	BW	WW	YW	MILK	ME	HPG	CEM	STAY	MARB	REA	FAT
EPD	7	1.4	89	137	28	22	12	7	14	0.75	0.50	0.04
Rank	97%	95%	1%	3%	28%	99%	43%	59%	58%	7%	4%	92%
Wts.	68	722	1266									
Ratio	88	108	108									

EPD Data Generated 9/5/2024

HERDBUILDER	36	GRIDMASTER	73	PROS	109
RANK	84%	RANK	13%	RANK	46%



Flashdrive has provided breed leading growth just like this sire. Lot 4 will put growth in your calves and give you pounds that pay. His style and class are exactly what you expect from the Bieber program. Lot 4 also give your calves an advantage as he leads the breed on carcass.



4

AGE-ADVANTAGED BULLS



5

BIEBER ASSET L455

BORN: 5/20/2023 REG: 4847522 100% AR 1A

RED MRLA RESOURCE 137E	ADG 2.77
PIE ASSET 1276	WDA 2.82
PIE RUBY 520	AScr 37.32
BIEBER ROLLIN DEEP Y118	CE **
BIEBER TILLY 248H AOD: 3	GROWTH Sc. G5
MPPA: 99	FRAME Sc. 4+
BIEBER TILLY 233U	

	CED	BW	WW	YW	MILK	ME	HPG	CEM	STAY	MARB	REA	FAT
EPD	10	1.7	72	124	29	12	12	6	18	0.43	0.41	0.01
Rank	84%	96%	22%	12%	24%	91%	35%	75%	10%	47%	8%	34%
Wts.		75	589	1033								
Ratio		100	99	94								

EPD Data Generated 9/5/2024

HERDBUILDER RANK	66	28%	GRIDMASTER RANK	80	8%	PROS RANK	145	6%
------------------	----	-----	-----------------	----	----	-----------	-----	----



Lot 5 is sired by Asset and a maternal sister to Spartacus, a sire that led the lineup at Select Sires for years. The Tilly cowline has been producing herd bulls for years and your program will benefit from the decades of consistent focus our program is known for.

6

BIEBER FLASHDRIVE L448

BORN: 5/17/2023 REG: 4847492 100% AR 1A

BIEBER HARD DRIVE E640	ADG 3.79
BIEBER FLASHDRIVE G266	WDA 3.58
BIEBER FLOWER 312E	AScr 34.23
9 MILE FRANCHISE 6305	CE *
BIEBER TORYANNA 310H AOD: 3	GROWTH Sc. G6
MPPA: 109	FRAME Sc. 6+
BIEBER TORYANNA 548D	

	CED	BW	WW	YW	MILK	ME	HPG	CEM	STAY	MARB	REA	FAT
EPD	4	1.5	85	145	33	22	14	4	17	0.70	0.62	0.05
Rank	99%	95%	2%	1%	4%	99%	9%	92%	19%	10%	2%	97%
Wts.		84	673	1281								
Ratio		111	113	116								

EPD Data Generated 9/5/2024

HERDBUILDER RANK	49	62%	GRIDMASTER RANK	90	3%	PROS RANK	138	11%
------------------	----	-----	-----------------	----	----	-----------	-----	-----



This Flashdrive son leads the pack when it comes to WW and YW. His dam is sired by Franchise who is one of the breed's best maternal sires.



7

BIEBER JUMPSTART L430

BORN: 5/14/2023 REG: 4847478 100% AR 1A

BIEBER CL ENERGIZE F121	ADG 3.23
BIEBER JUMPSTART J137	WDA 3.25
BIEBER GALLEE 390G	AScr 33.63
LOOSLI RIGHT ON 423	CE **
BIEBER TORYANNA 619E AOD: 6	GROWTH Sc. G6
MPPA: 100	FRAME Sc. 6
BIEBER TORYANNA 211Y	

	CED	BW	WW	YW	MILK	ME	HPG	CEM	STAY	MARB	REA	FAT
EPD	11	-0.8	85	139	29	16	13	6	11	0.32	0.28	0.03
Rank	80%	70%	3%	3%	22%	97%	20%	78%	89%	77%	26%	75%
Wts.		85	639	1156								
Ratio		110	96	98								

EPD Data Generated 9/5/2024

HERDBUILDER RANK	22	96%	GRIDMASTER RANK	48	57%	PROS RANK	70	93%
------------------	----	-----	-----------------	----	-----	-----------	----	-----



Lot 7 has posted really good growth data and he will give you some great phenotype being out of Jumpstart. The Right On daughters have been very productive matrons.





LOT 8 BIEBER FLASHDRIVE L414

Here we have a product of Flashdrive x Spartacus - two sires who produced a lot of thickness and muscle in their progeny. Lot 8's maternal is topnotch being out of the esteemed Primrose cowline. His data is in the top 1% on growth making him a great choice if you are planning to add pounds to your calf crop. Not to mention, when you add in his carcass traits, your calf buyers will be fighting for your calves.

BORN: 5/11/2023

REG: 4847430

100% AR 1A

BIEBER HARD DRIVE E640
BIEBER FLASHDRIVE G266
 BIEBER FLOWER 312E
 BIEBER SPARTACUS A193
BIEBER PRIMROSE 275E AOD: 6
 MPPA: 99 BIEBER PRIMROSE 481B

ADG 3.52
 WDA 3.54
 AScR 39.03
 CE **
 GROWTH SC. G6
 FRAME SC. 5+

	CED	BW	WW	YW	MILK	ME	HPG	CEM	STAY	MARB	REA	FAT
EPD	10	1.7	99	163	29	20	13	8	14	0.70	0.55	0.03
Rank	82%	96%	1%	1%	19%	99%	26%	40%	58%	10%	3%	81%
Wts.		75	703	1266								
Ratio		97	105	108								

EPD Data Generated 9/5/2024

HERDBUILDER 48 RANK 63% GRIDMASTER 82 RANK 6% PROS 130 RANK 17%





LOT 9 BIEBER ASSET L461

The Asset sons have great kind and stack a lot of maternal into their pedigree and EPD traits. We've already seen several at the front of this line up and this sire is no different - they all deliver excellent performance. Make sure to note that lot 9 is a 1B status, but he gives nothing up when it comes to the working kind and would be a great addition to any commercial herd.

BORN: 5/23/2023 REG: 4847546 98.4% AR 1.6% XX 1B

RED MRLA RESOURCE 137E
PIE ASSET 1276

PIE RUBY 520

BIEBER TRA168

BIEBER DURHEIM 337D AOD: 7

MPPA: 102

BIEBER DURHEIM 339A

ADG 3.23
 WDA 3.45
 ASCr 36.42
 CE *
 GROWTH Sc. G4
 FRAME Sc. 5+

	CED	BW	WW	YW	MILK	ME	HPG	CEM	STAY	MARB	REA	EAT
EPD	7	1.5	67	116	28	19	13	5	16	0.05	0.26	0.01
Rank	97%	95%	41%	23%	26%	99%	19%	92%	42%	99%	28%	38%
Wts.		84	727	1244								
Ratio		108	109	106								

EPD Data Generated 9/5/2024

HERDBUILDER 35 GRIDMASTER 35 PROS 70
 RANK 85% RANK 81% RANK 93%



AGE-ADVANTAGED BULLS

10 BIEBER PAYCHECK I440

BORN: 5/15/2023 REG: 4847724 100% AR 1A

WFL FRANKLY F8276
LARR PAYCHECK 0728
 LARR MISS CC FLOWER 7528
 BIEBER GLADIATOR C386
BIEBER DURHEIM 295F AOD: 5
 MPPA: 106 BIEBER TINA 118Y

ADG 3.42
 WDA 3.46
 ASCR 38.16
 CE ***
 GROWTH Sc. G6
 FRAME Sc. 6

	CED	BW	WW	YW	MILK	ME	HPG	CEM	STAY	MARB	REA	FAT
EPD	14	-3.9	83	144	33	14	14	9	9	0.84	0.28	0.05
Rank	38%	15%	4%	2%	3%	95%	13%	18%	96%	4%	26%	95%
Wts.	75	690	1238									
Ratio	97	103	105									

EPD Data Generated 9/5/2024

HERDBUILDER 25 RANK 94%
 GRIDMASTER 83 RANK 6%
 PROS 109 RANK 46%



Lot 10 comes with top growth and marbling to go with it.



11 BIEBER PAYCHECK I449

BORN: 5/17/2023 REG: 4847496 100% AR 1A

WFL FRANKLY F8276
LARR PAYCHECK 0728
 LARR MISS CC FLOWER 7528
 BIEBER SPARTACUS A193
BIEBER TILLY 163E AOD: 6
 MPPA: 94 BIEBER TILLY 140C

ADG 3.79
 WDA 3.6
 ASCR 39.23
 CE **
 GROWTH Sc. G6
 FRAME Sc. 6

	CED	BW	WW	YW	MILK	ME	HPG	CEM	STAY	MARB	REA	FAT
EPD	13	0.0	102	165	25	19	11	7	10	0.76	0.74	0.03
Rank	55%	83%	1%	1%	57%	99%	54%	49%	94%	7%	1%	71%
Wts.	78	651	1257									
Ratio	101	98	107									

EPD Data Generated 9/5/2024

HERDBUILDER 16 RANK 98%
 GRIDMASTER 91 RANK 3%
 PROS 107 RANK 49%



AGE-ADVANTAGED BULLS

12 BIEBER BLUE CHIP L378

BORN: 4/26/2023 REG: 4847284 100% AR 1A

BIEBER CL STOCKMARKET E119	ADG 2.57
BIEBER BLUE CHIP H302	WDA 2.63
BIEBER ROSE 162C	AScr 34.55
KJL/CLZB KIRKLAND 8003F	CE ***
BIEBER SIERRA 325J AOD: 2	GROWTH Sc. G3
MPPA: 98 BIEBER SIERRA 101E	FRAME Sc. 4

	CED	BW	WW	YW	MILK	ME	HPG	CEM	STAY	MARB	REA	FAT
EPD	21	-7.5	54	81	28	-3	12	12	20	0.54	0.04	0.06
Rank	1%	1%	86%	90%	30%	23%	35%	1%	4%	27%	71%	98%
Wts.	53	610	1024									
Ratio	82	96	91									

EPD Data Generated 9/5/2024

HERDBUILDER 99	GRIDMASTER 42	PROS 141	
RANK 1%	RANK 69%	RANK 9%	

13 BIEBER JUMPSTART L397

BORN: 5/8/2023 REG: 4847370 100% AR 1A

BIEBER CL ENERGIZE F121	ADG 3.06
BIEBER JUMPSTART J137	WDA 3.11
BIEBER GALLEE 390G	AScr 37.94
BIEBER ROLLIN DEEP Y118	CE ***
BIEBER PRIMROSE 306F AOD: 5	GROWTH Sc. G4
MPPA: 97 BIEBER PRIMROSE 464B	FRAME Sc. 4+

	CED	BW	WW	YW	MILK	ME	HPG	CEM	STAY	MARB	REA	FAT
EPD	19	-4.5	67	109	28	13	14	12	18	0.52	0.03	0.04
Rank	1%	10%	43%	39%	28%	94%	16%	1%	14%	30%	73%	91%
Wts.	65	629	1119									
Ratio	84	94	95									

EPD Data Generated 9/5/2024

HERDBUILDER 78	GRIDMASTER 56	PROS 135	
RANK 10%	RANK 37%	RANK 13%	

14 BIEBER FRANCHISE L491

BORN: 5/31/2023 REG: 4847644 100% AR 1A

9 MILE FRANCHISE 6305	ADG 3.52
PIE FRANCHISE 9031	WDA 3.05
PIE FAYETTE 7106	AScr 33.68
BIEBER DRIVEN C540	CE *
BIEBER PRIMROSE 236H AOD: 3	GROWTH Sc. G5
MPPA: 90 BIEBER PRIMROSE 222B	FRAME Sc. 5+

	CED	BW	WW	YW	MILK	ME	HPG	CEM	STAY	MARB	REA	FAT
EPD	9	1.8	73	127	27	9	16	8	18	0.60	0.16	0.01
Rank	94%	96%	20%	9%	34%	79%	4%	23%	12%	20%	46%	28%
Wts.	86	465	1030									
Ratio	114	78	94									

EPD Data Generated 9/5/2024

HERDBUILDER 85	GRIDMASTER 79	PROS 164	
RANK 6%	RANK 8%	RANK 1%	

15 BIEBER JUST RIGHT L496

BORN: 6/3/2023 REG: 4847662 100% AR 1A

PIE JUST RIGHT 540	ADG 3.08
PIE JUST RIGHT 005	WDA 3.09
C-BAR ABIGRACE 838F	AScr 35.78
BIEBER HARD DRIVE Y120	CE ***
BIEBER PRIMROSE 274D AOD: 7	GROWTH Sc. G4
MPPA: 98 BIEBER PRIMROSE 266X	FRAME Sc. 5

	CED	BW	WW	YW	MILK	ME	HPG	CEM	STAY	MARB	REA	FAT
EPD	17	-4.5	67	104	26	2	13	10	14	0.79	0.62	0.03
Rank	7%	10%	43%	48%	44%	43%	20%	10%	64%	6%	2%	71%
Wts.	80	583	1076									
Ratio	103	87	92									

EPD Data Generated 9/5/2024

HERDBUILDER 60	GRIDMASTER 91	PROS 151	
RANK 38%	RANK 3%	RANK 4%	



AGE-ADVANTAGED BULLS

16 BIEBER ASSET L447

BORN: 5/17/2023 REG: 4847490 100% AR 1A
 RED MRLA RESOURCE 137E
PIE ASSET 1276
 PIE RUBY 520
 STRA FORERUNNER 838
BIEBER ET MISS 327H AOD: 3
 MPPA: 100 BIEBER ET MISS 460E

	CED	BW	WW	YW	MILK	ME	HPG	CEM	STAY	MARB	REA	FAT
EPD	10	2.6	74	126	28	18	13	7	14	0.33	0.36	0.02
Rank	88%	98%	18%	10%	25%	98%	24%	64%	70%	75%	17%	57%
Wts.		78	635	1064								
Ratio		104	107	97								

HERDBUILDER 35 GRIDMASTER 59 PROS 94
 RANK 86% RANK 31% RANK 68%



17 BIEBER FLASHDRIVE L402

BORN: 5/9/2023 REG: 4847392 100% AR 1A
 BIEBER HARD DRIVE E640
BIEBER FLASHDRIVE G266
 BIEBER FLOWER 312E
 BIEBER GLADIATOR C386
BIEBER ROSE 110F AOD: 5
 MPPA: 100 BIEBER ROSE 430D

	CED	BW	WW	YW	MILK	ME	HPG	CEM	STAY	MARB	REA	FAT
EPD	12	-1.4	85	137	29	14	15	7	12	0.80	0.39	0.03
Rank	70%	58%	3%	3%	23%	94%	8%	46%	83%	5%	10%	72%
Wts.		73	706	1145								
Ratio		94	106	97								

HERDBUILDER 40 GRIDMASTER 96 PROS 137
 RANK 78% RANK 1% RANK 12%



18 BIEBER COMPONENT L436

BORN: 5/14/2023 REG: 4847718 100% AR 1A
 LSF MEW X-FACTOR 6693D
LSF SRR COMPONENT 1112J
 LSF SRR DOROTHY 489 D6559
 BIEBER HARD DRIVE E640
BIEBER PRIMROSE 270J AOD: 2
 MPPA: 102 BIEBER PRIMROSE 444F

	CED	BW	WW	YW	MILK	ME	HPG	CEM	STAY	MARB	REA	FAT
EPD	10	1.5	72	116	27	17	15	6	10	0.69	0.35	0.02
Rank	87%	95%	23%	23%	35%	98%	5%	73%	95%	11%	18%	57%
Wts.		72	677	1126								
Ratio		108	106	100								

HERDBUILDER 15 GRIDMASTER 84 PROS 98
 RANK 98% RANK 6% RANK 61%



19 BIEBER KIRKLAND L456

BORN: 5/20/2023 REG: 4847524 100% AR 1A
 HXC 5545C
KJL/CLZB KIRKLAND 8003F
 HXC 107Y
 MILWILLAH MARBLE BAR J53
BIEBER TORYANNA 132F AOD: 5
 MPPA: 97 BIEBER TORYANNA 517D

	CED	BW	WW	YW	MILK	ME	HPG	CEM	STAY	MARB	REA	FAT
EPD	13	-2.4	65	109	25	11	16	6	14	0.47	0.32	0.03
Rank	48%	38%	53%	39%	59%	88%	2%	70%	62%	39%	21%	69%
Wts.		68	588	1093								
Ratio		88	88	93								

HERDBUILDER 48 GRIDMASTER 49 PROS 97
 RANK 63% RANK 55% RANK 64%



AGE-ADVANTAGED BULLS

20 BIEBER KIRKLAND L505

BORN: 6/9/2023 REG: 4847688 100% AR 1A

HXC 5545C KJL/CLZB KIRKLAND 8003F HXC 107Y BIEBER HARD DRIVE Y120 BIEBER ROSE 520E AOD: 6 MPPA: 99 BIEBER ROSE 475A	ADG 3.37 WDA 3.33 AScR 36.97 CE ** GROWTH Sc. G5 FRAME Sc. 5
--	---

	CED	BW	WW	YW	MILK	ME	HPG	CEM	STAY	MARB	REA	FAT
EPD	10	-1.2	73	115	24	14	16	5	9	0.72	0.45	0.01
Rank	86%	62%	21%	26%	65%	95%	4%	90%	96%	9%	6%	36%
Wts.		82	605	1145								
Ratio		106	91	97								

EPD Data Generated 9/5/2024

HERDBUILDER 13	GRIDMASTER 70	PROS 83	
RANK 98%	RANK 16%	RANK 82%	

21 BIEBER COMPONENT L487

BORN: 5/30/2023 REG: 4847636 100% AR 1A

LSF MEW X-FACTOR 6693D LSF SRR COMPONENT 1112J LSF SRR DOROTHY 489 D6559 BIEBER CL STOCKMAN E116 BIEBER JOAN 188J AOD: 2 MPPA: 99 BIEBER JOAN 109F	ADG 3.52 WDA 3.28 AScR 35.15 CE *** GROWTH Sc. G5 FRAME Sc. 5
---	--

	CED	BW	WW	YW	MILK	ME	HPG	CEM	STAY	MARB	REA	FAT
EPD	14	-2.0	76	126	29	19	11	9	15	0.60	0.38	0.05
Rank	38%	46%	13%	10%	22%	99%	53%	12%	55%	20%	13%	97%
Wts.		77	620	1185								
Ratio		113	97	106								

EPD Data Generated 9/5/2024

HERDBUILDER 43	GRIDMASTER 66	PROS 109	
RANK 73%	RANK 21%	RANK 45%	

22 BIEBER JUMPSTART L453

BORN: 5/19/2023 REG: 4847514 99.1% AR 0.9% XX 1B

BIEBER CL ENERGIZE F121 BIEBER JUMPSTART J137 BIEBER GALLEE 390G BIEBER GLADIATOR C386 BIEBER DURHEIM 143H AOD: 3 MPPA: 95 BIEBER DURHEIM 181F	ADG 2.52 WDA 2.64 AScR 35.29 CE *** GROWTH Sc. G5 FRAME Sc. 5
---	--

	CED	BW	WW	YW	MILK	ME	HPG	CEM	STAY	MARB	REA	FAT
EPD	14	-3.1	79	135	27	21	16	9	13	0.48	0.23	0.02
Rank	38%	26%	9%	4%	35%	99%	4%	18%	80%	37%	33%	49%
Wts.		72	573	979								
Ratio		96	96	89								

EPD Data Generated 9/5/2024

HERDBUILDER 38	GRIDMASTER 64	PROS 102	
RANK 80%	RANK 25%	RANK 56%	



23 BIEBER ASSET L479

BORN: 5/27/2023 REG: 4847764 100% AR 1A

RED MRLA RESOURCE 137E PIE ASSET 1276 PIE RUBY 520 BIEBER CL ATOMIC C218 BIEBER LAURA 336G AOD: 4 MPPA: 103 BIEBER LAURA 307Z	ADG 3.01 WDA 3.29 AScR 36.55 CE ** GROWTH Sc. G5 FRAME Sc. 5+
--	--

	CED	BW	WW	YW	MILK	ME	HPG	CEM	STAY	MARB	REA	FAT
EPD	12	-1.3	73	126	29	18	12	7	16	0.39	-0.07	0.03
Rank	66%	59%	22%	10%	21%	98%	47%	49%	41%	55%	88%	67%
Wts.		82	728	1211								
Ratio		107	109	103								

EPD Data Generated 9/5/2024

HERDBUILDER 44	GRIDMASTER 65	PROS 109	
RANK 72%	RANK 23%	RANK 45%	

24 BIEBER PAYCHECK L405

BORN: 5/9/2023 REG: 4847398 100% AR 1A

WFL FRANKLY F8276 LARR PAYCHECK 0728 LARR MISS CC FLOWER 7528 GMRA TRINITY 5222 BIEBER LASS 418F AOD: 5 MPPA: 105 BIEBER LASS 436A	ADG 3.59 WDA 3.62 AScR 34.97 CE *** GROWTH Sc. G6 FRAME Sc. 5+
---	---

	CED	BW	WW	YW	MILK	ME	HPG	CEM	STAY	MARB	REA	FAT
EPD	14	-1.2	97	164	31	22	12	10	12	0.53	0.42	0.05
Rank	28%	62%	1%	1%	11%	99%	44%	8%	85%	28%	8%	94%
Wts.		67	729	1304								
Ratio		86	109	111								

EPD Data Generated 9/5/2024

HERDBUILDER 33	GRIDMASTER 75	PROS 107	
RANK 88%	RANK 12%	RANK 48%	

AGE-ADVANTAGED BULLS

25 BIEBER JUMPSTART L459

BORN: 5/23/2023 REG: 4847536 100% AR 1A

BIEBER CL ENERGIZE F121	ADG 3.57
BIEBER JUMPSTART J137	WDA 3.39
BIEBER GALLEE 390G	ASCR 37.42
BIEBER CL STOCKMAN E116	CE ***
BIEBER TORYANNA 201H AOD: 3	GROWTH Sc. G6
MPPA: 103 BIEBER TORYANNA 554E	FRAME Sc. 5

	CED	BW	WW	YW	MILK	ME	HPG	CEM	STAY	MARB	REA	FAT
EPD	16	-2.0	92	159	31	30	13	10	12	0.37	0.59	0.05
Rank	9%	46%	1%	1%	9%	99%	18%	10%	84%	67%	2%	95%
Wts.		65	645	1218								
Ratio		87	108	111								

EPD Data Generated 9/5/2024

HERDBUILDER RANK	23 95%	GRIDMASTER RANK	76 11%	PROS RANK	99 61%	
------------------	------------------	-----------------	------------------	-----------	------------------	--

26 BIEBER COMPONENT L389

BORN: 5/8/2023 REG: 4847342 98.3% AR 1.6% SM 0.1% XX 1B

LSF MEW X-FACTOR 6693D	ADG 3.67
LSF SRR COMPONENT 1112J	WDA 3.37
LSF SRR DOROTHY 489 D6559	ASCR 39.44
TJS GATE KEEPER F106	CE **
BIEBER BD3P 274J AOD: 2	GROWTH Sc. G6
MPPA: 101 BIEBER BD3P 466F	FRAME Sc. 5+

	CED	BW	WW	YW	MILK	ME	HPG	CEM	STAY	MARB	REA	FAT
EPD	10	-1.9	79	129	28	15	14	6	11	0.60	0.10	0.05
Rank	85%	48%	9%	8%	32%	96%	13%	72%	90%	20%	59%	94%
Wts.		68	656	1244								
Ratio		101	103	111								

EPD Data Generated 9/5/2024

HERDBUILDER RANK	23 95%	GRIDMASTER RANK	67 20%	PROS RANK	91 73%	
------------------	------------------	-----------------	------------------	-----------	------------------	--

27 BIEBER JUMPSTART L450

BORN: 5/18/2023 REG: 4847500 100% AR 1A

BIEBER CL ENERGIZE F121	ADG 3.3
BIEBER JUMPSTART J137	WDA 3.15
BIEBER GALLEE 390G	ASCR 35.26
BOW CRK HEAVILY ARMED 310A	CE **
BIEBER TORYANNA 289H AOD: 3	GROWTH Sc. G5
MPPA: 100 BIEBER TORYANNA 538E	FRAME Sc. 56+

	CED	BW	WW	YW	MILK	ME	HPG	CEM	STAY	MARB	REA	FAT
EPD	11	-2.6	76	128	30	15	14	7	15	0.46	0.53	0.04
Rank	77%	35%	13%	8%	17%	96%	15%	46%	51%	41%	3%	90%
Wts.		75	605	1135								
Ratio		100	101	103								

EPD Data Generated 9/5/2024

HERDBUILDER RANK	50 59%	GRIDMASTER RANK	75 12%	PROS RANK	125 23%	
------------------	------------------	-----------------	------------------	-----------	-------------------	--

28 BIEBER BLUE CHIP L385

BORN: 5/3/2023 REG: 4847314 100% AR 1A

BIEBER CL STOCKMARKET E119	ADG 2.99
BIEBER BLUE CHIP H302	WDA 2.77
BIEBER ROSE 162C	ASCR 35.77
BIEBER CL ENERGIZE F121	CE ***
BIEBER PRIMROSE 488J AOD: 2	GROWTH Sc. G4
MPPA: 95 BIEBER PRIMROSE 497B	FRAME Sc. 5

	CED	BW	WW	YW	MILK	ME	HPG	CEM	STAY	MARB	REA	FAT
EPD	19	-5.4	65	110	28	1	13	12	14	0.61	0.12	0.06
Rank	2%	4%	53%	36%	30%	38%	29%	1%	60%	18%	55%	99%
Wts.		63	564	1044								
Ratio		96	88	93								

EPD Data Generated 9/5/2024

HERDBUILDER RANK	67 26%	GRIDMASTER RANK	59 32%	PROS RANK	126 22%	
------------------	------------------	-----------------	------------------	-----------	-------------------	--



AGE-ADVANTAGED BULLS

29 BIEBER PAYCHECK L435

BORN: 5/14/2023 REG: 4847716 100% AR 1A

WFL FRANKLY F8276	ADG 3.03
LARR PAYCHECK 0728	WDA 3.01
LARR MISS CC FLOWER 7528	ASCR 34.13
BIEBER GLADIATOR C386	CE ***
BIEBER PRIMROSE 356F AOD: 5	GROWTH Sc. G6
MPPA: 101 BIEBER PRIMROSE 492B	FRAME Sc. 5

	CED	BW	WW	YW	MILK	ME	HPG	CEM	STAY	MARB	REA	FAT
EPD	14	-4.1	85	136	28	8	13	10	10	0.84	0.17	0.05
Rank	29%	13%	2%	4%	30%	78%	29%	9%	93%	4%	44%	93%
Wts.		71	582	1068								
Ratio		92	87	91								

EPD Data Generated 9/5/2024

HERDBUILDER RANK	38	82%	GRID/MASTER RANK	74	12%	PROS RANK	112	41%	
------------------	----	-----	------------------	----	-----	-----------	-----	-----	--

30 BIEBER JUMPSTART L404

BORN: 5/9/2023 REG: 4847396 100% AR 1A

BIEBER CL ENERGIZE F121	ADG 3.03
BIEBER JUMPSTART J137	WDA 3.18
BIEBER GALLEE 390G	ASCR 37.47
BIEBER GLADIATOR C386	CE ***
BIEBER LAURA 266F AOD: 5	GROWTH Sc. G5
MPPA: 98 BIEBER LAURA 101Y	FRAME Sc. 5+

	CED	BW	WW	YW	MILK	ME	HPG	CEM	STAY	MARB	REA	FAT
EPD	19	-6.3	73	116	29	8	15	11	18	0.57	0.41	0.05
Rank	2%	2%	21%	23%	22%	75%	8%	3%	16%	23%	8%	95%
Wts.		71	669	1155								
Ratio		92	100	98								

EPD Data Generated 9/5/2024

HERDBUILDER RANK	83	7%	GRID/MASTER RANK	68	20%	PROS RANK	151	4%	
------------------	----	----	------------------	----	-----	-----------	-----	----	--

31 BIEBER ASSET L506

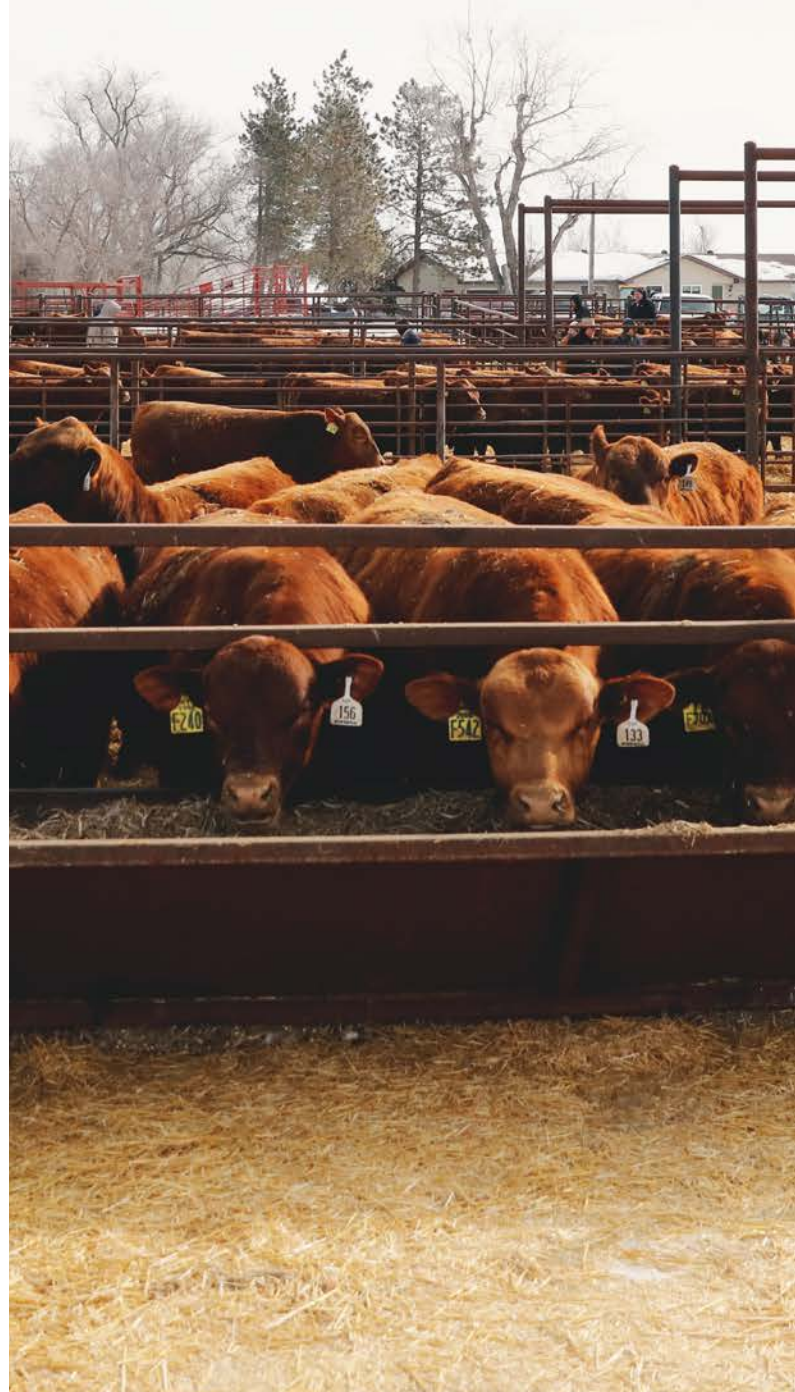
BORN: 6/12/2023 REG: 4847692 100% AR 1A

RED MRLA RESOURCE 137E	ADG 3.3
PIE ASSET 1276	WDA 3.33
PIE RUBY 520	ASCR 38.07
BIEBER SPARTACUS A193	CE *
BIEBER LAURA 524F AOD: 5	GROWTH Sc. G5
MPPA: 92 BIEBER LAURA 112W	FRAME Sc. 5+

	CED	BW	WW	YW	MILK	ME	HPG	CEM	STAY	MARB	REA	FAT
EPD	5	3.0	72	130	25	25	12	3	16	0.72	0.35	0.00
Rank	99%	99%	23%	7%	63%	99%	44%	97%	31%	9%	18%	13%
Wts.		103	617	1146								
Ratio		133	92	98								

EPD Data Generated 9/5/2024

HERDBUILDER RANK	25	94%	GRID/MASTER RANK	116	1%	PROS RANK	142	8%	
------------------	----	-----	------------------	-----	----	-----------	-----	----	--



AGE-ADVANTAGED BULLS

32 BIEBER ENDOWMENT L475

BORN: 5/26/2023 REG: 4847600 100% AR 1A

HXC CHARTER 6610D	ADG 3.4
LSF SRR ENDOWMENT 1011J	WDA 3.19
LSF SRR RAINDANC D6211 G9130	ASCr 36.52
BIEBER CL ENERGIZE F121	CE ***
BIEBER ROSE 130J AOD: 2	GROWTH Sc. G6
MPPA: 99 BIEBER ROSE 301G	FRAME Sc. 5+

	CED	BW	WW	YW	MILK	ME	HPG	CEM	STAY	MARB	REA	FAT
EPD	14	-1.2	80	138	32	16	12	8	15	0.71	0.60	0.01
Rank	37%	62%	6%	3%	6%	97%	32%	38%	52%	10%	2%	43%
Wts.		73	622	1168								
Ratio		108	97	104								

EPD Data Generated 9/5/2024

HERDBUILDER	47	GRIDMASTER	98	PROS	145
RANK	66%	RANK	1%	RANK	7%



33 BIEBER ASSET L403

BORN: 5/9/2023 REG: 4847394 100% AR 1A

RED MRLA RESOURCE 137E	ADG 2.72
PIE ASSET 1276	WDA 2.99
PIE RUBY 520	ASCr 35.97
BIEBER ROLLIN DEEP Y118	CE ***
BIEBER SHEBA 297D AOD: 7	GROWTH Sc. G5
MPPA: 99 BIEBER SHEBA 114A	FRAME Sc. 5

	CED	BW	WW	YW	MILK	ME	HPG	CEM	STAY	MARB	REA	FAT
EPD	15	1.0	73	126	28	8	15	10	14	0.41	0.36	0.03
Rank	24%	92%	20%	11%	25%	74%	7%	6%	62%	51%	17%	76%
Wts.		68	658	1093								
Ratio		88	99	93								

EPD Data Generated 9/5/2024

HERDBUILDER	64	GRIDMASTER	64	PROS	128
RANK	30%	RANK	24%	RANK	19%



34 BIEBER POINT BLANK L493

BORN: 6/2/2023 REG: 4847654 100% AR 1A

WFL MERLIN 018A	ADG 2.99
LRL POINT BLANK H23	WDA 2.91
LRL LAKOTA F143	ASCr 34.75
PIE STOCKMAN 4051	CE ***
BIEBER ROSE 454F AOD: 5	GROWTH Sc. G4
MPPA: 97 BIEBER ROSE 252C	FRAME Sc. 5

	CED	BW	WW	YW	MILK	ME	HPG	CEM	STAY	MARB	REA	FAT
EPD	18	-2.8	66	104	30	-2	8	10	14	0.67	0.06	0.02
Rank	3%	31%	47%	50%	14%	24%	95%	6%	66%	13%	67%	50%
Wts.		59	537	1015								
Ratio		76	80	86								

EPD Data Generated 9/5/2024

HERDBUILDER	54	GRIDMASTER	52	PROS	107
RANK	50%	RANK	46%	RANK	49%




AGE-ADVANTAGED BULLS

35 BIEBER COMPONENT L478

BORN: 5/27/2023 REG: 4847608 99.6% AR 0.4% XX 1B

LSF MEW X-FACTOR 6693D LSF SRR COMPONENT 1112J LSF SRR DOROTHY 489 D6559 BIEBER MAXIMUS E294 BIEBER PRIMROSE 231J AOD: 2 MPPA: 97 BIEBER DURHEIM 171F	ADG 3.4 WDA 3.13 ASCr 35.55 CE ** GROWTH Sc. G5 FRAME Sc. 5+
---	---

	CED	BW	WW	YW	MILK	ME	HPG	CEM	STAY	MARB	REA	FAT
EPD	12	-1.8	74	127	27	16	11	8	13	0.66	0.59	0.06
Rank	69%	50%	18%	10%	38%	97%	50%	28%	74%	13%	2%	98%
Wts.		70	593	1139								
Ratio		104	93	102								

EPD Data Generated 9/5/2024

HERDBUILDER	35	GRIDMASTER	79	PROS	114	
RANK	86%	RANK	8%	RANK	38%	

36 BIEBER PAYCHECK L422

BORN: 5/12/2023 REG: 4847452 100% AR 1A

WFL FRANKLY F8276 LARR PAYCHECK 0728 LARR MISS CC FLOWER 7528 BIEBER ROLLIN DEEPLY118 BIEBER PRIMROSE 242D AOD: 7 MPPA: 106 BIEBER PRIMROSE 151A	ADG 2.84 WDA 3.21 ASCr 38.56 CE * GROWTH Sc. G6 FRAME Sc. 6
--	--

	CED	BW	WW	YW	MILK	ME	HPG	CEM	STAY	MARB	REA	FAT
EPD	8	2.5	97	154	28	16	13	5	11	0.41	0.48	0.00
Rank	96%	98%	1%	1%	31%	97%	23%	83%	87%	51%	5%	24%
Wts.		85	723	1177								
Ratio		110	108	100								

EPD Data Generated 9/5/2024

HERDBUILDER	28	GRIDMASTER	65	PROS	93	
RANK	93%	RANK	22%	RANK	69%	

37 BIEBER FRANCHISE L509

BORN: 6/15/2023 REG: 4847702 100% AR 1A

9 MILE FRANCHISE 6305 PIE FRANCHISE 9031 PIE FAYETTE 7106 BIEBER CLATOMIC C218 BIEBER PRIMROSE 534H AOD: 3 MPPA: 97 BIEBER PRIMROSE 240D	ADG 3.13 WDA 3.05 ASCr 36.17 CE * GROWTH Sc. G5 FRAME Sc. 5+
--	---

	CED	BW	WW	YW	MILK	ME	HPG	CEM	STAY	MARB	REA	FAT
EPD	7	2.4	75	133	29	11	12	6	5	0.52	0.24	0.00
Rank	98%	98%	16%	5%	18%	87%	32%	77%	99%	30%	31%	27%
Wts.		87	565	1068								
Ratio		115	95	97								

EPD Data Generated 9/5/2024

HERDBUILDER	-13	GRIDMASTER	87	PROS	74	
RANK	99%	RANK	4%	RANK	91%	



AGE-ADVANTAGED BULLS

38 BIEBER ASSET L446

BORN: 5/16/2023 REG: 4847488 100% AR 1A

RED MRLA RESOURCE 137E	ADG 3.3
PIE ASSET 1276	WDA 3.09
PIE RUBY 520	ASCR 37.19
BIEBER CL ATOMIC C218	CE *
BIEBER PRIMROSE 541H AOD: 3	GROWTH SC. G6
MPPA: 97 BIEBER PRIMROSE 240D	FRAME SC. 5+

	CED	BW	WW	YW	MILK	ME	HPG	CEM	STAY	MARB	REA	FAT
EPD	10	1.4	81	147	28	20	13	7	12	0.36	0.15	-0.01
Rank	87%	95%	6%	1%	25%	99%	27%	54%	84%	70%	48%	7%
Wts.		75	581	1111								
Ratio		100	97	101								

EPD Data Generated 9/5/2024

HERDBUILDER 25	GRIDMASTER 73	PROS 98	
RANK 95%	RANK 13%	RANK 62%	

39 BIEBER JUMPSTART L390

BORN: 5/8/2023 REG: 4847344 96.9% AR 3.1% XX 1B

BIEBER CL ENERGIZE F121	ADG 2.99
BIEBER JUMPSTART J137	WDA 2.97
BIEBER GALLEE 390G	ASCR 36.94
BIEBER FOREFRONT B281	CE ***
BIEBER DURHEIM 323E AOD: 6	GROWTH SC. G6
MPPA: 102 BIEBER DURHEIM 370A	FRAME SC. 5+

	CED	BW	WW	YW	MILK	ME	HPG	CEM	STAY	MARB	REA	FAT
EPD	16	-3.2	83	143	28	9	13	7	17	0.56	0.66	0.01
Rank	15%	25%	4%	2%	30%	82%	26%	42%	25%	24%	1%	34%
Wts.		65	580	1058								
Ratio		84	87	90								

EPD Data Generated 9/5/2024

HERDBUILDER 66	GRIDMASTER 83	PROS 149	
RANK 27%	RANK 6%	RANK 5%	

40 BIEBER COMPONENT L388

BORN: 5/8/2023 REG: 4847340 100% AR 1A

LSF MEW X-FACTOR 6693D	ADG 3.11
LSF SRR COMPONENT 1112J	WDA 2.97
LSF SRR DOROTHY 489 D6559	ASCR 35.94
BIEBER MAXIMUS E294	CE ***
BIEBER ADELLE 272J AOD: 2	GROWTH SC. G4
MPPA: 99 BIEBER ADELLE 535E	FRAME SC. 5

	CED	BW	WW	YW	MILK	ME	HPG	CEM	STAY	MARB	REA	FAT
EPD	14	-2.2	66	117	28	12	14	10	17	0.57	0.67	0.03
Rank	28%	42%	48%	23%	32%	92%	14%	10%	24%	23%	1%	79%
Wts.		66	621	1120								
Ratio		100	97	100								

EPD Data Generated 9/5/2024

HERDBUILDER 68	GRIDMASTER 97	PROS 165	
RANK 23%	RANK 1%	RANK 1%	

41 BIEBER MR COMPLETE L468

BORN: 5/24/2023 REG: 4847568 100% AR 1A

KJL/CLZB COMPLETE 7000E	ADG 3.71
ALC MR COMPLETE H41	WDA 3.75
PELTON MISS KENDRA X121	ASCR 40.45
BIEBER LB MITIGATOR C314	CE *
BIEBER REBELLA 313E AOD: 6	GROWTH SC. G6
MPPA: 103 BIEBER REBELLA 297A	FRAME SC. 6+

	CED	BW	WW	YW	MILK	ME	HPG	CEM	STAY	MARB	REA	FAT
EPD	5	4.8	93	149	30	14	14	3	18	0.52	0.16	0.02
Rank	99%	99%	1%	1%	16%	95%	13%	99%	11%	30%	46%	55%
Wts.		95	728	1322								
Ratio		122	109	113								

EPD Data Generated 9/5/2024

HERDBUILDER 60	GRIDMASTER 54	PROS 114	
RANK 39%	RANK 41%	RANK 38%	



AGE-ADVANTAGED BULLS

42 BIEBER FLASHDRIVE L425

BORN: 5/12/2023 REG: 4847464 100% AR 1A

BIEBER HARD DRIVE E640	ADG 2.84
BIEBER FLASHDRIVE G266	WDA 2.89
BIEBER FLOWER 312E	ASCR 34.06
PIE STOCKMAN 4051	CE *
BIEBER PRIMROSE 108E AOD: 6	GROWTH SC. G6
MPPA: 98	FRAME SC. 5+
BIEBER PRIMROSE 518C	

	CED	BW	WW	YW	MILK	ME	HPG	CEM	STAY	MARB	REA	FAT
EPD	8	1.7	82	136	28	14	12	7	14	0.80	0.63	-0.02
Rank	95%	96%	5%	4%	30%	94%	42%	54%	64%	5%	1%	3%
Wts.		84	573	1027								
Ratio		108	86	87								

EPD Data Generated 9/5/2024

HERDBUILDER	43	GRIDMASTER	98	PROS	140
RANK	74%	RANK	1%	RANK	9%



43 BIEBER JUMPSTART L407

BORN: 5/10/2023 REG: 4847404 100% AR 1A

BIEBER CL ENERGIZE F121	ADG 2.96
BIEBER JUMPSTART J137	WDA 2.89
BIEBER GALLEE 390G	ASCR 33
BIEBER TIBERIUS E254	CE ***
BIEBER MAID 134H AOD: 3	GROWTH SC. G6
MPPA: 98	FRAME SC. 5
BIEBER MAID 262F	

	CED	BW	WW	YW	MILK	ME	HPG	CEM	STAY	MARB	REA	FAT
EPD	21	-5.8	79	136	32	14	11	12	14	0.34	0.47	0.05
Rank	1%	3%	9%	4%	6%	94%	53%	1%	66%	73%	5%	94%
Wts.		50	587	1062								
Ratio		68	98	96								

EPD Data Generated 9/5/2024

HERDBUILDER	51	GRIDMASTER	58	PROS	109
RANK	57%	RANK	34%	RANK	45%



44 BIEBER COMPONENT L457

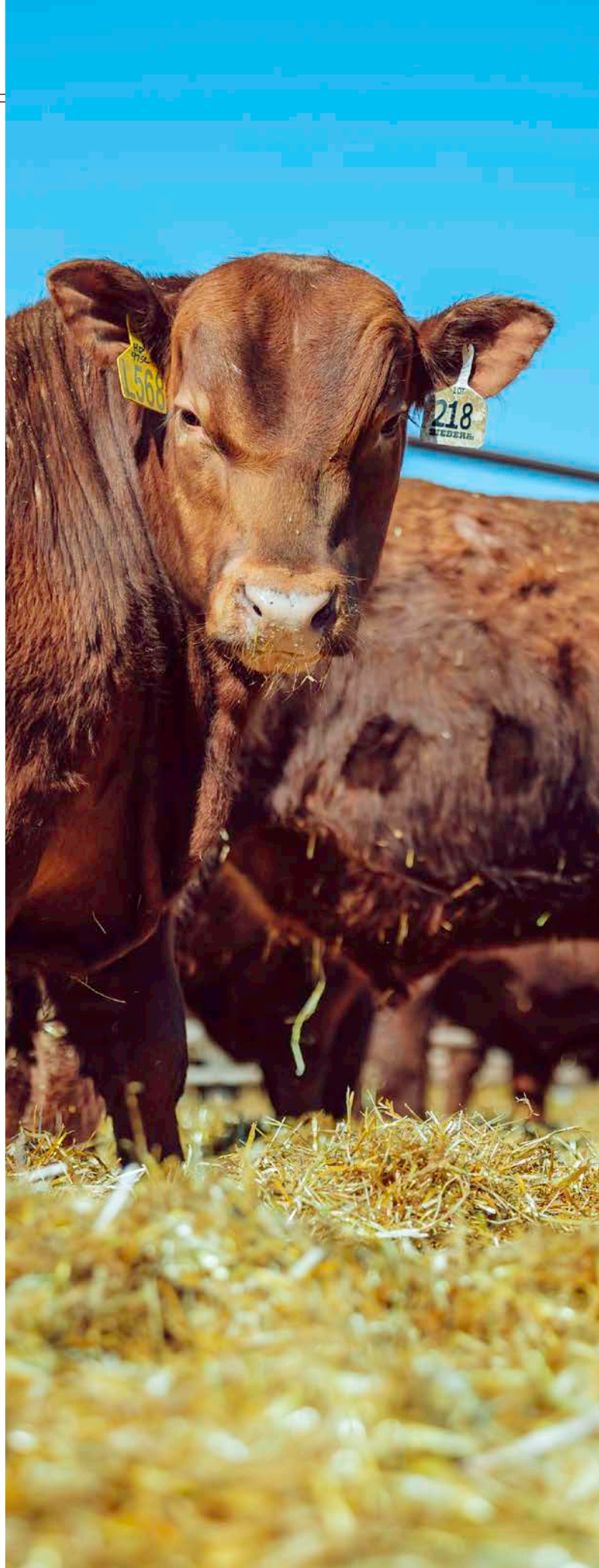
BORN: 5/21/2023 REG: 4847530 100% AR 1A

LSF MEW X-FACTOR 6693D	ADG 2.99
LSF SRR COMPONENT 1112J	WDA 2.81
LSF SRR DOROTHY 489 D6559	ASCR 34.36
PIE FRANCHISE 9031	CE ***
BIEBER SP ANKONY FLORA 404J AOD: 2	GROWTH SC. G3
MPPA: 96	FRAME SC. 5
BIEBER SP ANKONY FLORA 116G	

	CED	BW	WW	YW	MILK	ME	HPG	CEM	STAY	MARB	REA	FAT
EPD	16	-3.0	64	124	29	7	13	10	15	0.70	0.25	0.03
Rank	13%	28%	54%	12%	22%	71%	24%	7%	45%	10%	30%	82%
Wts.		62	574	1054								
Ratio		94	90	94								

EPD Data Generated 9/5/2024

HERDBUILDER	63	GRIDMASTER	90	PROS	153
RANK	32%	RANK	3%	RANK	4%

AGE-ADVANTAGED BULLS



45

BIEBER JUMPSTART L454

BORN: 5/20/2023

REG: 4847520

100% AR 1A

BIEBER CL ENERGIZE F121
BIEBER JUMPSTART J137

BIEBER GALLEE 390G

BIEBER LB MITIGATOR C314

BIEBER TILLY 404E AOD: 6

MPPA: 100

BIEBER TILLY 364Z

ADG 3.45

WDA 3.51

AScr 38.32

CE **

GROWTH Sc. G6

FRAME Sc. 6+

	CED	BW	WW	YW	MILK	ME	HPG	CEM	STAY	MARB	REA	FAT
EPD	10	0.8	89	149	28	27	15	6	15	0.39	0.44	0.00
Rank	83%	91%	1%	1%	26%	99%	5%	72%	57%	55%	6%	24%
Wts.		82	696	1248								
Ratio		106	104	106								

EPD Data Generated 9/5/2024

HERDBUILDER 37 RANK 83% GRIDMASTER 66 RANK 22% PROS 103 RANK 55%



46

BIEBER POINT BLANK L501

BORN: 6/4/2023

REG: 4847674

99.2% AR 0.8% XX 1B

WFL MERLIN 018A
LRL POINT BLANK H23

LRL LAKOTA F143

LOOSLI RIGHT ON 423

BIEBER DURHEIM 111E AOD: 6

MPPA: 94

BIEBER DURHEIM 293C

ADG 3.01

WDA 3.06

AScr 34.81

CE ***

GROWTH Sc. G3

FRAME Sc. 5

	CED	BW	WW	YW	MILK	ME	HPG	CEM	STAY	MARB	REA	FAT
EPD	18	-4.2	60	94	31	1	8	9	12	0.50	-0.02	0.01
Rank	4%	12%	69%	71%	8%	35%	96%	12%	87%	33%	82%	46%
Wts.		68	593	1075								
Ratio		88	89	91								

EPD Data Generated 9/5/2024

HERDBUILDER 31 RANK 89% GRIDMASTER 49 RANK 54% PROS 81 RANK 85%



47

BIEBER JUMPSTART L427

BORN: 5/13/2023

REG: 4847474

100% AR 1A

BIEBER CL ENERGIZE F121
BIEBER JUMPSTART J137

BIEBER GALLEE 390G

BIEBER DRIVEN C540

BIEBER PRIMROSE 226F AOD: 5

MPPA: 105

BIEBER PRIMROSE 151D

ADG 2.48

WDA 2.8

AScr 35.1

CE ***

GROWTH Sc. G6

FRAME Sc. 5

	CED	BW	WW	YW	MILK	ME	HPG	CEM	STAY	MARB	REA	FAT
EPD	16	-3.8	79	120	29	7	15	11	18	0.57	0.35	0.00
Rank	11%	17%	9%	18%	24%	69%	7%	2%	16%	23%	18%	26%
Wts.		68	638	1034								
Ratio		88	96	88								

EPD Data Generated 9/5/2024

HERDBUILDER 90 RANK 3% GRIDMASTER 68 RANK 19% PROS 158 RANK 2%



AGE-ADVANTAGED BULLS

48 BIEBER JUMPSTART L441

BORN: 5/15/2023 REG: 4847726 98.2% AR 1.8% XX 1B

BIEBER CL ENERGIZE F121 BIEBER JUMPSTART J137 BIEBER GALLEE 390G BIEBER SPARTACUS A193 BIEBER DURHEIM 420E AOD: 6 MPPA: 97 BIEBER DURHEIM 350Z	ADG 3.18 WDA 3.35 AScR 35.16 CE *** GROWTH Sc. G6 FRAME Sc. 6
--	--

	CED	BW	WW	YW	MILK	ME	HPG	CEM	STAY	MARB	REA	FAT
EPD	13	-1.0	91	153	27	20	12	8	11	0.25	0.28	0.01
Rank	53%	65%	1%	1%	41%	99%	38%	36%	88%	88%	26%	41%
Wts.		80	697	1206								
Ratio		103	104	103								

EPD Data Generated 9/5/2024

HERDBUILDER RANK	25 94%	GRIDMASTER RANK	51 50%	PROS RANK	76 90%	
------------------	-----------	-----------------	-----------	-----------	-----------	--

49 BIEBER ENERGIZE L386

BORN: 5/5/2023 REG: 4847322 100% AR 1A

BIEBER CL ATOMIC C218 BIEBER CL ENERGIZE F121 BIEBER CLADELLE 575D BIEBER CL STOCKMAN E116 BIEBER GALLEE 356J AOD: 2 MPPA: 100 BIEBER GALLEE 550D	ADG 2.82 WDA 2.82 AScR 33.84 CE *** GROWTH Sc. G6 FRAME Sc. 5+
---	---

	CED	BW	WW	YW	MILK	ME	HPG	CEM	STAY	MARB	REA	FAT
EPD	14	-1.9	80	131	28	11	14	9	13	0.39	0.33	0.03
Rank	29%	48%	7%	7%	27%	87%	11%	19%	77%	55%	20%	82%
Wts.		65	637	1090								
Ratio		98	100	97								

EPD Data Generated 9/5/2024

HERDBUILDER RANK	49 61%	GRIDMASTER RANK	69 18%	PROS RANK	118 32%	
------------------	-----------	-----------------	-----------	-----------	------------	--

50 BIEBER JUMPSTART L462

BORN: 5/23/2023 REG: 4847548 100% AR 1A

BIEBER CL ENERGIZE F121 BIEBER JUMPSTART J137 BIEBER GALLEE 390G STRA FORERUNNER 838 BIEBER LANA 297H AOD: 3 MPPA: 99 BIEBER LANA 447E	ADG 3.47 WDA 3.22 AScR 33.42 CE * GROWTH Sc. G6 FRAME Sc. 5+
--	---

	CED	BW	WW	YW	MILK	ME	HPG	CEM	STAY	MARB	REA	FAT
EPD	7	1.6	94	161	27	32	16	6	12	0.49	0.63	0.02
Rank	98%	96%	1%	1%	39%	99%	4%	75%	85%	35%	1%	63%
Wts.		82	584	1141								
Ratio		109	98	104								

EPD Data Generated 9/5/2024

HERDBUILDER RANK	17 98%	GRIDMASTER RANK	87 4%	PROS RANK	103 54%	
------------------	-----------	-----------------	----------	-----------	------------	--

51 BIEBER JUMPSTART L408

BORN: 5/10/2023 REG: 4847410 100% AR 1A

BIEBER CL ENERGIZE F121 BIEBER JUMPSTART J137 BIEBER GALLEE 390G BIEBER CL STOCKMARKET E119 BIEBER SURPRISE 560H AOD: 3 MPPA: 106 BIEBER SURPRISE 555F	ADG 3.16 WDA 3.14 AScR 36 CE *** GROWTH Sc. G6 FRAME Sc. 5+
--	--

	CED	BW	WW	YW	MILK	ME	HPG	CEM	STAY	MARB	REA	FAT
EPD	14	-2.4	90	152	31	26	14	9	12	0.64	0.68	0.02
Rank	33%	38%	1%	1%	12%	99%	14%	19%	86%	15%	1%	65%
Wts.		68	648	1155								
Ratio		91	109	105								

EPD Data Generated 9/5/2024

HERDBUILDER RANK	25 94%	GRIDMASTER RANK	93 2%	PROS RANK	118 32%	
------------------	-----------	-----------------	----------	-----------	------------	--



RED ANGUS MARKETING PROGRAMS

How to Enroll in FCCP and AA

1. The producer contacts the Red Angus Association of America at (940) 226-4762 and answers a short supplier enrollment questionnaire over the phone. RAAA staff will ask general management, animal identification and breeding questions. If needed, the producer may be asked to supply additional documentation on breeding such as semen receipt, lease agreements or information on purchased females.
2. After all documentation is recorded, staff will ship the tags directly to the producer who must tag the calves before they leave the ranch of origin – birth, branding, preconditioning, weaning or before loading on the semi.
3. The producer will receive a customer enrollment agreement to fill out and return to RAAA with a copy of their calving records.
4. Staff will issue the USDA-approved Certificate of Compliance upon receiving the customer enrollment agreement and calving record.

FCCP Tags
99¢ each

Allied Access Tags
99¢ each

EID Combo Sets
\$3 each

Feeder Calf Certification Program



- Traceability to at least 50% Red Angus genetics
- Source verified to ranch of origin
- Group age verified

Eligible for Choice+ and G.O. Red Grids
No enrollment fee, 99¢/tag
840-compliant EIDs available upon request



**GENETICS
AGE
SOURCE**

Allied Access



- Source verified to ranch of origin
- Group age verified

Not eligible for Choice+ or G.O. Red Grids
No enrollment fee, 99¢/tag
840-compliant EIDs available upon request



**AGE
SOURCE**

The Red Angus Feeder Calf Certification Program is the first step in differentiating your cattle to buyers, feedlots and packers.

Experience industry-leading return on investment for just the cost of an ear tag – with no enrollment fees. The Red Angus Association of America Marketing Team offers assistance to Red Angus bull customers at no charge.

Visit RedAngus.org for contact information.

Red Angus Marketing

- FCCP (Yellow Tag)
- Allied Access (Green Tag)
- Premium Red Baldy (White Tag)
- American Red (Blue Tag)
- Tyson's Choice+ Grid
- Greater Omaha's G.O. Red Grid
- Stockyard
- Feedlot Partners
- Red Angus FeederFax
- Red Angus FeMail
- Calendar of Events



RED ANGUS

RANCH TESTED. RANCHER TRUSTED.

RedAngus.org • (940) 226-4762

REFERENCE SIRES



BIEBER JUMPSTART J137

Jumpstart was the single most sought-after Red Angus bull in the 2022 sale season, commanding \$185,000 to Select Sires and a number of other partners in our Spring Performance Bull Sale. This bull combines elite data with exceptional phenotype. Very few sires offer as much power and muscle shape as he does, yet still rank among the best in the breed for calving ease. Not only is he a true 'specimen' in terms of his physical appearance, but he also has a number set that's projected to offer improvement in nearly every trait. This is a great opportunity at some of the first bulls out of such an elite sire. Make sure to keep an eye on all of the lots out of him.

	CED	BW	WW	YW	MILK	ME	HPG	CEM	STAY	MARB	REA	FAT
EPD	15	-3.1	96	164	30	30	19	9	14	0.42	0.54	0.04
ACC	70	88	78	77	27	30	27	36	34	53	54	42
Rank	25%	26%	1%	1%	18%	99%	2%	20%	61%	49%	8%	87%
	HERDBUILDER 49		GRIDMASTER 69		PROS 118							
	RANK 57%		RANK 22%		RANK 32%		GGP					

BIEBER FLASHDRIVE G266

Flashdrive's first progeny sold last year and have been exciting. They have the kind of growth that will add pounds and stack the carcass. We didn't get a great picture of him, but he was a soggy, thick sire who was easy fleshing and an ideal frame. Flashdrive's sons offer a punch of growth and carcass that we feel offers a lot for the breed.



FLASHDRIVE SON FROM 2024 PERFORMANCE BULL SALE

	CED	BW	WW	YW	MILK	ME	HPG	CEM	STAY	MARB	REA	FAT
EPD	6	3.4	101	164	30	27	17	6	15	1.04	0.76	0.00
ACC	60	78	73	76	25	31	31	41	36	51	45	40
Rank	98%	98%	1%	1%	16%	99%	4%	73%	53%	2%	3%	21%
	HERDBUILDER 44		GRIDMASTER 113		PROS 157							
	RANK 65%		RANK 2%		RANK 6%		GGP					

LARR PAYCHECK 0728

Paycheck was a bull we identified on the Lundgren Angus Sale offering as a top individual. He exhibited a lot of muscle and was a leader for marbling. His progeny have lots of shape and offer the frame to curb mature size if desired, and we think they compliment our offering well. His growth is in the top 1% with outstanding carcass.



PAYCHECK SON FROM 2024 PERFORMANCE BULL SALE

	CED	BW	WW	YW	MILK	ME	HPG	CEM	STAY	MARB	REA	FAT
EPD	11	-0.5	114	190	29	29	10	8	9	0.80	0.60	0.03
ACC	60	77	70	72	19	27	42	33	35	50	45	38
Rank	68%	70%	1%	1%	23%	99%	71%	33%	96%	7%	6%	73%
	HERDBUILDER 2		GRIDMASTER 93		PROS 95							
	RANK 97%		RANK 6%		RANK 59%		GGP					

REFERENCE SIRES



ASSET SON FROM 2024 PERFORMANCE BULL SALE

PIE ASSET 1276

We bought Asset 1276 from the Pieper sale in 2020. Asset's dam is the famed PIE Ruby 520 cow who is also the dam of Quarterback and several high selling bulls from the Pieper program. The Resource line is known for its great maternal qualities and for producing females that really work in a range environment.

	CED	BW	WW	YW	MILK	ME	HPG	CEM	STAY	MARB	REA	FAT
EPD	9	1.4	73	137	31	22	14	6	15	0.12	0.05	0.00
ACC	61	79	72	73	23	28	18	34	36	52	47	37
Rank	87%	91%	29%	7%	14%	99%	18%	63%	53%	94%	64%	18%
HERDBUILDER	38		GRIDMASTER 65		PROS 103							
RANK	74%		RANK 27%		RANK 50%							



LSF SRR COMPONENT 1112J

We purchase Component in the LSF Herdbuilder sale in 2022. He had been a high libido sire with excellent GridMaster data which was what really caught our eye. This sire will add tremendous carcass to your calf crop.

	CED	BW	WW	YW	MILK	ME	HPG	CEM	STAY	MARB	REA	FAT
EPD	13	-3.5	67	119	29	15	13	8	14	0.77	0.43	0.06
ACC	54	57	55	57	24	17	31	29	34	44	42	34
Rank	46%	21%	46%	26%	21%	94%	34%	29%	67%	9%	13%	96%
HERDBUILDER	39		GRIDMASTER 82		PROS 121							
RANK	72%		RANK 11%		RANK 29%							



BIEBER BLUE CHIP H302

Blue Chip H302 was the second high-selling bull in the 2021 Performance Bull Sale going to Select Sires. His dam produces a lot of style and we are certain Blue Chip will not disappoint. He was added to the Select Sires line up as a sure shot calving ease sire, but also offers growth and carcass.

Thank You

FOR SUPPORTING AND ATTENDING BIEBER FEVER IN THE SOUTHEAST. IF YOU HAVE ANY QUESTIONS, YOU CAN CONTACT US AT (605) 439-3628.

	CED	BW	WW	YW	MILK	ME	HPG	CEM	STAY	MARB	REA	FAT
EPD	20	-6.5	68	111	29	0	10	13	18	1.02	0.44	0.06
ACC	72	85	77	77	29	31	33	35	37	49	51	38
Rank	2%	2%	44%	41%	27%	29%	71%	1%	17%	2%	12%	97%
HERDBUILDER	85		GRIDMASTER 84		PROS 169							
RANK	8%		RANK 10%		RANK 3%							



Research Validates Red Angus as Most-Favored Female

Ranchers across the country have long recognized the value of Red Angus females as the foundation of a profitable cowherd. Now, independent research validates those years of cattle production experience with tangible data proving the Red Angus heifer's worth.

Research Confirmation

Esther McCabe, et al., of Kansas State University, led a study that confirmed Red Angus are the most-favored female in the industry. McCabe and her team compiled five years' worth of pricing data from Superior Livestock Auction, comparing 13,804 lots of heifer calves totaling over 1.2 million head that sold in 116 video auctions.

The research team evaluated the effects of independent variables on the sale price of heifer calves that fell into six different breed composition groups: English, English crosses, English-Continental crosses, Black Angus-sired out of dams with no Brahman influence, Red Angus-sired out of dams with no Brahman influence, and Brahman-influenced.

They deduced that Red Angus-sired heifer calves bring \$5 to \$9 more per hundredweight than all other breed types.

Rancher Trusted

While market research validates the price advantage of Red Angus heifers, ranchers have tested and trusted her worth on the range for years. Red Angus females are desirable as replacement heifers because they mature into productive mother cows that reward producers with extra dollars in their pockets on sale day.

Red Angus cows have gained ranchers' trust as a complete package through fertility, fleshing ability, good disposition, longevity and excellent overall production. They produce feeder calves that earn premiums in the yard and on the rail through docility, feed efficiency, conversion and carcass merit.

Over the years, stockmen have voted with their checkbooks, purchasing heifers they know will bring profitability to their ranching businesses – and Red Angus females are their most-favored choice. ■



Independent research studying five years of Superior Livestock Auction data confirms the value of Red Angus replacement females.

Red Angus Stockyard

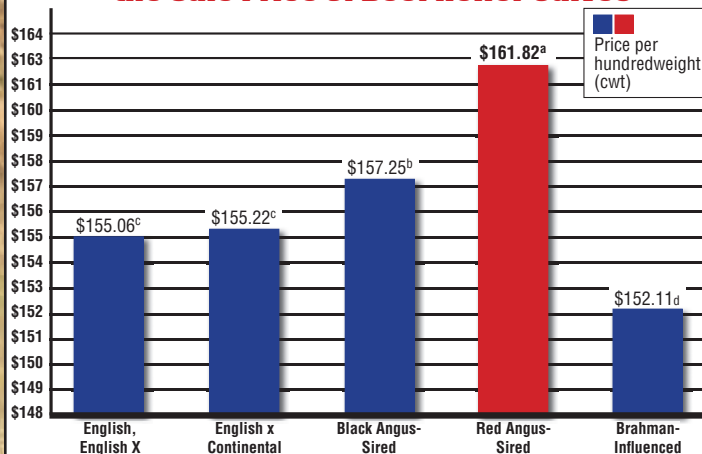
List or locate quality Red Angus replacement females at stockyard.redangus.org. Over 20,000 head of cattle are sold each year through the Red Angus Stockyard.

FeMail

An electronic tool to help locate or market ranch-tested replacements. Market your open heifers, bred heifers or cows, or cow-calf pairs. FeMails are designed for offerings of 25 head of more to complement listings on the Red Angus Stockyard.



Breed and Gender Interact to Affect the Sale Price of Beef Heifer Calves*



* McCabe, et al., 2016. Breed and gender interact to affect the sale price of beef calves sold through video auctions from 2010 through 2014. J. Animal Science, Volume 94, Supplement 2, pp 28.
^{abcd} Means with unlike superscripts differ (P<0.05).

Bieber Igenity[®]

One Test- 4 Valuable Uses

- Replacement Selection** -Receive clear, actionable scores on 17 maternal, performance and carcass traits. Keep the heifers that will add profit to your operation.
- Seedstock Decisions** -Easily characterize the strengths and weaknesses of your herd to better match bull and female purchases to your specific needs.
- Determine Parentage** -Determine which bulls are doing the best job. Not only which bulls are breeding more cows, but also the quality of their calves.
- Value-Added Marketing** -Use the results to verify the genetic value of your calves to buyers or to make retained ownership and marketing decisions for yourself.

Includes **FREE** genetic
consultation from



Igenity[®] Beef

Uncover Your Herd's Potential

Igenity Beef provides the genetic insight to be **confident** in your selection.

Scan to learn more and **uncover their potential**
Neogen.com/Igenity-beef



800.621.8829 (USA/Canada) • 859.254.1221

Neogen Corporation, 620 Leshar Place, Lansing, MI 48912 USA. © Neogen Corporation 2024.
All rights reserved. Neogen and Igenity are registered trademarks of Neogen Corporation.

Red Angus Guide to EPDS and Indexes

ProS... Profitability and Sustainability is an all-purpose index that predicts average economic differences in all segments in the beef supply chain. This index is a combination of the breeding objectives modeled in the HerdBuilder and GridMaster selection indexes. In this index, replacement heifers are retained from within the herd and all remaining progeny are fed out to slaughter and sold on a quality-based grid. Traits included in this index include calving ease, growth, HPG, STAY, Mature Weight, Dry Matter Intake and carcass traits. The resulting index is expressed in dollars per head born (Index/High Value).

HB HerdBuilder is a maternal selection index that predicts the economic differences of animals for traits that are important from conception through weaning. Expressed as dollars per head born, HB is calculated based on the scenario that bulls are mated to heifers and cows, replacement heifers are retained and all remaining progeny are marketed at weaning. Traits included in the HB index include Calving Ease Direct, Calving Ease Maternal, Weaning Weight, Milk, Mature Weight, Heifer Pregnancy and Stayability (Index/High Value).

GM..... GridMaster is a selection index that predicts the average economic difference of non-replacement calves through the post-weaning phase of production. GM places selection pressure on growth, feedyard performance and carcass traits. Expressed as dollars per head born, GM is calculated based on the scenario that progeny are fed out to slaughter and marketed on a quality-based carcass grid. Traits included in GM include Average Daily Gain, Carcass Weight, Dry Matter Intake, Marbling, Back Fat and Rib Eye Area (Index/High Value).

CED Calving Ease Direct predicts differences in the percent of calves born unassisted out of 2-year-old dams. (Percent/High Value)

BW Birth Weight predicts differences in actual birth weight of progeny. (Pounds/Low Value)

WW Weaning Weight predicts differences in 205-day weaning weight. (Pounds/High Value)

YW Yearling Weight predicts differences in 365-day yearling weight. (Pounds/High Value)

ADG Average Daily Gain predicts differences in weight gain between 205 and 365 days of age. (Pounds/High Value)

DMI Dry Matter Intake predicts differences in daily feed intake as measured in a feedlot during the post-weaning period. (Pounds/Low Value)

MILK Milk predicts differences in weaning weight attributed to the milking ability of the animal's daughters. (Pounds/High Value)

ME Maintenance Energy predicts the difference in maintenance energy requirements. (Mcal per Month/Low Value)

HPG Heifer Pregnancy predicts differences in the percent of daughters who are able to conceive and calve at 2 years of age following exposure to breeding. (Percent/High Value)

CEM Calving Ease Maternal predicts differences in the percent of daughters who are able to calve unassisted as 2-year-old heifers. (Percent/High Value)

STAY Stayability predicts differences in the ability of an animals' retained daughters to remain productive in the herd – calve every year – through 6 years of age. (Percent/High Value)

MARB Marbling predicts differences in marbling score – amount of intramuscular fat measured at the 13th rib. (Marbling Score Units/High Value)

YG Yield Grade predicts differences in USDA Yield Grade, which is calculated using CW, REA and Fat. (Yield Grade Units/Low Value)

CW Carcass Weight predicts differences in actual hot carcass weight. (Pounds/High Value)

REA Ribeye Area predicts differences in square inches of ribeye area measured at the 13th rib. (Square Inches/High Value)

FAT Fat predicts differences in the depth of backfat measured between the 12th and 13th ribs. (Inches/Low Value)

RE³ ANGUS

RANCH TESTED. RANCHER TRUSTED.

RedAngus.org



HOW TO READ THE DATA

1


BIEBER FOREFRONT J143

BORN: 1/21/2021 REG: 4464481 100% AR 1A

ANDRAS FUSION R236		ADG 4.11	135
BIEBER FOREFRONT B281		WDA 3.33	120
BIEBER LAURA 112W		ASCR 37.36	
BIEBER SPARTACUS A193		CE ***	
BIEBER ADELLE 525G AOD: 2		GROWTH Sc. G6	
MPPA: 104	BIEBER ADELLE 297Y	EPD Data Generated 1/25/2022	

	CED	BW	WW	YW	MILK	ME	HPG	CEM	STAY	MARB	REA	FAT
EPD	15	-3.8	80	143	29	13	10	8	17	0.70	0.18	0.03
Rank	15%	16%	2%	1%	17%	95%	62%	27%	26%	5%	37%	68%
Wts.		65	659	1319								
Ratio		89	109	120								

HERDBUILDER	58	GRIDMASTER	86	PROS	144
RANK	39%	RANK	1%	RANK	1%



This lot offers excellent growth to any operation.

1. Lot Number - This is the lot number of the animal. Cattle will have a white tag that will correspond to that number. Generally cattle will sell in lot number order.

2. Name - This is the registered name of the animal. Generally we name bulls after the sire and females after the dam.

3. Born - This is the birth date of the animal.

4. Reg - This is the Registration number of the animal. All Red Angus animals can be looked up on the Red Angus website by going to the animal search page and using this registration number.

5. Breed - This area has the breed composition and category as determined by the Red Angus Association of America. Breed Codes are:

- AR = Red Angus
- SM = Simmental
- XX = Unknown

The Unknown cattle are largely cattle we weren't able to prove parentage on in the Durheim herd. The unknown breed is either Simmental or Red Angus in the Durheim foundation cattle.

6. Category - This is the category as defined by the Red Angus Association. Categories are:

- 1A = 100% Red Angus with no disqualifying features.
- 1B = 87% to 99.9% Red Angus with no disqualifying features.
- II = Equal to or greater than 87% up to and including 100% Angus blood content having one or more disqualifying features. Disqualifying Features include scurs or horns, ineligible white, black pigment, progeny of multiple sire groups, and missing birth date, or weaning weight and date.
- III = Less than 87% Angus blood content.

7. Sire - Sire of the animal.

8. Paternal Grand Sire - Sire of the Sire.

9. Paternal Grand Dam - Dam of the Sire.

10. Dam - Dam of the animal.

11. Maternal Grand Sire - Sire of the Dam.

12. Maternal Grand Dam - Dam of the Dam.

13. MPPA - Most Probable Producing Ability. An estimate of a cow's future productivity for a trait (such as progeny weaning weight ratio) based on her past productivity. For example, a cow's MPPA for weaning ratio is calculated from the cow's average progeny weaning ratio, the number of her progeny with weaning record, and the repeatability of weaning weight.

14. AoD - Age of Dam at the time of weaning.

15. ADG - Average Daily Gain. Measurement of daily body weight change over a specified period of time of an animal on a feed test.

16. ADG Ratio - Average Daily Gain Ratio. The ratio of the animal within its contemporary group. ET and Twins will be marked with a TW and ET. These animals have no contemporary group.

17. WDA - Weight Per Day of Age. Weight of an individual divided by days of age.

18. WDA Ratio - Weight Per Day of Age Ratio. Weight of an individual divided by days of age. ET and Twins will be marked with a TW and ET. These animals have no contemporary group.

19. ASCr - Adjusted Scrotal Circumference. A measure of testes size obtained by measuring the distance around the testicles in the scrotum with a circular tape. Related to semen-producing capacity and is adjusted to Yearling age. Actual Scrotal Measurement are provided on a supplement sheet at the sale.

20. CE - Calving Ease Score. This is our recommendation for CE based upon the data and the pedigree.

*** = Use on heifers; expect less calving difficulty.
** = Use on grower/heifers and cows. Expect moderate calving difficulty on heifers and very little on cows.
* = Use on cows; expect calving difficulty on heifers and some to very little on cows.

21. Growth Sc. - Growth Score. This is our recommendation for growth based upon the data and the pedigree.

- G6 = Maximum growth rating.
- G5 = High growth rating.
- G4 = Moderately high growth rating.
- G3 = Average growth rating.
- G2 = Below average growth rating.
- G1 = Low growth rating.

22. EPD Data Generated - The date this EPD data was pulled from the Red Angus Association website.

23. EPD - Expected Progeny Difference. The difference in expected performance of future progeny of an individual, compared with expected performance of future progeny of an individual of average genetic merit in the base time frame for the genetic evaluation.

EPDs are estimated from phenotypic merit of an individual and all of its relatives and are estimates of one-half the breeding values. EPDs are generally reported in units of measurement for the trait (e.g. lb., in., etc.).

acc - Accuracy. A measure of the reliability of an EPD. Accuracy values are reported as decimal numbers between zero and one. Values closer to one indicate larger amounts of available information and greater certainty that a bull's EPDs will not change significantly as more progeny information becomes available. Bieber Red Angus reports the accuracy values for sires since they have high accuracies. EPDs are a more reliable estimate of performance than weight, ratios or other measurements.

24. Rank - This is the percentage rank of the EPD within the type of animal. Rank groups include Proven and Opportunity Sires, Active Dams, and Non Parent under Two Years of Age.

25. Wts - Weight. The weight for that trait in that column adjusted to a constant days of age by Red Angus Association and Beef Improvement standards.

26. Ratio - The ratio for that trait in that column within its contemporary group. ET and Twins will be marked with a

TW and ET and have no contemporary group.

27. CED - Calving Ease Direct. Predicts the probability of calves being born unassisted out of two-year-old heifers. Producers want live calves born unassisted. Selecting on actual birth weight is flawed; it is influenced by non-genetic factors such as nutrition and weather (ambient temperature). While BW EPD removes these non-genetic factors, Red Angus CED EPD is the best predictor of calving ease. The CED EPD includes variation in BW plus other influential genetic factors such as gestation length, calf shape, etc.

28. Birth Weight EPD - Predicts the difference, in pounds, for birth weight, and is also used in the calculation of the Calving Ease Direct (CED) EPD.

29. BW - Birth Weight. The actual weight in pounds at birth.

30. Weaning Weight EPD - Predicts the difference, in pounds, for weaning weight (adjusted to age of dam and a standard 205 days of age). This is an indicator of growth from birth to weaning.

31. WW - Weaning Weight. The 205 adjusted weight. This is an indicator of growth up to weaning.

32. Yearling Weight EPD - Predicts the expected difference, in pounds, for yearling weight (adjusted to a standard 365 days of age). This is an indicator of growth from birth to yearling.

33. YW - Yearling Weight. The 365 adjusted weight. This is a measure of growth from birth to yearling.

34. Milk EPD - Predicts the difference in maternal production of an individual animal's daughters as expressed by the weaning weight of their calves.

35. ME EPD - Maintenance Energy. Predicts the difference in daughters' maintenance energy requirements and is expressed in Mcal/Month. Recognizing that 70% of cowherd feed costs are burned up in maintaining weight and condition, Red Angus' ME EPD allows for the selection of bulls whose daughters will require less feed; thus, reducing cowherd expenses. Includes selection pressure for ME EPD to ensure feed costs don't get out of line when selection is made for greater performance and production. At Bieber Red Angus we collect a cow weight at weaning time to ensure greater accuracy of this EPD.

36. HPG EPD - Heifer Pregnancy. Predicts the probability of heifers conceiving to calve at two years of age. Many breeds offer genetic predictions of yearling bull scrotal circumference as an indicator of age of puberty. While puberty is a prerequisite, many factors influence pregnancy rate. Red Angus' HPG EPD offers a tool which selects for what is economically relevant to ranchers - pregnant heifers. At Bieber Red Angus we submit all heifer breeding data to ensure the accuracy of this EPD.

37. CEM EPD - Calving Ease Maternal. Predicts the probability of a given animal's daughters calving unassisted at two years of age. Replacement heifers should be able to calve on their own. Red Angus' CEM EPD offers the industry's most reliable prediction to address that concern.

It includes not only the predisposition for a female to calve unassisted, but also her contribution to her calf's traits that make it more likely to be born unassisted.

38. STAY EPD - Stayability. Predicts the probability of a bull's daughters remaining productive until at least six years of age. Why six? That's how long it takes a female to breakeven given all the expenses of development.

39. MARB EPD - Marbling. Predicts differences for carcass marbling score as expressed in marbling score units. Higher marbling scores are positively correlated with higher carcass quality grades.

40. REA EPD - Rib Eye Area. Predicts differences of carcass Rib Eye Area between the 12th and 13th rib. Increased Rib Eye Area has a beneficial effect on Yield Grade which also includes Carcass Weight and Fat Thickness.

41. FAT EPD - 12th Rib Fat Thickness. Predicts differences for carcass fat depth over the 12th rib, as expressed in inches. Increases in fat thickness have a detrimental effect on Yield Grade. Fat thickness measured in young seedstock may be an indicator of fleshing ability.

42. HerdBuilder Index - As the name indicates, implementation of the HerdBuilder Index will assist producers in building profitable herds. The HerdBuilder Index is built using the following production scenario:

- Red Angus bulls mated to cows and heifers (resulting progeny ¾ Red Angus, ¼ Simmental).
- Replacement heifers retained from within the herd.
- All remaining progeny sold on a quality-based carcass grid.

43. GridMaster Index - While Red Angus has traditionally been known as a superior maternal breed, those who have retained ownership in Red Angus calves know of their potential to excel in the feedyard and ultimately hang a premium carcass. The GridMaster Index is built using the following production scenario:

- Red Angus bulls mated to cows (resulting progeny ¾ Red Angus, ¼ Simmental)
- All progeny sold on a quality-based carcass grid

44. ProS Index - Profitability and Sustainability is an all-purpose index that predicts average economic differences in all segments in the beef supply chain. This index is a combination of the breeding objectives modeled in the HerdBuilder and GridMaster selection indexes. In this index, replacement heifers are retained from within the herd and all remaining progeny are fed out to slaughter and sold on a quality-based grid. Traits included in this index include calving ease, growth, HPG, STAY, Mature Weight, Dry Matter Intake and carcass traits. The resulting index is expressed in dollars per head born (Index/High Value).

45. Top Dollar - A third party evaluation on growth and carcass traits of an animal. Lots with this logo rank in the top 25% of the breed for growth and carcass EPD traits.

46. DNA - The DNA test submitted on this animal for parentage and genomically enhanced EPDs.

47. Footnote - This is information we would like to point out about the lot. It may contain breeding information on bred cattle.

LEGAL TERMS AND CONDITIONS

The Red Angus Association Terms and Conditions will apply if the terms and conditions printed here are not applicable.

BIDDING DISPUTES: The auctioneer in charge will settle any disputes as to bids. His decision on such matters shall be final.

TERMS: The terms of the sale are cash; the right of property shall not pass until after settlement is made. All settlements will be made with the clerks of the sale immediately following the conclusion of the sale and before any cattle will be released from the ranch.

RETAINED INTEREST: We are retaining 1/2 interest in all bulls in the sale. We are selling the remaining 1/2 interest, full possession, and full salvage value on these bulls. This option gives Bieber Red Angus Ranch the option to collect, use and market semen from the bull, and does not restrict the purchaser from doing the same. This collection, unless agreed otherwise, would be done at the expense of Bieber Red Angus Ranch, at the buyer's convenience. Also at the time of purchase, the highest bidder on a retained interest bull may elect to purchase exclusive semen rights for 100% of the purchase price in addition to the purchased price on retained bulls. If a buyer elects to purchase exclusive semen rights, Bieber Red Angus Ranch's interest then becomes in herd use only. Bieber Red Angus Ranch retains all rights to use the bull within their herd.

SEMEN RIGHTS: Buyers receive semen rights proportional to the interest purchased. If you purchase a 1/2 interest, then you are entitled to 1/2 of the semen collections at cost, provided that you indicate you want semen prior to collection. We intend to collect some of the bulls in the sale and sample them in our herd. We will cooperate with the buyer in collection of the bull. We prefer to collect most bulls after the first season of use, and we will contact the buyer when we intend to collect the bull at a time convenient for the buyer.

PURCHASER'S RISK: Each animal becomes the risk of the purchaser as soon as sold. Animals will be fed, watered and cared for at the purchaser's risk for a reasonable time.

CERTIFICATE OF REGISTRY: A certificate of registry and transfer will be furnished for each animal sold as a registered animal, after settlement has been made.

HEALTH: All cattle will have official health certificates and will sell guaranteed export to Canada. Canadian health certificates will be charged at cost on animals selling under \$4000.

ANNOUNCEMENTS: Changes of information contained in this catalog relating to the animals offered for the sale will be announced from the auction block and such announcements shall take precedence. Errors discovered in the catalog will be corrected by announcements at sale time, and such corrections will take precedence over the printed matter in this catalog.

BREEDER'S GUARANTEE: 1. All animals are guaranteed breeders, with the exception of: a) calves under twelve months of age; b) animals shown by Purchaser after sale (in cases of animals shown after purchase, the breeding guarantee, if any, shall be such as agreed upon between Seller and Buyer) c) any open heifer that has been flushed for embryo transfer; or d) gross negligence or willful misconduct on the part of the Purchaser. 2. Bulls are guaranteed breeders if not allowed to run with the herd until at least 14 months of age. Any bull which either: a) settles 1/3 or more of the healthy cows he serves; b) is the sire of 20 or more animals; or c) settles cows by natural service and passes a fertility test made by a competent veterinarian during any 6 month period of trial (provided for in paragraph 2 of the section of these sale terms and conditions entitled "Options and Privileges of Return or Adjustment") shall be considered a breeder.

Any guarantee with respect to the ability to freeze semen shall be by separate agreement between Buyer and Seller.

All guarantees are limited to the amount of the purchase price.

Open females have not been served and are so guaranteed.

IDENTIFICATION: Each animal carries an EID tag for identification. That EID corresponds with the ID of the animal and is recorded with the Red Angus Association. Tag numbers on the cattle correspond with lot numbers in this catalog. Purchaser agrees to use full name of animal in advertising and on stall cards at shows.

OPTIONS AND PRIVILEGES OF RETURN OR ADJUSTMENT:

1. All claims for adjustment or refund must be made in writing either within six months of the sale date or no later than six months after the animal reaches 18 months of age, with the exception of claims involving defects or parentage.

2. In the event an animal is claimed to be a non-breeder, the animal may be returned to the farm of the Seller if in good condition and complying with the health requirements of the Seller's state. The Seller shall be entitled to six months' trial following the return of the animal in which to prove the animal is a breeder. The Seller shall, at the option of the Buyer, replace the animal with another of equal value or grant the Buyer a credit for use on any products marketed by the Seller. Such credit of the full purchase price shall in any case be deemed full satisfaction and settlement. Any expense incurred for transporting an animal claimed to be a non-breeder shall be the responsibility of the Purchaser, except that the Seller shall be responsible for the transportation costs in excess of the distance between the Purchaser's farm and the location where the sale took place. If the Seller proves the animal is a breeder, it shall be the obligation of the Purchaser to take delivery of the animal and pay all expense incurred for transportation.

3. If a female sold as "safe in calf" proves not to be in calf, the Purchaser may receive service from the bull previously used, if available, or if the bull is not available, the Seller shall be obligated to make a satisfactory adjustment on the purchase price upon return of the animal to the farm of the Seller. Any adjustment provided for herein shall absolve the Seller from further liability, except in case such female proves to be a non-breeder. If a female represented as "safe in calf" at time of sale to a certain bull proves to have been bred to a different bull, the Seller shall be obligated to take a satisfactory adjustment on the purchase price upon return of the animal to the farm of the Seller (adjustments shall not be considered to a breeding fee or an allocation of the purchase price to any unborn calf). Any expenses incurred for transportation shall be the responsibility of the Purchaser, except that the Seller shall be responsible for the transportation costs in excess to the distance between the Purchaser's farm and the location where the sale took place.

4. If a female sold as "served" proves not to be in calf, or if a female sold as "pasture-bred" proves not to be in calf, the Seller only guarantees such female to the breeder.

5. If a female sold as "open" proves to be with calf, the Purchaser may return the animal to the farm of the Seller prior to calving for a credit of the full purchase price or for another animal of equal value, whichever is acceptable to the Purchaser. It shall be the obligation of the Seller to bear any expense incurred for transportation.

LIABILITY: Neither owners, sale managers, clerks nor anyone connected with the sale assumes responsibility, legal or otherwise, for damages of any kind.

CONTRACT: The above terms and conditions shall constitute a contract between the buyer and seller of each animal sold.

IMPLIED WARRANTY: Except for those stated in the terms and conditions, there are no warranties, either expressed or implied, as to merchantability or fitness for a particular purpose with respect to the cattle being sold in this auction. The warranties set forth in terms and conditions are in lieu of all other warranties, either expressed or implied, and the remedies proved therein shall be the sole and exclusive remedy of the buyer, or any part claiming through buyer, for any breach of warranty or guarantee therein provided and all other obligations or liabilities.



WE LOOK FORWARD TO SEEING YOU IN NOVEMBER FOR OUR...

Bieber Fever

FALL FEMALE & BULL SALE

THURSDAY, NOVEMBER 14, 2024

ONLINE OR IN PERSON AT THE RANCH NEAR LEOLA, SD



BIEBER RED ANGUS RANCH

Craig and Peggy Bieber
11450 353rd Ave. Leola, SD 57456



LOT 4 BIEBER FLASHDRIVE L424



LOT 1 BIEBER ASSET L396

Mark your calendars for our Fall Female & Bull Sale at the Ranch near Leola, SD

November 14, 2024

Featuring bred heifers and cows, commercial heifers, and age-advantaged bulls.