

Bieber Fever

ONLINE FEMALE SALE

APRIL 16-17, 2025

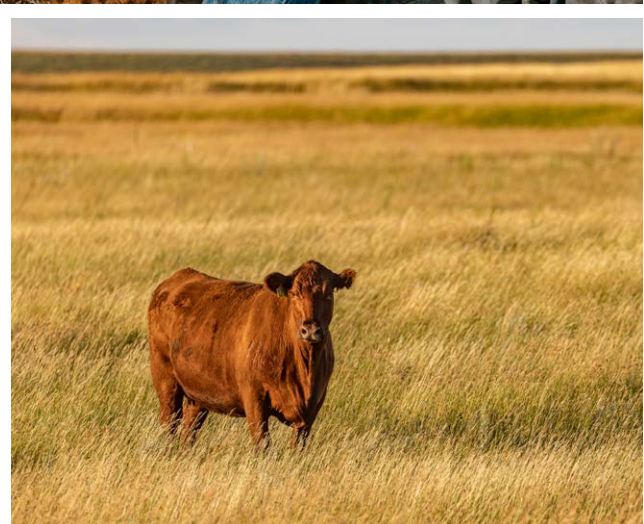
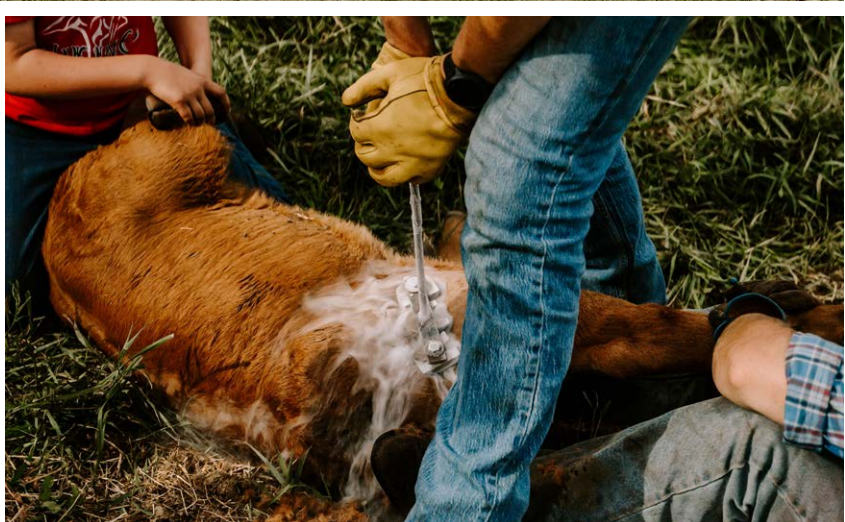
ONLINE ONLY THROUGH DVAuction



BIEBER®

Office (605) 439-3628 • Craig (605) 216-8169
11450 353rd Ave. Leola, SD 57456

**Red
Angus
Ranch**



SALE INFORMATION

BIEBER RED ANGUS CONTACTS

Bieber Red Angus Office.....(605) 439-3628
Craig Bieber.....(605) 216-8169
Jake Harms.....(605) 929-6686
Craig Howard.....(605) 377-3128
Peggy Bieber.....(605) 380-8169
Kristin Harms.....(605) 380-4408
DVAuction.....(402) 316-5460

RED ANGUS BREED ASSOCIATION

Tom Brink, CEO.....(940) 387-3502
Kelly Smith.....(417) 855-9461

ABSENTEE BIDDING

If you are unable to bid during the auction time frame, or feel uncomfortable doing so through the online format, the Bieber Red Angus team will be available to bid for you. You can contact any staff listed under the BIEBER RED ANGUS CONTACTS section to bid.

HEALTH

All cattle are on a complete vaccination program supervised by Ashley Vet Clinic. We have tested our replacement heifers for BVD since 2014 as part of our surveillance program and found no positive BVD carriers. Bieber Red Angus participates in the Beef Quality Assurance (BQA) program. Heifer calves have been Bangs vaccinated. We participated in a Johnes testing program for 10 years with no confirmed positives. We no longer test for Johnes disease but continue to diligently watch for any suspicious cases and test as necessary.

GENETIC DEFECTS

Every animal in the sale is guaranteed negative for the recessive gene associated with Osteopetrosis(OS), Arthrogryposis Multiplex(AM) (Curly Calf Syndrome), Neuropathic Hydrocephalus (NH) and any other known genetic defects. With this guarantee, we provide our customers the opportunity to purchase their choice of cattle with very little risk. DNA samples have been collected on every animal in the sale with any known carrier in the first three generations and tested negative unless otherwise noted.

BREEDING DATA

Breeding data on the bred females, including sex of pregnancy and date of calving, is verified by ultrasound and is an estimate. Many years of ultrasound data has proven it is 99% accurate. This data is verified to the best of the veterinarian's ability depending on embryo age.

COLOR

All animals are red unless otherwise indicated in the footnotes.

DELIVERY POLICY

Please review our delivery policy on Page 2 for info on delivery costs and central delivery points.

SCHEDULE OF EVENTS

WEDNESDAY, APRIL 16

7:00 am CDT — Online bidding opens for the Pregnant Recips & Fall Bred Cows
7:00 pm CDT — Online bidding closes for the Pregnant Recips & Fall Bred Cows

THURSDAY, APRIL 17

7:00 am CDT — Online bidding opens for the Open Heifers & Commercial Bred Cows
7:00 pm CDT — Online bidding closes for the Open Heifers & Commercial Bred Cows

SALE BROADCAST

The sale will be an online only timed auction and broadcast through DVAuction.

AUCTION FORMAT

The sale will be hosted entirely online at www.DVAuction.com. All lots will close at 7:00 pm CDT on their respective closing dates.

- Fall Bred Cow & Pregnant Recip lots will close at 7:00 pm CDT on April 16
- Open Heifer & Commercial Bred Cow lots will close at 7:00 pm CDT on April 17

If any lot is bid on within 5 minutes prior to 7:00 pm CDT on the closing date, bidding will be extended for an additional 5 minutes on all lots. Bidding will then close when there are no bids placed on any lots for a period of 5 minutes.

BIDDING PROCEDURES

Follow these steps to apply for bidding prior to the start of the sale.

1. Make sure you have an active DVAuction account. Log into www.dvauction.com any day and make sure your login still works. You will not be allowed to watch or bid on this sale if you cannot log into DVAuction.
2. Once you are logged into the home page for DVAuction, you will see your name listed at the upper left corner of the page. This is the same area where you entered your user name and password. Below your name you will see the 'Apply for Bidding' link. Click on this link. It will take you to a page that shows all upcoming sales. If this sale is in the list with the word Approved in front of it, you are ready to bid. If not, click the box next to the sale and scroll down to the bottom of the page to click Apply for Bidding. You will now see a green bar at the top saying 'Your request for approval has been received.' Check your status on the sale. If it says Approved in front of the sale, you are ready to bid. If it does not, call our office at (402) 316-5460 for approval.

Follow these steps to bid in the sale.

1. Login into your account on DVAuction.com.
2. On the home page, scroll through Today's Events. Timed auctions are listed toward the bottom of today's events.
3. Click on the VIEW button next to the sale listing. This will take you to the lot listing.
4. To bid on a lot, click on that particular lot and it will take you to the individual lot where you can place a bid. If you see a pink bar with "You are not approved to bid at this event. Apply for Bidding," click on the blue APPLY FOR BIDDING button. Once approved, this is where you will submit your bid.

Contact DVAuction at (402) 316-5460 or support@dvauction.com.

DELIVERY POLICY

We have outlined our delivery arrangements and pricing below and we encourage each of you to review the details. Please stop by our check out counter prior to leaving the sale to coordinate delivery plans on your animals. If you are not onsite on sale day, Craig will be in touch with you within a week of the sale to coordinate the delivery of your purchases. We appreciate your patience and assistance when organizing delivery.

DELIVERY PRICING

Delivery will be charged to **CENTRAL POINTS** per head based on the pricing outlined on the map below. Pricing will be charged based on your physical address. Delivery charges will be added to each invoice at check out, unless you plan to load out within 7 days of the sale.

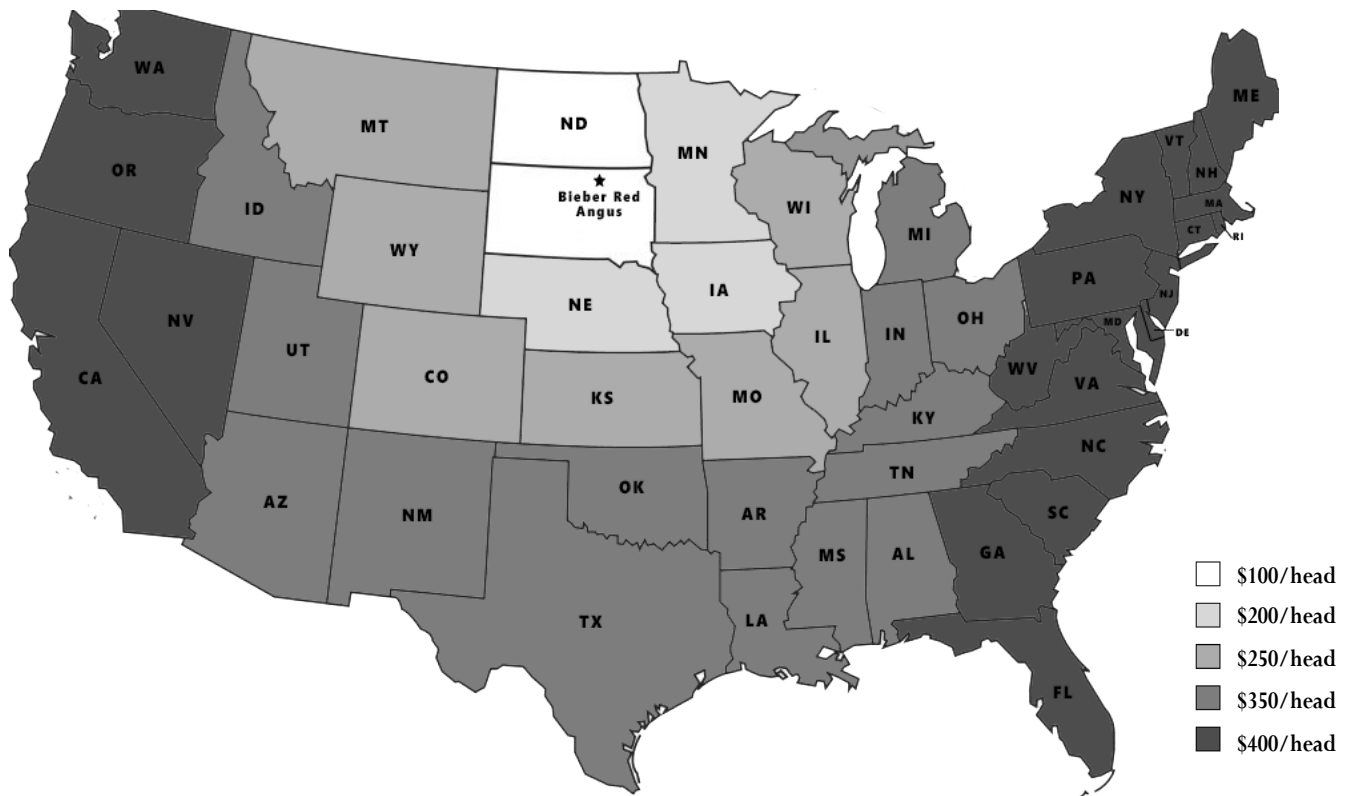
CENTRAL POINTS

All deliveries will be organized to **CENTRAL POINTS** within the state. Delivery will NOT be organized to your home or ranch. Loads are delivered by semi truck and require drop off points along their route with a loading chute and location to house livestock. You are expected to meet the semi truck driver at the central drop-off point as communicated by them. Central points for delivery include auction barns, vet clinics, and other locations determined by the semi truck driver at the time of delivery. Pricing to these central points will be charged to you based on your physical address. The driver will be given your contact information and will communicate with you regarding the drop off time and location.

FEEDING ARRANGEMENTS

If you are not ready to receive your animals when we plan to deliver to your area, feeding arrangements are available for a charge of \$3.50 per day per animal. Please coordinate these feeding arrangements after the sale.

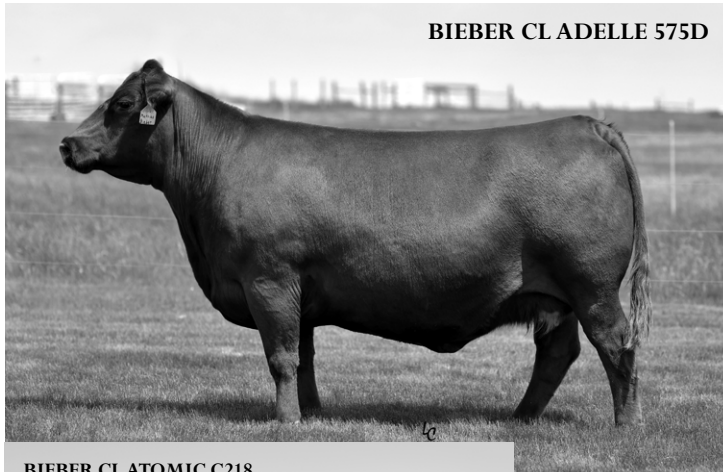
We ask for your cooperation in arranging dates and the pick up of your cattle at central delivery points within your state. This will keep the cattle from being on the semi truck longer than necessary and help to get your animals to you with the least possible stress and in the best possible condition. We appreciate your understanding of our delivery policy and look forward to working with you on the delivery of your cattle. Please let us know if you have any questions!



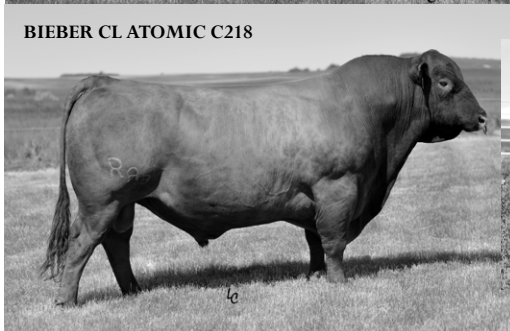
PREGNANT RECIPS

In early 2024 Bob Yackley told us they were selling their commercial cowherd as they were preparing to list the ranch. We talked throughout the spring and in late April we decided to have a look. We thought they would make outstanding recipients. In early May we agreed to terms and Bob's crew helped us put CIDRs in. Any of the recipis that didn't take during the first two rounds were implanted for a late August due date and are offered here.

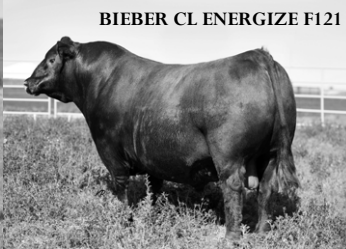
These lots will open at 7:00 am CDT on Wednesday, April 16 and close at 7:00 pm CDT on Wednesday, April 16. Please see the bidding procedures and auction format sections on the first page of the catalog for more information on how the sale will run.



BIEBER CL ADELLE 575D



BIEBER CL ATOMIC C218



BIEBER CL ENERGIZE F121

1

PREGNANT RECIPIENT 119

ANDRAS FUSION R236

BIEBER CL ATOMIC C218 REG 3474996

BIEBER DATELINE 308Y

BIEBER HARD DRIVE Y120

BIEBER CL ADELLE 575D REG 3537440

BIEBER ADELLE 297Y

	CED	BW	WW	YW	MILK	ME	HPG	CEM	STAY	MARB	REA	FAT
EPD	16	-3.5	70	117	26	2	13	10	15	0.50	0.08	0.05
ProS	131	HERDBUILDER			64	GRIDMASTER			67			

Lot 1

One pregnant recipient cow due 8/17/2025 with a heifer calf.

Sometimes you get opportunities that don't happen very often. This heifer calf mating is a full sib to the famous Bieber CL Energize F121. What an offer! Energize has been the one of the most used sires in the Red Angus breed in the last 2 years and likely will be unseated by his leading son Bieber Jumpstart J137. This mating's EPD estimates look favorable. Bieber CL Adelle 575D is an outstanding matron, and this prospective female will be the next generation.

2

PREGNANT RECIPIENT 178

BIEBER CL STOCKMARKET E119

BIEBER BLUE CHIP H302 REG 4303789

BIEBER ROSE 162C

GMRA TRINITY 5222

BIEBER GALLEE 390G REG 4140526

BIEBER GALLEE 550D

	CED	BW	WW	YW	MILK	ME	HPG	CEM	STAY	MARB	REA	FAT
EPD	17	-3.4	85	140	27	16	16	11	19	0.82	0.42	0.06
ProS	169	HERDBUILDER			90	GRIDMASTER			79			

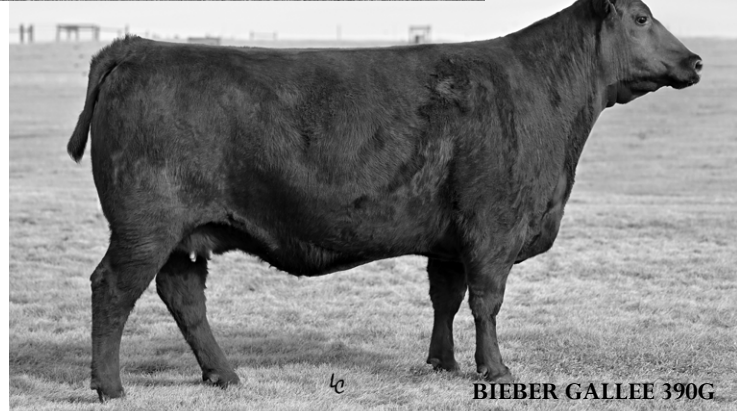
Lot 2

One pregnant recipient cow due 8/19/2025 with a bull calf.

Another outstanding opportunity to spice up your calf crop. This bull calf mating is out of Bieber Galle 390G - the dam to Bieber Jumpstart J137 whose progeny have taken the breed by storm. The EPD estimates on this mating start higher than 75% of the cattle offered this year. We did have a full brother to this mating as lot 48 in our March production sale. Bieber Galle is a powerful cow.



BIEBER BLUE CHIP H302



BIEBER GALLEE 390G

PREGNANT RECIPS

Lot 3

One pregnant recipient cow due 8/19/2025 with a heifer calf.

This pregnancy is sired by the great Complete 7000E and that's not even the best part. The dam is Bieber CL Adelle 475C who produced Bieber CL Stockmarket E119 and is in the Pieper and Buffalo Creek ET program. This pregnancy will be one of the best offers in the breed this year. She is one of the great matrons of the breed and the resulting heifer from this pregnancy is likely to be one who out produces her.

3 PREGNANT RECIPIENT 195

LEACHMAN PLEDGE A282Z

KJL/CLZB COMPLETE 7000E REG 3796236

HXC 507C

ANDRAS FUSION R236

BIEBER CL ADELLE 475C REG 3474411

BIEBER ADELLE 297Y

	CED	BW	WW	YW	MILK	ME	HPG	CEM	STAY	MARB	REA	FAT
EPD	13	-3.2	70	119	25	8	12	6	16	1.11	0.04	0.03
ProS	143	HERDBUILDER		54	GRIDMASTER		89					



KJL/CLZB COMPLETE 7000E



BIEBER CL ENERGIZE F121

Lots 4 - 6

See footnote on each lot for due date and calf sex.

These pregnancies will become some of the most valuable to sell this year. Bieber CL Adelle 475C is one of those matrons that will just keep cranking out the great ones. These are sired by Energize and his daughters are some of our best. Lot 4 is a bull that could likely be one that sires many of the breed's next greats. Lots 5 and 6 are likely to be donors in most any program. It's hard to sell great genetics like this but our desire to offer you the best is unmatched. These high quality recipis with breed leading embryos are not something you find every day.

6 Bieber Fever Online Female Sale



BIEBER CL ADELLE 475C

4 PREGNANT RECIPIENT 817

BIEBER CL ATOMIC C218

BIEBER CL ENERGIZE F121 REG 3958815

BIEBER CL ADELLE 575D

ANDRAS FUSION R236

BIEBER CL ADELLE 475C REG 3474411

BIEBER ADELLE 297Y

	CED	BW	WW	YW	MILK	ME	HPG	CEM	STAY	MARB	REA	FAT
EPD	15	-4.4	63	107	26	4	15	9	16	0.84	0.01	0.05
ProS	149	HERDBUILDER		71	GRIDMASTER		78					

One pregnant recipient cow due 8/17/2025 with a bull calf.

5 PREGNANT RECIPIENT 174

BIEBER CL ATOMIC C218

BIEBER CL ENERGIZE F121 REG 3958815

BIEBER CL ADELLE 575D

ANDRAS FUSION R236

BIEBER CL ADELLE 475C REG 3474411

BIEBER ADELLE 297Y

	CED	BW	WW	YW	MILK	ME	HPG	CEM	STAY	MARB	REA	FAT
EPD	15	-4.4	63	107	26	4	15	9	16	0.84	0.01	0.05
ProS	149	HERDBUILDER		71	GRIDMASTER		78					

One pregnant recipient cow due 8/19/2025 with a heifer calf.

6 PREGNANT RECIPIENT 805

BIEBER CL ATOMIC C218

BIEBER CL ENERGIZE F121 REG 3958815

BIEBER CL ADELLE 575D

ANDRAS FUSION R236

BIEBER CL ADELLE 475C REG 3474411

BIEBER ADELLE 297Y

	CED	BW	WW	YW	MILK	ME	HPG	CEM	STAY	MARB	REA	FAT
EPD	15	-4.4	63	107	26	4	15	9	16	0.84	0.01	0.05
ProS	149	HERDBUILDER		71	GRIDMASTER		78					

One pregnant recipient cow due 8/19/2025 with a heifer calf.

PREGNANT RECIPS



Lots 8 - 9

See footnote on each lot for due date and calf sex.

These lots are 3/4 siblings to Bieber Adelle 475C, the dam of Stockmarket. This mating tries to recreate one of the very best cows to walk on this ranch. We expect that these females may outpace 475C as the Atomic daughters are some of our very best.

8 PREGNANT RECIPIENT 911

ANDRAS FUSION R236
BIEBER CL ATOMIC C218 REG 3474996
 BIEBER DATELINE 308Y
 HUST CHIEF SEQUOYA R336
BIEBER ADELLE 297Y REG 1437046
 BIEBER ADELLE 7226

	CED	BW	WW	YW	MILK	ME	HPG	CEM	STAY	MARB	REA	FAT
EPD	14	-3.2	69	111	28	4	11	9	17	0.56	-0.17	0.06
ProS	125		HERDBUILDER	68			GRIDMASTER	57				

One pregnant recipient cow due 8/19/2025 with a heifer calf.

Lot 10

One pregnant recipient cow due 8/19/2025 with a heifer calf.

Lot 10 has a lot of potential. This female has the backing of a great cowline and a sire that produces outstanding females. Jumpstart daughters look very good with a few calving in 2025 and a bunch getting bred in 2025. We know the power of Adelle 297Y is prepotent and stacked on Jumpstart this will just be amazing.

10 PREGNANT RECIPIENT 141

BIEBER CL ENERGIZE F121
BIEBER JUMPSTART J137 REG 4463653
 BIEBER GALLEE 390G
 HUST CHIEF SEQUOYA R336
BIEBER ADELLE 297Y REG 1437046
 BIEBER ADELLE 7226

	CED	BW	WW	YW	MILK	ME	HPG	CEM	STAY	MARB	REA	FAT
EPD	14	-2.8	81	131	28	14	17	8	17	0.53	0.15	0.06
ProS	134		HERDBUILDER	77			GRIDMASTER	57				

Lot 7

One pregnant recipient cow due 8/17/2025 with a bull calf.

We chose High Density as a leading Hard Drive son and mated him to Bieber CL Adelle 475C the mother of Stockmarket, combining two of the most powerful pedigrees we have in our herd. This mating may just be the one that cracks the whip the hardest and ends up at the top of the breed.

7 PREGNANT RECIPIENT 140

BIEBER HARD DRIVE Y120
BIEBER HIGH DENSITY H558 REG 4308197
 BIEBER ENCHANTRESS 359B
 ANDRAS FUSION R236
BIEBER CL ADELLE 475C REG 3474411
 BIEBER ADELLE 297Y

	CED	BW	WW	YW	MILK	ME	HPG	CEM	STAY	MARB	REA	FAT
EPD	11	-0.9	77	122	26	8	12	7	17	0.95	0.43	0.03
ProS	139		HERDBUILDER	62			GRIDMASTER	77				

9 PREGNANT RECIPIENT 179

ANDRAS FUSION R236
BIEBER CL ATOMIC C218 REG 3474996
 BIEBER DATELINE 308Y
 HUST CHIEF SEQUOYA R336
BIEBER ADELLE 297Y REG 1437046
 BIEBER ADELLE 7226

	CED	BW	WW	YW	MILK	ME	HPG	CEM	STAY	MARB	REA	FAT
EPD	14	-3.2	69	111	28	4	11	9	17	0.56	-0.17	0.06
ProS	125		HERDBUILDER	68			GRIDMASTER	57				

One pregnant recipient cow due 8/19/2025 with a heifer calf.

SON OF BIEBER ADELLE 297Y



BIEBER JUMPSTART J137



PREGNANT RECIPS

Lot 11

One pregnant recipient cow due 8/19/2025 with a heifer calf.

Last spring the Flashdrive daughters stood out and we anticipate that one out of Adelle 297Y will be no exception. This pedigree has all the growth and maternal one could ask for

11

PREGNANT RECIPIENT 927

BIEBER HARD DRIVE E640
BIEBER FLASHDRIVE G266 REG 4140008
 BIEBER FLOWER 312E
 HUST CHIEF SEQUOYA R336
BIEBER ADELLE 297Y REG 1437046
 BIEBER ADELLE 7226

	CED	BW	WW	YW	MILK	ME	HPG	CEM	STAY	MARB	REA	FAT
EPD	9	0.2	82	128	27	15	14	6	18	0.81	0.23	0.03
ProS	142	HERDBUILDER 66		GRIDMASTER 76								



Lot 14

One pregnant recipient cow due 8/19/2025 with a bull calf.

This mating needs a little introduction. First off Bieber Primrose 139H is the dam of Bieber Paycheck K102 and the daughter of last fall's high selling cow Primrose 204E. Dynasty H524 is a Franchise son we produced out of a Rose daughter whose dam at one point was the highest marbling cow in the Red Angus breed. We look to the future for a lot of matings and this one sure stacks some greats.

Lots 12 - 13

See footnote on each lot for due date and calf sex.

Adelle 297Y has a storied production record of her own before her daughter Adelle 475C with 57 calves to her credit. She's produced many good sons that have gone to commercial herds, not to mention many daughters that are working in herds across the breed. This time we have stacked a leading Hard Drive son. Hard drive females are legendary for their type and production. A similar mating to this one produced the CLAdelle 575D who is the mother of Energize, one of the two most used bulls in the breed in 2022 and 2023.

12

PREGNANT RECIPIENT 065

BIEBER HARD DRIVE Y120
BIEBER HIGH DENSITY H558 REG 4308197
 BIEBER ENCHANTRESS 359B
 HUST CHIEF SEQUOYA R336
BIEBER ADELLE 297Y REG 1437046
 BIEBER ADELLE 7226

	CED	BW	WW	YW	MILK	ME	HPG	CEM	STAY	MARB	REA	FAT
EPD	10	-0.4	78	119	26	7	12	6	18	0.70	0.35	0.04
ProS	132	HERDBUILDER 71		GRIDMASTER 61								

One pregnant recipient cow due 8/16/2025 with a heifer calf.

13

PREGNANT RECIPIENT 843

BIEBER HARD DRIVE Y120
BIEBER HIGH DENSITY H558 REG 4308197
 BIEBER ENCHANTRESS 359B
 HUST CHIEF SEQUOYA R336
BIEBER ADELLE 297Y REG 1437046
 BIEBER ADELLE 7226

	CED	BW	WW	YW	MILK	ME	HPG	CEM	STAY	MARB	REA	FAT
EPD	10	-0.4	78	119	26	7	12	6	18	0.70	0.35	0.04
ProS	132	HERDBUILDER 71		GRIDMASTER 61								

One pregnant recipient cow due 8/19/2025 with a heifer calf.

14

PREGNANT RECIPIENT 014

9 MILE FRANCHISE 6305
BIEBER DYNASTY H524 REG 4308117
 BIEBER ROSE 520F
 BIEBER CL STOCKMARKET E119
BIEBER PRIMROSE 139H REG 4303199
 BIEBER PRIMROSE 204E

	CED	BW	WW	YW	MILK	ME	HPG	CEM	STAY	MARB	REA	FAT
EPD	20	-6.2	75	128	31	15	14	13	16	1.05	0.28	0.06
ProS	158	HERDBUILDER 71		GRIDMASTER 86								

PREGNANT RECIPS



BIEBER PRIMROSE 552H



BIEBER JUMPSTART J137

Lots 15 - 20

See footnote on each lot for due date and calf sex.

We decided to flush Primrose 552H, a virgin heifer, as one of the best Stockmarket daughters in the herd. Her dam put sons in many of our best customer's herds like Price Ranch of CO, Hansmeier and Sons of SD, Wade & Suzie Tucker of SD, Pennypoke Ranch of NE, Pearl Creek Ranch of SD, and females in Middle Creek Red Angus of TX. The Primrose cowline generally flushes well and the 1 heifer pregnancy could be the breed leading donor. The sons could be the next great herd sire.

15 PREGNANT RECIPIENT 005

BIEBER CL ENERGIZE F121
BIEBER JUMPSTART J137 REG 4463653
 BIEBER GALLEE 390G
 BIEBER CL STOCKMARKET E119
BIEBER PRIMROSE 552H REG 4308221
 BIEBER PRIMROSE 474B

	CED	BW	WW	YW	MILK	ME	HPG	CEM	STAY	MARB	REA	FAT
EPD	15	-2.8	93	152	31	19	18	10	17	0.68	0.39	0.05
ProS	148	HERDBUILDER		81	GRIDMASTER		67					

One pregnant recipient cow due 8/17/2025 with a bull calf.

16 PREGNANT RECIPIENT 056

BIEBER CL ENERGIZE F121
BIEBER JUMPSTART J137 REG 4463653
 BIEBER GALLEE 390G
 BIEBER CL STOCKMARKET E119
BIEBER PRIMROSE 552H REG 4308221
 BIEBER PRIMROSE 474B

	CED	BW	WW	YW	MILK	ME	HPG	CEM	STAY	MARB	REA	FAT
EPD	15	-2.8	93	152	31	19	18	10	17	0.68	0.39	0.05
ProS	148	HERDBUILDER		81	GRIDMASTER		67					

One pregnant recipient cow due 8/17/2025 with a bull calf.

17 PREGNANT RECIPIENT 813

BIEBER CL ENERGIZE F121
BIEBER JUMPSTART J137 REG 4463653
 BIEBER GALLEE 390G
 BIEBER CL STOCKMARKET E119
BIEBER PRIMROSE 552H REG 4308221
 BIEBER PRIMROSE 474B

	CED	BW	WW	YW	MILK	ME	HPG	CEM	STAY	MARB	REA	FAT
EPD	15	-2.8	93	152	31	19	18	10	17	0.68	0.39	0.05
ProS	148	HERDBUILDER		81	GRIDMASTER		67					

One pregnant recipient cow due 8/17/2025 with a bull calf.

18 PREGNANT RECIPIENT 601

BIEBER CL ENERGIZE F121
BIEBER JUMPSTART J137 REG 4463653
 BIEBER GALLEE 390G
 BIEBER CL STOCKMARKET E119
BIEBER PRIMROSE 552H REG 4308221
 BIEBER PRIMROSE 474B

	CED	BW	WW	YW	MILK	ME	HPG	CEM	STAY	MARB	REA	FAT
EPD	15	-2.8	93	152	31	19	18	10	17	0.68	0.39	0.05
ProS	148	HERDBUILDER		81	GRIDMASTER		67					

One pregnant recipient cow due 8/19/2025 with a bull calf.

19 PREGNANT RECIPIENT 683

BIEBER CL ENERGIZE F121
BIEBER JUMPSTART J137 REG 4463653
 BIEBER GALLEE 390G
 BIEBER CL STOCKMARKET E119
BIEBER PRIMROSE 552H REG 4308221
 BIEBER PRIMROSE 474B

	CED	BW	WW	YW	MILK	ME	HPG	CEM	STAY	MARB	REA	FAT
EPD	15	-2.8	93	152	31	19	18	10	17	0.68	0.39	0.05
ProS	148	HERDBUILDER		81	GRIDMASTER		67					

One pregnant recipient cow due 8/19/2025 with a heifer calf.

20 PREGNANT RECIPIENT 856

BIEBER CL ENERGIZE F121
BIEBER JUMPSTART J137 REG 4463653
 BIEBER GALLEE 390G
 BIEBER CL STOCKMARKET E119
BIEBER PRIMROSE 552H REG 4308221
 BIEBER PRIMROSE 474B

	CED	BW	WW	YW	MILK	ME	HPG	CEM	STAY	MARB	REA	FAT
EPD	15	-2.8	93	152	31	19	18	10	17	0.68	0.39	0.05
ProS	148	HERDBUILDER		81	GRIDMASTER		67					

One pregnant recipient cow due 8/19/2025 with a bull calf.

FALL BRED COWS

These females will give you a great opportunity to start or build your herd with leading genetics, and they include embryo transplant daughters out of some of our best donors. Check the footnotes for breeding data on each lot including due date, calf sire, and calf sex.

These females are rebred from our cowherd. The bred heifers are from our replacement heifer group that were exposed for two 35 day breeding seasons prior to being bred for a fall calving season. The bred cows fell out from our May/June calving cows which are bred for 42 days in August-September. We eliminate any cows with any issues before we breed and then sync them for AI and a short breeding season. We feel these cows are a great option to start a fall herd.

These lots will open at 7:00 am CDT on Wednesday, April 16 and close at 7:00 pm CDT on Wednesday, April 16. Please see the bidding procedures and auction format sections on the first page of the catalog for more information on how the sale will run.

21

BIEBER TILLY 521L

BORN: 3/10/2023 REG: 4806314 100% AR 1A

BIEBER CL ATOMIC C218

BIEBER CL ENERGIZE F121

BIEBER CL ADELLE 575D

BIEBER CL STOCKMAN E116

BIEBER TILLY 571H

Cow ID: 521L BIEBER TILLY 149D EPD Data Generated 3/14/2025

	CED	BW	WW	YW	MILK	ME	HPG	CEM	STAY	MARB	REA	FAT
EPD	17	-5.4	68	112	23	6	14	11	15	0.54	0.16	0.05
Rank	7%	4%	39%	32%	74%	66%	15%	3%	43%	26%	42%	96%
ProS	143		HERDBUILDER	69		GRIDMASTER	74					
RANK	7%		RANK	20%		RANK	11%					



Bull calf due 8/30/2025 sired by BIEBER BLUE CHIP H302. This heifer is the result of our ET program.

23

BIEBER SUSIE 367L

BORN: 4/25/2023 REG: 4847276 100% AR 1A

BIEBER CL STOCKMARKET E119

BIEBER BLUE CHIP H302

BIEBER ROSE 162C

BIEBER HARD DRIVE E640

BIEBER SUSIE 312J

Cow ID: 367L BIEBER SUSIE 571F EPD Data Generated 3/14/2025

	CED	BW	WW	YW	MILK	ME	HPG	CEM	STAY	MARB	REA	FAT
EPD	19	-3.9	67	108	27	5	14	11	17	0.97	0.43	0.05
Rank	1%	15%	46%	42%	33%	59%	16%	2%	24%	1%	6%	94%
ProS	157		HERDBUILDER	77		GRIDMASTER	80					
RANK	2%		RANK	10%		RANK	7%					



Heifer calf due 9/30/2025 sired by either BIEBER HIGH DENSITY L316, LSF SRR DIVERSIFIED 1143J, or ANDRAS DISTINCT K052. DNA testing will be necessary to determine sire.

22

BIEBER CL ADELLE 208L

BORN: 2/13/2023 REG: 4788930 100% AR 1A

RED MRLA RESOURCE 137E

PIE ASSET 1276

PIE RUBY 520

BIEBER CL STOCKMAN E116

BIEBER CL ADELLE 266H

Cow ID: 208L BIEBER CL ADELLE 475C EPD Data Generated 3/14/2025

	CED	BW	WW	YW	MILK	ME	HPG	CEM	STAY	MARB	REA	FAT
EPD	14	-0.9	81	152	30	19	11	9	16	0.53	0.34	0.03
Rank	37%	66%	7%	1%	13%	99%	55%	16%	33%	28%	17%	79%
ProS	146		HERDBUILDER	52		GRIDMASTER	95					
RANK	5%		RANK	53%		RANK	2%					



Unsexed calf due 10/4/2025 sired by either BIEBER HIGH DENSITY L316, LSF SRR DIVERSIFIED 1143J, or ANDRAS DISTINCT K052. DNA testing will be necessary to determine sire. This lot is out of a 3/4 sibling to Stockmarket and has the great Adelle 475C in her pedigree.

24

BIEBER JK TORYANNA 380L

BORN: 5/3/2023 REG: 4847082 100% AR 1A

BIEBER CL ENERGIZE F121

BIEBER JUMPSTART J137

BIEBER GALLEE 390G

BIEBER FOREFRONT B281

BIEBER TORYANNA 111F

Cow ID: 380L BIEBER TORYANNA 288D EPD Data Generated 3/14/2025

	CED	BW	WW	YW	MILK	ME	HPG	CEM	STAY	MARB	REA	FAT
EPD	15	-3.5	78	136	28	14	13	11	11	0.48	0.53	0.03
Rank	18%	20%	11%	5%	30%	94%	25%	3%	87%	36%	3%	73%
ProS	111		HERDBUILDER	38		GRIDMASTER	73					
RANK	39%		RANK	78%		RANK	12%					



Heifer calf due 10/4/2025 sired by either BIEBER HIGH DENSITY L316, LSF SRR DIVERSIFIED 1143J, or ANDRAS DISTINCT K052. DNA testing will be necessary to determine sire. Line bred Fusion R236. A great maternal base.

FALL BRED COWS

25

BIEBER SUSIE 110L

BORN: 1/15/2023 REG: 4789094 100% AR II

9 MILE FRANCHISE 6305

BIEBER DYNASTY H524

BIEBER ROSE 520F

BIEBER CL STOCKMAN E116

BIEBER SUSIE 177J

Cow ID: 110L BIEBER SUSIE 557F EPD Data Generated 3/14/2025

	CED	BW	WW	YW	MILK	ME	HPG	CEM	STAY	MARB	REA	FAT
EPD	18	-5.6	71	119	31	6	12	12	18	0.73	0.08	0.06
Rank	4%	3%	28%	21%	8%	64%	50%	1%	15%	8%	59%	98%
PROS	155		HERDBUILDER	82		GRIDMASTER	73					
RANK	3%		RANK	7%		RANK	12%					



This cow is black. Bull calf due 9/27/2025 sired by either BIEBER HIGH DENSITY L316, LSF SRR DIVERSIFIED 1143J, or ANDRAS DISTINCT K052. DNA testing will be necessary to determine sire.

27

BIEBER LASS 385L

BORN: 5/6/2023 REG: 4847330 100% AR 1A

WFL FRANKLY F8276

LARR PAYCHECK 0728

LARR MISS CC FLOWER 7528

BIEBER CL STOCKMARKET E119

BIEBER LASS 101H

Cow ID: 385L BIEBER LASS 293F EPD Data Generated 3/14/2025

	CED	BW	WW	YW	MILK	ME	HPG	CEM	STAY	MARB	REA	FAT
EPD	11	-1.7	98	159	26	20	18	8	12	0.61	0.37	0.05
Rank	73%	52%	1%	1%	42%	99%	1%	35%	85%	18%	12%	92%
PROS	114		HERDBUILDER	42		GRIDMASTER	71					
RANK	35%		RANK	71%		RANK	14%					



Unsexed calf due 8/18/2025 sired by BIEBER JUMPSTART J137. Power packed pedigree with Stockmarket, Paycheck, and a jumpstart calf coming.

28

BIEBER ADELLE 523L

BORN: 3/12/2023 REG: 4806318 100% AR 1A

PIE STOCKMAN 4051

BIEBER CL STOCKMARKET E119

BIEBER CLADELLE 475C

BIEBER FOREFRONT B281

BIEBER ADELLE 189H

Cow ID: 523L BIEBER ADELLE 535E EPD Data Generated 3/14/2025

	CED	BW	WW	YW	MILK	ME	HPG	CEM	STAY	MARB	REA	FAT
EPD	18	-4.2	81	142	24	9	12	13	17	1.08	0.12	0.06
Rank	3%	12%	7%	3%	63%	81%	34%	1%	22%	1%	50%	99%
PROS	162		HERDBUILDER	80		GRIDMASTER	82					
RANK	2%		RANK	8%		RANK	5%					



Unsexed calf due 8/30/2025 sired by BIEBER CHECKMATE K126.

26

BIEBER SAM 150L

BORN: 1/21/2023 REG: 4789216 100% AR 1A

9 MILE FRANCHISE 6305

BIEBER DYNASTY H524

BIEBER ROSE 520F

BIEBER SPARTAN E639

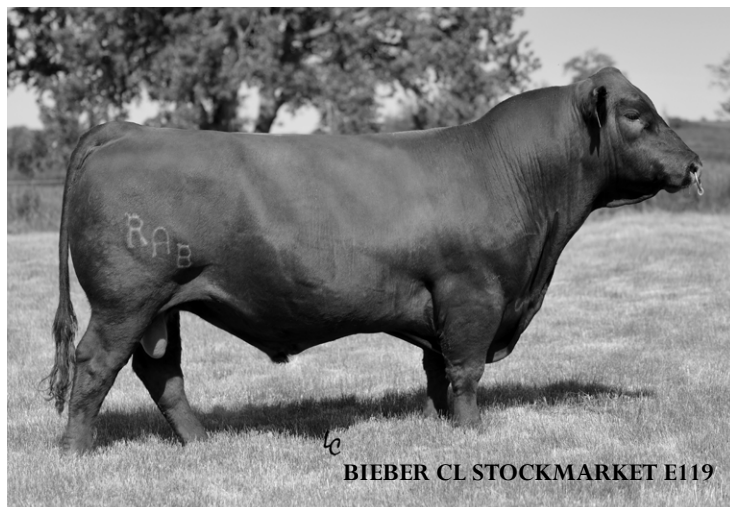
BIEBER SAM 125J

Cow ID: 150L BIEBER SAM 202G EPD Data Generated 3/14/2025

	CED	BW	WW	YW	MILK	ME	HPG	CEM	STAY	MARB	REA	FAT
EPD	13	-3.6	72	111	32	11	13	9	15	0.96	0.21	0.02
Rank	51%	18%	24%	34%	6%	88%	22%	16%	45%	1%	33%	56%
PROS	134		HERDBUILDER	59		GRIDMASTER	75					
RANK	12%		RANK	39%		RANK	10%					



Heifer calf due 9/21/2025 sired by either BIEBER HIGH DENSITY L316, LSF SRR DIVERSIFIED 1143J, or ANDRAS DISTINCT K052. DNA testing will be necessary to determine sire.



BIEBER CL STOCKMARKET E119

29

BIEBER CL ADELLE 539L

BORN: 3/19/2023 REG: 4806270 100% AR 1A

BIEBER CL ATOMIC C218

BIEBER CL ENERGIZE F121

BIEBER CLADELLE 575D

ANDRAS FUSION R236

BIEBER CL ADELLE 475C

Cow ID: 539L BIEBER ADELLE 297Y EPD Data Generated 3/14/2025

	CED	BW	WW	YW	MILK	ME	HPG	CEM	STAY	MARB	REA	FAT
EPD	15	-4.9	56	95	26	3	16	9	16	0.76	-0.03	0.04
Rank	26%	7%	84%	70%	44%	43%	4%	15%	31%	7%	80%	88%
PROS	144		HERDBUILDER	75		GRIDMASTER	69					
RANK	6%		RANK	12%		RANK	16%					



Heifer calf due 9/15/2025 sired by either BIEBER HIGH DENSITY L316, LSF SRR DIVERSIFIED 1143J, or ANDRAS DISTINCT K052. DNA testing will be necessary to determine sire. Lot 29 is a maternal sister to Stockmarket E119 out of the great Adelle 475C.

FALL BRED COWS

30 BIEBER GALLEE 452L

BORN: 5/24/2023 REG: 4847552 100% AR 1A

RED MRLA RESOURCE 137E

PIE ASSET 1276

PIE RUBY 520

BIEBER CL STOCKMARKET E119

BIEBER GALLEE 268H

Cow ID: 452L BIEBER GALLEE 558D EPD Data Generated 3/14/2025

	CED	BW	WW	YW	MILK	ME	HPG	CEM	STAY	MARB	REA	FAT
EPD	9	-0.4	77	130	25	14	13	7	15	0.68	0.21	0.02
Rank	93%	77%	13%	9%	53%	95%	27%	47%	47%	11%	33%	56%
ProS	133		HERDBUILDER	49		GRIDMASTER	84					
RANK	13%		RANK	59%		RANK	5%					



Unsexed calf due 8/26/2025 sired by BIEBER CHECKMATE K126.

32 BIEBER BIRD 298L

BORN: 2/25/2023 REG: 4789768 100% AR 1A

RED MRLA RESOURCE 137E

PIE ASSET 1276

PIE RUBY 520

STRA FORERUNNER 838

BIEBER BIRD 339H

Cow ID: 298L BIEBER BIRD 311E EPD Data Generated 3/14/2025

	CED	BW	WW	YW	MILK	ME	HPG	CEM	STAY	MARB	REA	FAT
EPD	4	4.1	82	144	30	23	12	4	13	0.23	0.27	0.00
Rank	99%	99%	6%	2%	13%	99%	48%	96%	74%	91%	24%	19%
ProS	82		HERDBUILDER	10		GRIDMASTER	72					
RANK	80%		RANK	99%		RANK	13%					



Unsexed calf due 8/26/2025 sired by BIEBER BLUE CHIP H302.

34 BIEBER PRIMROSE 249L

BORN: 2/18/2023 REG: 4789608 100% AR 1A

RED MRLA RESOURCE 137E

PIE ASSET 1276

PIE RUBY 520

BIEBER SPARTACUS A193

BIEBER PRIMROSE 218E

Cow ID: 249L BIEBER PRIMROSE 495B EPD Data Generated 3/14/2025

	CED	BW	WW	YW	MILK	ME	HPG	CEM	STAY	MARB	REA	FAT
EPD	15	-0.5	70	120	31	13	11	9	16	0.35	0.05	0.04
Rank	22%	75%	31%	19%	10%	93%	57%	11%	32%	72%	65%	90%
ProS	110		HERDBUILDER	56		GRIDMASTER	53					
RANK	41%		RANK	44%		RANK	41%					



Bull calf due 9/1/2025 sired by BIEBER JUMPSTART J137.

31 BIEBER TORYANNA 290L

BORN: 2/23/2023 REG: 4789740 100% AR 1A

BIEBER HARD DRIVEY120

BIEBER HIGH DENSITY H558

BIEBER ENCHANTRESS 359B

BIEBER ROLLIN DEEPY118

BIEBER TORYANNA 310D

Cow ID: 290L BIEBER TORYANNA 313W EPD Data Generated 3/14/2025

	CED	BW	WW	YW	MILK	ME	HPG	CEM	STAY	MARB	REA	FAT
EPD	10	-0.9	69	104	28	7	12	7	15	0.34	0.55	0.00
Rank	86%	66%	37%	49%	29%	68%	48%	54%	43%	74%	2%	26%
ProS	88		HERDBUILDER	54		GRIDMASTER	34					
RANK	74%		RANK	49%		RANK	83%					



Unsexed calf due 8/30/2025 sired by BIEBER BLUE CHIP H302.

33 BIEBER ENCHANTRESS 176L

BORN: 2/8/2023 REG: 4789318 100% AR 1A

9 MILE FRANCHISE 6305

BIEBER DYNASTY H524

BIEBER ROSE 520F

BIEBER MAXIMUS E294

BIEBER ENCHANTRESS 198J

Cow ID: 176L BIEBER ENCHANTRESS 352F EPD Data Generated 3/14/2025

	CED	BW	WW	YW	MILK	ME	HPG	CEM	STAY	MARB	REA	FAT
EPD	13	-1.7	81	136	32	15	11	10	15	0.75	0.57	0.05
Rank	51%	52%	7%	5%	5%	96%	53%	6%	47%	7%	2%	95%
ProS	133		HERDBUILDER	55		GRIDMASTER	78					
RANK	13%		RANK	47%		RANK	8%					



Heifer calf due 8/30/2025 sired by BIEBER JUMPSTART J137.

35 BIEBER ENCHANTRESS 226L

BORN: 2/14/2023 REG: 4789512 100% AR 1A

LSF NIGHT CALVER 9921W

LSF SRR IDENTITY 0295H

LSF SRR CRYSTAL C5016 F8314

BIEBER LET'S ROLL B563

BIEBER ENCHANTRESS 320H

Cow ID: 226L BIEBER ENCHANTRESS 515C EPD Data Generated 3/14/2025

	CED	BW	WW	YW	MILK	ME	HPG	CEM	STAY	MARB	REA	FAT
EPD	15	-2.6	93	155	29	14	16	9	12	0.70	0.37	0.05
Rank	23%	35%	1%	1%	18%	94%	2%	15%	79%	10%	12%	97%
ProS	133		HERDBUILDER	54		GRIDMASTER	79					
RANK	13%		RANK	49%		RANK	7%					



Bull calf due 9/21/2025 sired by either BIEBER HIGH DENSITY L316, LSF SRR DIVERSIFIED 1143J, or ANDRAS DISTINCT K052. DNA testing will be necessary to determine sire.

FALL BRED COWS

36 BIEBER PRIMROSE 200L

BORN: 2/11/2023 REG: 4789400 100% AR 1A

LSF NIGHT CALVER 9921W
LSF SRR IDENTITY 0295H
LSF SRR CRYSTAL C5016 F8314
BIEBER MAXIMUS E294

BIEBER PRIMROSE 254H

Cow ID: 200L BIEBER PRIMROSE 304C EPD Data Generated 3/14/2025

	CED	BW	WW	YW	MILK	ME	HPG	CEM	STAY	MARB	REA	FAT
EPD	12	-2.0	88	140	27	7	16	10	15	0.63	0.28	0.04
Rank	62%	46%	2%	3%	37%	66%	3%	9%	40%	16%	23%	91%
ProS	150		HERDBUILDER	82		GRIDMASTER	68					
RANK	4%		RANK	7%		RANK	17%					



Bull calf due 9/24/2025 sired by either BIEBER HIGH DENSITY L316, LSF SRR DIVERSIFIED 1143J, or ANDRAS DISTINCT K052. DNA testing will be necessary to determine sire.

38 BIEBER DATELINE 317L

BORN: 3/2/2023 REG: 4789834 100% AR 1A

BIEBER HARD DRIVEY120
BIEBER HIGH DENSITY H558
BIEBER ENCHANTRESS 359B
BIEBER LET'S ROLL B563

BIEBER DATELINE 433G

Cow ID: 317L BIEBER DATELINE 476Z EPD Data Generated 3/14/2025

	CED	BW	WW	YW	MILK	ME	HPG	CEM	STAY	MARB	REA	FAT
EPD	10	-0.9	76	118	28	8	12	7	21	0.74	0.75	0.03
Rank	82%	66%	14%	23%	24%	76%	49%	45%	1%	8%	1%	69%
ProS	151		HERDBUILDER	90		GRIDMASTER	60					
RANK	4%		RANK	3%		RANK	28%					



Unsexed calf due 9/1/2025 sired by BIEBER BLUE CHIP H302.

40 BIEBER CL ADELLE 514L

BORN: 3/2/2023 REG: 4810285 100% AR 1A

BIEBER CL STOCKMARKET E119
BIEBER FULLY STOCKED H179
BIEBER FLOWER 165E
ANDRAS FUSION R236

BIEBER CL ADELLE 475C

Cow ID: 514L BIEBER ADELLE 297Y EPD Data Generated 3/14/2025

	CED	BW	WW	YW	MILK	ME	HPG	CEM	STAY	MARB	REA	FAT
EPD	16	-6.1	59	100	21	22	15	10	13	1.09	0.00	0.06
Rank	15%	2%	75%	61%	89%	99%	9%	6%	74%	1%	75%	97%
ProS	112		HERDBUILDER	33		GRIDMASTER	80					
RANK	37%		RANK	85%		RANK	7%					



Unsexed calf due 9/1/2025 sired by BIEBER CHECKMATE K126. This is a 3/4 sister to Stockmarket E119.

37 BIEBER LAURA 191L

BORN: 2/10/2023 REG: 4789368 100% AR 1A

RED MRLA RESOURCE 137E
PIE ASSET 1276
PIE RUBY 520
WFL PROFITMAKER E7030

BIEBER LAURA 167H

Cow ID: 191L BIEBER LAURA 524F EPD Data Generated 3/14/2025

	CED	BW	WW	YW	MILK	ME	HPG	CEM	STAY	MARB	REA	FAT
EPD	17	-2.5	78	134	30	23	12	10	11	0.36	0.03	0.02
Rank	8%	36%	11%	6%	14%	99%	50%	4%	88%	71%	69%	62%
ProS	82		HERDBUILDER	20		GRIDMASTER	62					
RANK	81%		RANK	96%		RANK	26%					



Unsexed calf due 10/8/2025 sired by either BIEBER HIGH DENSITY L316, LSF SRR DIVERSIFIED 1143J, or ANDRAS DISTINCT K052. DNA testing will be necessary to determine sire.

39 BIEBER ENCHANTRESS 509L

BORN: 2/28/2023 REG: 4810323 100% AR 1A

BIEBER HARD DRIVEY120
BIEBER DRIVEN C540
BIEBER JOAN 309Y
BIEBER ROLLIN DEEPY118

BIEBER ENCHANTRESS 359B

Cow ID: 509L BIEBER ENCHANTRESS 147W EPD Data Generated 3/14/2025

	CED	BW	WW	YW	MILK	ME	HPG	CEM	STAY	MARB	REA	FAT
EPD	13	-3.6	65	96	22	7	15	9	21	0.74	0.49	0.05
Rank	50%	18%	51%	68%	85%	67%	6%	10%	1%	8%	4%	95%
ProS	176		HERDBUILDER	105		GRIDMASTER	71					
RANK	1%		RANK	1%		RANK	14%					



Bull calf due 9/19/2025 sired by either BIEBER HIGH DENSITY L316, LSF SRR DIVERSIFIED 1143J, or ANDRAS DISTINCT K052. DNA testing will be necessary to determine sire. This is a 3/4 sister to Bieber High Density H558.

41 BIEBER ADELLE 284L

BORN: 2/23/2023 REG: 4789716 100% AR 1A

BIEBER HARD DRIVEY120
BIEBER HIGH DENSITY H558
BIEBER ENCHANTRESS 359B
BIEBER ROLLIN DEEPY118

BIEBER ADELLE 615E

Cow ID: 284L BIEBER ADELLE 311Y EPD Data Generated 3/14/2025

	CED	BW	WW	YW	MILK	ME	HPG	CEM	STAY	MARB	REA	FAT
EPD	9	3.1	91	140	26	16	12	7	16	0.56	0.65	0.05
Rank	91%	99%	1%	3%	42%	96%	45%	57%	33%	23%	1%	92%
ProS	112		HERDBUILDER	54		GRIDMASTER	57					
RANK	38%		RANK	48%		RANK	34%					



Bull calf due 9/1/2025 sired by BIEBER BLUE CHIP H302.

FALL BRED COWS

42

BIEBER ROSE 246L

BORN: 2/18/2023

REG: 4789596

100% AR 1A

BIEBER HARD DRIVEY120

BIEBER HIGH DENSITY H558

BIEBER ENCHANTRESS 359B

MLK CRK UNIFIED 4207

BIEBER ROSE 407G

Cow ID: 246L

BIEBER ROSE 632D

EPD Data Generated 3/14/2025

	CED	BW	WW	YW	MILK	ME	HPG	CEM	STAY	MARB	REA	FAT
EPD	8	-0.5	70	107	28	8	9	5	15	0.74	0.53	0.03
Rank	96%	75%	33%	44%	31%	73%	94%	81%	53%	8%	3%	70%
ProS	105		HERDBUILDER	36		GRIDMASTER	68					
RANK	49%		RANK	81%		RANK	17%					

Unsexed calf due 8/23/2025 sired by BIEBER CHECKMATE K126.

43

BIEBER DURHEIM 482L

BORN: 6/1/2023

REG: 4847652

96.8% AR 3.2% XX 1B

HXC 5545C

KJL/CLZB KIRKLAND 8003F

HXC 107Y

BIEBER LB MITIGATOR C314

BIEBER DURHEIM 330E

Cow ID: 482L

BD3P DURHEIM 91

EPD Data Generated 3/14/2025

	CED	BW	WW	YW	MILK	ME	HPG	CEM	STAY	MARB	REA	FAT
EPD	11	-1.6	62	100	30	12	16	6	16	0.30	-0.03	0.00
Rank	79%	54%	65%	61%	15%	90%	4%	75%	31%	82%	80%	26%
ProS	75		HERDBUILDER	56		GRIDMASTER	19					
RANK	88%		RANK	44%		RANK	97%					

Bull calf due 9/2/2025 sired by either BIEBER HIGH DENSITY L316, LSF SRR DIVERSIFIED 1143J, or ANDRAS DISTINCT K052. DNA testing will be necessary to determine sire.

44

BIEBER TORYANNA 573E

BORN: 4/27/2017

REG: 3763013

100% AR 1A

BUF CRK THE RIGHT KIND U199

LOOSLI RIGHT ON 423

SRR DORY-JIBA 0155-5036

LACY GOLD BAR 8123

BIEBER TORYANNA 211Y

Cow ID: 573E

BIEBER TORYANNA 162U

EPD Data Generated 3/14/2025

	CED	BW	WW	YW	MILK	ME	HPG	CEM	STAY	MARB	REA	FAT
EPD	10	-1.7	73	115	28	4	11	4	13	0.07	0.27	0.03
Rank	79%	48%	16%	21%	27%	53%	62%	90%	80%	99%	16%	83%
ProS	53		HERDBUILDER	26		GRIDMASTER	27					
RANK	96%		RANK	91%		RANK	84%					

Bull calf due 8/30/2025 sired by BIEBER JUMPSTART J137. This lot is the result of our ET program.

45

BIEBER LAURA 218F

BORN: 2/10/2018

REG: 3958555

100% AR 1A

MILWILLAH FEVOLA F37

MILWILLAH MARBLE BAR J53

MILWILLAH LOWAN G291

LSF CYCLONE 9934W

BIEBER LAURA 170C

Cow ID: 218F

BIEBER LAURA 414A

EPD Data Generated 3/14/2025

	CED	BW	WW	YW	MILK	ME	HPG	CEM	STAY	MARB	REA	FAT
EPD	13	-1.2	71	101	31	8	14	9	14	0.48	0.12	0.04
Rank	42%	58%	24%	49%	12%	76%	22%	14%	73%	32%	39%	87%
ProS	97		HERDBUILDER	50		GRIDMASTER	47					
RANK	56%		RANK	60%		RANK	46%					

Bull calf due 9/18/2025 sired by either BIEBER HIGH DENSITY L316, LSF SRR DIVERSIFIED 1143J, or ANDRAS DISTINCT K052. DNA testing will be necessary to determine sire.

46

BIEBER PRIMROSE 127J

BORN: 1/19/2021

REG: 4463641

100% AR 1A

BIEBER SPARTACUS A193

BIEBER SPARTAN E639

BIEBER RENEE 477A

BIEBER CLATOMIC C218

BIEBER PRIMROSE 118G

Cow ID: 127J

BIEBER PRIMROSE 400E

EPD Data Generated 3/14/2025

	CED	BW	WW	YW	MILK	ME	HPG	CEM	STAY	MARB	REA	FAT
EPD	10	1.2	82	128	33	11	14	8	13	0.37	0.35	0.03
Rank	79%	91%	4%	6%	6%	89%	21%	30%	82%	55%	9%	77%
ProS	103		HERDBUILDER	45		GRIDMASTER	58					
RANK	46%		RANK	68%		RANK	25%					

Bull calf due 9/1/2025 sired by BIEBER BLUE CHIP H302.

47

BIEBER PRIDE 110H

BORN: 1/7/2020

REG: 4303063

100% AR 1A

PIE STOCKMAN 4051

BIEBER CL STOCKMARKET E119

BIEBER CLADELLE 475C

BIEBER CLATOMIC C218

BIEBER PRIDE 127F

Cow ID: 110H

BIEBER PRIDE 153D

EPD Data Generated 3/14/2025

	CED	BW	WW	YW	MILK	ME	HPG	CEM	STAY	MARB	REA	FAT
EPD	12	-0.4	99	165	27	17	16	9	9	0.96	0.50	0.04
Rank	51%	72%	1%	1%	41%	97%	6%	10%	97%	1%	3%	89%
ProS	138		HERDBUILDER	33		GRIDMASTER	105					
RANK	9%		RANK	84%		RANK	1%					

Heifer calf due 10/2/2025 sired by either BIEBER HIGH DENSITY L316, LSF SRR DIVERSIFIED 1143J, or ANDRAS DISTINCT K052. DNA testing will be necessary to determine sire. Lot 47 was identified as one of the highest \$Profit Red Angus females in 2021.

FALL BRED COWS

48BIEBER ADELLE 122F

BORN: 1/8/2018REG: 3958735100% AR 1A

MILWILLAH FEVOLA F37
MILWILLAH MARBLE BAR J53
MILWILLAH LOWAN G291
BIEBER ROLLIN DEEPY118

BIEBER ADELLE 440D

Cow ID: 122F BIEBER ADELLE 449Z EPD Data Generated 3/14/2025

	CED	BW	WW	YW	MILK	ME	HPG	CEM	STAY	MARB	REA	FAT
EPD	13	-0.5	72	116	30	8	17	11	16	0.35	-0.10	0.05
Rank	37%	70%	19%	19%	19%	77%	3%	3%	44%	60%	82%	94%
	ProS	110	HERDBUILDER	70	GRIDMASTER	40						
	RANK	38%	RANK	26%	RANK	61%						



Heifer calf due 9/2/2025 sired by BIEBER CHECKMATE K126.

49BIEBER DURHEIM 168H

BORN: 2/7/2020REG: 430330585.9% AR 12.1% SM 2% XX III

BIEBER SPARTACUS A193
BIEBER MAXIMUS E294
BIEBER LINCOLN 189A
BIEBER DRIVEN C540

BIEBER DURHEIM 306E

Cow ID: 168H BD3P DURHEIM 48 EPD Data Generated 3/14/2025

	CED	BW	WW	YW	MILK	ME	HPG	CEM	STAY	MARB	REA	FAT
EPD	6	2.2	90	144	28	8	9	5	15	0.60	0.63	0.00
Rank	98%	96%	1%	1%	33%	75%	84%	86%	62%	15%	1%	20%
	ProS	130	HERDBUILDER	42	GRIDMASTER	89						
	RANK	14%	RANK	73%	RANK	2%						



Heifer calf due 9/2/2025 sired by BIEBER JUMPSTART J137.

50BIEBER ROSE 334H

BORN: 3/8/2020REG: 4303951100% AR 1A

BIEBER ROLLIN DEEPY118
BIEBER LET'S ROLL B563
BASIN PRIMROSE 2043
LOOSLI RIGHT ON 423

BIEBER ROSE 485D

Cow ID: 334H BIEBER ROSE 435B EPD Data Generated 3/14/2025

	CED	BW	WW	YW	MILK	ME	HPG	CEM	STAY	MARB	REA	FAT
EPD	6	2.6	87	145	28	5	15	5	14	0.51	0.35	-0.01
Rank	98%	98%	1%	1%	33%	60%	11%	86%	70%	27%	9%	4%
	ProS	144	HERDBUILDER	53	GRIDMASTER	90						
	RANK	6%	RANK	54%	RANK	2%						



Bull calf due 9/25/25 sired by either BIEBER HIGH DENSITY L316, LSF SRR DIVERSIFIED 1143J, or ANDRAS DISTINCT K052. DNA testing will be necessary to determine sire.



FALL BRED COWS

51

BIEBER ODA 223F

BORN: 2/11/2018 REG: 3958545 100% AR 1A

BIEBER SPARTACUS A193

BIEBER GLADIATOR C386

BIEBER LAURA 158W

LEACHMAN VISION A278Z

BIEBER ODA 446D

Cow ID: 223F BIEBER ODA 204W EPD Data Generated 3/14/2025

	CED	BW	WW	YW	MILK	ME	HPG	CEM	STAY	MARB	REA	FAT
EPD	17	-2.6	73	117	35	4	15	11	14	0.82	-0.01	0.02
Rank	8%	32%	17%	18%	3%	50%	13%	2%	67%	3%	67%	54%
ProS	131		HERDBUILDER	69		GRIDMASTER	61					
RANK	14%		RANK	26%		RANK	20%					



Heifer calf due 9/1/2025 sired by BIEBER BLUE CHIP H302.

52

BIEBER SUSIE 323J

BORN: 3/20/2021 REG: 4464365 100% AR 1A

HXC 5545C

KJL/CLZB KIRKLAND 8003F

HXC 107Y

BIEBER HARD DRIVEY120

BIEBER SUSIE 419D

Cow ID: 323J BIEBER SUSIE 297B EPD Data Generated 3/14/2025

	CED	BW	WW	YW	MILK	ME	HPG	CEM	STAY	MARB	REA	FAT
EPD	14	-3.8	49	74	26	7	12	7	14	0.39	-0.08	0.02
Rank	25%	16%	92%	93%	45%	72%	36%	46%	72%	50%	79%	62%
ProS	64		HERDBUILDER	37		GRIDMASTER	27					
RANK	92%		RANK	80%		RANK	84%					



Bull calf due 9/19/2025 sired by either BIEBER HIGH DENSITY L316, LSF SRR DIVERSIFIED 1143J, or ANDRAS DISTINCT K052. DNA testing will be necessary to determine sire.

53

BIEBER MAID 134H

BORN: 1/26/2020 REG: 4303185 100% AR 1A

BIEBER SPARTACUS A193

BIEBER TIBERIUS E254

BIEBER PRIMROSE 512B

BROWN BLW STATISTICIAN B5240

BIEBER MAID 262F

Cow ID: 134H BIEBER MAID 112C EPD Data Generated 3/14/2025

	CED	BW	WW	YW	MILK	ME	HPG	CEM	STAY	MARB	REA	FAT
EPD	21	-8.6	54	88	33	-6	8	12	15	0.49	0.02	0.06
Rank	1%	1%	83%	77%	6%	11%	93%	1%	53%	30%	61%	99%
ProS	108		HERDBUILDER	67		GRIDMASTER	41					
RANK	39%		RANK	30%		RANK	57%					



Heifer calf due 9/1/2025 sired by BIEBER JUMPSTART J137.

54

BIEBER DURHEIM 184H

BORN: 2/10/2020 REG: 4303371 98.4% AR 1.6% XX 1B

PIE STOCKMAN 4051

BIEBER CL STOCKMARKET E119

BIEBER CLADELLE 475C

GMRA TRINITY 5222

BIEBER DURHEIM 397E

Cow ID: 184H BIEBER DURHEIM 258B EPD Data Generated 3/14/2025

	CED	BW	WW	YW	MILK	ME	HPG	CEM	STAY	MARB	REA	FAT
EPD	11	0.1	80	129	24	0	13	9	10	0.80	0.25	0.06
Rank	67%	80%	5%	6%	58%	32%	32%	14%	96%	3%	18%	99%
ProS	113		HERDBUILDER	40		GRIDMASTER	72					
RANK	33%		RANK	75%		RANK	9%					



Bull calf due 9/24/2025 sired by either BIEBER HIGH DENSITY L316, LSF SRR DIVERSIFIED 1143J, or ANDRAS DISTINCT K052. DNA testing will be necessary to determine sire.



OPEN HEIFERS

55 BIEBER CENTURIA 348H

BORN: 3/18/2020 REG: 4304009 100% AR 1A

LACY GOLD BAR 8123

BIEBER HARD DRIVE Y120

BIEBER LAURA 158W

BIEBER ROUSE SAMURAI X22

BIEBER CENTURIA 196C

Cow ID: 348H BIEBER CENTURIA 263Y EPD Data Generated 3/14/2025

	CED	BW	WW	YW	MILK	ME	HPG	CEM	STAY	MARB	REA	FAT
EPD	13	-2.4	75	112	21	2	14	7	16	0.55	0.21	0.00
Rank	41%	36%	13%	26%	83%	41%	18%	54%	42%	21%	24%	19%
PROS	120		HERDBUILDER	70		GRIDMASTER	50					
RANK	25%		RANK	26%		RANK	40%					



Heifer calf due 9/4/2025 sired by either BIEBER JUMPSTART J137, BIEBER HIGH DENSITY L316, LSF SRR DIVERSIFIED 1143J, or ANDRAS DISTINCT K052. DNA testing will be necessary to determine sire.

57 BIEBER LASS 133K

BORN: 1/17/2022 REG: 4620521 100% AR 1A

BIEBER CL ATOMIC C218

BIEBER CL ENERGIZE F121

BIEBER CLADELLE 575D

BIEBER CL STOCKMAN E116

BIEBER LASS 212H

Cow ID: 133K BIEBER LASS 262E EPD Data Generated 3/14/2025

	CED	BW	WW	YW	MILK	ME	HPG	CEM	STAY	MARB	REA	FAT
EPD	17	-2.3	78	134	26	10	16	9	13	0.54	0.13	0.03
Rank	8%	37%	8%	3%	48%	86%	5%	9%	77%	22%	37%	81%
PROS	135		HERDBUILDER	57		GRIDMASTER	78					
RANK	11%		RANK	48%		RANK	5%					



Heifer calf due 9/1/2025 sired by BIEBER BLUE CHIP H302.

59 BIEBER TILLY 163E

BORN: 1/21/2017 REG: 3751863 100% AR 1A

BIEBER ROUSE SAMURAI X22

BIEBER SPARTACUS A193

BIEBER TILLY 233U

BIEBER HARD DRIVE Y120

BIEBER TILLY 140C

Cow ID: 163E BIEBER TILLY 304A EPD Data Generated 3/14/2025

	CED	BW	WW	YW	MILK	ME	HPG	CEM	STAY	MARB	REA	FAT
EPD	18	-4.1	67	105	23	3	10	9	19	0.71	0.30	0.02
Rank	4%	13%	36%	40%	70%	43%	72%	16%	16%	7%	13%	64%
PROS	145		HERDBUILDER	73		GRIDMASTER	73					
RANK	5%		RANK	22%		RANK	9%					



Bull calf due 9/2/2025 sired by BIEBER JUMPSTART J137.

56 BIEBER TILLY 337F

BORN: 2/27/2018 REG: 3958323 100% AR II

BIEBER SPARTACUS A193

BIEBER IN THE BLACK D315

BIEBER ROSE 469Z

SCHULER ENDURANCE 2101Z

BIEBER TILLY 187B

Cow ID: 337F BIEBER TILLY 103Y EPD Data Generated 3/14/2025

	CED	BW	WW	YW	MILK	ME	HPG	CEM	STAY	MARB	REA	FAT
EPD	12	-3.8	55	77	29	-2	15	8	14	0.87	-0.28	0.05
Rank	53%	16%	80%	91%	25%	22%	11%	35%	70%	2%	97%	96%
PROS	120		HERDBUILDER	60		GRIDMASTER	59					
RANK	25%		RANK	41%		RANK	23%					



This cow is black. Bull calf due 9/1/2025 sired by BIEBER CHECKMATE K126.

58 BIEBER ENCHANTRESS 388G

BORN: 2/28/2019 REG: 4140520 100% AR 1A

BIEBER ROLLIN DEEPLY118

BIEBER LET'S ROLL B563

BASIN PRIMROSE 2043

ANDRAS FUSION R236

BIEBER ENCHANTRESS 451B

Cow ID: 388G BASIN ENCHANTRESS 8435 EPD Data Generated 3/14/2025

	CED	BW	WW	YW	MILK	ME	HPG	CEM	STAY	MARB	REA	FAT
EPD	16	-2.5	71	115	26	9	16	10	17	0.31	0.12	0.02
Rank	11%	34%	22%	20%	45%	80%	7%	7%	28%	69%	39%	60%
PROS	135		HERDBUILDER	81		GRIDMASTER	53					
RANK	11%		RANK	13%		RANK	33%					



Bull calf due 9/24/2025 sired by either BIEBER HIGH DENSITY L316, LSF SRR DIVERSIFIED 1143J, or ANDRAS DISTINCT K052. DNA testing will be necessary to determine sire.

60 BIEBER ENCHANTRESS 247H

BORN: 2/20/2020 REG: 4303631 100% AR 1A

PIE STOCKMAN 4051

BIEBER CL STOCKMAN E116

BIEBER CL DATELINE 115C

ANDRAS FUSION R236

BIEBER ENCHANTRESS 451B

Cow ID: 247H BASIN ENCHANTRESS 8435 EPD Data Generated 3/14/2025

	CED	BW	WW	YW	MILK	ME	HPG	CEM	STAY	MARB	REA	FAT
EPD	17	-3.3	67	111	25	0	11	10	18	0.52	0.29	0.01
Rank	4%	22%	35%	28%	54%	32%	52%	4%	27%	25%	14%	42%
PROS	153		HERDBUILDER	81		GRIDMASTER	71					
RANK	3%		RANK	12%		RANK	9%					



Unsexed calf due 9/1/2025 sired by BIEBER CHECKMATE K126.

FALL BRED COWS

61 BIEBER RED GIRL 301K

BORN: 3/1/2022 REG: 4621137 100% AR 1A

BIEBER HARD DRIVE E640

BIEBER FLASHDRIVE G266

BIEBER FLOWER 312E

BIEBER DEEP END B597

BIEBER RED GIRL 504E

Cow ID: 301K BIEBER RED GIRL 392B EPD Data Generated 3/14/2025

	CED	BW	WW	YW	MILK	ME	HPG	CEM	STAY	MARB	REA	FAT
EPD	12	0.1	96	157	29	22	18	10	17	0.67	0.52	0.01
Rank	57%	80%	1%	1%	21%	99%	1%	4%	28%	9%	2%	35%
ProS	161		HERDBUILDER	82		GRIDMASTER	79					
RANK	2%		RANK	11%		RANK	5%					



Unsexed calf due 10/12/2025 sired by either BIEBER HIGH DENSITY L316, LSF SRR DIVERSIFIED 1143J, or ANDRAS DISTINCT K052. DNA testing will be necessary to determine sire.

63 BIEBER DURHEIM 179H

BORN: 2/10/2020 REG: 4303349 99.5% AR 0.5% XX 1B

BIEBER SPARTACUS A193

BIEBER MAXIMUS E294

BIEBER LINCOLN 189A

LOOSLI RIGHT ON 423

BIEBER DURHEIM 119E

Cow ID: 179H BIEBER DURHEIM 155C EPD Data Generated 3/14/2025

	CED	BW	WW	YW	MILK	ME	HPG	CEM	STAY	MARB	REA	FAT
EPD	11	-3.1	73	117	27	-2	11	8	12	0.29	0.29	0.02
Rank	75%	24%	17%	18%	37%	23%	55%	30%	86%	73%	14%	64%
ProS	96		HERDBUILDER	49		GRIDMASTER	47					
RANK	57%		RANK	62%		RANK	45%					



Bull calf due 8/30/2025 sired by BIEBER CHECKMATE K126.

62 BIEBER EP ROSE 124G

BORN: 1/9/2019 REG: 4140860 100% AR 1A

LSF SAGA 1040Y

PIE STOCKMAN 4051

PIE LAKOTA 046

BIEBER LB MITIGATOR C314

BIEBER EP ROSE 127E

Cow ID: 124G BIEBER EP ROSE 257C EPD Data Generated 3/14/2025

	CED	BW	WW	YW	MILK	ME	HPG	CEM	STAY	MARB	REA	FAT
EPD	10	1.3	91	149	25	31	14	7	13	0.49	0.32	0.03
Rank	79%	92%	1%	1%	50%	99%	14%	37%	75%	30%	11%	75%
ProS	82		HERDBUILDER	29		GRIDMASTER	53					
RANK	76%		RANK	88%		RANK	33%					



Unsexed calf due 8/30/2025 sired by BIEBER CHECKMATE K126.

64 BIEBER PRIMROSE 499J

BORN: 5/17/2021 REG: 4498063 100% AR 1A

BIEBER CL ATOMIC C218

BIEBER DC WARHEAD F120

BIEBER SURPRISE 243D

BIEBER HARD DRIVE Y120

BIEBER PRIMROSE 469B

Cow ID: 499J BASIN PRIMROSE 24T9 EPD Data Generated 3/14/2025

	CED	BW	WW	YW	MILK	ME	HPG	CEM	STAY	MARB	REA	FAT
EPD	11	-0.6	79	121	20	5	14	7	15	0.53	0.13	0.02
Rank	70%	69%	7%	12%	85%	60%	15%	37%	52%	24%	37%	51%
ProS	109		HERDBUILDER	68		GRIDMASTER	42					
RANK	38%		RANK	29%		RANK	57%					



Heifer calf due 9/1/2025 sired by BIEBER JUMPSTART J137.



FALL BRED COWS

65

BIEBER DURHEIM 341J

BORN: 5/4/2021 REG: 4497523 92.9% AR 6.1% SM 1.1% XX 1B

LEACHMAN PLEDGE A282Z

KJL/CLZB COMPLETE 7000E

HXC 507C

BIEBER LB MITIGATOR C314

BIEBER DURHEIM 475F

Cow ID: 341J BIEBER DURHEIM 211A EPD Data Generated 3/14/2025

	CED	BW	WW	YW	MILK	ME	HPG	CEM	STAY	MARB	REA	FAT
EPD	11	-1.4	74	134	22	3	13	6	14	0.42	0.08	0.01
Rank	69%	54%	14%	3%	73%	47%	30%	72%	65%	44%	48%	29%
ProS	107		HERDBUILDER	52		GRIDMASTER	55					
RANK	40%		RANK	55%		RANK	30%					



Heifer calf due 9/23/2025 sired by either BIEBER HIGH DENSITY L316, LSF SRR DIVERSIFIED 1143J, or ANDRAS DISTINCT K052. DNA testing will be necessary to determine sire.

67

BIEBER TILLY 580G

BORN: 3/15/2019 REG: 4153984 100% AR II

BIEBER ROUSE SAMURAI X22

BIEBER SPARTACUS A193

BIEBER TILLY 233U

BIEBER BOONE 8000

BIEBER TILLY 399W

Cow ID: 580G BIEBER TILLY 303S EPD Data Generated 3/14/2025

	CED	BW	WW	YW	MILK	ME	HPG	CEM	STAY	MARB	REA	FAT
EPD	14	-1.8	77	120	25	5	10	7	17	0.80	0.18	0.05
Rank	30%	46%	10%	14%	57%	60%	74%	48%	38%	3%	28%	96%
ProS	123		HERDBUILDER	60		GRIDMASTER	63					
RANK	21%		RANK	43%		RANK	18%					



Bull calf due 8/24/2025 sired by BIEBER CHECKMATE K126. This cow is black. She is a maternal sister to the great Rollin DeepY118.

66

BIEBER DURHEIM 143H

BORN: 1/31/2020 REG: 4303211 98.3% AR 1.7% XX 1B

BIEBER SPARTACUS A193

BIEBER GLADIATOR C386

BIEBER LAURA 158W

BIEBER LB MITIGATOR C314

BIEBER DURHEIM 181F

Cow ID: 143H BIEBER DURHEIM 201D EPD Data Generated 3/14/2025

	CED	BW	WW	YW	MILK	ME	HPG	CEM	STAY	MARB	REA	FAT
EPD	13	-2.2	74	131	24	17	14	9	14	0.63	0.10	0.01
Rank	42%	39%	15%	5%	61%	98%	20%	14%	73%	12%	43%	31%
ProS	113		HERDBUILDER	43		GRIDMASTER	69					
RANK	33%		RANK	70%		RANK	11%					



Heifer calf due 9/1/2025 sired by BIEBER CHECKMATE K126.

68

BIEBER ROSE 427G

BORN: 3/15/2019 REG: 4140630 100% AR 1A

BIEBER ROLLIN DEEPLY118

BIEBER LET'S ROLL B563

BASIN PRIMROSE 2043

PARINGA IRON ORE E27

BIEBER ROSE 432C

Cow ID: 427G BIEBER ROSE 401A EPD Data Generated 3/14/2025

	CED	BW	WW	YW	MILK	ME	HPG	CEM	STAY	MARB	REA	FAT
EPD	14	-3.4	61	104	19	1	15	7	17	0.67	0.31	0.03
Rank	27%	20%	60%	43%	89%	36%	8%	41%	29%	9%	12%	68%
ProS	166		HERDBUILDER	78		GRIDMASTER	88					
RANK	1%		RANK	16%		RANK	2%					



Bull calf due 9/2/2025 sired by BIEBER JUMPSTART J137.



OPEN HEIFERS

RED ANGUS OPEN HEIFERS

Video of all lots will be available prior to sale day.

The open replacement heifers in this offering are out of some of our best cowlines and have data at the top of the breed. They have been given all pre-breeding vaccinations and are ready to breed. You can buy these lots with the confidence that we would breed them ourselves if they were not offered here.

These lots will open at 7:00 am CDT on Thursday, April 17 and close at 7:00 pm CDT on Thursday, April 17. Please see the bidding procedures and auction format sections on the first page of the catalog for more information on how the sale will run.

70 BIEBER ENCHANTRESS 431M

BORN: 5/22/2024 REG: 4985695 100% AR 1A

ALC LEVERAGE H14
LSF MEW FULCRUM 2600K
MEW COVERGIRL 937G

BIEBER HIGH DENSITY H558
BIEBER ENCHANTRESS 247K

Cow ID: 431M		BIEBER ENCHANTRESS 451G										EPD Data Generated 3/17/2025	
	CED	BW	WW	YW	MILK	ME	HPG	CEM	STAY	MARB	REA	FAT	
EPD	12	-3.2	83	128	29	17	13	7	17	0.74	0.42	0.01	
Rank	60%	25%	5%	10%	17%	97%	29%	54%	19%	8%	7%	29%	
Wts.		69	628										
PROS	128		HERDBUILDER	60		GRIDMASTER	68						
RANK	18%		RANK	37%		RANK	17%						

72 BIEBER PRIMROSE 434M

BORN: 5/24/2024 REG: 4985709 100% AR 1A

LSF SRR RANCHER 7190E
LSF SRR MADDUX 0164H
LSF SRR CRYSTAL C5192

BIEBER HARD DRIVE E640
BIEBER PRIMROSE 270J

Cow ID: 434M		BIEBER PRIMROSE 444F										EPD Data Generated 3/17/2025	
	CED	BW	WW	YW	MILK	ME	HPG	CEM	STAY	MARB	REA	FAT	
EPD	1	5.5	87	142	24	16	15	1	15	0.85	0.18	0.03	
Rank	99%	99%	2%	3%	72%	96%	7%	99%	47%	3%	39%	65%	
Wts.		108	513										
PROS	114		HERDBUILDER	28		GRIDMASTER	86						
RANK	35%		RANK	91%		RANK	4%						

69 BIEBER CL DATELINE 356M

BORN: 3/23/2024 REG: 4952874 100% AR 1A

9 MILE FRANCHISE 6305
LSF SRR BLANK CHECK 0162H
LSF SRR LANA C5050 E7038

9 MILE FRANCHISE 6305
BIEBER CL DATELINE 173G

Cow ID: 356M		BIEBER CL DATELINE 605E										EPD Data Generated 3/17/2025	
	CED	BW	WW	YW	MILK	ME	HPG	CEM	STAY	MARB	REA	FAT	
EPD	13	-1.8	78	125	33	4	13	10	12	0.52	0.34	0.04	
Rank	56%	49%	11%	13%	3%	48%	29%	10%	82%	29%	17%	90%	
Wts.		61	474										
PROS	118		HERDBUILDER	52		GRIDMASTER	65						
RANK	29%		RANK	52%		RANK	21%						

71 BIEBER CL IDEAL 383M

BORN: 5/2/2024 REG: 4985415 100% AR 1A

WFL FRANKLY F8276
LARR PAYCHECK 0728
LARR MISS CC FLOWER 7528

BIEBER CL STOCKMARKET E119
BIEBER CL IDEAL 449G

Cow ID: 383M		BIEBER CL IDEAL 283E										EPD Data Generated 3/17/2025	
	CED	BW	WW	YW	MILK	ME	HPG	CEM	STAY	MARB	REA	FAT	
EPD	13	-0.4	101	161	23	17	18	10	11	0.77	0.29	0.07	
Rank	47%	77%	1%	1%	80%	98%	1%	10%	88%	6%	22%	99%	
Wts.		73	514										
PROS	111		HERDBUILDER	49		GRIDMASTER	62						
RANK	39%		RANK	59%		RANK	26%						

73 BIEBER DURHEIM 388M

BORN: 5/4/2024 REG: 4985511 95.3% AR 4.7% XX 1B

WFL FRANKLY F8276
LARR PAYCHECK 0728
LARR MISS CC FLOWER 7528

BIEBER GLADIATOR C386
BIEBER DURHEIM 323F

Cow ID: 388M		BIEBER DURHEIM 307A										EPD Data Generated 3/17/2025	
	CED	BW	WW	YW	MILK	ME	HPG	CEM	STAY	MARB	REA	FAT	
EPD	16	-3.2	76	126	27	4	15	11	8	0.77	-0.10	0.01	
Rank	10%	25%	15%	12%	36%	52%	5%	2%	98%	6%	89%	29%	
Wts.		65	483										
PROS	107		HERDBUILDER	37		GRIDMASTER	70						
RANK	44%		RANK	79%		RANK	15%						

OPEN HEIFERS

74

BIEBER PRIMROSE 169M

BORN: 2/10/2024

REG: 4951954

100% AR 1A

RED MRLA RESOURCE 137E

PIE ASSET 1276

PIE RUBY 520

BIEBER MAXIMUS E294

BIEBER MIMI 298J

Cow ID: 169M

BIEBER MIMI 443C

EPD Data Generated 3/17/2025

	CED	BW	WW	YW	MILK	ME	HPG	CEM	STAY	MARB	REA	FAT
EPD	14	-4.2	48	81	27	11	11	9	16	0.55	-0.01	0.02
Rank	35%	12%	96%	90%	33%	86%	69%	20%	39%	25%	77%	47%
Wts.		56	367									
PROS	128		HERDBUILDER	45		GRIDMASTER	83					
RANK	17%		RANK	65%		RANK	5%					

75

BIEBER SUSIE 160M

BORN: 2/9/2024

REG: 4951922

100% AR 1A

RED MRLA RESOURCE 137E

PIE ASSET 1276

PIE RUBY 520

BIEBER CL STOCKMARKET E119

BIEBER SUSIE 217J

Cow ID: 160M

BIEBER SUSIE 244B

EPD Data Generated 3/17/2025

	CED	BW	WW	YW	MILK	ME	HPG	CEM	STAY	MARB	REA	FAT
EPD	15	-4.2	66	111	26	3	11	10	15	0.71	-0.42	0.03
Rank	20%	12%	49%	35%	47%	47%	56%	5%	40%	9%	99%	74%
Wts.		55	450									
PROS	112		HERDBUILDER	65		GRIDMASTER	47					
RANK	37%		RANK	25%		RANK	59%					

76

BIEBER ROSE 416M

BORN: 5/14/2024

REG: 4985649

100% AR 1A

WEDEL RANCHMASTER 9052G

BROWN PRIORITY J428

BROWN MS SURE FIRE E1589

BIEBER TIBERIUS E254

BIEBER ROSE 301G

Cow ID: 416M

BIEBER ROSE 162C

EPD Data Generated 3/17/2025

	CED	BW	WW	YW	MILK	ME	HPG	CEM	STAY	MARB	REA	FAT
EPD	20	-5.8	69	110	34	9	11	12	14	0.57	0.13	0.03
Rank	1%	3%	35%	37%	2%	78%	54%	1%	59%	22%	48%	70%
Wts.		68	504									
PROS	109		HERDBUILDER	53		GRIDMASTER	56					
RANK	41%		RANK	50%		RANK	36%					

77

BIEBER DURHEIM 475M

BORN: 6/11/2024

REG: 4985861

95.3% AR 2.9% SM 1.8% XX 1B

WEDEL RANCHMASTER 9052G

BROWN PRIORITY J428

BROWN MS SURE FIRE E1589

BIEBER CLATOMIC C218

BIEBER DURHEIM 203G

Cow ID: 475M

BIEBER DURHEIM 454E

EPD Data Generated 3/17/2025

	CED	BW	WW	YW	MILK	ME	HPG	CEM	STAY	MARB	REA	FAT
EPD	17	-4.4	67	101	30	8	14	10	11	0.57	0.04	0.04
Rank	7%	10%	46%	58%	12%	76%	13%	5%	89%	22%	67%	82%
Wts.		75	508									
PROS	83		HERDBUILDER	40		GRIDMASTER	43					
RANK	80%		RANK	76%		RANK	68%					

78

BIEBER TILLY 465M

BORN: 6/1/2024

REG: 4985811

100% AR 1A

9 MILE FRANCHISE 6305

LSF SRR BLANK CHECK 0162H

LSF SRR LANA C5050 E7038

BIEBER SPARTACUS A193

BIEBER TILLY 580G

Cow ID: 465M

BIEBER TILLY 399W

EPD Data Generated 3/17/2025

	CED	BW	WW	YW	MILK	ME	HPG	CEM	STAY	MARB	REA	FAT
EPD	11	-2.1	71	115	29	6	10	7	16	0.63	0.28	0.05
Rank	72%	43%	28%	27%	20%	63%	73%	57%	39%	16%	23%	94%
Wts.		78	466									
PROS	112		HERDBUILDER	54		GRIDMASTER	58					
RANK	38%		RANK	49%		RANK	32%					

79

BIEBER KANNA 359M

BORN: 4/1/2024

REG: 4952804

100% AR 1A

RED MRLA RESOURCE 137E

PIE ASSET 1276

PIE RUBY 520

9 MILE FRANCHISE 6305

BIEBER KANNA 326H

Cow ID: 359M

BIEBER KANNA 233A

EPD Data Generated 3/17/2025

	CED	BW	WW	YW	MILK	ME	HPG	CEM	STAY	MARB	REA	FAT
EPD	7	1.2	61	110	28	6	11	5	14	0.41	0.00	0.03
Rank	98%	93%	69%	36%	26%	62%	65%	83%	59%	51%	75%	73%
Wts.		83	521									
PROS	114		HERDBUILDER	38		GRIDMASTER	76					
RANK	35%		RANK	79%		RANK	9%					

OPEN HEIFERS

80BIEBER ROSE 400M

BORN: 5/8/2024REG: 4985575100% AR 1A

LSF MEW X-FACTOR 6693D
LSF SRR EXACTLY 1144J
LSF SRR KRISHNA C5329 G9213
BIEBER CL ENERGIZE F121

BIEBER ROSE 130J

Cow ID: 400MBIEBER ROSE 301GEPD Data Generated 3/17/2025

	CED	BW	WW	YW	MILK	ME	HPG	CEM	STAY	MARB	REA	FAT
EPD	15	-0.9	88	152	28	16	15	9	15	0.96	0.29	0.02
Rank	21%	66%	2%	1%	31%	96%	9%	15%	46%	1%	22%	48%
Wts.		67	542									
PROS	175		HERDBUILDER	61		GRIDMASTER	114					
RANK	1%		RANK	34%		RANK	1%					

81BIEBER MAIDMARION 436M

BORN: 5/24/2024REG: 4985717100% AR 1A

BECKTON ACCENT D615 D3
PIE ACCENT 1612
PIE RASPBERRY TUO 999
BIEBER CL STOCKMARKET E119

BIEBER JOAN 389H

Cow ID: 436MBIEBER JOAN 363FEPD Data Generated 3/17/2025

	CED	BW	WW	YW	MILK	ME	HPG	CEM	STAY	MARB	REA	FAT
EPD	15	-2.2	77	128	28	7	14	10	19	0.79	-0.01	0.06
Rank	18%	42%	12%	10%	24%	69%	11%	6%	5%	5%	77%	98%
Wts.		65	546									
PROS	157		HERDBUILDER	96		GRIDMASTER	61					
RANK	2%		RANK	2%		RANK	28%					

82BIEBER TILLY 108M

BORN: 1/12/2024REG: 4951732100% AR 1A

BIEBER CL ENERGIZE F121
BIEBER EMPOWER J510
BIEBER PRIMROSE 497B
BIEBER CL STOCKMARKET E119

BIEBER TILLY 252K

Cow ID: 108MBIEBER TILLY 563DEPD Data Generated 3/17/2025

	CED	BW	WW	YW	MILK	ME	HPG	CEM	STAY	MARB	REA	FAT
EPD	17	-4.1	72	119	26	8	15	11	18	0.67	0.20	0.08
Rank	6%	13%	26%	20%	48%	76%	6%	3%	15%	12%	34%	99%
Wts.		51	455									
PROS	147		HERDBUILDER	84		GRIDMASTER	63					
RANK	5%		RANK	6%		RANK	24%					

83BIEBER DURHEIM 453M

BORN: 5/29/2024REG: 498577396.7% AR 3.3% XX 1B

HXC 5545C
KJL/CLZB KIRKLAND 8003F
HXC 107Y
BIEBER CL ATOMIC C218

BIEBER DURHEIM 304F

Cow ID: 453MBIEBER DURHEIM 272AEPD Data Generated 3/17/2025

	CED	BW	WW	YW	MILK	ME	HPG	CEM	STAY	MARB	REA	FAT
EPD	6	1.2	74	125	30	13	13	3	13	0.20	0.06	0.01
Rank	99%	93%	19%	13%	14%	92%	20%	98%	68%	94%	63%	39%
Wts.		105	604									
PROS	58		HERDBUILDER	19		GRIDMASTER	38					
RANK	97%		RANK	96%		RANK	76%					



OPEN HEIFERS

84BIEBER GALLEE 432M

BORN: 5/22/2024REG: 4985699100% AR 1A

LSF SRR RANCHER 7190E
LSF SRR MADDUX 0164H
LSF SRR CRYSTAL C5192
BIEBER CL STOCKMAN E116

BIEBER GALLEE 356J

Cow ID: 432M BIEBER GALLEE 550D EPD Data Generated 3/17/2025

	CED	BW	WW	YW	MILK	ME	HPG	CEM	STAY	MARB	REA	FAT
EPD	10	-1.2	88	143	27	17	14	8	16	0.33	0.07	0.06
Rank	86%	61%	2%	2%	40%	98%	12%	37%	33%	76%	61%	97%
Wts.		78	645									
ProS	111		HERDBUILDER	61		GRIDMASTER	51					
RANK	38%		RANK	35%		RANK	47%					



85BIEBER CL ADELLE 418M

BORN: 5/16/2024REG: 4985417100% AR 1A

WEDEL RANCHMASTER 9052G
BROWN PRIORITY J428
BROWN MS SURE FIRE E1589
BIEBER CL STOCKMAN E116

BIEBER CL ADELLE 476J

Cow ID: 418M BIEBER CL ADELLE 575D EPD Data Generated 3/17/2025

	CED	BW	WW	YW	MILK	ME	HPG	CEM	STAY	MARB	REA	FAT
EPD	17	-4.3	73	121	29	4	14	9	17	0.70	0.29	0.04
Rank	6%	11%	23%	18%	23%	50%	14%	11%	22%	10%	22%	84%
Wts.		73	529									
ProS	144		HERDBUILDER	78		GRIDMASTER	66					
RANK	6%		RANK	10%		RANK	20%					



Lot 85 is out of a maternal sibling to Energize F121.

86BIEBER MIMI 422M

BORN: 5/18/2024REG: 4985675100% AR 1A

RED LWNBRG FALLOUT 100G
COOKSLEY FALLOUT 2607
TARA 4472 SCN
BIEBER TECUMSEH H575

BIEBER MIMI 327K

Cow ID: 422M BIEBER MIMI 443C EPD Data Generated 3/17/2025

	CED	BW	WW	YW	MILK	ME	HPG	CEM	STAY	MARB	REA	FAT
EPD	13	-0.6	68	109	30	9	12	7	14	0.81	0.06	0.01
Rank	53%	74%	39%	39%	16%	81%	33%	45%	55%	5%	63%	29%
Wts.		80	607									
ProS	129		HERDBUILDER	47		GRIDMASTER	82					
RANK	17%		RANK	63%		RANK	5%					



87BIEBER CL DATLINE 474M

BORN: 6/6/2024REG: 4985427100% AR 1A

9 MILE FRANCHISE 6305
LSF SRR BLANK CHECK 0162H
LSF SRR LANA C5050 E7038
BIEBER LB MITIGATOR C314

BIEBER CL DATELINE 535F

Cow ID: 474M BIEBER DATELINE 308Y EPD Data Generated 3/17/2025

	CED	BW	WW	YW	MILK	ME	HPG	CEM	STAY	MARB	REA	FAT
EPD	9	1.5	77	124	30	6	14	6	11	0.17	0.46	0.01
Rank	90%	95%	14%	14%	13%	61%	20%	72%	88%	96%	5%	39%
Wts.		91	523									
ProS	72		HERDBUILDER	36		GRIDMASTER	36					
RANK	90%		RANK	81%		RANK	80%					



Lot 87 is out of a maternal sibling to Atomic C218.



OPEN HEIFERS

88BIEBER ENCHANTRESS 395M

BORN: 5/6/2024REG: 4985539100% AR 1A

WFL FRANKLY F8276
LARR PAYCHECK 0728
LARR MISS CC FLOWER 7528
WFL PROFITMAKER E7030

BIEBER ENCHANTRESS 116J

Cow ID: 395M BIEBER ENCHANTRESS 319G EPD Data Generated 3/17/2025

	CED	BW	WW	YW	MILK	ME	HPG	CEM	STAY	MARB	REA	FAT
EPD	16	-4.4	96	155	26	20	13	11	9	0.59	0.19	0.04
Rank	13%	10%	1%	1%	42%	99%	21%	2%	96%	20%	36%	88%
Wts.		56	579									
PROS	95		HERDBUILDER	23		GRIDMASTER	71					
RANK	63%		RANK	94%		RANK	13%					



89BIEBER PRIMROSE 450M

BORN: 5/28/2024REG: 4985879100% AR 1A

LSF SRR RANCHER 7190E
LSF SRR MADDUX 0164H
LSF SRR CRYSTAL C5192
BIEBER CL ATOMIC C218

BIEBER PRIMROSE 541H

Cow ID: 450M BIEBER PRIMROSE 240D EPD Data Generated 3/17/2025

	CED	BW	WW	YW	MILK	ME	HPG	CEM	STAY	MARB	REA	FAT
EPD	7	1.2	85	141	25	10	15	6	15	0.62	-0.04	0.04
Rank	97%	93%	4%	3%	55%	82%	8%	70%	43%	16%	82%	90%
Wts.		95	595									
PROS	130		HERDBUILDER	60		GRIDMASTER	69					
RANK	16%		RANK	36%		RANK	16%					



90BIEBER PRIMROSE 427M

BORN: 5/19/2024REG: 4985683100% AR 1A

WEDEL RANCHMASTER 9052G
BROWN PRIORITY J428
BROWN MS SURE FIRE E1589
WFL PROFITMAKER E7030

BIEBER PRIMROSE 143J

Cow ID: 427M BIEBER PRIMROSE 194G EPD Data Generated 3/17/2025

	CED	BW	WW	YW	MILK	ME	HPG	CEM	STAY	MARB	REA	FAT
EPD	20	-7.4	62	97	33	-8	14	12	12	0.65	0.17	0.06
Rank	1%	1%	64%	67%	4%	13%	18%	1%	82%	14%	40%	99%
Wts.		61	490									
PROS	127		HERDBUILDER	65		GRIDMASTER	61					
RANK	19%		RANK	26%		RANK	27%					



91BIEBER CL PRIMROSE 423M

BORN: 5/18/2024REG: 4985419100% AR 1A

BB PROPULSION 9096
MCCANN PROPULSION 2177
CRUMP NANCY 5172
LSF SRR MADDUX 0164H

BIEBER CL PRIMROSE 333K

Cow ID: 423M BIEBER CL PRIMROSE 261G EPD Data Generated 3/17/2025

	CED	BW	WW	YW	MILK	ME	HPG	CEM	STAY	MARB	REA	FAT
EPD	5	1.9	74	125	24	6	16	4	14	0.65	-0.17	0.04
Rank	99%	96%	19%	12%	72%	63%	3%	95%	67%	14%	95%	83%
Wts.		89	473									
PROS	106		HERDBUILDER	45		GRIDMASTER	61					
RANK	47%		RANK	67%		RANK	27%					



92BIEBER MAIDMARION 473M

BORN: 6/6/2024REG: 4985841100% AR II

RED LWNBRG FALLOUT 100G
COOKSLEY FALLOUT 2607
TARA 4472 SCN
BIEBER HIGH DENSITY H558

BIEBER MAIDMARION 493K

Cow ID: 473M BIEBER MAIDMARION 325F EPD Data Generated 3/17/2025

	CED	BW	WW	YW	MILK	ME	HPG	CEM	STAY	MARB	REA	FAT
EPD	10	-1.8	64	97	27	12	13	7	15	0.59	0.29	0.03
Rank	81%	49%	59%	67%	36%	90%	33%	62%	41%	20%	22%	70%
Wts.		78	501									
PROS	109		HERDBUILDER	46		GRIDMASTER	63					
RANK	41%		RANK	63%		RANK	24%					



This heifer has ineligible white making her a Category II.

93BIEBER CL DATELINE 459M

BORN: 5/31/2024REG: 4985425100% AR 1A

RED MRLA RESOURCE 137E
PIE ASSET 1276
PIE RUBY 520
BIEBER HARD DRIVE E640

BIEBER CL DATELINE 430H

Cow ID: 459M BIEBER CL DATELINE 535F EPD Data Generated 3/17/2025

	CED	BW	WW	YW	MILK	ME	HPG	CEM	STAY	MARB	REA	FAT
EPD	10	1.3	73	128	29	11	13	6	14	0.29	0.18	0.01
Rank	83%	94%	24%	10%	20%	86%	23%	77%	59%	83%	39%	29%
Wts.		82	537									
PROS	104		HERDBUILDER	43		GRIDMASTER	61					
RANK	50%		RANK	71%		RANK	26%					



OPEN HEIFERS

94

BIEBER CLEMENCY 419M

BORN: 5/16/2024

REG: 4985667

100% AR 1A

RED LWNBRG FALLOUT 100G

COOKSLEY FALLOUT 2607

TARA 4472 SCN

BIEBER FLASHDRIVE G266

BIEBER CLEMENCY 279K

Cow ID: 419M

BIEBER CLEMENCY 299E

EPD Data Generated 3/17/2025

	CED	BW	WW	YW	MILK	ME	HPG	CEM	STAY	MARB	REA	FAT
EPD	14	-0.9	62	105	26	15	13	9	16	0.70	0.09	0.04
Rank	30%	66%	63%	48%	51%	96%	29%	20%	32%	10%	57%	84%
Wts.		67	461									
ProS	127		HERDBUILDER	53		GRIDMASTER	75					
RANK	18%		RANK	51%		RANK	10%					

95

BIEBER REBELLA 471M

BORN: 6/5/2024

REG: 4985833

100% AR 1A

RED MRLA RESOURCE 137E

PIE ASSET 1276

PIE RUBY 520

BIEBER MAXIMUS E294

BIEBER REBELLA 394H

Cow ID: 471M

BIEBER REBELLA 208C

EPD Data Generated 3/17/2025

	CED	BW	WW	YW	MILK	ME	HPG	CEM	STAY	MARB	REA	FAT
EPD	3	0.9	79	132	25	14	10	3	15	0.32	0.13	0.02
Rank	99%	91%	10%	7%	59%	95%	75%	98%	48%	78%	48%	60%
Wts.		105	438									
ProS	77		HERDBUILDER	24		GRIDMASTER	53					
RANK	86%		RANK	94%		RANK	42%					

96

BIEBER JOAN 470M

BORN: 6/5/2024

REG: 4985831

100% AR 1A

9 MILE FRANCHISE 6305

PIE FRANCHISE 9031

PIE FAYETTE 7106

9 MILE FRANCHISE 6305

BIEBER JOAN 363G

Cow ID: 470M

BIEBER JOAN 383C

EPD Data Generated 3/17/2025

	CED	BW	WW	YW	MILK	ME	HPG	CEM	STAY	MARB	REA	FAT
EPD	7	0.5	69	124	37	10	12	7	12	0.42	0.18	0.03
Rank	97%	87%	35%	14%	1%	84%	47%	58%	83%	49%	39%	76%
Wts.		91	555									
ProS	100		HERDBUILDER	30		GRIDMASTER	70					
RANK	56%		RANK	89%		RANK	15%					

97

BIEBER ENCHANTRESS 363M

BORN: 4/22/2024

REG: 4985431

100% AR 1A

RED LWNBRG FALLOUT 100G

COOKSLEY FALLOUT 2607

TARA 4472 SCN

BIEBER CL STOCKMARKET E119

BIEBER ENCHANTRESS 282K

Cow ID: 363M

BIEBER ENCHANTRESS 532C

EPD Data Generated 3/17/2025

	CED	BW	WW	YW	MILK	ME	HPG	CEM	STAY	MARB	REA	FAT
EPD	19	-5.1	52	90	30	10	13	11	15	0.69	0.02	0.04
Rank	2%	6%	91%	79%	15%	83%	30%	1%	48%	11%	71%	88%
Wts.		49	509									
ProS	114		HERDBUILDER	54		GRIDMASTER	60					
RANK	34%		RANK	49%		RANK	28%					

98

BIEBER DURHEIM 462M

BORN: 5/31/2024

REG: 4985793

96.1% AR 3.9% XX 1B

WEDEL RANCHMASTER 9052G

BROWN PRIORITY J428

BROWN MS SURE FIRE E1589

BIEBER CLATOMIC C218

BIEBER DURHEIM 190H

Cow ID: 462M

BIEBER DURHEIM 416E

EPD Data Generated 3/17/2025

	CED	BW	WW	YW	MILK	ME	HPG	CEM	STAY	MARB	REA	FAT
EPD	19	-5.3	67	114	29	3	12	12	15	0.62	0.13	0.08
Rank	1%	5%	42%	29%	18%	42%	46%	1%	46%	16%	48%	99%
Wts.		73	515									
ProS	122		HERDBUILDER	68		GRIDMASTER	54					
RANK	24%		RANK	21%		RANK	41%					

99

BIEBER DURHEIM 445M

BORN: 5/26/2024

REG: 4985741

96% AR 3% SM 1% XX 1B

LSF SRR RANCHER 7190E

LSF SRR MADDUX 0164H

LSF SRR CRYSTAL C5192

BIEBER CL STOCKMAN E116

BIEBER DURHEIM 418H

Cow ID: 445M

BIEBER DURHEIM 158C

EPD Data Generated 3/17/2025

	CED	BW	WW	YW	MILK	ME	HPG	CEM	STAY	MARB	REA	FAT
EPD	9	-2.7	71	112	25	16	13	8	17	0.73	-0.21	0.05
Rank	91%	33%	29%	32%	57%	97%	33%	37%	24%	8%	96%	94%
Wts.		76	492									
ProS	114		HERDBUILDER	56		GRIDMASTER	58					
RANK	34%		RANK	45%		RANK	32%					

OPEN HEIFERS

100 BIEBER PRIDE 428M

BORN: 5/19/2024 REG: 4985685 100% AR 1A

WEDEL RANCHMASTER 9052G


BROWN PRIORITY J428

BROWN MS SURE FIRE E1589

KJL/CLZB COMPLETE 7000E

BIEBER PRIDE 496J

Cow ID: 428M BIEBER PRIDE 153D EPD Data Generated 3/17/2025

	CED	BW	WW	YW	MILK	ME	HPG	CEM	STAY	MARB	REA	FAT
EPD	18	-5.5	66	102	32	5	15	8	16	0.71	-0.05	0.04
Rank	4%	4%	47%	56%	6%	56%	8%	23%	33%	9%	83%	84%
Wts.		69	548									
PROS	109	HERDBUILDER		67	GRID/MASTER		42					
RANK	42%	RANK		22%	RANK		70%					

101 BIEBER CENTERIA 472M

BORN: 6/5/2024 REG: 4985839 100% AR 1A

WEDEL RANCHMASTER 9052G


BROWN PRIORITY J428

BROWN MS SURE FIRE E1589

BIEBER HARD DRIVEY120

BIEBER CENTURIA 348H

Cow ID: 472M BIEBER CENTURIA 196C EPD Data Generated 3/17/2025

	CED	BW	WW	YW	MILK	ME	HPG	CEM	STAY	MARB	REA	FAT
EPD	20	-6.0	60	90	28	1	14	11	12	0.68	0.37	0.03
Rank	1%	2%	70%	80%	29%	33%	15%	3%	80%	11%	12%	80%
Wts.		69	519									
PROS	111	HERDBUILDER		52	GRID/MASTER		60					
RANK	38%	RANK		53%	RANK		29%					

102 BIEBER PRIMROSE 476M

BORN: 6/12/2024 REG: 4985863 93.8% AR 5.9% SM 0.4% XX 1B

LSF SRR RANCHER 7190E


LSF SRR MADDUX 0164H

LSF SRR CRYSTAL C5192

BIEBER TIBERIUS E254

BIEBER PRIMROSE 103H

Cow ID: 476M BIEBER PRIMROSE 311F EPD Data Generated 3/17/2025

	CED	BW	WW	YW	MILK	ME	HPG	CEM	STAY	MARB	REA	FAT
EPD	11	-1.9	71	110	27	11	13	8	15	0.46	-0.20	0.02
Rank	77%	48%	30%	38%	40%	86%	26%	24%	45%	41%	96%	48%
Wts.		77	486									
PROS	101	HERDBUILDER		57	GRID/MASTER		45					
RANK	54%	RANK		43%	RANK		63%					



OPEN HEIFERS

103

BIEBER DATELINE 364M

BORN: 4/24/2024

REG: 4985433

100% AR 1A

LSF NIGHT CALVER 9921W

LSF SRR IDENTITY 0295H

LSF SRR CRYSTAL C5016 F8314

KJL/CLZB COMPLETE 7000E

BIEBER DATELINE 253K

Cow ID: 364M

BIEBER DATELINE 364G

EPD Data Generated 3/17/2025

	CED	BW	WW	YW	MILK	ME	HPG	CEM	STAY	MARB	REA	FAT
EPD	21	-6.2	80	125	30	7	16	12	14	1.03	0.02	0.05
Rank	1%	2%	8%	13%	14%	71%	5%	1%	67%	1%	71%	97%
Wts.		51	548									
PROS	142		HERDBUILDER	65		GRIDMASTER	76					
RANK	7%		RANK	25%		RANK	9%					



104

BIEBER TORYANNA 447M

BORN: 5/26/2024

REG: 4985745

100% AR 1A

9 MILE FRANCHISE 6305

PIE FRANCHISE 9031

PIE FAYETTE 7106

LOOSLI RIGHT ON 423

BIEBER TORYANNA 579E

Cow ID: 447M

BIEBER TORYANNA 211Y

EPD Data Generated 3/17/2025

	CED	BW	WW	YW	MILK	ME	HPG	CEM	STAY	MARB	REA	FAT
EPD	8	-0.7	62	94	31	3	13	5	13	0.28	0.12	0.04
Rank	96%	72%	65%	72%	8%	45%	26%	86%	70%	84%	50%	84%
Wts.		81	459									
PROS	76		HERDBUILDER	43		GRIDMASTER	34					
RANK	86%		RANK	70%		RANK	84%					



105

BIEBER ROSE 449M

BORN: 5/28/2024

REG: 4985761

100% AR 1A

RED LWNBRG FALLOUT 100G

COOKSLEY FALLOUT 2607

TARA 4472 SCN

BIEBER SPARTAN E639

BIEBER ROSE 289K

Cow ID: 449M

BIEBER ROSE 537E

EPD Data Generated 3/17/2025

	CED	BW	WW	YW	MILK	ME	HPG	CEM	STAY	MARB	REA	FAT
EPD	11	-2.3	67	108	30	9	13	7	19	0.52	0.20	0.04
Rank	80%	40%	45%	42%	15%	79%	21%	54%	6%	29%	34%	82%
Wts.		72	529									
PROS	127		HERDBUILDER	78		GRIDMASTER	49					
RANK	18%		RANK	10%		RANK	51%					



OPEN HEIFERS

106BIEBER MIMI 433M

BORN: 5/22/2024REG: 4985703100% AR 1A

RED LWNBRG FALLOUT 100G
COOKSLEY FALLOUT 2607
TARA 4472 SCN

BIEBER CL ENERGIZE F121

BIEBER MIMI 222K

Cow ID: 433M BIEBER MIMI 428G EPD Data Generated 3/17/2025

	CED	BW	WW	YW	MILK	ME	HPG	CEM	STAY	MARB	REA	FAT
EPD	17	-4.4	57	92	30	11	15	10	19	0.50	0.21	0.06
Rank	7%	10%	80%	76%	12%	88%	7%	10%	7%	33%	33%	98%
Wts.		68	509									
ProS	141		HERDBUILDER	80		GRIDMASTER	61					
RANK	8%		RANK	8%		RANK	27%					



107BIEBER PRIMROSE 332M

BORN: 3/9/2024REG: 4952670100% AR 1A

BB PROPULSION 9096
MCCANN PROPULSION 2177
CRUMP NANCY 5172
KJL/CLZB COMPLETE 7000E

BIEBER TILLY 370J

Cow ID: 332M BIEBER TILLY 274E EPD Data Generated 3/17/2025

	CED	BW	WW	YW	MILK	ME	HPG	CEM	STAY	MARB	REA	FAT
EPD	10	-0.7	58	92	27	-1	15	5	15	0.75	0.08	0.03
Rank	82%	72%	77%	76%	35%	25%	8%	87%	40%	7%	59%	76%
Wts.		68	444									
ProS	133		HERDBUILDER	62		GRIDMASTER	71					
RANK	13%		RANK	33%		RANK	14%					



108BIEBER PRIMROSE 460M

BORN: 5/31/2024REG: 4985789100% AR 1A

BECKTON ACCENT D615 D3
PIE ACCENT 1612
PIE RASPBERRY TUO 999

WFL PROFITMAKER E7030

BIEBER PRIMROSE 155J

Cow ID: 460M BIEBER PRIMROSE 121F EPD Data Generated 3/17/2025

	CED	BW	WW	YW	MILK	ME	HPG	CEM	STAY	MARB	REA	FAT
EPD	14	-3.7	68	110	30	-2	13	8	18	0.55	-0.08	0.02
Rank	37%	18%	39%	38%	16%	24%	29%	34%	11%	25%	87%	60%
Wts.		72	487									
ProS	151		HERDBUILDER	86		GRIDMASTER	65					
RANK	4%		RANK	5%		RANK	20%					



109BIEBER TILLY 469M

BORN: 6/3/2024REG: 4985825100% AR 1A

WEDEL RANCHMASTER 9052G
BROWN PRIORITY J428
BROWN MS SURE FIRE E1589
BIEBER CL STOCKMAN E116

BIEBER TILLY 574H

Cow ID: 469M BIEBER TILLY 149D EPD Data Generated 3/17/2025

	CED	BW	WW	YW	MILK	ME	HPG	CEM	STAY	MARB	REA	FAT
EPD	21	-6.7	49	76	31	7	12	12	17	0.72	-0.01	0.08
Rank	1%	1%	95%	94%	10%	70%	46%	1%	21%	9%	77%	99%
Wts.		65	461									
ProS	109		HERDBUILDER	68		GRIDMASTER	41					
RANK	42%		RANK	22%		RANK	72%					



OPEN HEIFERS

110BIEBER SHEBA 435M

BORN: 5/24/2024REG: 4985711100% AR 1A

BECKTON ACCENT D615 D3

PIE ACCENT 1612

PIE RASPBERRY TUO 999

TJS GATE KEEPER F106

BIEBER SHEBA 307J

Cow ID: 435M BIEBER SHEBA 538F EPD Data Generated 3/17/2025

	CED	BW	WW	YW	MILK	ME	HPG	CEM	STAY	MARB	REA	FAT
EPD	15	-5.1	56	94	28	1	12	8	14	0.50	-0.32	0.03
Rank	22%	6%	83%	73%	27%	33%	34%	24%	54%	33%	99%	77%
Wts.		71	486									
ProS	110		HERDBUILDER	56		GRIDMASTER	53					
RANK	41%		RANK	44%		RANK	42%					



111BIEBER SAM 430M

BORN: 5/22/2024REG: 4985691100% AR 1A

WEDEL RANCHMASTER 9052G

BROWN PRIORITY J428

BROWN MS SURE FIRE E1589

BIEBER CL STOCKMARKET E119

BIEBER SAM 339J

Cow ID: 430M BIEBER SAM 546G EPD Data Generated 3/17/2025

	CED	BW	WW	YW	MILK	ME	HPG	CEM	STAY	MARB	REA	FAT
EPD	17	-2.1	72	120	32	4	14	10	11	0.80	0.39	0.03
Rank	9%	43%	25%	20%	6%	49%	13%	5%	87%	5%	8%	77%
Wts.		70	528									
ProS	123		HERDBUILDER	49		GRIDMASTER	74					
RANK	23%		RANK	59%		RANK	11%					



112BIEBER PRIMROSE 477M

BORN: 6/18/2024REG: 4985871100% AR 1A

LSF SRR RANCHER 7190E

LSF SRR MADDUX 0164H

LSF SRR CRYSTAL C5192

BIEBER LET'S ROLL B563

BIEBER PRIMROSE 311H

Cow ID: 477M BIEBER PRIMROSE 151D EPD Data Generated 3/17/2025

	CED	BW	WW	YW	MILK	ME	HPG	CEM	STAY	MARB	REA	FAT
EPD	12	-1.4	75	122	24	7	14	8	17	0.64	0.17	0.00
Rank	63%	57%	18%	17%	71%	66%	18%	30%	17%	15%	40%	15%
Wts.		72	457									
ProS	151		HERDBUILDER	76		GRIDMASTER	75					
RANK	4%		RANK	11%		RANK	10%					



113BIEBER ROSE 467M

BORN: 6/2/2024REG: 4985913100% AR 1A

KJL/CLZB COMPLETE 7000E

ALC MR COMPLETE H41

PELTON MISS KENDRA X121

PIE STOCKMAN 4051

BIEBER ROSE 454F

Cow ID: 467M BIEBER ROSE 252C EPD Data Generated 3/17/2025

	CED	BW	WW	YW	MILK	ME	HPG	CEM	STAY	MARB	REA	FAT
EPD	13	-3.0	65	105	25	3	11	6	19	0.76	-0.31	0.03
Rank	53%	28%	54%	47%	59%	46%	62%	74%	6%	7%	99%	73%
Wts.		70	431									
ProS	129		HERDBUILDER	73		GRIDMASTER	56					
RANK	17%		RANK	14%		RANK	36%					



OPEN HEIFERS

114 BIEBER PRIMROSE 455M

BORN: 5/30/2024 REG: 4985779 100% AR 1A

RED LWNBRG FALLOUT 100G

COOKSLEY FALLOUT 2607

TARA 4472 SCN

KJL/CLZB COMPLETE 7000E

BIEBER PRIMROSE 170K

Cow ID: 455M BIEBER PRIMROSE 553H EPD Data Generated 3/17/2025

	CED	BW	WW	YW	MILK	ME	HPG	CEM	STAY	MARB	REA	FAT
EPD	17	-5.0	53	92	30	8	13	9	22	0.85	0.09	0.04
Rank	8%	6%	90%	75%	16%	76%	24%	12%	1%	3%	57%	89%
Wts.		65	528									
PROS	158		HERDBUILDER	92		GRIDMASTER	67					
RANK	2%		RANK	3%		RANK	19%					



115 BIEBER FLOWER 444M

BORN: 5/26/2024 REG: 4985739 100% AR 1A

KJL/CLZB COMPLETE 7000E

ALC MR COMPLETE H41

PELTON MISS KENDRA X121

9 MILE FRANCHISE 6305

BIEBER FLOWER 292F

Cow ID: 444M BIEBER FLOWER 394Z EPD Data Generated 3/17/2025

	CED	BW	WW	YW	MILK	ME	HPG	CEM	STAY	MARB	REA	FAT
EPD	11	-2.1	58	92	30	3	12	5	22	0.70	0.24	0.04
Rank	74%	43%	78%	76%	16%	43%	34%	84%	1%	10%	28%	91%
Wts.		76	528									
PROS	153		HERDBUILDER	87		GRIDMASTER	66					
RANK	3%		RANK	4%		RANK	20%					



116 BIEBER TOP LINE 420M

BORN: 5/16/2024 REG: 4985669 100% AR 1A

RED LWNBRG FALLOUT 100G

COOKSLEY FALLOUT 2607

TARA 4472 SCN

KJL/CLZB KIRKLAND 8003F

BIEBER TOP LINE 346K

Cow ID: 420M BIEBER TOP LINE 230D EPD Data Generated 3/17/2025

	CED	BW	WW	YW	MILK	ME	HPG	CEM	STAY	MARB	REA	FAT
EPD	9	-0.1	72	116	28	13	14	5	11	0.50	0.37	0.00
Rank	90%	81%	25%	25%	29%	92%	14%	85%	89%	33%	12%	21%
Wts.		76	555									
PROS	85		HERDBUILDER	21		GRIDMASTER	64					
RANK	77%		RANK	96%		RANK	22%					



117 BIEBER SURPRISE 464M

BORN: 5/31/2024 REG: 4985797 100% AR 1A

BECKTON ACCENT D615 D3

PIE ACCENT 1612

PIE RASPBERRY TUO 999

BIEBER CL STOCKMARKET E119

BIEBER SUPRISE 220H

Cow ID: 464M BIEBER SUPRISE 317E EPD Data Generated 3/17/2025

	CED	BW	WW	YW	MILK	ME	HPG	CEM	STAY	MARB	REA	FAT
EPD	14	-3.3	69	110	27	2	14	8	15	0.73	0.15	0.07
Rank	37%	23%	37%	36%	37%	40%	17%	26%	41%	8%	45%	99%
Wts.		75	478									
PROS	131		HERDBUILDER	68		GRIDMASTER	63					
RANK	15%		RANK	21%		RANK	24%					



118 BIEBER DURHEIM 440M

BORN: 5/26/2024 REG: 4985729 96.9% AR 3.1% XX 1B

HXC 5545C

KJL/CLZB KIRKLAND 8003F

HXC 107Y

BIEBER FOREFRONT B281

BIEBER DURHEIM 323E

Cow ID: 440M BIEBER DURHEIM 370A EPD Data Generated 3/17/2025

	CED	BW	WW	YW	MILK	ME	HPG	CEM	STAY	MARB	REA	FAT
EPD	15	-5.9	54	93	26	3	13	5	15	0.52	0.12	0.01
Rank	20%	3%	87%	75%	42%	47%	27%	83%	45%	29%	50%	31%
Wts.		65	430									
PROS	96		HERDBUILDER	44		GRIDMASTER	52					
RANK	61%		RANK	67%		RANK	45%					



Thank You

THANK YOU FOR YOUR SUPPORT OF OUR PROGRAM!

VISIT WWW.BIEBERREDANGUS.COM FOR MORE

SALE INFORMATION INCLUDING UPDATED EPDs,

LOT VIDEOS, AND A DIGITAL COPY OF THE CATALOG.

COMMERCIAL BRED COWS

These lots will be sold in groups of 3.

This year we are offering a small portion of commercial bred cows from the Yackley Red Angus herd out of Onida, SD. These lots will open at 7:00 am CDT on Thursday, April 17 and close at 7:00 pm CDT on Thursday, April 17. Please see the bidding procedures and auction format sections on the first page of the catalog for more information on how the sale will run.

These cows have been grouped based on due date, and will be sold as a set of three. They were exposed to ANDRAS DISTINCTION K052 and LSF SRR DIVERSIFIED 1143J.

Lot	Group	Recip ID	Due Date	Sex of Preg
119	Commercial group 1	749	9/3/2025	HHTW
120	Commercial group 1	753	9/5/2025	
121	Commercial group 1	770	9/5/2025	B
122	Commercial group 2	910	9/5/2025	B
123	Commercial group 2	975	9/5/2025	TW
124	Commercial group 2	774	9/9/2025	B?TW
125	Commercial group 3	159	9/10/2025	B
126	Commercial group 3	982	9/10/2025	B
127	Commercial group 3	143	9/12/2025	B
128	Commercial group 4	055	9/14/2025	B
129	Commercial group 4	133	9/14/2025	B
130	Commercial group 4	127	9/16/2025	B
131	Commercial group 5	703	9/17/2025	H
132	Commercial group 5	959	9/19/2025	B
133	Commercial group 5	108	9/21/2025	BHTW
134	Commercial group 6	694	9/26/2025	H
135	Commercial group 6	815	9/26/2025	TW
136	Commercial group 6	873	9/30/2025	H
137	Commercial group 7	874	10/1/2025	B
138	Commercial group 7	713	10/3/2025	
139	Commercial group 7	981	10/3/2025	



REFERENCE SIRES

Below is a list of sires and registration numbers that were used when breeding the fall calving cows. Please visit www.redangus.org to reference their EPD and pedigree information.

For the registered fall bred cows, please reference the footnote on each individual lot for who the probable calf sire is.

The commercial fall bred cows were exposed to ANDRAS DISTINCTION K052 and LSF SRR DIVERSIFIED 1143J only.

BIEBER BLUE CHIP H302 reg 4303789

BIEBER JUMPSTART J137 reg 4463653

BIEBER CHECKMATE K126 reg 4620529

ANDRAS DISTINCTION K052 reg 4648179

LSF SRR DIVERSIFIED 1143J reg 4455841

BIEBER HIGH DENSITY L316 reg 4789880



HOW TO BID

This is an online only auction facilitated through DVAuction.com. Please see the instructions below for information on how the auction will run and how to bid. **Video of all lots will be available on DVAuction.com prior to sale day.**

HOW THEY WORK

All lots will close at the same time. Bidding will be extended for 5 minutes on all lots if a bid is placed on any lot within 5 minutes before closing time. Bidding will officially close when there are no bids placed on any lot for a period of 5 minutes.

BIDDING PROCEDURES

1) Make sure you have an active DVAuction account. Log in to www.DVAuction.com any day of the week and make sure your login still works. You will not be allowed to watch or bid if you do not have a DVAuction login.

2) Once you are logged into the home page for DVAuction, you will see your name listed in the upper left corner of the page. This is the same area that you put in your username and password. Below your name you will see the Apply for Bidding link. Click on this link and it will take you to a page that shows all the upcoming sales. If the sale you are interested in bidding on is listed with APPROVED in front of it, you are ready to bid. If not, click in the box next to the sale that you wish to bid at, scroll down to the bottom of the page, and click on the Apply for Bidding bar. You will now see a green bar at the top saying 'Your request for approval(s) have been received.'

Make sure to continue to check back on the status of the sale you wish to bid at. If it says APPROVED in front of the sale, you are ready to bid. If it does not, call DVAuction at (402) 316-5460 for approval.

3) To bid, login to your DVAuction account. On the home page, scroll through today's events and find the sale you wish to bid on. Click on the view button next to the sale listing and it will take you to the lot list. To bid, click on a lot and enter a bid amount.

****If you click on a lot and see a bar that says 'You are not approved to bid at this event,' click on the Apply for Bidding button. Once approved, this is the area that you will submit your bid.**

For general questions or requests to bid, please contact DVAuction at (402) 316-5460 or support@dvauction.com.



LEGAL TERMS AND CONDITIONS

The Red Angus Association Terms and Conditions will apply if the terms and conditions printed here are not applicable.

BIDDING DISPUTES: The auctioneer in charge will settle any disputes as to bids. His decision on such matters shall be final.

TERMS: The terms of the sale are cash; the right of property shall not pass until after settlement is made. All settlements will be made with the clerks of the sale immediately following the conclusion of the sale and before any cattle will be released from the ranch.

RETAINED INTEREST: We are retaining 1/2 interest in all bulls in the sale. We are selling the remaining 1/2 interest, full possession, and full salvage value on these bulls. This option gives Bieber Red Angus Ranch the option to collect, use and market semen from the bull, and does not restrict the purchaser from doing the same. This collection, unless agreed otherwise, would be done at the expense of Bieber Red Angus Ranch, at the buyer's convenience. Also at the time of purchase, the highest bidder on a retained interest bull may elect to purchase exclusive semen rights for 100% of the purchase price in addition to the purchased price on retained bulls. If a buyer elects to purchase exclusive semen rights, Bieber Red Angus Ranch's interest then becomes in herd use only. Bieber Red Angus Ranch retains all rights to use the bull within their herd.

SEMEN RIGHTS: Buyers receive semen rights proportional to the interest purchased. If you purchase a 1/2 interest, then you are entitled to 1/2 of the semen collections at cost, provided that you indicate you want semen prior to collection. We intend to collect some of the bulls in the sale and sample them in our herd. We will cooperate with the buyer in collection of the bull. We prefer to collect most bulls after the first season of use, and we will contact the buyer when we intend to collect the bull at a time convenient for the buyer.

PURCHASER'S RISK: Each animal becomes the risk of the purchaser as soon as sold. Animals will be fed, watered and cared for at the purchaser's risk for a reasonable time.

CERTIFICATE OF REGISTRY: A certificate of registry and transfer will be furnished for each animal sold as a registered animal, after settlement has been made.

HEALTH: All cattle will have official health certificates and will sell guaranteed export to Canada. Canadian health certificates will be charged at cost on animals selling under \$4000.

ANNOUNCEMENTS: Changes of information contained in this catalog relating to the animals offered for the sale will be announced from the auction block and such announcements shall take precedence. Errors discovered in the catalog will be corrected by announcements at sale time, and such corrections will take precedence over the printed matter in this catalog.

BREEDER'S GUARANTEE: 1. All animals are guaranteed breeders, with the exception of: a) calves under twelve months of age; b) animals shown by Purchaser after sale (in cases of animals shown after purchase, the breeding guarantee, if any, shall be such as agreed upon between Seller and Buyer) c) any open heifer that has been flushed for embryo transfer; or d) gross negligence or willful misconduct on the part of the Purchaser. 2. Bulls are guaranteed breeders if not allowed to run with the herd until at least 14 months of age. Any bull which either: a) settles 1/3 or more of the healthy cows he serves; b) is the sire of 20 or more animals; or c) settles cows by natural service and passes a fertility test made by a competent veterinarian during any 6 month period of trial (provided for in paragraph 2 of the section of these sale terms and conditions entitled "Options and Privileges of Return or Adjustment") shall be considered a breeder.

Any guarantee with respect to the ability to freeze semen shall be by separate agreement between Buyer and Seller.

All guarantees are limited to the amount of the purchase price.

Open females have not been served and are so guaranteed.

IDENTIFICATION: Each animal carries an EID tag for identification. That EID corresponds with the ID of the animal and is recorded with the Red Angus Association. Tag numbers on the cattle correspond with lot numbers in this catalog. Purchaser agrees to use full name of animal in advertising and on stall cards at shows.

OPTIONS AND PRIVILEGES OF RETURN OR ADJUSTMENT:

1. All claims for adjustment or refund must be made in writing either within six months of the sale date or no later than six months after the animal reaches 18 months of age, with the exception of claims involving defects or parentage.

2. In the event an animal is claimed to be a non-breeder, the animal may be returned to the farm of the Seller if in good condition and complying with the health requirements of the Seller's state. The Seller shall be entitled to six months' trial following the return of the animal in which to prove the animal is a breeder. The Seller shall, at the option of the Buyer, replace the animal with another of equal value or grant the Buyer a credit for use on any products marketed by the Seller. Such credit of the full purchase price shall in any case be deemed full satisfaction and settlement. Any expense incurred for transporting an animal claimed to be a non-breeder shall be the responsibility of the Purchaser, except that the Seller shall be responsible for the transportation costs in excess of the distance between the Purchaser's farm and the location where the sale took place. If the Seller proves the animal is a breeder, it shall be the obligation of the Purchaser to take delivery of the animal and pay all expense incurred for transportation.

3. If a female sold as "safe in calf" proves not to be in calf, the Purchaser may receive service from the bull previously used, if available, or if the bull is not available, the Seller shall be obligated to make a satisfactory adjustment on the purchase price upon return of the animal to the farm of the Seller. Any adjustment provided for herein shall absolve the Seller from further liability, except in case such female proves to be a non-breeder. If a female represented as "safe in calf" at time of sale to a certain bull proves to have been bred to a different bull, the Seller shall be obligated to take a satisfactory adjustment on the purchase price upon return of the animal to the farm of the Seller (adjustments shall not be considered to a breeding fee or an allocation of the purchase price to any unborn calf). Any expenses incurred for transportation shall be the responsibility of the Purchaser, except that the Seller shall be responsible for the transportation costs in excess to the distance between the Purchaser's farm and the location where the sale took place.

4. If a female sold as "served" proves not to be in calf, or if a female sold as "pasture-bred" proves not to be in calf, the Seller only guarantees such female to the breeder.

5. If a female sold as "open" proves to be with calf, the Purchaser may return the animal to the farm of the Seller prior to calving for a credit of the full purchase price or for another animal of equal value, whichever is acceptable to the Purchaser. It shall be the obligation of the Seller to bear any expense incurred for transportation.

LIABILITY: Neither owners, sale managers, clerks nor anyone connected with the sale assumes responsibility, legal or otherwise, for damages of any kind.

CONTRACT: The above terms and conditions shall constitute a contract between the buyer and seller of each animal sold.

IMPLIED WARRANTY: Except for those stated in the terms and conditions, there are no warranties, either expressed or implied, as to merchantability or fitness for a particular purpose with respect to the cattle being sold in this auction. The warranties set forth in terms and conditions are in lieu of all other warranties, either expressed or implied, and the remedies proved therein shall be the sole and exclusive remedy of the buyer, or any part claiming through buyer, for any breach of warranty or guarantee therein provided and all other obligations or liabilities.



WE LOOK FORWARD TO SEEING YOU THIS FALL FOR OUR...

Bieber Fever

FALL FEMALE & BULL SALE

THURSDAY, NOVEMBER 13, 2025

ONLINE OR IN PERSON AT THE RANCH NEAR LEOLA, SD



BIEBER RED ANGUS RANCH

Craig and Peggy Bieber
11450 353rd Ave. Leola, SD 57456



BIEBER JUMPSTART J137



BIEBER CL ENERGIZE F121

Mark your calendars for our Fall Female and Bull Sale

November 13, 2025

Featuring bred heifers, bred cows, and age-advantaged bulls.

WWW.BIEBERREDANGUS.COM